



FOR SALE OR LEASE

INDUSTRIAL BUILDING

Property Highlights

- Asking Price: \$8,425,000 (\$35.00/SF)
- Lease Rate: \$2.75/SF
- 240,474 ± SF
- Acreage: 26.18 ± AC
- 14'-16.5' Clear Heights
- 12 Dock Doors
- Roof improvements as recent as 2025
- Property features an interior crane
- Ample parking & loading space

For more information, please contact:

Ethan Fowler

501 590 6544

efowler@sagepartners.com

Colby Hoagland

303 218 8260

choagland@sagepartners.com

Marshall Saviers

479 422 1620

mtsaviers@sagepartners.com

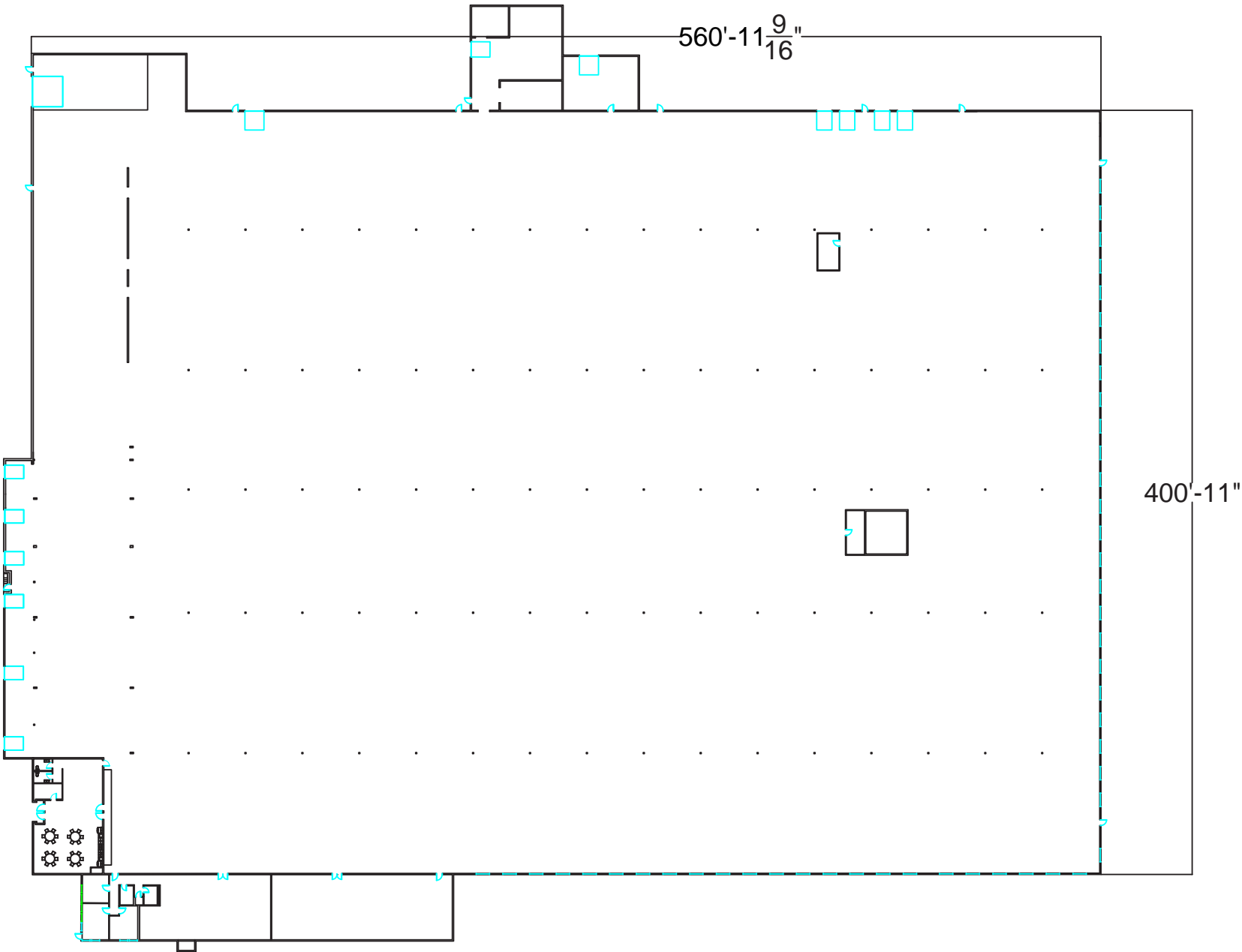
479 845 3000

sagepartners.com

*information deemed reliable but not guaranteed

SITE PLAN 650 W HWY 412 | SILOAM SPRINGS, AR 72761





EXTERIOR PHOTOS 650 W HWY 412 | SILOAM SPRINGS, AR 72761



CUSHMAN &
WAKEFIELD

sage
PARTNERS

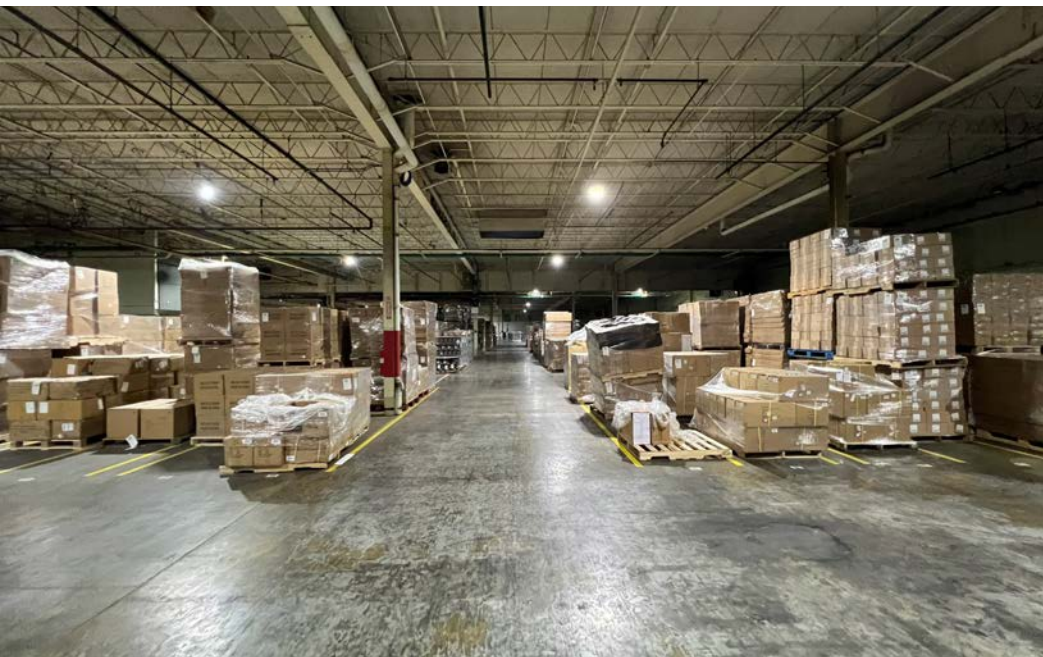
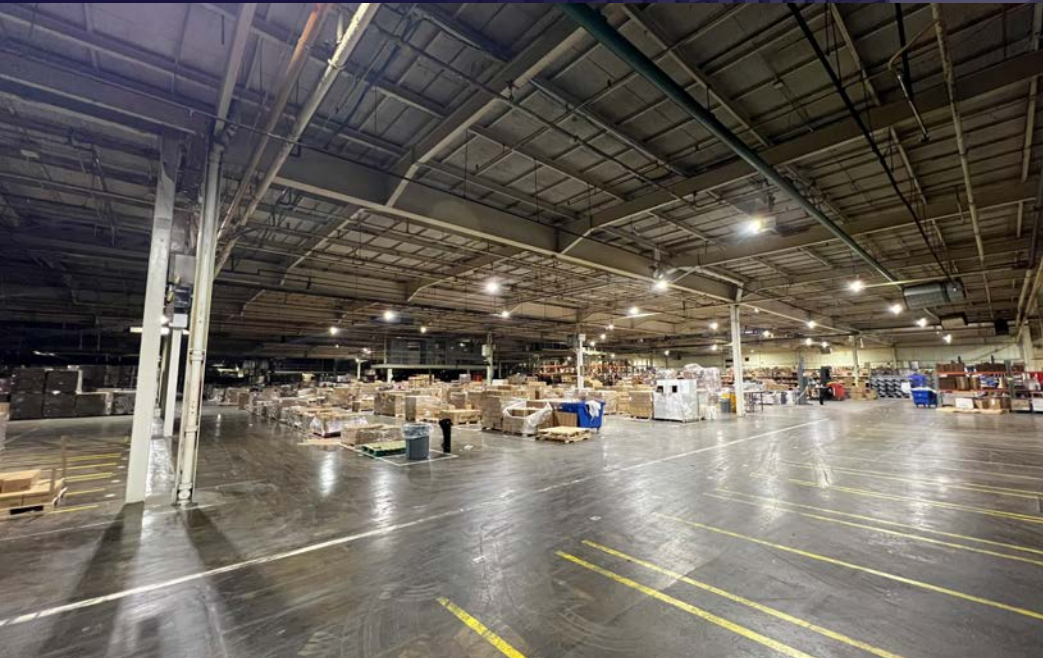


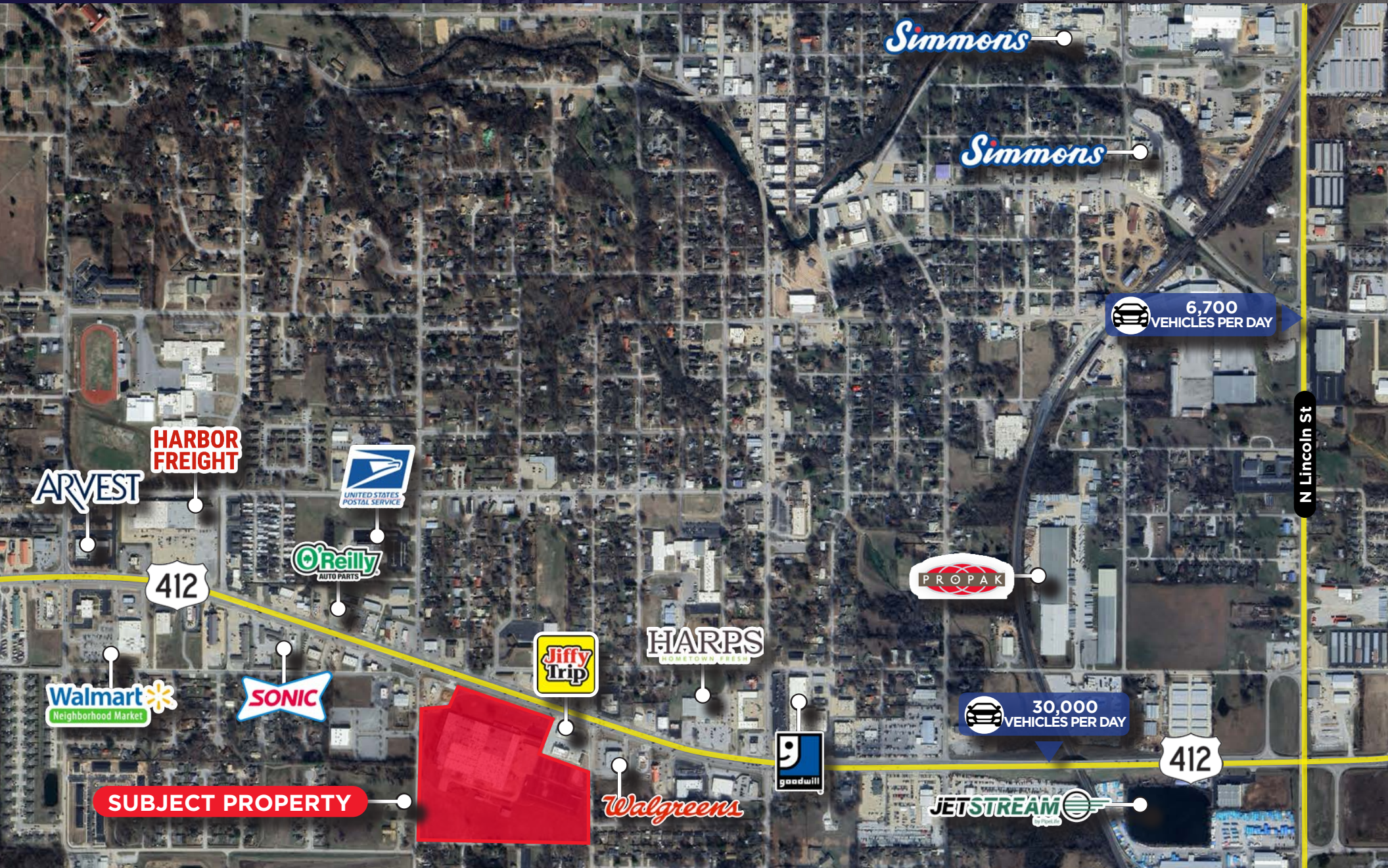
INTERIOR PHOTOS 650 W HWY 412 | SILOAM SPRINGS, AR 72761



CUSHMAN &
WAKEFIELD

sage
PARTNERS





FOR SALE OR LEASE

INDUSTRIAL BUILDING

650 W HWY 412 | SILOAM SPRINGS, AR

FOR MORE INFORMATION, PLEASE CONTACT:

ETHAN FOWLER

+1 501 590 6544

efowler@sagepartners.com

COLBY HOAGLAND

+1 303 218 8260

choagland@sagepartners.com

MARSHALL SAVIERS

+1 479 422 1620

mtsaviors@sagepartners.com

©2024 Cushman & Wakefield. All rights reserved. The material in this presentation has been prepared solely for information purposes, and is strictly confidential. Any disclosure, use, copying or circulation of this presentation (or the information contained within it) is strictly prohibited, unless you have obtained Cushman & Wakefield's prior written consent. The views expressed in this presentation are the views of the author and do not necessarily reflect the views of Cushman & Wakefield. Neither this presentation nor any part of it shall form the basis of, or be relied upon in connection with any offer, or act as an inducement to enter into any contract or commitment whatsoever. NO REPRESENTATION OR WARRANTY IS GIVEN, EXPRESS OR IMPLIED, AS TO THE ACCURACY OF THE INFORMATION CONTAINED WITHIN THIS PRESENTATION, AND CUSHMAN & WAKEFIELD IS UNDER NO OBLIGATION TO SUBSEQUENTLY CORRECT IT IN THE EVENT OF ERRORS.