



# Office/R&D and Retail Spaces Available

1451 EL CAMINO REAL, REDWOOD CITY, CA

## FOR LEASE



### INTERIOR



OFFICE/  
R&D SUITE

± 6,713

OFFICE/R&D  
SQUARE FEET



ONSITE  
PARKING

± 1,112

RETAIL A  
SQUARE FEET

± 838

RETAIL B  
SQUARE FEET

## Kidder Mathews

**BRETT WEBER**  
650.771.3000  
brett.weber@kidder.com  
LIC N° 00901454

**STEVE DIVNEY**  
650.400.8065  
steve.divney@kidder.com  
LIC N° 01216239

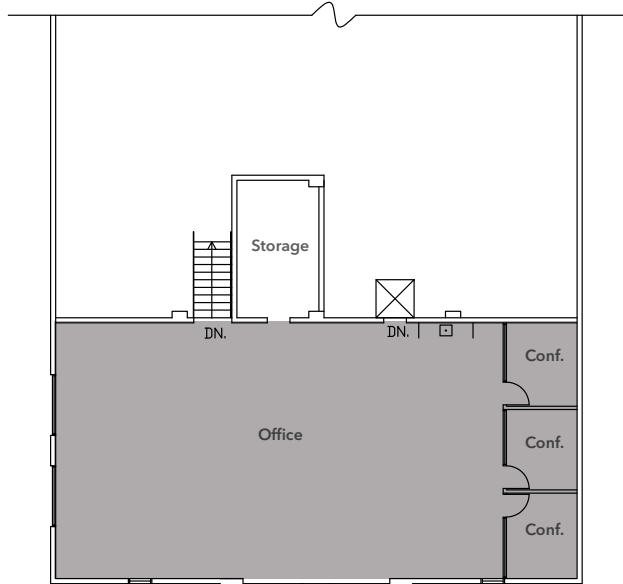
**JOHN MCLELLAN**  
415.418.9880  
john.mclellan@kidder.com  
LIC N° 01869489

This information supplied herein is from sources we deem reliable. It is provided without any representation, warranty, or guarantee, expressed or implied as to its accuracy. Prospective Buyer or Tenant should conduct an independent investigation and verification of all matters deemed to be material, including, but not limited to, statements of income and expenses. Consult your attorney, accountant, or other professional advisor.

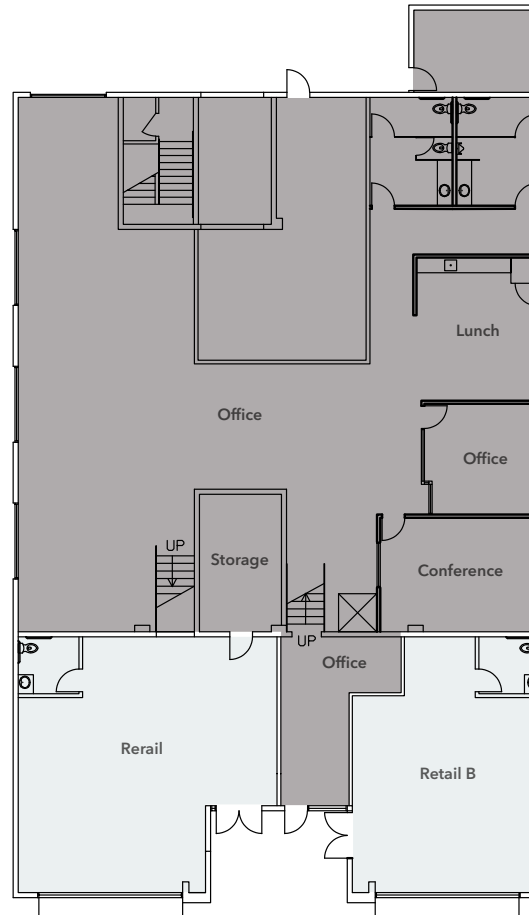
**FOR LEASE**

# Office/R&D and Retail Spaces

1451 EL CAMINO REAL, REDWOOD CITY, CA



UPPER FLOOR



GROUND FLOOR & MID LEVEL

**OFFICE/R&D:** ± 6,713 SF

**RETAIL A:** ± 1,112 SF

**RETAIL B:** ± 838 SF

**BUILD TO** suite office/R&D  
and retail suites

**ONSITE** parking

**DOCK** high door for Office/  
R&D Space

**BRETT WEBER**

650.771.3000

[brett.weber@kidder.com](mailto:brett.weber@kidder.com)

LIC N° 00901454

**STEVE DIVNEY**

650.400.8065

[steve.divney@kidder.com](mailto:steve.divney@kidder.com)

LIC N° 01216239

**JOHN MCLELLAN**

415.418.9880

[john.mclellan@kidder.com](mailto:john.mclellan@kidder.com)

LIC N° 0869489

**KIDDER.COM**

This information supplied herein is from sources we deem reliable. It is provided without any representation, warranty, or guarantee, expressed or implied as to its accuracy. Prospective Buyer or Tenant should conduct an independent investigation and verification of all matters deemed to be material, including, but not limited to, statements of income and expenses. Consult your attorney, accountant, or other professional advisor.

**km** Kidder  
Mathews

FOR LEASE

# Office/R&D and Retail Spaces

1451 EL CAMINO REAL, REDWOOD CITY, CA



## Three Suites Available in Downtown Redwood City

**EXCELLENT** retail exposure on El Camino Real

**WALKING** distance to all downtown amenities and CalTrain

**BRETT WEBER**  
650.771.3000  
[brett.weber@kidder.com](mailto:brett.weber@kidder.com)  
LIC N° 00901454

**STEVE DIVNEY**  
650.400.8065  
[steve.divney@kidder.com](mailto:steve.divney@kidder.com)  
LIC N° 01216239

**JOHN MCLELLAN**  
415.418.9880  
[john.mclellan@kidder.com](mailto:john.mclellan@kidder.com)  
LIC N° 0869489

KIDDER.COM

This information supplied herein is from sources we deem reliable. It is provided without any representation, warranty, or guarantee, expressed or implied as to its accuracy. Prospective Buyer or Tenant should conduct an independent investigation and verification of all matters deemed to be material, including, but not limited to, statements of income and expenses. Consult your attorney, accountant, or other professional advisor.

**km** Kidder Mathews

FOR LEASE

# Office/R&D and Retail Spaces

1451 EL CAMINO REAL, REDWOOD CITY, CA



KIDDER.COM

This information supplied herein is from sources we deem reliable. It is provided without any representation, warranty, or guarantee, expressed or implied as to its accuracy. Prospective Buyer or Tenant should conduct an independent investigation and verification of all matters deemed to be material, including, but not limited to, statements of income and expenses. Consult your attorney, accountant, or other professional advisor.

**km** Kidder Mathews