

AVAILABLE 1,255-8,679 SF | FORMER RESTAURANT 5,638 SF + PATIO

Wild
Fork

COMING SOON!

ENCINITAS RANCH

Town Center



RI RETAIL INSITE

Encinitas
Ranch
Town
Center



- ROSS DRESS FOR LESS
- Walmart Save money. Live better.
- ULTA BEAUTY
- URBAN OUTFITTERS
- free people
- ANTHROPOLOGIE
- Panera BREAD
- J.CREW
- urban plates
- JIMBO'S ...Naturally!
- Apple
- Sur la table THE ART & SOUL OF COOKING
- H&M
- Shell
- McDonald's
- ENZO'S BAR-B-Q
- KREI
- Barbeques GALORE
- THE HOME DEPOT
- Pollo Loco
- DPT GASPAR Doctors of Physical Therapy
- CHASE
- usbank
- DICK'S SPORTING GOODS
- STATER BROS. SPORTS
- BEST BUY
- LENSCRAFTERS
- MISSE CAUDWELL
- BARNES & NOBLE
- PETSMART
- Bath & Body Works
- Famous Footwear
- SCANDINAVIAN DESIGNS
- Target
- Total Wine & MORE
- SALON WORLD SUITES

Encinitas Ranch Town Center.

Encinitas Ranch Town Center contains approximately 529,000 square feet and offers a strong mix of major tenants along with many specialty stores including: Target, Stater Brothers, Dick's Sporting Goods, Scandinavian Designs, Best Buy, Barnes & Noble, Total Wine & More, PetSmart, Ross, Vans, Chase Bank, US Bank, Buffalo Wild Wings, Cava, Urbane Café, and more. The second phase of Encinitas Ranch Town Center, the Plaza at Encinitas Ranch contains approximately 145,000 square feet and offers a strong mix of major tenants including: Walmart, REI, AT&T, Starbucks Coffee, and Subway.

Major surface streets and Interstate 5 offer excellent access to Encinitas Ranch Town Center and the Plaza at Encinitas Ranch. Tenants enjoy outstanding visibility with over 2,000 lineal feet of street frontage along El Camino Real.

Encinitas Ranch serves the affluent communities of Rancho Santa Fe, Del Mar, Lomas Santa Fe, La Costa, Carlsbad, and Encinitas. The Center rests minutes away from additional retail opportunities, the Encinitas Golf Course, and The Four Seasons Hotel & Resort.



Property Highlights.

- Dominant retail shopping center in North County
- Affluent demographics and solid family households
- Established retail volumes throughout the center
- One of the top producing Target stores in the county



ENCINITAS RANCH TOWN CENTER



Site Plan.

AVAILABLE
Pad 3
(Former Z-Gallerie)
8,679 SF

Suite	Tenant	SF
ENCINITAS RANCH TOWN CENTER		
Building A	Target	139,358
Building B	Scandinavian Designs	37,500
Building B	Mor Furniture (Coming Soon)	9,851
Building C	Total Wine & More	30,067
Building D	Salon World Suites	8,504
Building E	Famous Footwear	7,208
Building F	Bath & Body Works	3,000
Building G	Petsmart	27,483
Building H	Ross Stores	28,053
Building I	Barnes & Noble	25,013
Building I	Available (Former Starbucks)	1,255
Building J	Cava	2,684
Building J	Juice Stop	804
Building J	Poki Poki	850
Building J	Sprint	2,021
Building J	Starbucks Coffee	1,200
Building J	Supercuts	1,548
Building J	Urbane Café	2,241
Building K	LensCrafters	6,500
Building K	Men's Wearhouse	4,534
Building L	Best Buy	25,650
Building M	Stater Brothers	50,245
Building N	Dicks Sporting Goods	43,269
Pad 1	Gaspar Physical Therapy	6,600
Pad 10	Jersey Mikes	1,000
Pad 10	KC's Tandoor Indian Cuisine	1,200
Pad 10	Thai Society	1,000
Pad 11	Enzo's BBQ (Coming Soon)	6,100
Pad 2	El Pollo Loco	3,000
Pad 3	Einstein Bros. Bagels	2,011

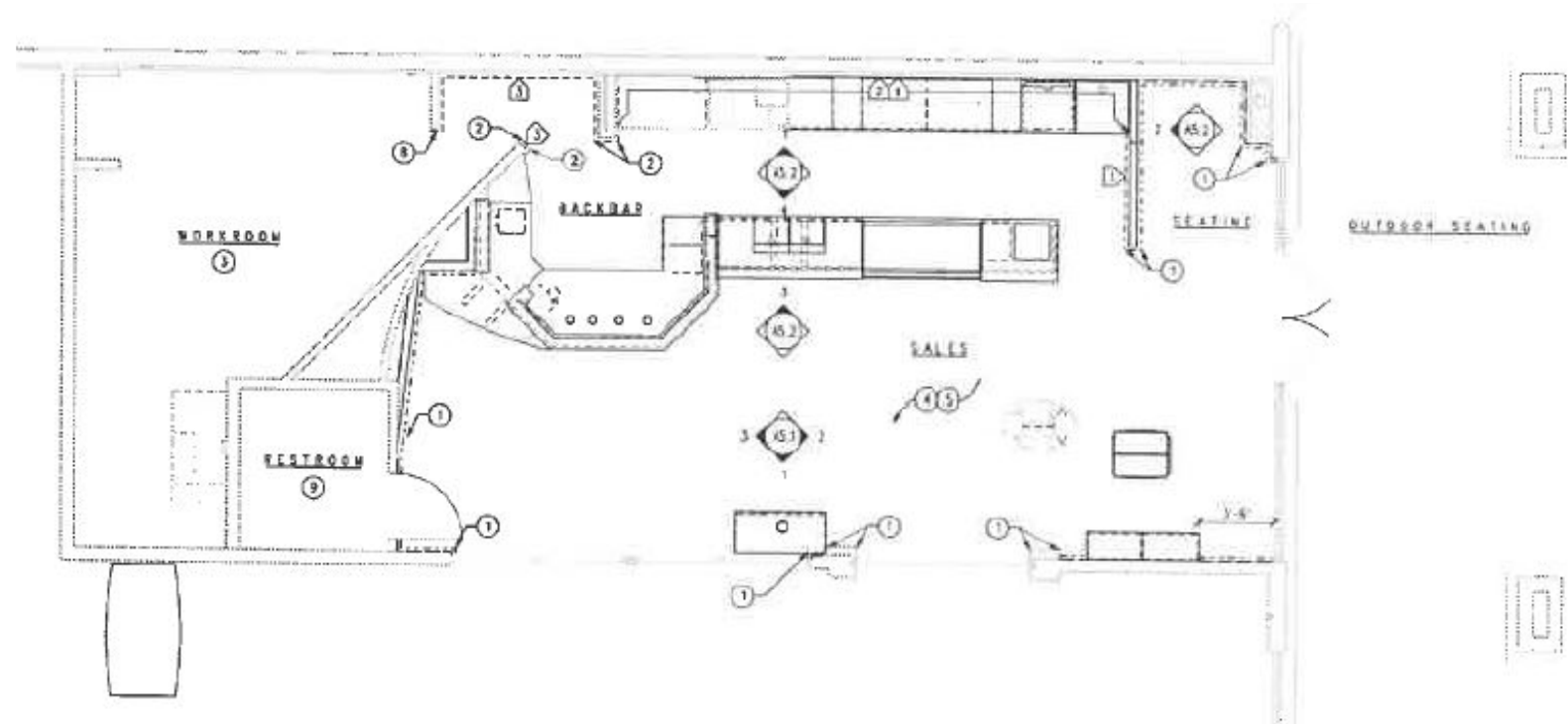
Suite	Tenant	SF
Pad 3	TRE Boutique	1,050
Pad 3	Vans	3,016
Pad 3	Wahoo's Fish Tacos	2,585
Pad 3	Available (Former Z-Gallerie)	8,679
Pad 4	The Joint Chiropractic	1,000
Pad 4	Hallmark	6,000
Pad 4	Panda Express	1,800
Pad 4	Ultra Beauty Supply Salon	2,000
Pad 4	UPS Store	1,200
Pad 6	Chase Bank	5,928
Pad 7A	BBQ Galore	5,200
Pad 7B	US Bank	4,800
Pad 8	Shell Gas Station/Car Wash/Lube N Tune	4,812
Pad 9	McDonald's	2,539

SEPARATE OWNER		
Black Whale Lighting		Pad 5
Ortho Mattress		Pad 5
Scripps Health		Pad 5

Availability.

Building I (Former Starbucks)

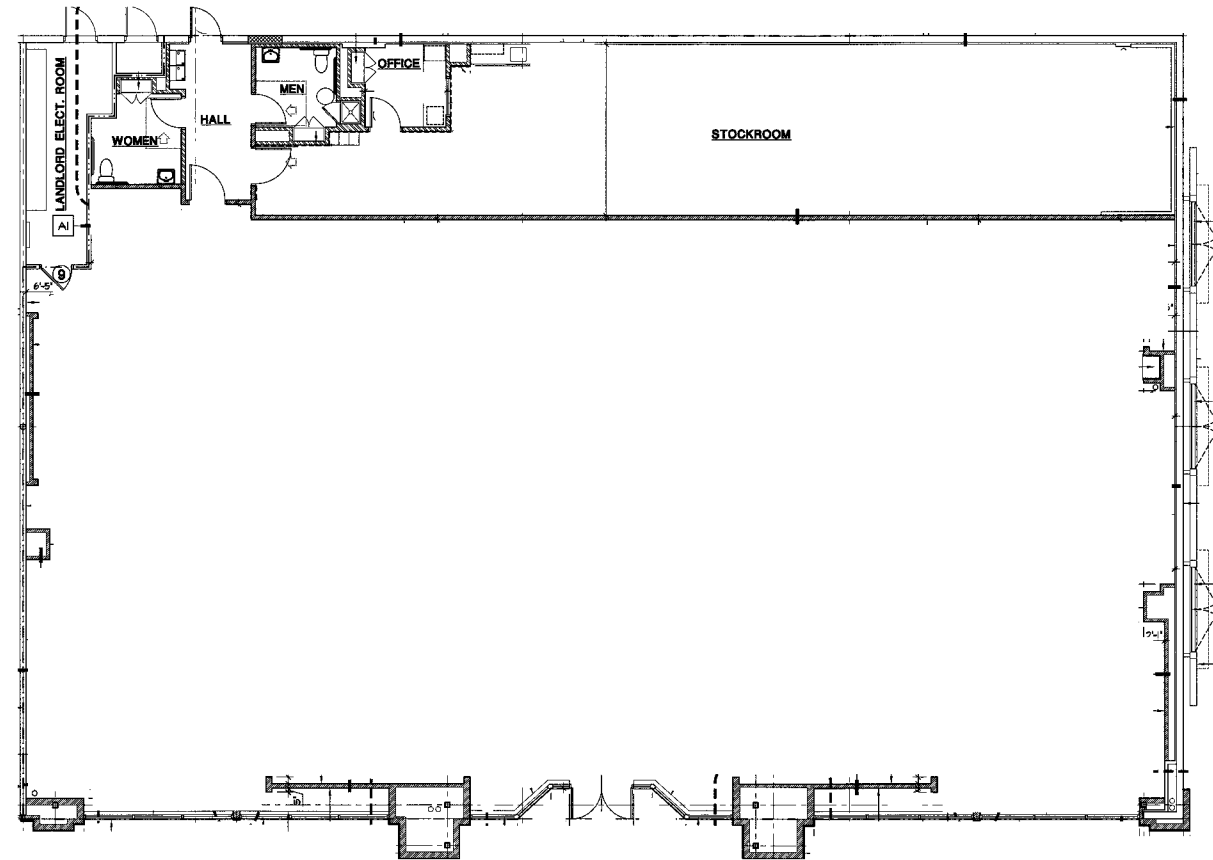
Available · 1,255 sf



Availability.

Pad 3 (Former Z-Gallerie)

Available Soon · 8,679 sf



PLAZA AT ENCINITAS RANCH



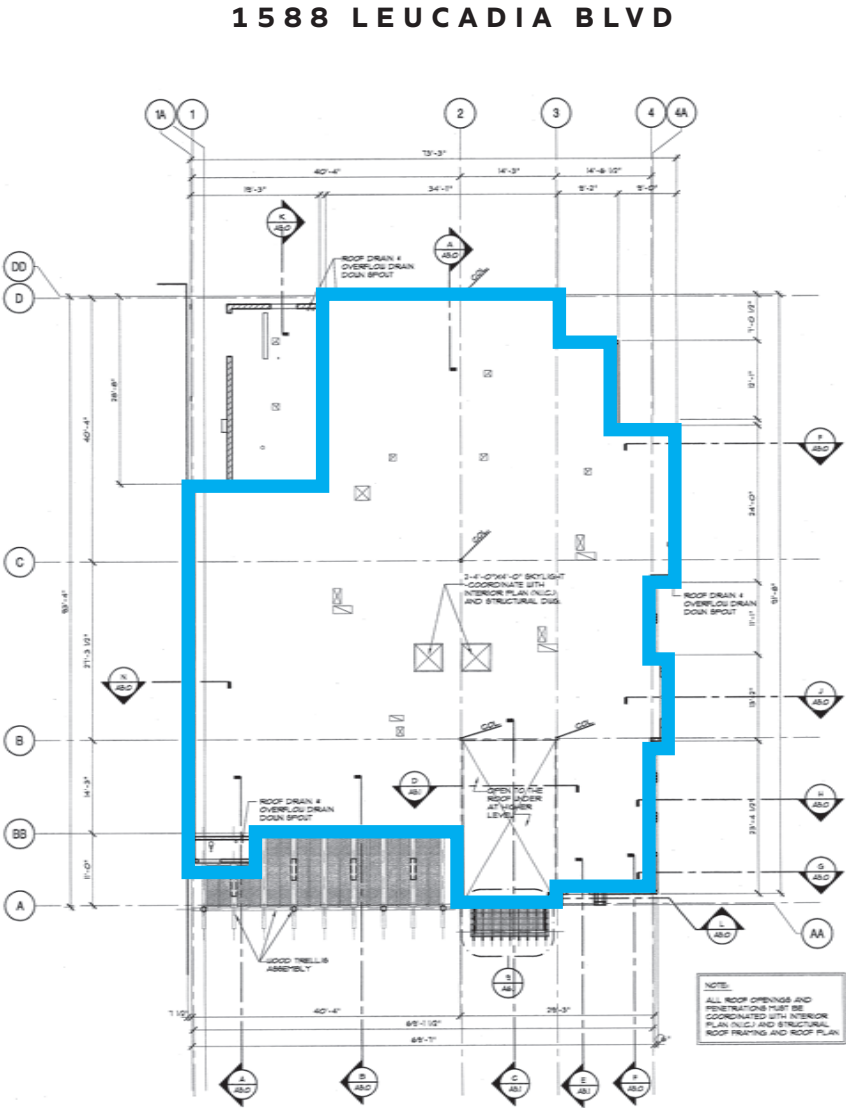
Site
Plan.

Suite	Tenant	SF
PLAZA AT ENCINITAS RANCH		
1560-D	AT&T	3,335
1588	AVAILABLE (Former Restaurant)	5,638
1560-A	Wild Fork (Coming Soon!)	3,354
1590	REI	22,500
1580	Shell Gas & Carwash	3,000
1560-B	Starbucks Coffee	1,400
1560-C	Subway	1,115
1550	Walmart	104,759
Kiosk	Bank of America ATM	60
Kiosk	My iFix	142



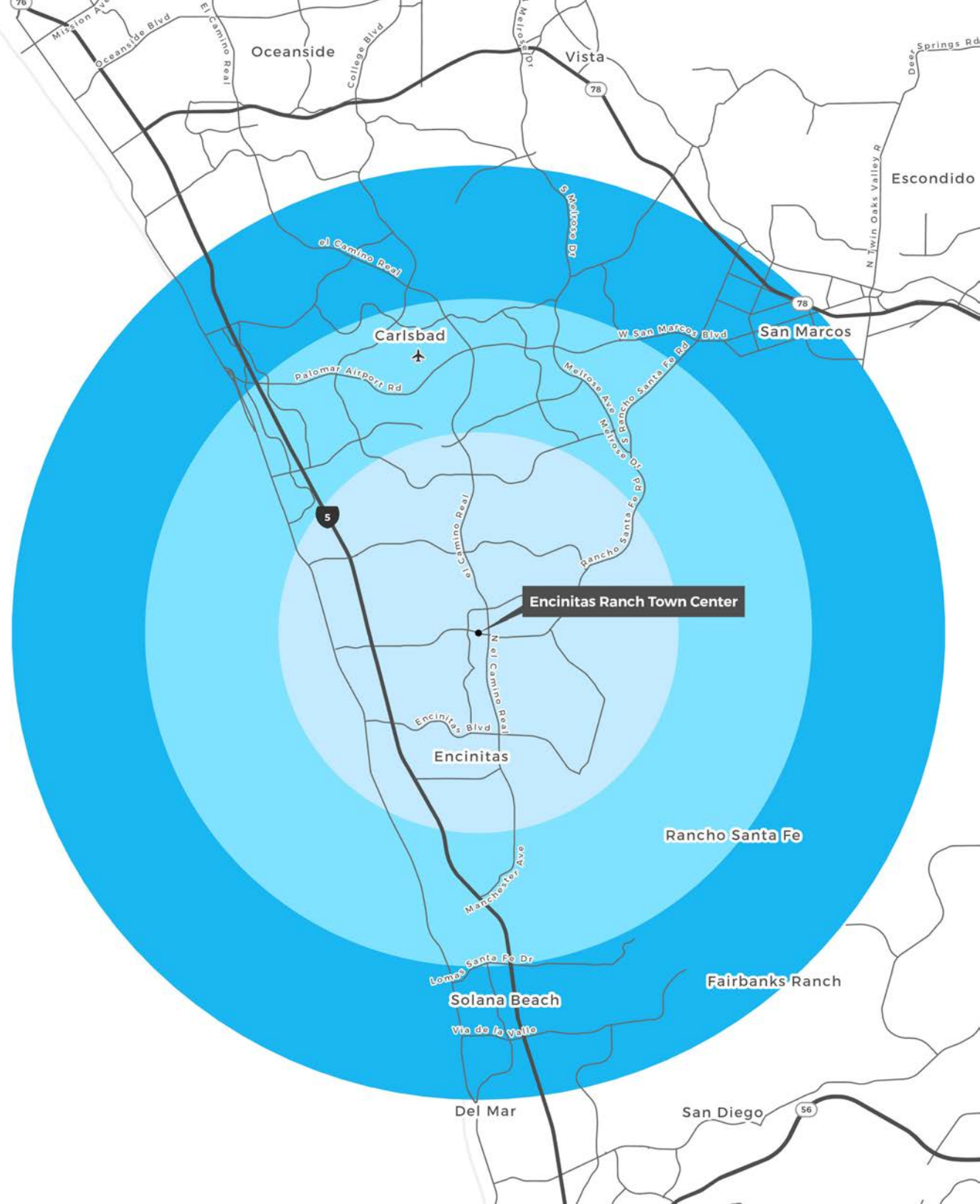
Availability.

1588 Leucadia Blvd · Former Restaurant
5,638 sf + patio



Former
Restaurant
AVAILABLE
5,638 SF
+ Patio

1588 LEUCADIA BLVD



Area Demographics.

6.87M
annual visits to the center,
making Encinitas Ranch Town
Center one of the **busiest**
centers in North County

156K
people within a 5-mile
radius, with an average
household income of over
\$166,000 per year

Total Population

Average Household Income

Total Households

Daytime Population

Median Age

167K

daytime employees within a
5-mile radius of the center

	3 MILES	5 MILES	7 MILES
Total Population	92,289	156,584	227,692
Average Household Income	\$165,367	\$166,081	\$156,969
Total Households	36,259	60,662	88,527
Daytime Population	93,355	167,661	259,174
Median Age	44.4	42.9	42.9

64%

of the population in the
immediate trade area has
earned a bachelor's degree
or higher

Analytics

mobile data shows
consistent traffic at the
center throughout the day



RI RETAIL INSITE

DON MOSER

858.523.2087

00821359

dmoser@retailinsite.net

MATT MOSER

858.523.2096

01772051

mmoser@retailinsite.net

MAYA GRIM

858.523.2094

01273486

mgrim@retailinsite.net

The information above has been obtained from sources believed to be reliable. While we do not doubt its accuracy, we have not verified it and make no guarantee, warranty or representation about it. It is your responsibility to independently confirm its accuracy and completeness. Any projections, opinions, assumptions or estimates used are for example only and do not represent the current or future performance of the property. The value of this transaction to you depends on tax and other factors which should be evaluated by your tax, financial and legal advisors. You and your advisors should conduct a careful, independent investigation of the property to determine to your satisfaction the suitability of the property for your needs.