



**UNION**

**Granite**  
graniteprop.com

# 143 UNION

143 Union is the premier Class-A office building in West Denver. Located in the highly-desirable Union Boulevard corridor, this 10-story building offers numerous walkable amenities and easy access to the Federal Center Light Rail Station. Additionally, 143 Union offers upgraded common areas, on-site amenities, including 1st floor conference room and Wells Fargo branch with drive-through, and views of the foothills and Downtown Denver.

**Granite**

Inspiring people to flourish through the places we create.



**RENOVATED  
LOBBY,  
COMMON AREAS  
& RESTROOMS**

# 143 UNION AT A GLANCE



## LOCATION

West Denver, Union Corridor  
12 Min Drive To Downtown

## ADDRESS

143 Union Blvd  
Lakewood, CO 80228

## BUILDING

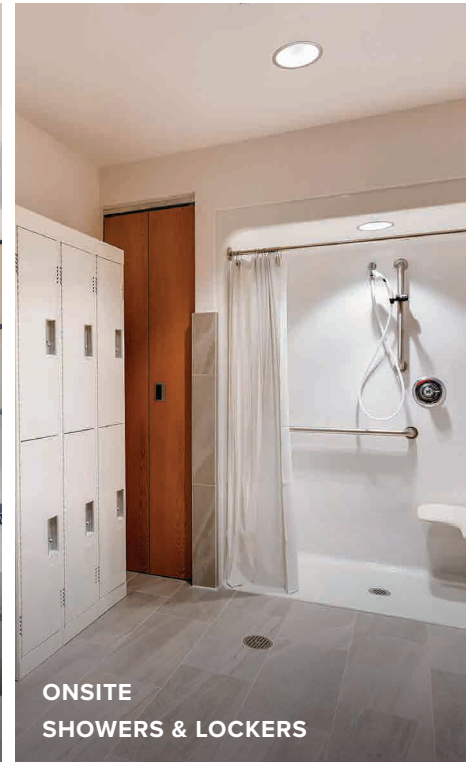
190,000 RSF, 10 Stories  
Energy Star Rated  
LEED® Silver  
On-site Property Management



CLASS-A LOBBY  
WITH BANK AMENITY



UPGRADED  
COMMON AREAS



ONSITE  
SHOWERS & LOCKERS



FEDERAL CENTER  
LIGHT RAIL STATION



FIRST FLOOR  
CONFERENCE ROOM



**13**  
UNION

Jason's deli

THAI RESTAURANTS  
**Tuk Tuk**  
TUKTUKROCKS.COM

240  
UNION  
A Creative Grille

**SUBWAY**

**Tokyo**  
JOE'S

Breakfast  
**Le Peep**  
Brunch \* Lunch

**CHIPOTLE**  
MEXICAN GRILL

**OLD CHICAGO**  
PIZZA & TAPROOM  
EST. 1976

**St. Anthony Summit  
Medical Center**  
Centura Health

15 MINUTES  
TO DOWNTOWN  
DENVER

 **RTD FEDERAL CENTER  
LIGHT RAIL STATION**



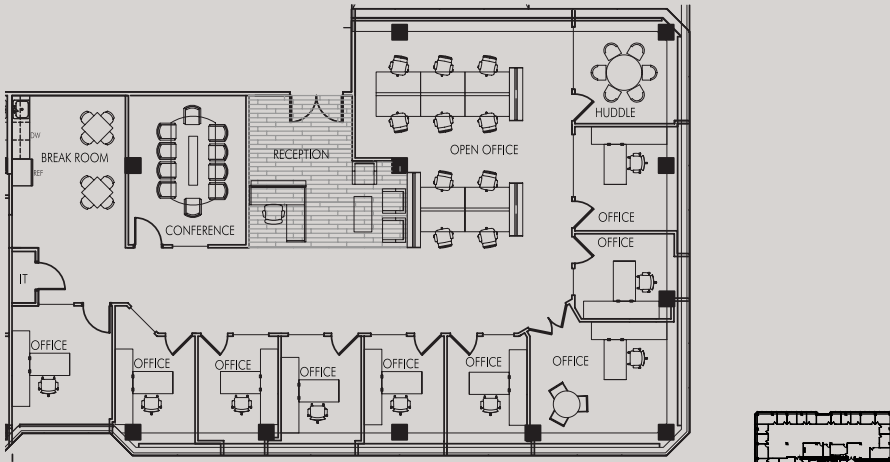
30+ WALKABLE AMENITIES



2 HOTELS WITHIN 1/2 MILE

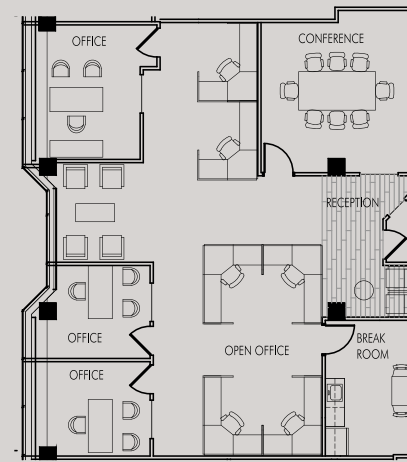
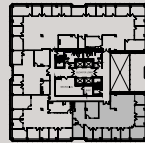


EASY ACCESS TO DOWNTOWN DENVER



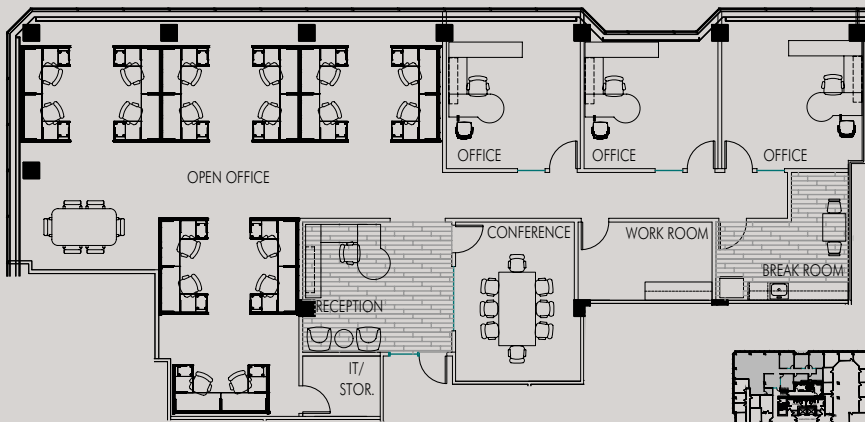
SUITE 220 4,215 RSF

KEY PLAN



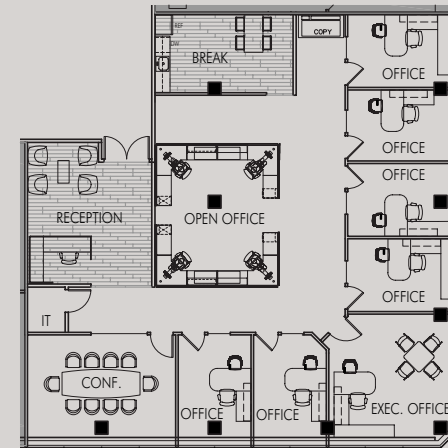
SUITE 270 2,225 RSF

KEY PLAN



SUITE 550 4,008 RSF

KEY PLAN



SUITE 850 3,465 RSF

KEY PLAN



**MOVE-IN READY SPEC SUITES AVAILABLE**

To learn more about 143 Union contact:

**Doug Wulf**, 303-312-4218, [doug.wulf@cushwake.com](mailto:doug.wulf@cushwake.com)

**Dan Miller**, 303-312-4272, [dan.miller@cushwake.com](mailto:dan.miller@cushwake.com)

**Andrew McCabe**, 303-312-4253, [andrew.mccabe@cushwake.com](mailto:andrew.mccabe@cushwake.com)

For more information about our Denver portfolio, contact:

**Stephanie Lawrence**, *Senior Managing Director*

303-592-2626, [slawrence@graniteprop.com](mailto:slawrence@graniteprop.com)

# Granite

Inspiring people to flourish through the places we create.

ATLANTA • DALLAS • DENVER • HOUSTON • SOUTHERN CALIFORNIA

[graniteprop.com](http://graniteprop.com)