

Industrial Land for Sale

11600 Strang Road, La Porte, TX 77571
±4,928 SF on 2.84 AC



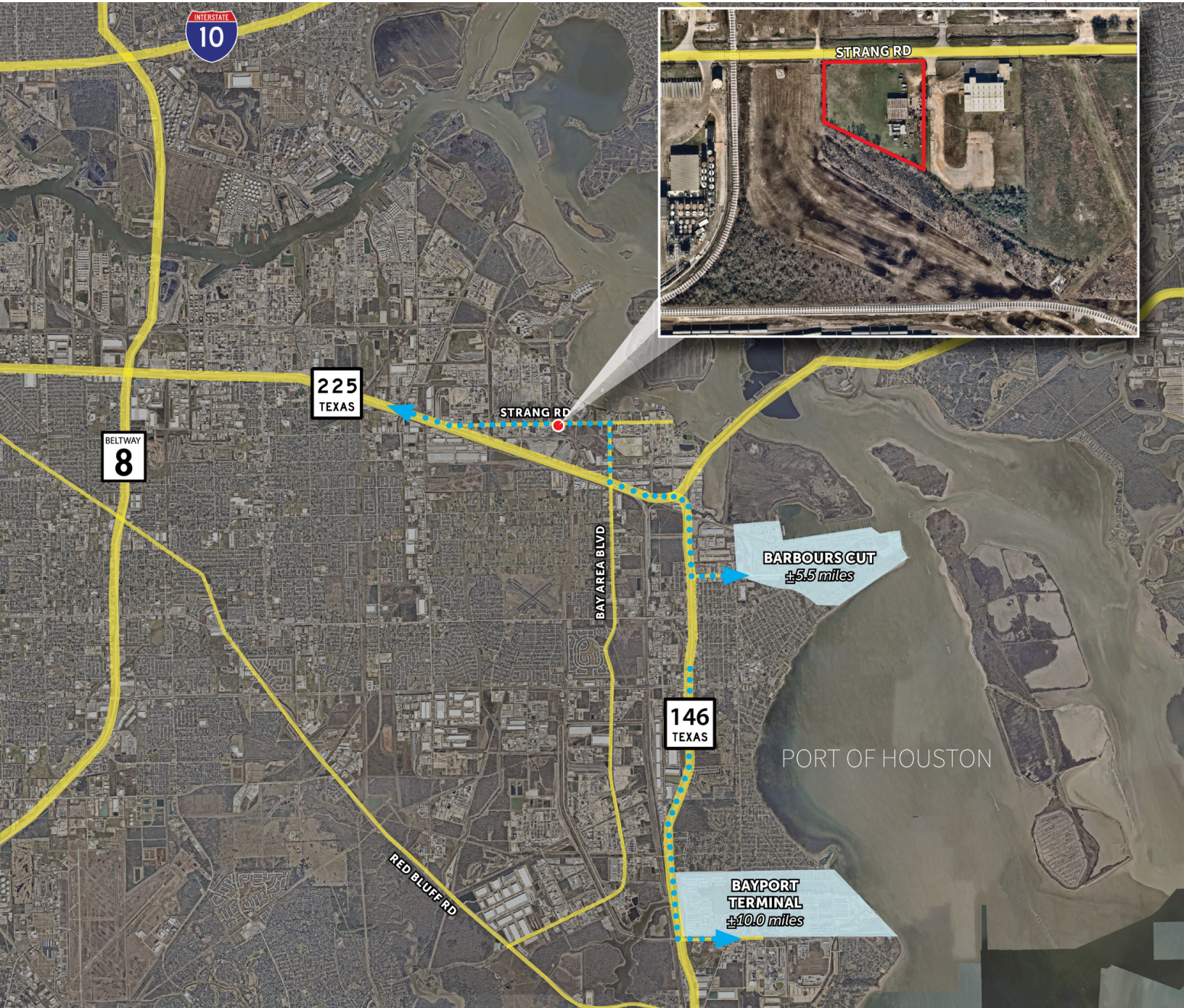
- **±2.84 Acres - partially stabilized**
- **4,928 SF shop**
 - Small office & restroom
 - Four (4) grade-level loading doors
 - One (1) drive-through bay
- Utilities to the site
- Not in floodplain
- Located in Unincorporated Harris County
- Close proximity to Port Houston Container Terminals
- Sale Price: Contact Broker

Ryan Fuselier
+1 713 888 4032
ryan.fuselier@jll.com

Katie (Madden) Tyra
+1 713 818 1286
katie.tyra@jll.com

Industrial Land For Sale

±2.84 partially stabilized acres available



Ryan Fuselier
+1 713 888 4032
ryan.fuselier@jll.com

Katie (Madden) Tyra
+1 713 818 1286
katie.tyra@jll.com