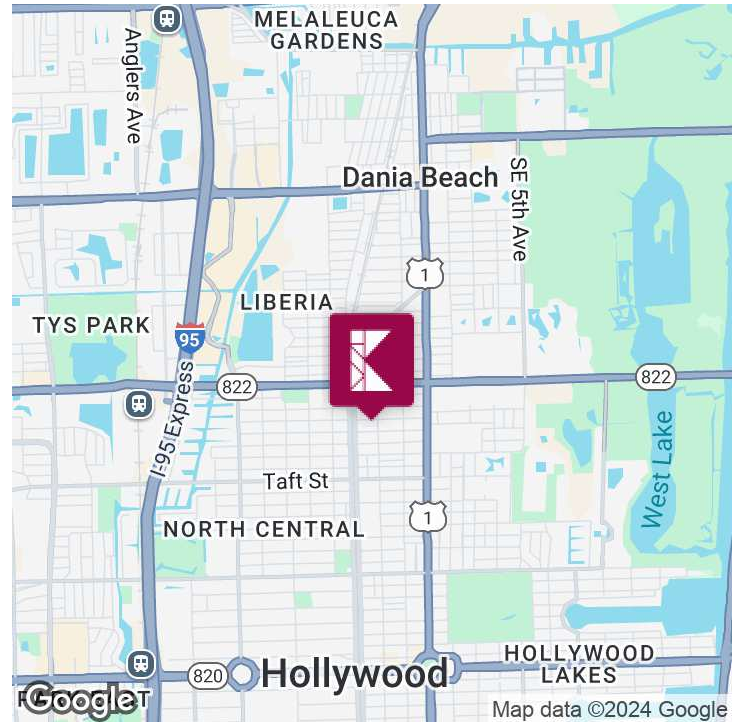
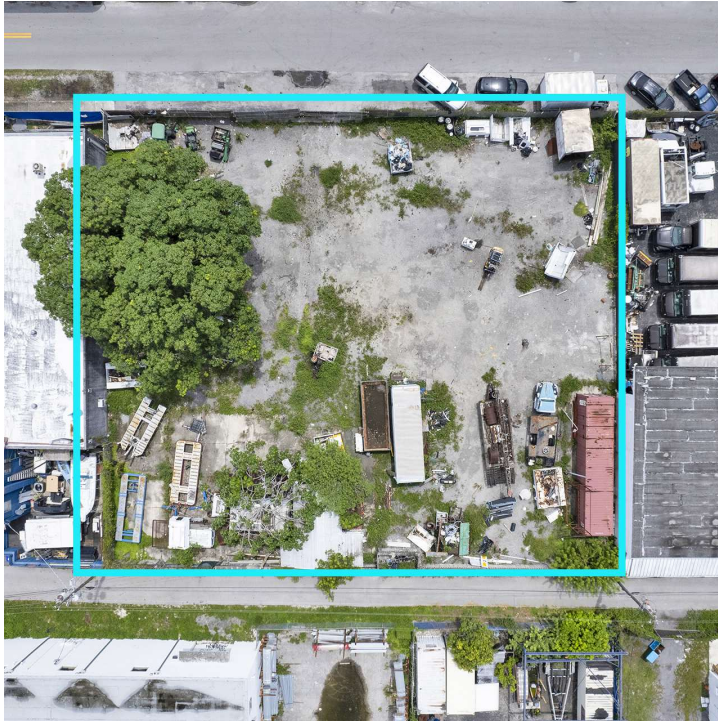


2017 SCOTT ST

Executive Summary



OFFERING SUMMARY

Lease Rate:	\$13,500.00
Available SF:	0.5 Acres
Lot Size:	20,102 SF
Year Built:	1939
Zoning:	DH3

PROPERTY OVERVIEW

A+++ Location in Hollywood, FL. The available space is 0.5 acre lot. The lot is currently being used as outdoor storage and parking. Liberal DH-3 Industrial Zoning. Introducing 2017 Scott St, a prime commercial property in the heart of Hollywood, FL. This exceptional space offers versatile leasing opportunities, boasting modern architecture and ample square footage to accommodate a range of business needs. With its strategic location, this property provides excellent visibility and access. The well-appointed interior features high ceilings, expansive windows, and customizable floor plans, allowing for a seamless blend of functionality and style. Tenants will appreciate the convenience of dedicated parking and proximity to amenities. Don't miss the chance to elevate your business in this sought-after location.

PROPERTY HIGHLIGHTS

DEMOGRAPHICS	0.3 MILES	0.5 MILES	1 MILE
Total Households	767	2,495	10,244
Total Population	1,883	5,935	23,360
Average HH Income	\$49,773	\$59,554	\$67,419