



MEDICAL OFFICE BUILDING

9617 S Pennsylvania Avenue

Oklahoma City, Oklahoma 73159

PROPERTY OVERVIEW

Address: 9617 S Pennsylvania Ave.
Oklahoma City, OK 73159

Property Type: Stand-alone Medical
Office Building

Building Size: 5,874 Square Feet

Acreage: 36,590 Square Feet
(0.84 Acres)

Year Built: 2003

Asking Price: \$1.9M (\$325/SF)



- Stand-alone medical office building with a [full surgical suite](#).
- Great floor plan with numerous exam and consultation rooms.
- Generator for the operating room.
- Visibility on busy S Pennsylvania (traffic count of 21,104 cars per day).
- 36 parking spaces.
- Convenient location near fast-growing Moore, South OKC, and Norman.



For more
information
contact:

Kriegel Commercial Real Estate LLC
Tel. 405.695.6500 | Cell 405.613.2674
Julie@okcoffice.com

MEDICAL OFFICE BUILDING

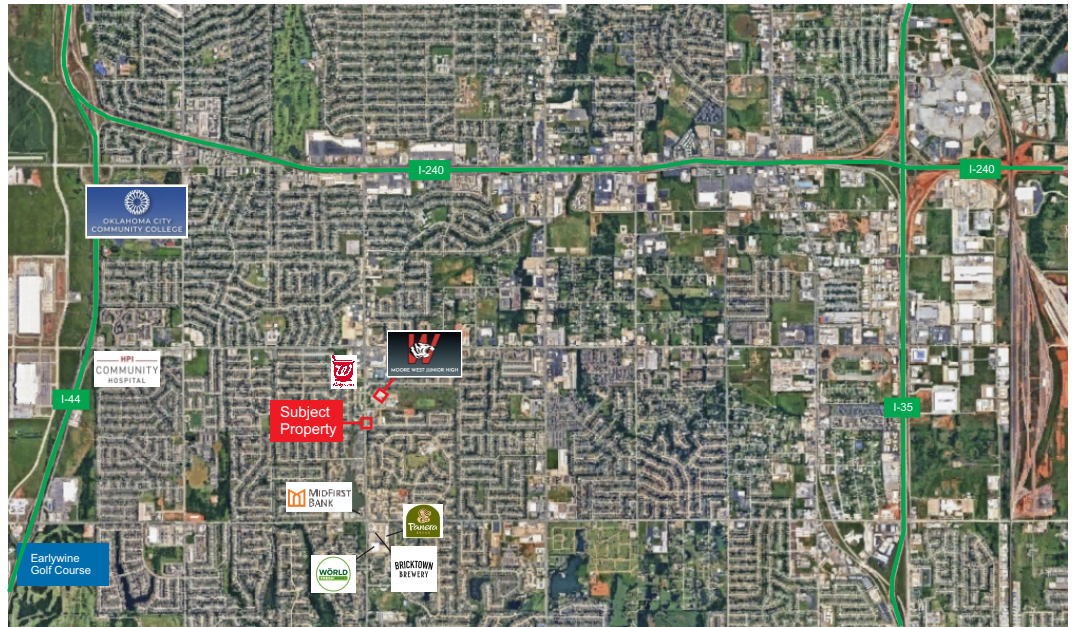
9617 S Pennsylvania Avenue

Oklahoma City, Oklahoma 73159

PROPERTY SITE PLAN



AERIAL MAP



Notice: The information in this marketing package is provided for informational purposes only. It is from sources believed to be reliable. However, Kriegel Commercial Real Estate makes no warranties or representations, expressed or implied, as to the accuracy or sufficiency of the information. It is presented subject to errors, omissions, changes, or withdrawal without notice.



MEDICAL OFFICE BUILDING

9617 S Pennsylvania Avenue

Oklahoma City, Oklahoma 73159

PROPERTY FLOOR PLAN

