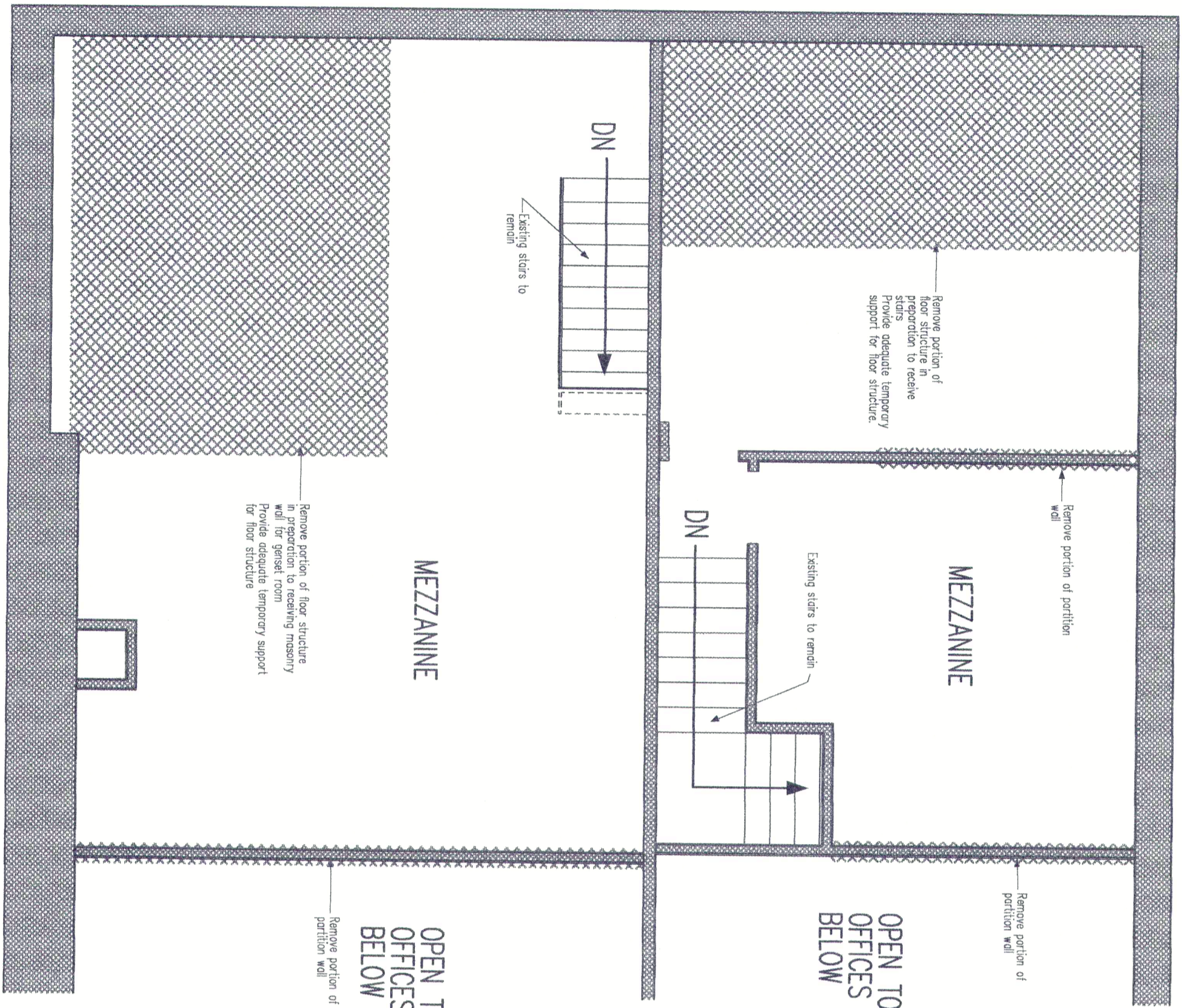


FIRST AVENUE NORTH



Existing Mezzanine Floor
1/4" = 1'-0"

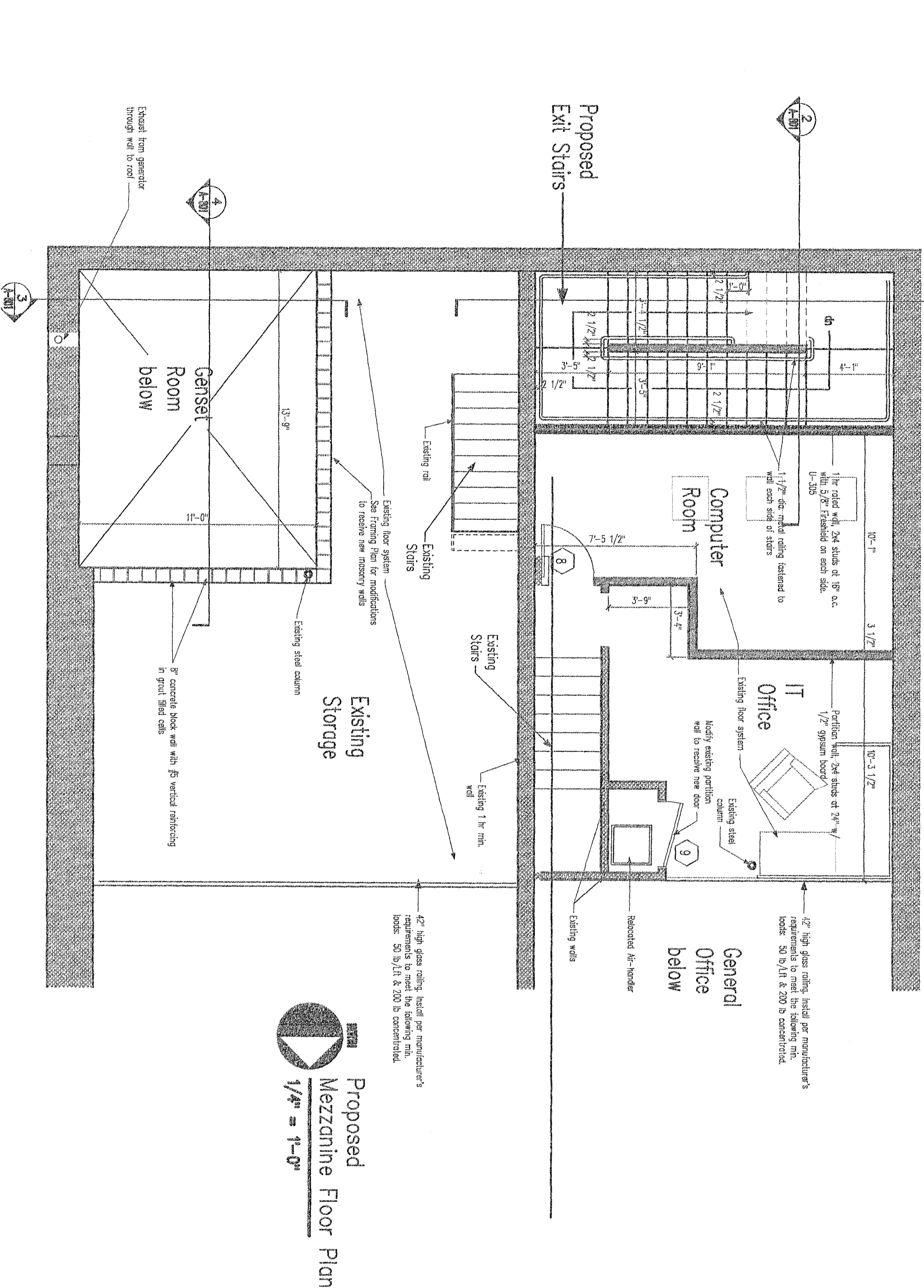
WIND DATA

Wind Speed	130mph
Wind Importance Factor	1
Exposure Category	B
Ht. & Exposure Coef.	1
Internal Pressure Coef.	.18, fully enclosed
Cladding Design Pressures	12.4/-51.0

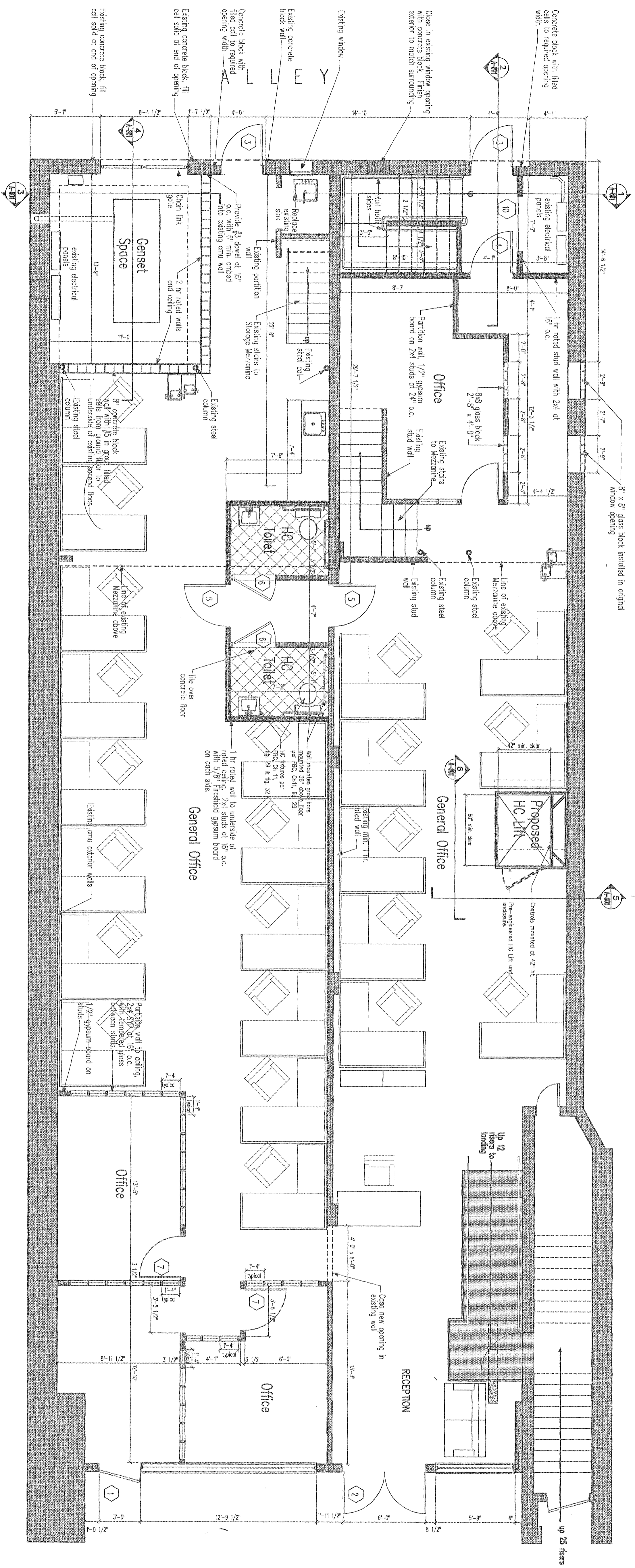
Existing First Floor Plan
1/4" = 1'-0"

BUILDING DATA

Lot Area	4247 sqft (.1 acre)
First Floor Area	3437 sqft.
Mezzanine Area	297 sqft.
Mezzanine Storage Area	395 sqft.
Second Floor Area	3726 sqft.
Total Area	7855 sqft.
Building Height	31'-6"
Zoning	DC-C
Construction Type	III
Occupancy	Business
Occupant Load at 1person/100 sqft	79 persons



Proposed Mezzanine Floor Plan
1/4" = 1'-0"



Proposed First Floor Plan
1/4" = 1'-0"

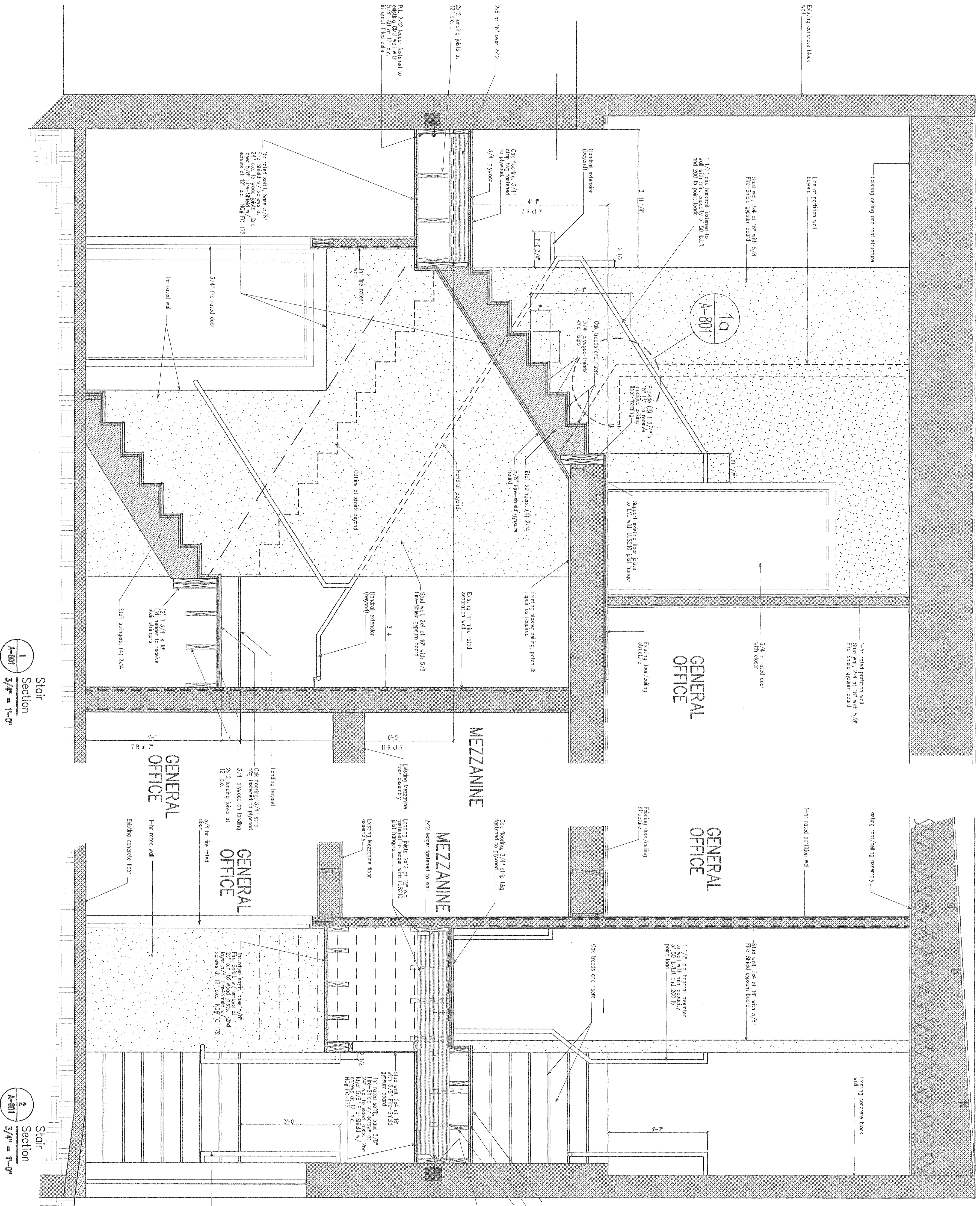
WIND DATA

Wind Speed	138mph
Wind Importance Factor	1
Exposure Category	9
Ht. & Exposure Coef.	1
Internal Pressure Coef.	.18, fully enclosed
Cladding Design Pressures	12.4 / 51.0

BUILDING DATA

Lot Area	4247 sqft. (.1 acre)
First Floor Area	3437 sqft.
Mezzanine Area	297 sqft.
Mezzanine Storage Area	395 sqft.
Second Floor Area	3726 sqft.
Total Area	7855 sqft.
Building Height	31'-6"
Zoning	DC-C
Construction Type	III

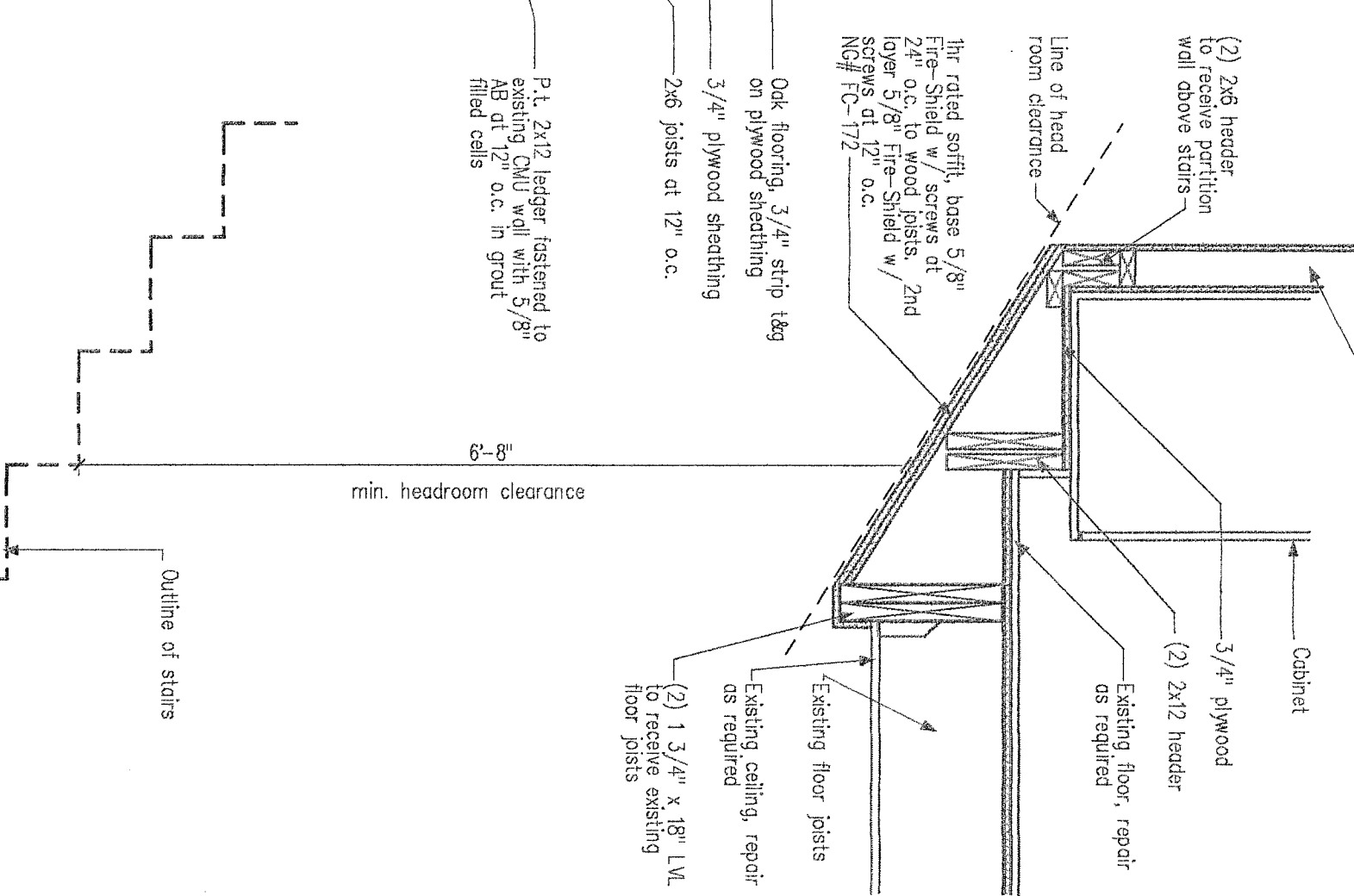
FIRST AVENUE NORTH



1 Section
A-801 3/4\"/>

2 Section
A-801 3/4\"/>

Stair Header Detail



Alley