

INDUSTRIAL PROPERTY FOR LEASE
2721 10TH STREET
2721 10TH ST, NORTHPORT, AL 35476



PROPERTY DESCRIPTION

2721 10th Street offers a functional industrial facility totaling 16,380 SF with approximately 2,000 SF of office space. The layout includes private offices, a reception area, conference room, kitchen, and restrooms serving both the office and warehouse areas. The warehouse features an open layout with three drive-in doors and a side laydown yard, supporting efficient operations and flexible use.

LOCATION DESCRIPTION

Located in Northport's established warehouse district, 2721 10th Street provides convenient access to McFarland Boulevard (Hwy 82) and key industrial corridors serving the greater Tuscaloosa area. The surrounding area is home to a mix of construction, service, and industrial users, making it well suited for businesses requiring efficient access, yard space, and functional infrastructure.

PROPERTY HIGHLIGHTS

- 16,380 SF industrial building
- ±2,000 SF of finished office space
- Side laydown yard
- Three drive-in doors
- Private offices, conference room, reception, and kitchen

OFFERING SUMMARY

Lease Rate:	\$6.00 SF/yr (NNN)
Number of Units:	1
Available SF:	16,380 SF
Building Size:	16,380 SF

RICHARD HENRY

205.236.5396

info@rightspacecre.com

INDUSTRIAL PROPERTY FOR LEASE
2721 10TH STREET
2721 10TH ST, NORTHPORT, AL 35476



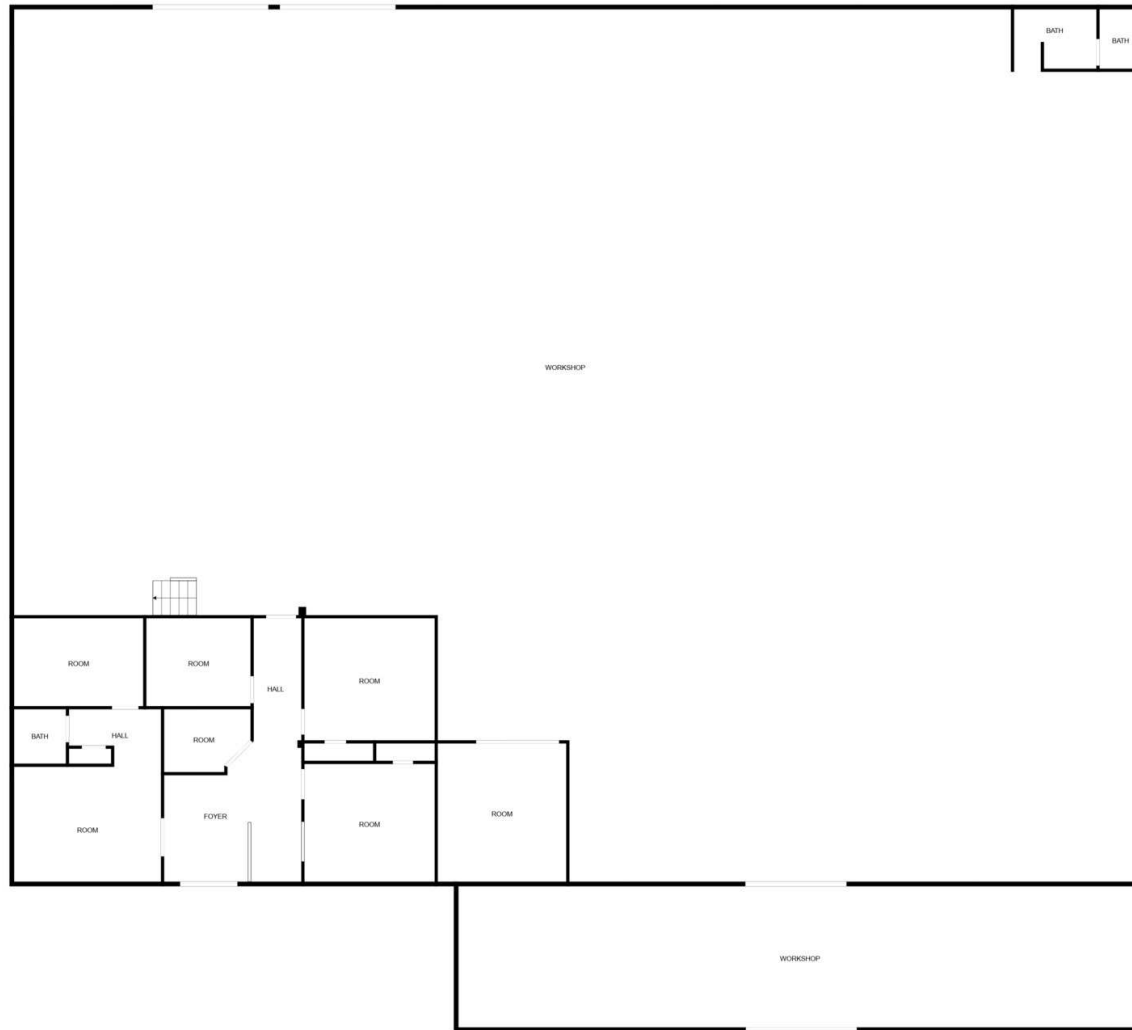
RICHARD HENRY

205.236.5396

info@rightspacecre.com

RS
RIGHT SPACE
rightspacecre.com

INDUSTRIAL PROPERTY FOR LEASE
2721 10TH STREET
2721 10TH ST, NORTHPORT, AL 35476



FLOOR PLAN CREATED BY CUBICASA APP. MEASUREMENTS DEEMED HIGHLY RELIABLE BUT NOT GUARANTEED.

RICHARD HENRY

205.236.5396

info@rightspacecre.com

INDUSTRIAL PROPERTY FOR LEASE
2721 10TH STREET
2721 10TH ST, NORTHPORT, AL 35476



RICHARD HENRY

205.236.5396

info@rightspacecre.com



rightspacecre.com

INDUSTRIAL PROPERTY FOR LEASE
2721 10TH STREET
2721 10TH ST, NORTHPORT, AL 35476



RICHARD HENRY

Direct: 205.236.5396
info@rightspacecre.com