

CUSTOM OFFICE & RETAIL IN TUALATIN

Diamond Peak Plaza 8101 SW Nyberg Street, Tualatin OR 97062

FOR LEASE



Our Diamond Peak Plaza is located in downtown Tualatin, near Tualatin Lake at the Commons. This two-level retail and office building has been beautifully renovated and features a new ADA elevator, secure building access system, a water feature, and abundant parking with EV charging. Interior upgrades include modern finishes throughout with eco-friendly products to enhance the building's aesthetic. Monument signage and digital directories direct visitors to the building.

Tricia Anderson

tricia@northrimpx.com | 503.525.1927



northrimpx.com

819 SE Morrison Street, Ste 110, Portland OR 97214 | [503.525.1925](tel:503.525.1925)

Matthew Schweitzer | matt@northrimpx.com | [503.381.3134](tel:503.381.3134)

CUSTOM OFFICE AND RETAIL IN TUALATIN

Diamond Peak Plaza 8101 SW Nyberg Street, Tualatin OR 97062

FOR LEASE

Walk Score



"Very Walkable"

Transit Score



"Some Transit"

Bike Score



"Very Bikeable"

DIAMOND PEAK PLAZA

Property Details

- Ground-floor retail spaces
- Upper-level custom offices
- Approximately 17,000 sq. ft. building with spaces ranging from 300 to 2,700 sq. ft.
- ADA accessible with elevator service
- High efficiency heating and cooling
- Green Certified finishes
- Secure access system
- Private parking lot with electric car chargers

Location Details

- In the heart of downtown Tualatin near Tualatin Lake at the Commons
- Across from Nyberg Rivers shopping center with New Seasons and Cabela's
- Just ½ mile from I-5
- Near Tualatin Station and Tualatin Park & Ride

Demographics

(City of Tualatin)

- Population (2025): 27,979
- Average Household Income (2025): \$100,750
- Median Resident Age (2025): 36.74

Daily Traffic Count

(SW Martinazzi Ave. and Nyberg St.)

TOTAL: 15,000

Tricia Anderson
tricia@northrimpx.com | 503.525.1927



northrimpx.com

819 SE Morrison Street, Ste 110, Portland OR 97214 | 503.525.1925

Matthew Schweitzer | matt@northrimpx.com | 503.381.3134



CONFERENCE ROOM



LOBBY



CUSTOM OFFICE AND RETAIL IN TUALATIN

Diamond Peak Plaza 8101 SW Nyberg Street, Tualatin OR 97062

FOR LEASE

Tricia Anderson
tricia@northrimpx.com | [503.525.1927](tel:503.525.1927)



northrimpx.com

819 SE Morrison Street, Ste 110, Portland OR 97214 | [503.525.1925](tel:503.525.1925)

Matthew Schweitzer | matt@northrimpx.com | [503.381.3134](tel:503.381.3134)

CUSTOM OFFICE AND RETAIL IN TUALATIN

Diamond Peak Plaza 8101 SW Nyberg Street, Tualatin OR 97062

FOR LEASE



SUITE #205



Virtual Tour
Suite 205

tinyurl.com/DiamondPk205



Tricia Anderson
tricia@northrimpx.com | [503.525.1927](tel:503.525.1927)



northrimpx.com

819 SE Morrison Street, Ste 110, Portland OR 97214 | [503.525.1925](tel:503.525.1925)

Matthew Schweitzer | matt@northrimpx.com | [503.381.3134](tel:503.381.3134)



Virtual Tour
Suite 217

tinyurl.com/DiamondPk217



SUITE #217

CUSTOM OFFICE AND RETAIL IN TUALATIN

Diamond Peak Plaza 8101 SW Nyberg Street, Tualatin OR 97062

FOR LEASE

Tricia Anderson
tricia@northrimpx.com | [503.525.1927](tel:503.525.1927)



northrimpx.com

819 SE Morrison Street, Ste 110, Portland OR 97214 | [503.525.1925](tel:503.525.1925)
Matthew Schweitzer | matt@northrimpx.com | [503.381.3134](tel:503.381.3134)



Virtual Tour
Suite 223

tinyurl.com/DiamondPk223



SUITE #223

CUSTOM OFFICE AND RETAIL IN TUALATIN

Diamond Peak Plaza 8101 SW Nyberg Street, Tualatin OR 97062

FOR LEASE

Tricia Anderson
tricia@northrimpdx.com | [503.525.1927](tel:503.525.1927)

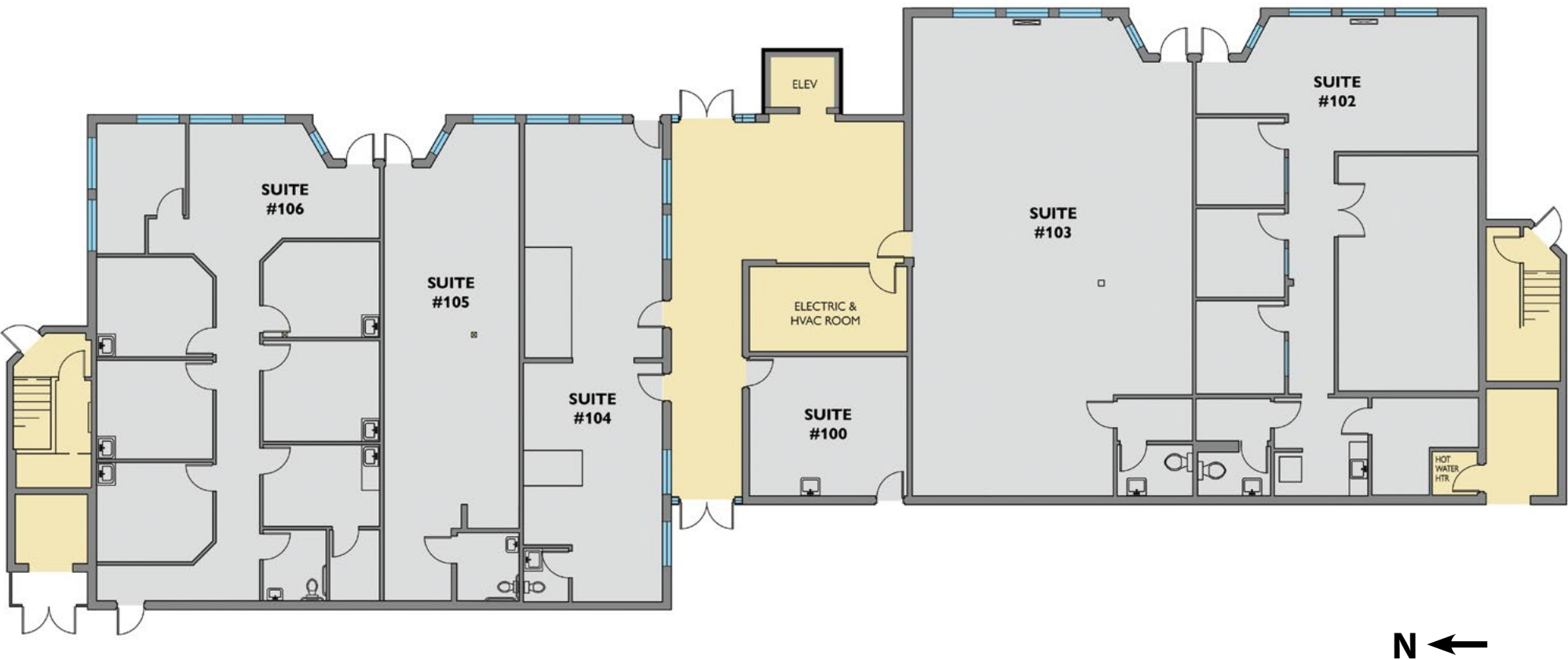


northrimpdx.com

819 SE Morrison Street, Ste 110, Portland OR 97214 | [503.525.1925](tel:503.525.1925)
Matthew Schweitzer | matt@northrimpdx.com | [503.381.3134](tel:503.381.3134)

FLOOR PLAN

1st Floor



CUSTOM OFFICE AND RETAIL IN TUALATIN
 Diamond Peak Plaza 8101 SW Nyberg Street, Tualatin OR 97062

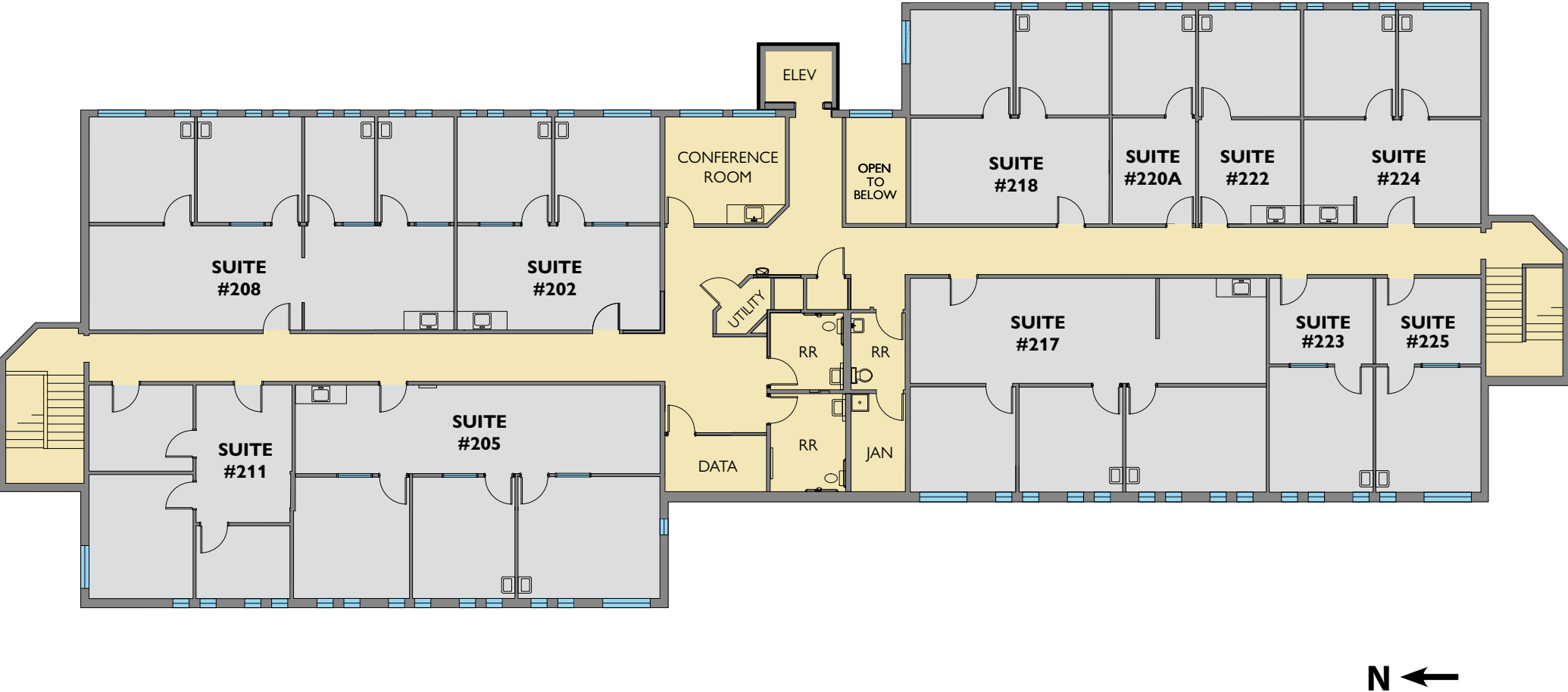
FOR LEASE

Tricia Anderson
tricia@northrimpx.com | 503.525.1927



northrimpx.com
 819 SE Morrison Street, Ste 110, Portland OR 97214 | [503.525.1925](tel:503.525.1925)
 Matthew Schweitzer | matt@northrimpx.com | [503.381.3134](tel:503.381.3134)

FLOOR PLAN
2nd Floor



CUSTOM OFFICE AND RETAIL IN TUALATIN

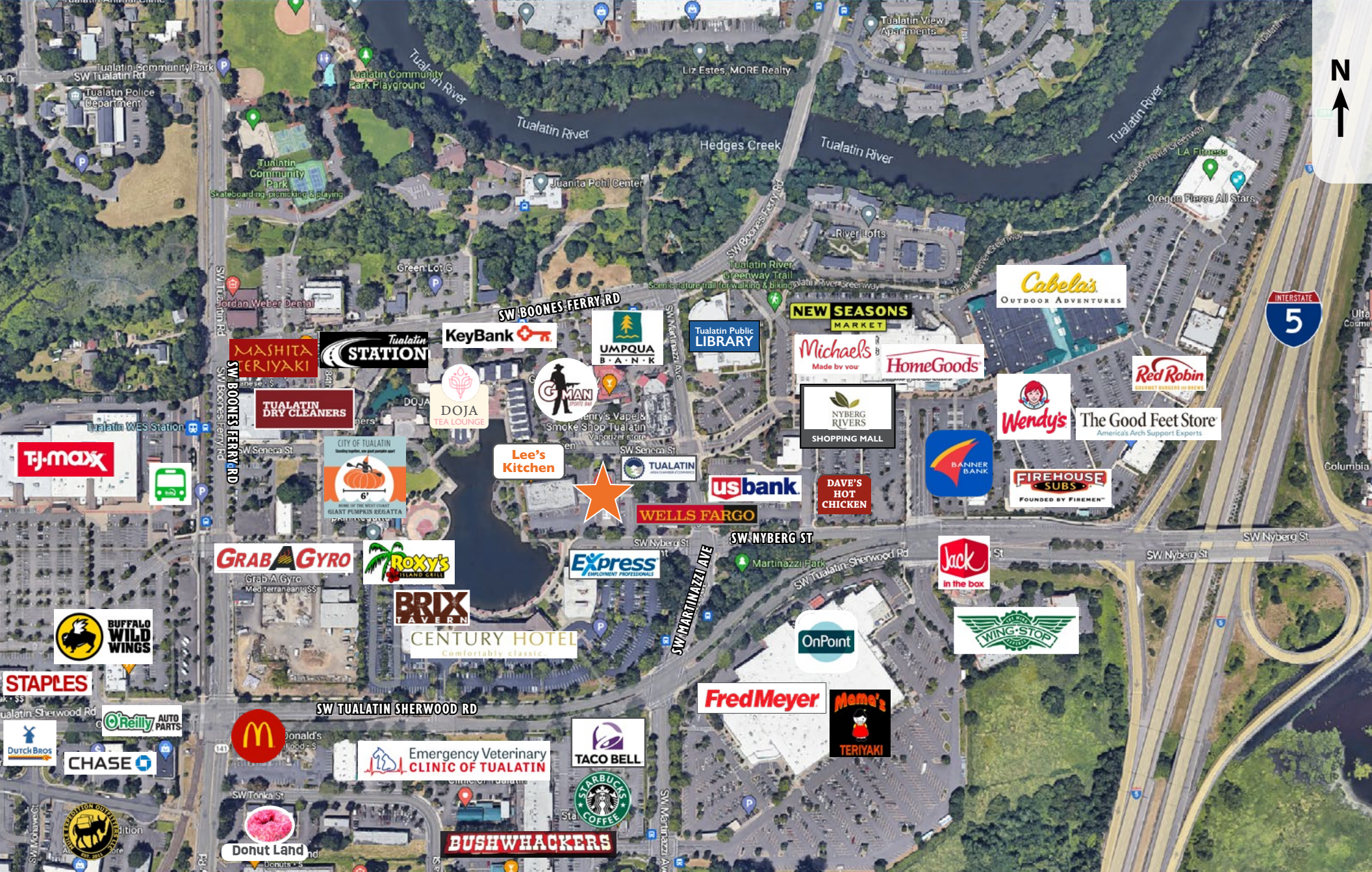
Diamond Peak Plaza 8101 SW Nyberg Street, Tualatin OR 97062

FOR LEASE

Tricia Anderson
tricia@northrimpx.com | 503.525.1927



northrimpx.com
819 SE Morrison Street, Ste 110, Portland OR 97214 | [503.525.1925](tel:503.525.1925)
Matthew Schweitzer | matt@northrimpx.com | [503.381.3134](tel:503.381.3134)



CUSTOM OFFICE AND RETAIL IN TUALATIN

Diamond Peak Plaza 8101 SW Nyberg Street, Tualatin OR 97062

FOR LEASE



northrim

northrim

819 SE Morrison Street, Ste 110, Portland OR 97214 | 503.525.1925

Matthew Schweitzer | matt@northrim.com | 503.381.3134

northrim

819 SE Morrison Street, Ste 110, Portland OR 97214 | 503.525.1925

Matthew Schweitzer | matt@northrim.com | 503.381.3134

The information contained in this package has been obtained from sources we believe to be reliable. While we do not doubt its accuracy, we have not verified it and make no guarantee, warranty or representation about it. It is your sole responsibility to independently confirm its accuracy and completeness. Any projections, opinions, assumptions or estimates used are for example only and do not represent the current or future performance of the property. ©2025 North Rim Commercial Properties