

NEW VIEW BUSINESS PARK - LOT 2 C

PROPERTY DETAILS

FOR SALE

\$1,260,000

OFFERING SUMMARY

Sale Price	\$1,260,000
Lot Size	8.61 Acres

PROPERTY SUMMARY

Address	Goodman Drive, Lot 2 C Lewisberry, PA 17339
Municipality	Fairview
County	York
Tax Parcel #	27000QG0120.WO

PROPERTY DESCRIPTION

A very unique opportunity to purchase a pad-ready site with the ability to construct and own up to 18,000 SF. Flex building potential on an 8.61-acre site located in the New View Business Park.

LOCATION DESCRIPTION

Property is located in Fairview Township along Industrial Drive. The property has direct access to I-83 via Exit 35. Amazon, Chewy, Fedex Hub, Georgia Pacific, Broder Brothers, and many other national firms with operations in the immediate area.

PROPERTY HIGHLIGHTS

- Pad-ready site for up to 18,000 SF
- Great highway access; directly off exit ramp
- Light industrial, flex, commercial, and wholesale
- New Sheetz directly adjacent to site opening 2026

PROPERTY INFORMATION

Property Taxes	To be determined; upon construction completion
Drive-Ins	To be determined by buyer
Traffic Counts	I-83 North and South - 72,134 ADT

UTILITIES & ZONING

Zoning	CB - Commercial Business; permits light industrial, wholesaling, research and development, medical clinic, retail, etc.
Zoning Description	Check zoning ordinance for a complete list of permitted uses.

Daniel J. Alderman
dalderman@naicir.com | 717 761 5070

Information concerning this offering comes from sources deemed reliable, but no warranty is made as to the accuracy thereof, and it is submitted subject to errors, omissions, change of price or other conditions, prior sale or lease, or withdrawal without notice. All sizes approximate. PA License #RB024320A

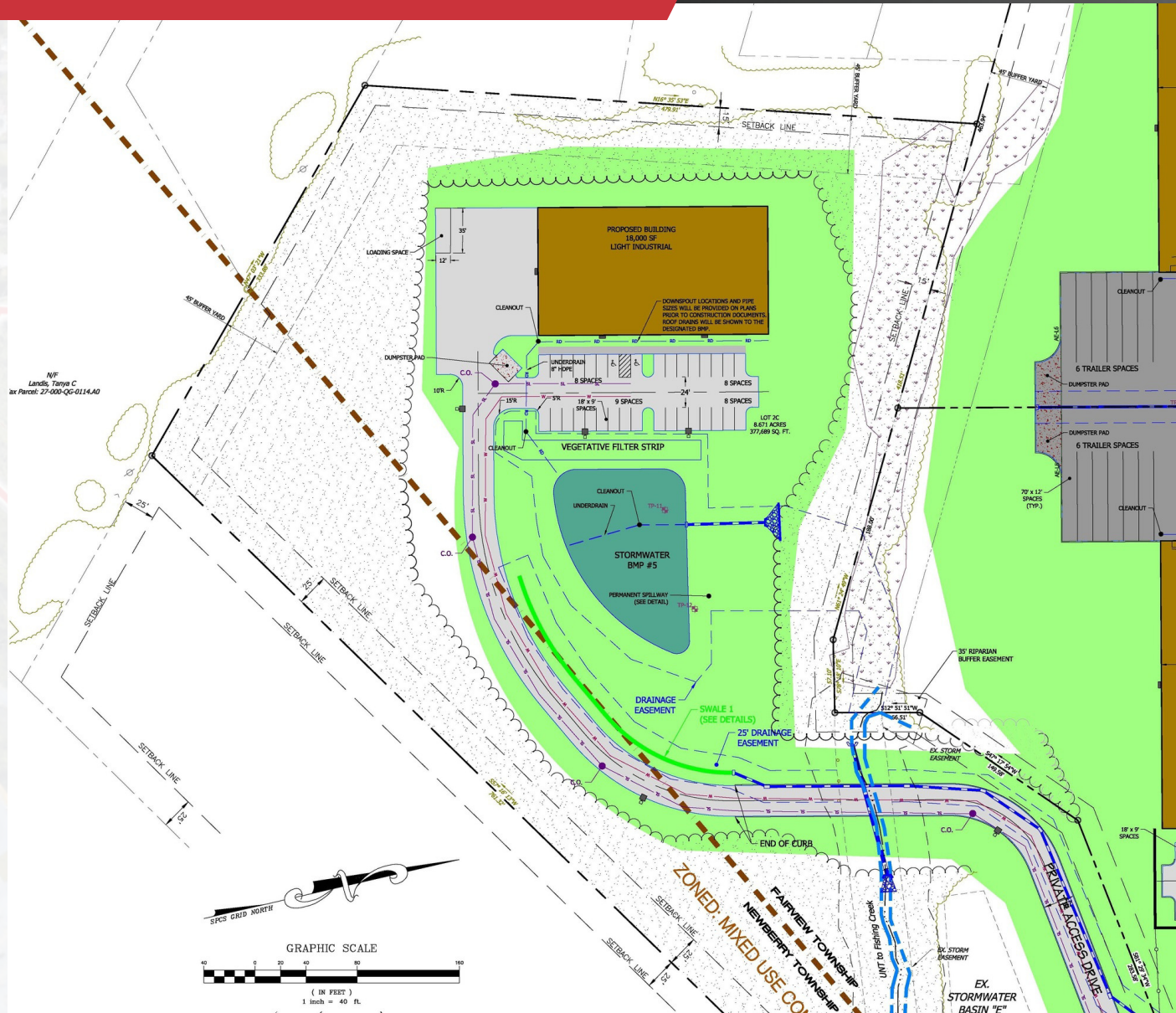
1015 Mumma Road
Lemoyne, PA 17043
circommercial.com

NAICIR

NEW VIEW BUSINESS PARK - LOT 2 C

LOT 2 C BUILDING PLAN

FOR SALE
\$1,260,000



Daniel J. Alderman
dalderman@naicir.com | 717 761 5070

Information concerning this offering comes from sources deemed reliable, but no warranty is made as to the accuracy thereof, and it is submitted subject to errors, omissions, change of price or other conditions, prior sale or lease, or withdrawal without notice. All sizes approximate. PA License #RB024320A

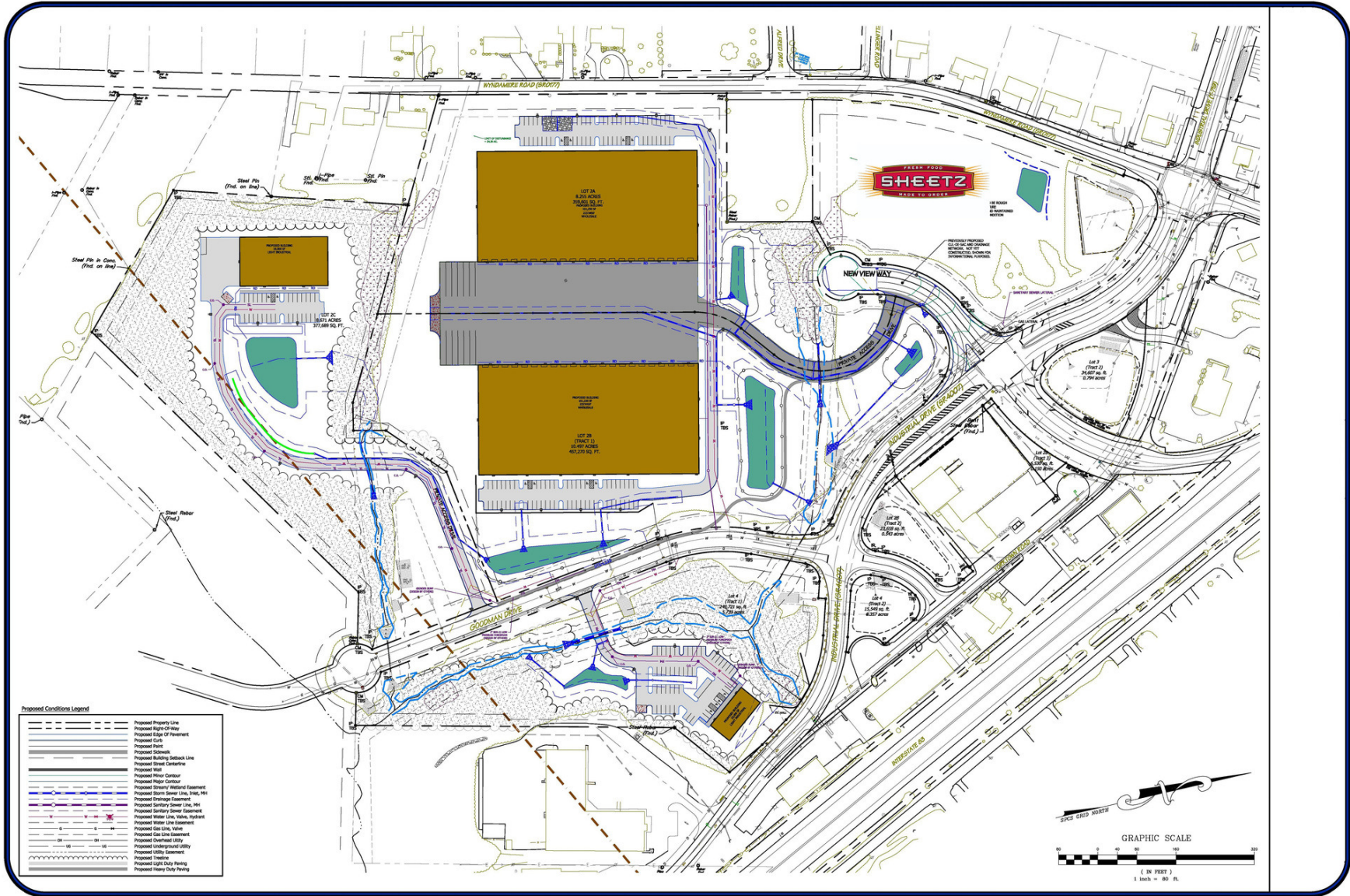
1015 Mumma Road
Lemoyne, PA 17043
circommercial.com

NAICIR

NEW VIEW BUSINESS PARK - LOT 2 C

OVERALL DEVELOPMENT PLAN

FOR SALE
\$1,260,000



Daniel J. Alderman
dalderman@naicir.com | 717 761 5070

Information concerning this offering comes from sources deemed reliable, but no warranty is made as to the accuracy thereof, and it is submitted subject to errors, omissions, change of price or other conditions, prior sale or lease, or withdrawal without notice. All sizes approximate. PA License #RB024320A



1015 Mumma Road
Lemoyne, PA 17043
circommercial.com



NEW VIEW BUSINESS PARK - LOT 2 C

RETAIL MAP

FOR SALE
\$1,260,000



Daniel J. Alderman
dalderman@naicir.com | 717 761 5070

Information concerning this offering comes from sources deemed reliable, but no warranty is made as to the accuracy thereof, and it is submitted subject to errors, omissions, change of price or other conditions, prior sale or lease, or withdrawal without notice. All sizes approximate. PA License #RB024320A

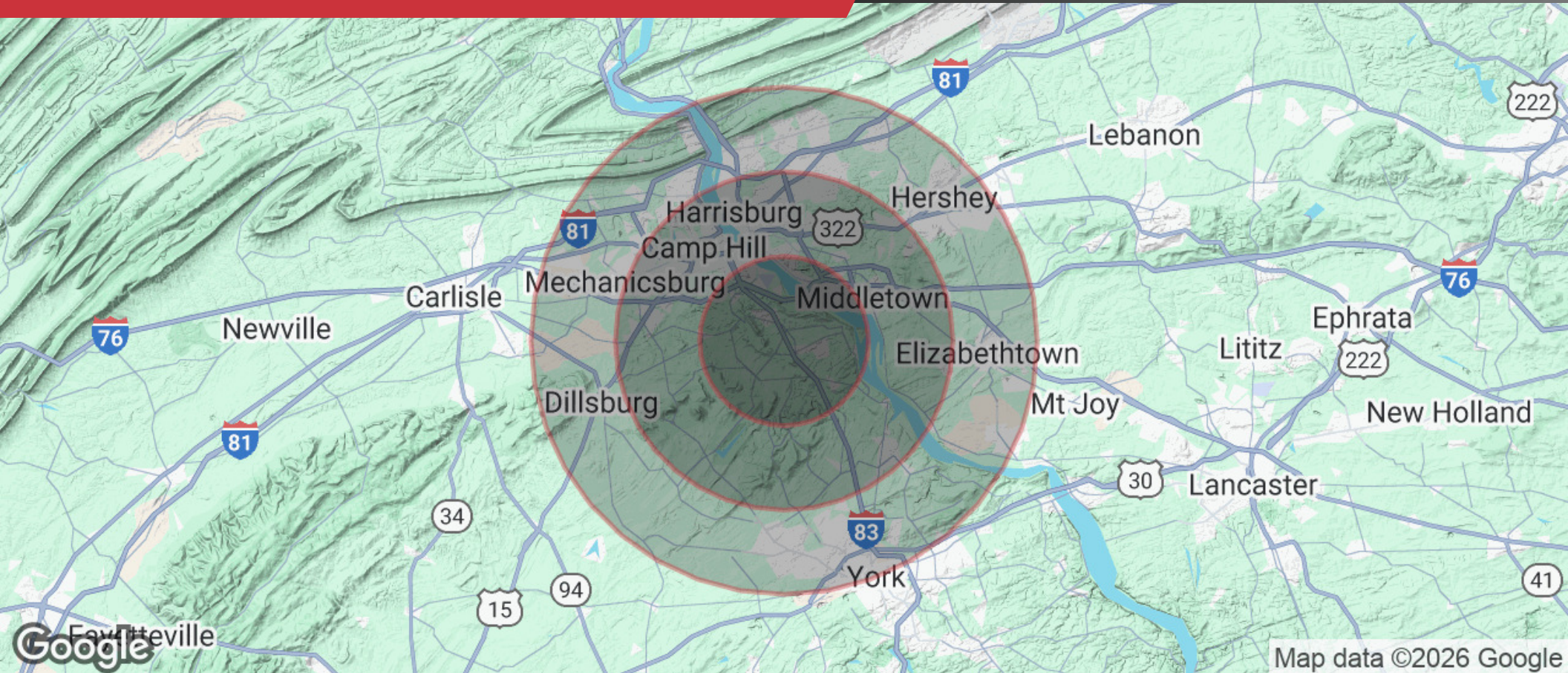
1015 Mumma Road
Lemoyne, PA 17043
circommercial.com

NAICIR

NEW VIEW BUSINESS PARK - LOT 2 C

DEMOGRAPHICS

FOR SALE
\$1,260,000



POPULATION

5 MILES	10 MILES	15 MILES
49,015	321,460	628,145



HOUSEHOLDS

5 MILES	10 MILES	15 MILES
19,920	128,747	250,756



INCOME

5 MILES	10 MILES	15 MILES
\$107,402	\$101,909	\$106,645

Daniel J. Alderman

dalderman@naicir.com | 717 761 5070

Information concerning this offering comes from sources deemed reliable, but no warranty is made as to the accuracy thereof, and it is submitted subject to errors, omissions, change of price or other conditions, prior sale or lease, or withdrawal without notice. All sizes approximate. PA License #RB024320A



1015 Mumma Road
Lemoyne, PA 17043
circommercial.com

NAICIR