

FLEX BUILDING FOR LEASE

9157 WHISKEY BOTTOM RD, BAYS 1-3
LAUREL, MARYLAND

- 6,660 square feet of warehouse/flex space
- 17-foot clear ceilings
- Multiple drive-in docks
- Zoned CECLI
- Easy access to Rt. 95, 295 and 32

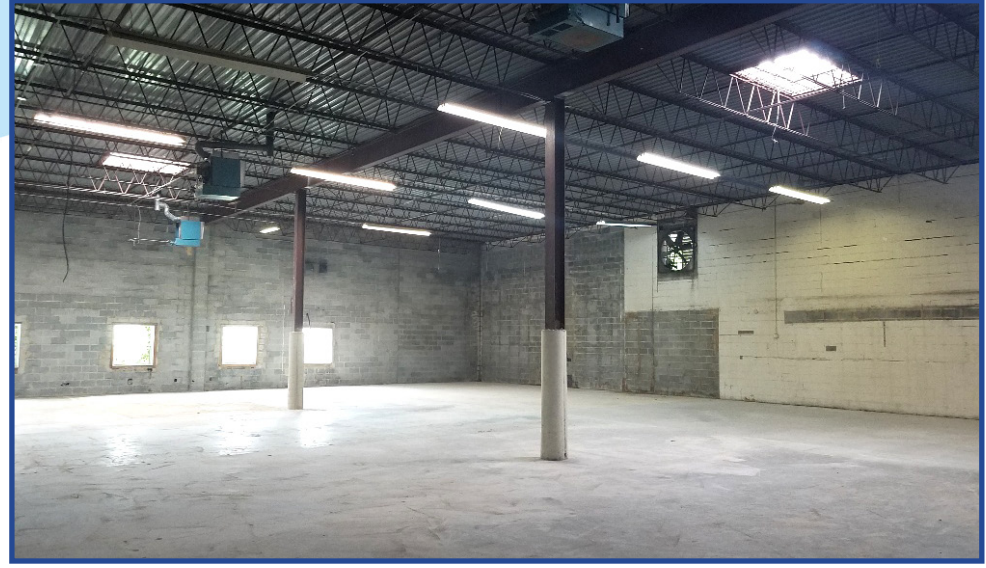


C. Russell Rowzie, CPM Principal, Trimark Corporation
703.930.7610 rrowzie@trimarkcorporation.com

6231 Leesburg Pike Falls Church VA 22044-2102 703.891.2600 www.trimarkcorporation.com

FLEX BUILDING FOR LEASE

9157 WHISKEY BOTTOM ROAD, LAUREL, MARYLAND; BAYS 1-3

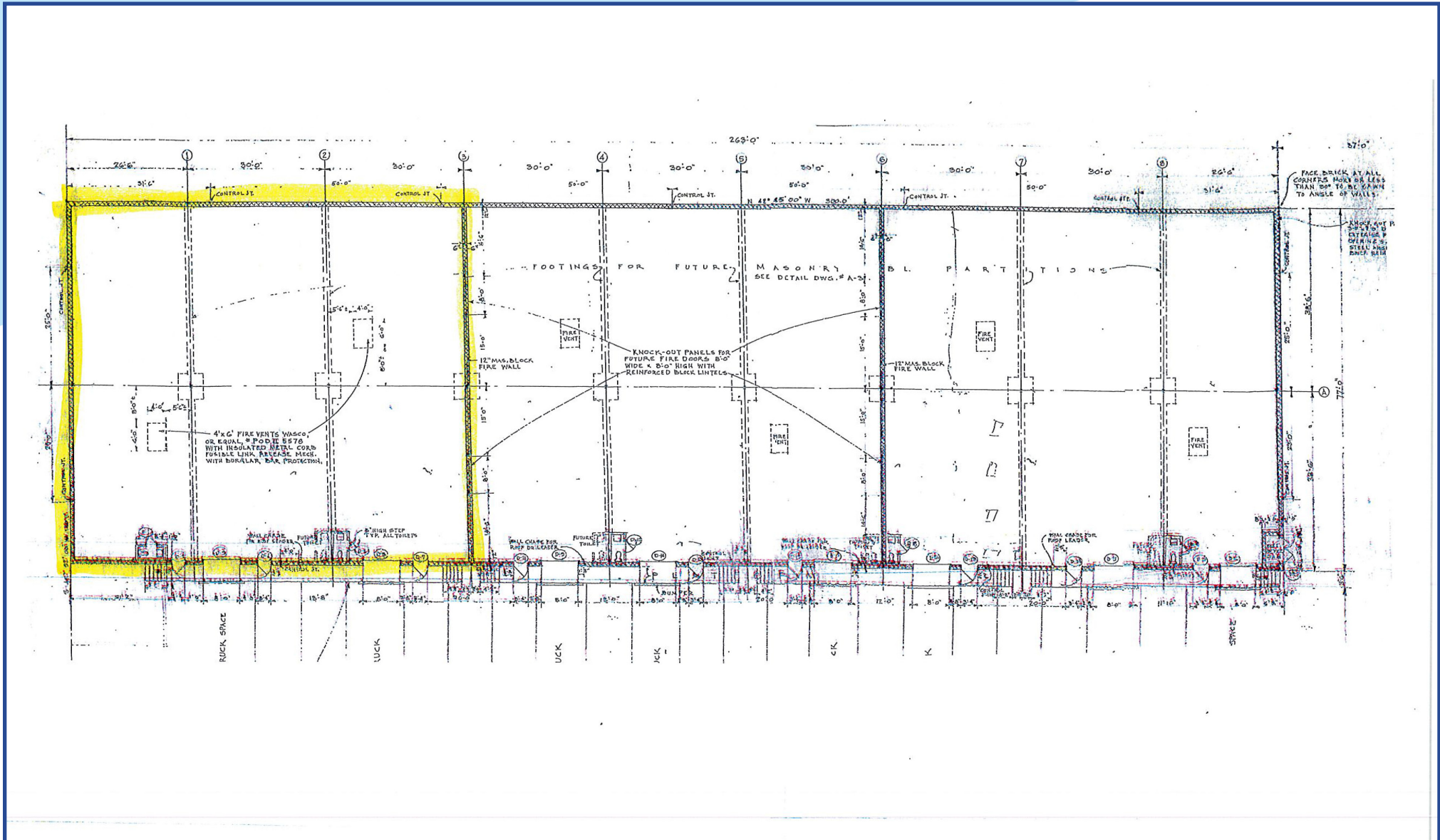


C. Russell Rowzie, CPM Principal, Trimark Corporation
703.930.7610 rrowzie@trimarkcorporation.com

6231 Leesburg Pike Falls Church VA 22044-2102 703.891.2600 www.trimarkcorporation.com

FLEX BUILDING FOR LEASE

9157 WHISKEY BOTTOM ROAD, LAUREL, MARYLAND; BAYS 1-3

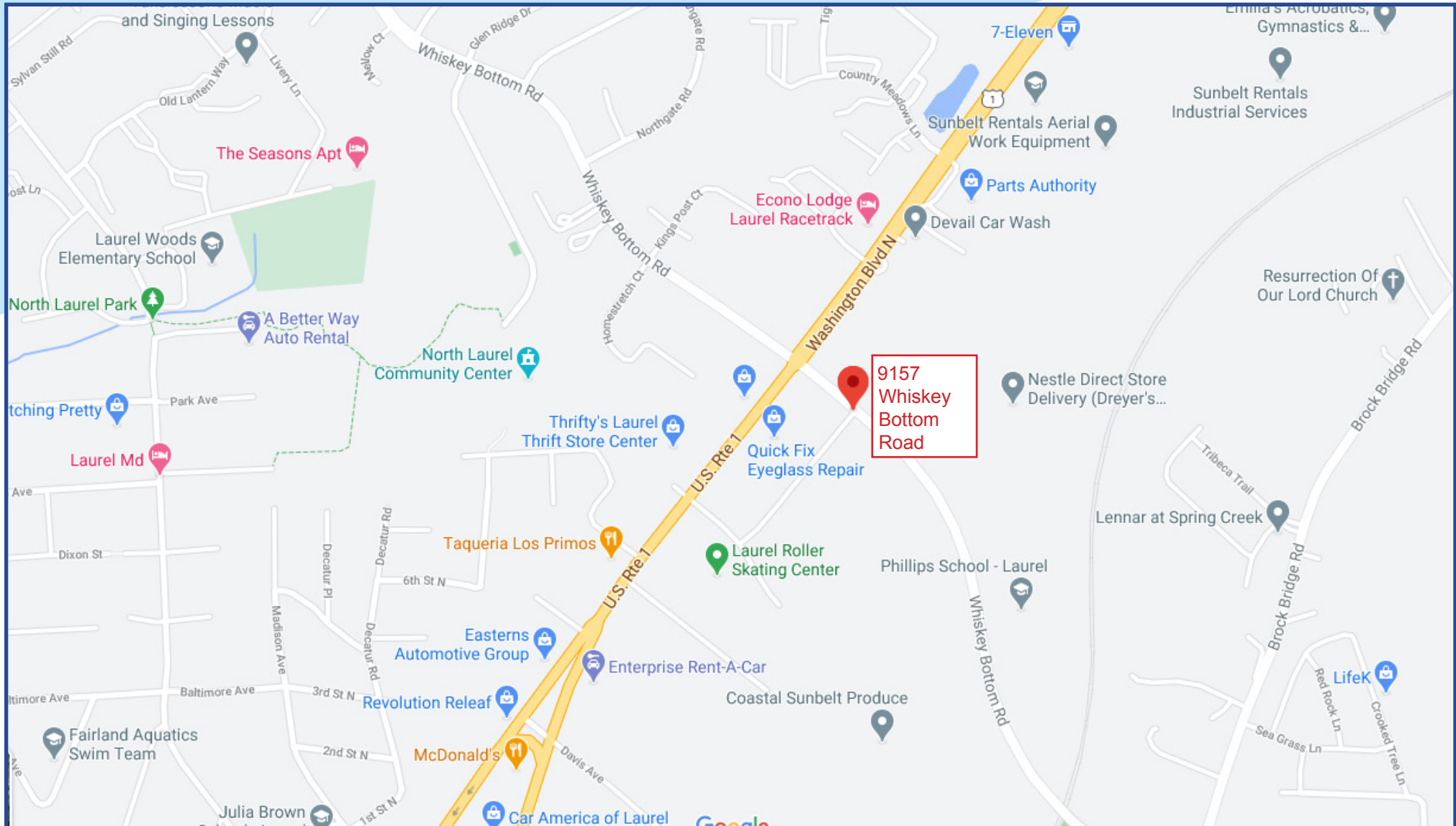


C. Russell Rowzie, CPM Principal, Trimark Corporation
703.930.7610 rowzie@trimarkcorporation.com

6231 Leesburg Pike Falls Church VA 22044-2102 703.891.2600 www.trimarkcorporation.com

FLEX BUILDING FOR LEASE

9157 WHISKEY BOTTOM ROAD, LAUREL, MARYLAND; BAYS 1-3



C. Russell Rowzie, CPM Principal, Trimark Corporation
703.930.7610 rowzie@trimarkcorporation.com

6231 Leesburg Pike Falls Church VA 22044-2102 703.891.2600 www.trimarkcorporation.com