

# LAKEWOOD BUSINESS PARK

FOR LEASE

Building A 10107, Building C 10109, Building D 10111, Building E 10029, Building G 10027, Building H 10025, South Tacoma Way  
Lakewood, WA

## PREMIER FLEX OFFICE/INDUSTRIAL AND FENCED YARD SPACES ON SOUTH TACOMA WAY

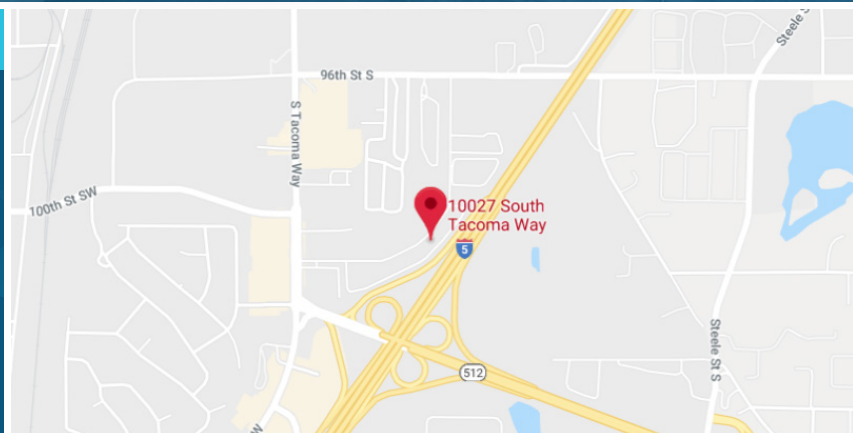


FULL 5% COMMISSION TO  
OUTSIDE BROKER

Directly off I-5, Lakewood Business Park is strategically located in the heart of the Pierce County industrial market, with access via South Tacoma Way and 32nd Avenue South.

### PROPERTY FEATURES

- Yard space available
- High traffic with frontage to Interstate 5
- 10 miles to Port of Tacoma
- Easy access to Interstate 5 and Highway 512
- Zoned Airport Corridor 1 (AC1)
- Grade level loading



**NICK RATZKE, SIOR**  
253.779.2414  
nratzke@neilwalter.com

**JOHN DEHAN**  
253.779.2433  
jdehan@neilwalter.com

All information references in this document are approximate. The information contained herein is contained from sources deemed reliable. It is provided without representation, warranty, or guarantee, expressed or implied as to accuracy. Prospective buyer or tenant should conduct its own independent investigation relating to the property, government codes and regulations, allowed uses, and all other matters, regardless of whether they are referred to or contained in this document.



# LAKEWOOD BUSINESS PARK

Building A 10107, Building C 10109, Building D 10111, Building E 10029, Building G 10027, Building H 10025, South Tacoma Way  
Lakewood, WA



## AVAILABLE SUITES

Bldg-Suite	Total SF	Office SF	Loading	Rates	Availability
D5	6,136 SF	<1,000 SF	2 GL (Oversized)	\$1.15/SF + NNN	Sublease*
H9	5,511 SF	3,239 SF	2 GL	\$1.15/SF + NNN	10/1/2024
Yard Lot 4	5,439 SF	N/A	N/A	\$0.30/SF Gross	Now

\*Potential direct deal



**NICK RATZKE, SIOR**  
253.779.2414  
nratzke@neilwalter.com

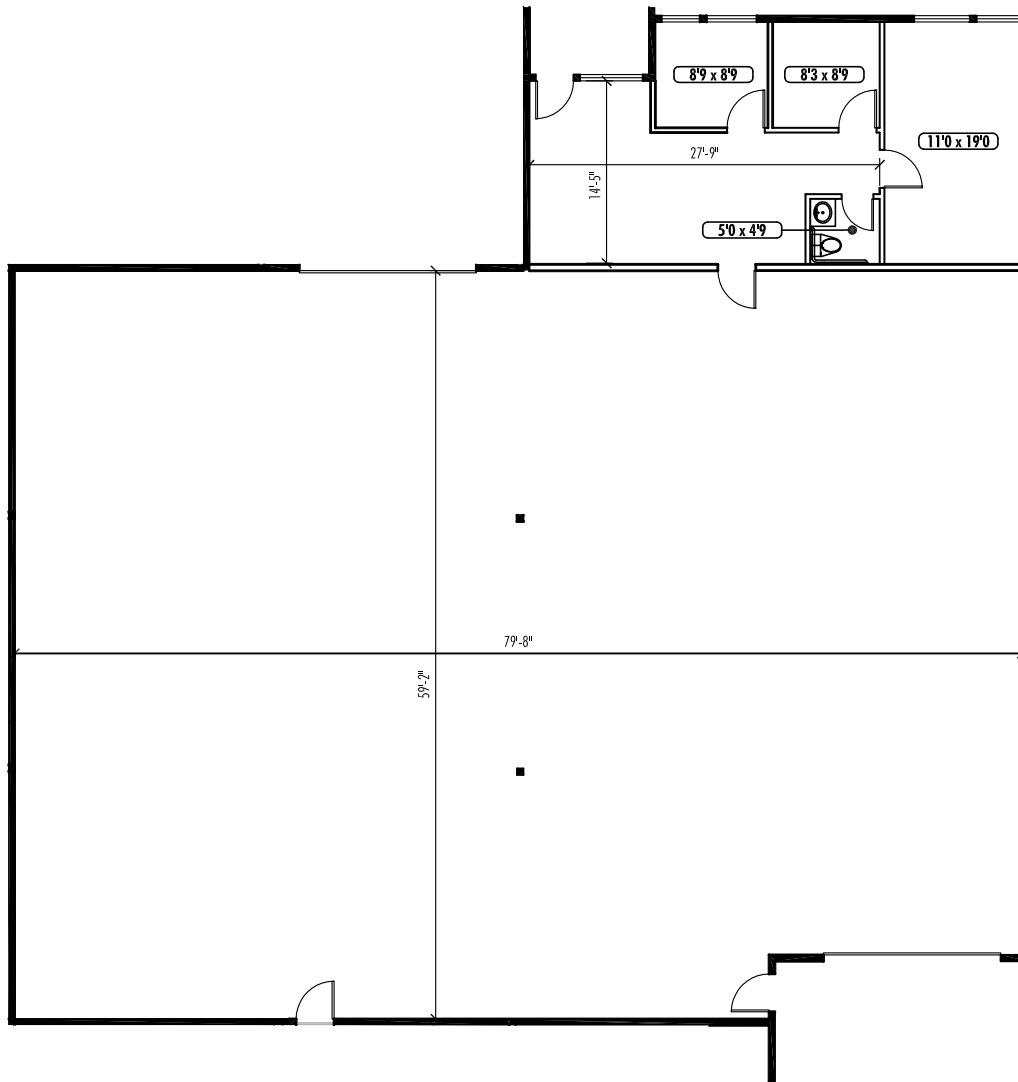
**JOHN DEHAN**  
253.779.2433  
jdehan@neilwalter.com

All information references in this document are approximate. The information contained herein is contained from sources deemed reliable. It is provided without representation, warranty, or guarantee, expressed or implied as to accuracy. Prospective buyer or tenant should conduct its own independent investigation relating to the property, government codes and regulations, allowed uses, and all other matters, regardless of whether they are referred to or contained in this document.

# LAKEWOOD BUSINESS PARK

Building A 10107, Building C 10109, Building D 10111, Building E 10029, Building G 10027, Building H 10025, South Tacoma Way  
Lakewood, WA

## D5 - 6,136 SF



**NICK RATZKE, SIOR**  
253.779.2414  
nratzke@neilwalter.com

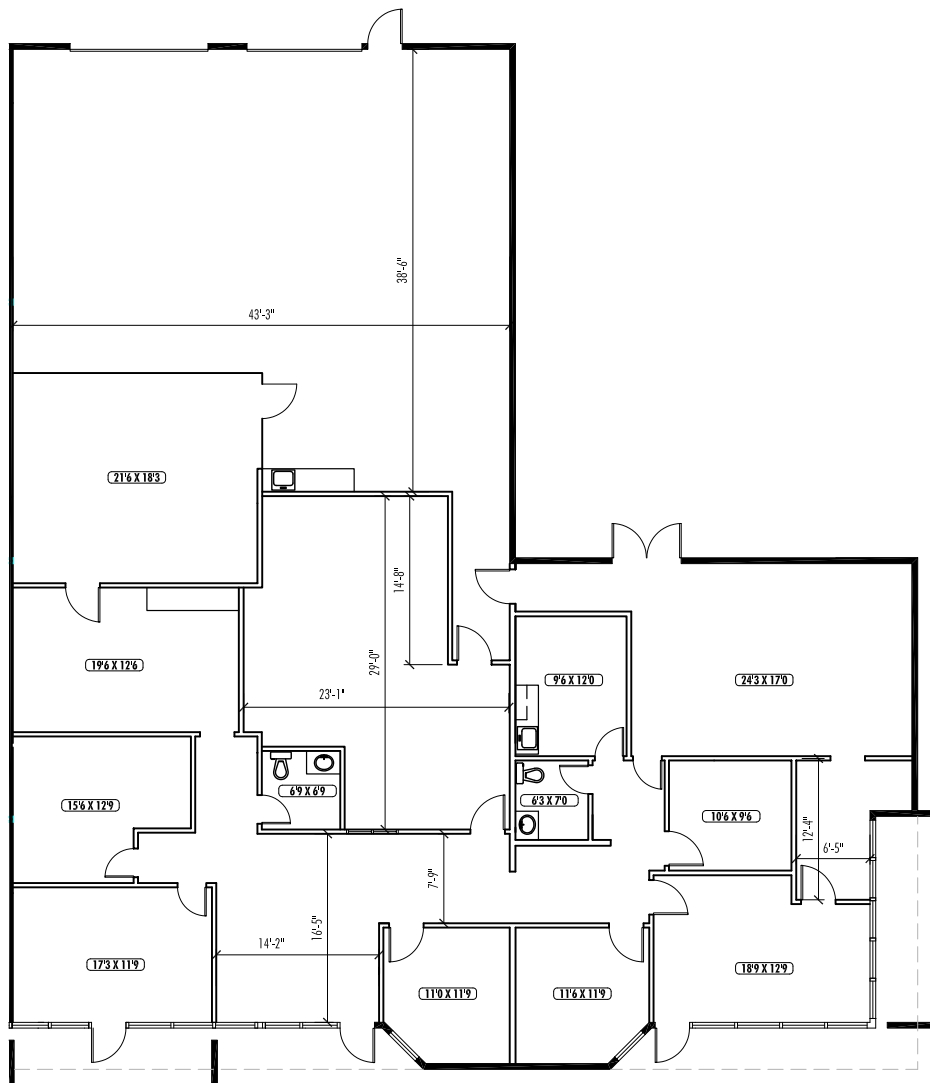
**JOHN DEHAN**  
253.779.2433  
jdehan@neilwalter.com

All information references in this document are approximate. The information contained herein is contained from sources deemed reliable. It is provided without representation, warranty, or guarantee, expressed or implied as to accuracy. Prospective buyer or tenant should conduct its own independent investigation relating to the property, government codes and regulations, allowed uses, and all other matters, regardless of whether they are referred to or contained in this document.

# LAKEWOOD BUSINESS PARK

Building A 10107, Building C 10109, Building D 10111, Building E 10029, Building G 10027, Building H 10025, South Tacoma Way  
Lakewood, WA

## H9 - 5,511 SF



**NICK RATZKE, SIOR**  
253.779.2414  
nratzke@neilwalter.com

**JOHN DEHAN**  
253.779.2433  
jdehan@neilwalter.com

All information references in this document are approximate. The information contained herein is contained from sources deemed reliable. It is provided without representation, warranty, or guarantee, expressed or implied as to accuracy. Prospective buyer or tenant should conduct its own independent investigation relating to the property, government codes and regulations, allowed uses, and all other matters, regardless of whether they are referred to or contained in this document.



# LAKEWOOD BUSINESS PARK

Building A 10107, Building C 10109, Building D 10111, Building E 10029, Building G 10027, Building H 10025, South Tacoma Way  
Lakewood, WA



**NICK RATZKE, SIOR**  
253.779.2414  
nratzke@neilwalter.com

**JOHN DEHAN**  
253.779.2433  
jdehan@neilwalter.com

All information references in this document are approximate. The information contained herein is contained from sources deemed reliable. It is provided without representation, warranty, or guarantee, expressed or implied as to accuracy. Prospective buyer or tenant should conduct its own independent investigation relating to the property, government codes and regulations, allowed uses, and all other matters, regardless of whether they are referred to or contained in this document.