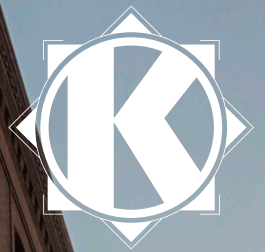


# FOR LEASE



**KNAPP**  
PROPERTIES

# Market One

## 130 EAST 3<sup>RD</sup> STREET

Des Moines, Iowa 50309

**Office Space Available**  
from 1,100 - 11,093 RSF

**ANGIE TESSAU, CCIM, SIOR**  
515.707.6889  
AngieT@KnappLC.com  
Licensed in IA

**KOREY BIRKENHOLTZ**  
515.480.6596  
Korey@KnappLC.com  
Licensed in IA



## BUILDING HIGHLIGHTS

- Platinum LEED certified building
- Rooftop patio + bar
- Shared conference space
- Parking available
- Solar panels on roof
- Great capitol views
- Beautiful architecture
- Shared restrooms with showers and mother's room on every floor
- Bike rack in basement



CLASS A



OFFICE SPACE



INVESTMENT



MANAGED BY KNAPP PROPERTIES



SUSTAINABLE PRACTICES



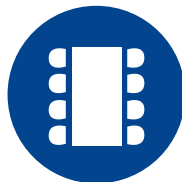
ROOFTOP



RENOVATED



PARKING LOT



SHARED CONFERENCE SPACE



RESTAURANTS NEARBY



RETAIL SHOPPING NEARBY

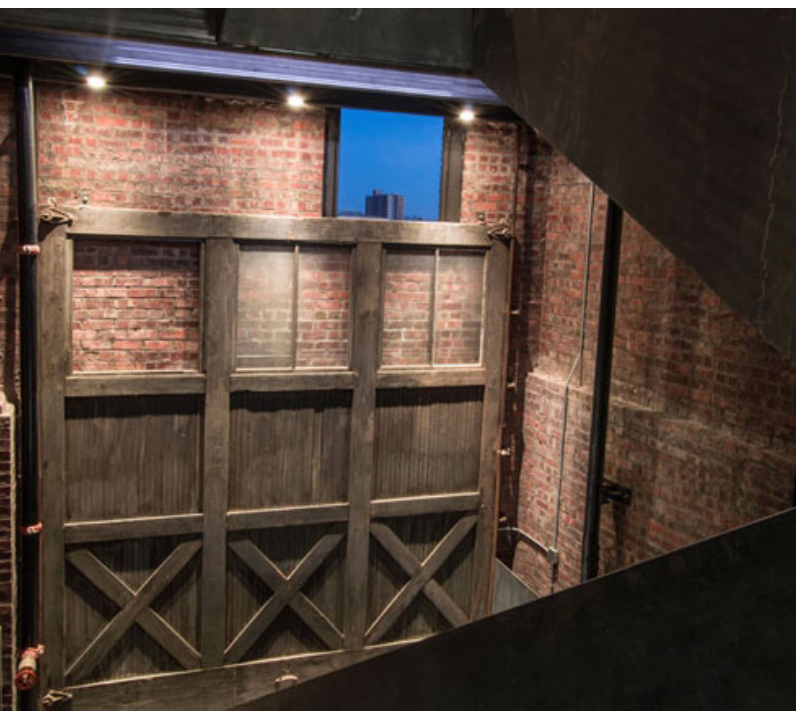
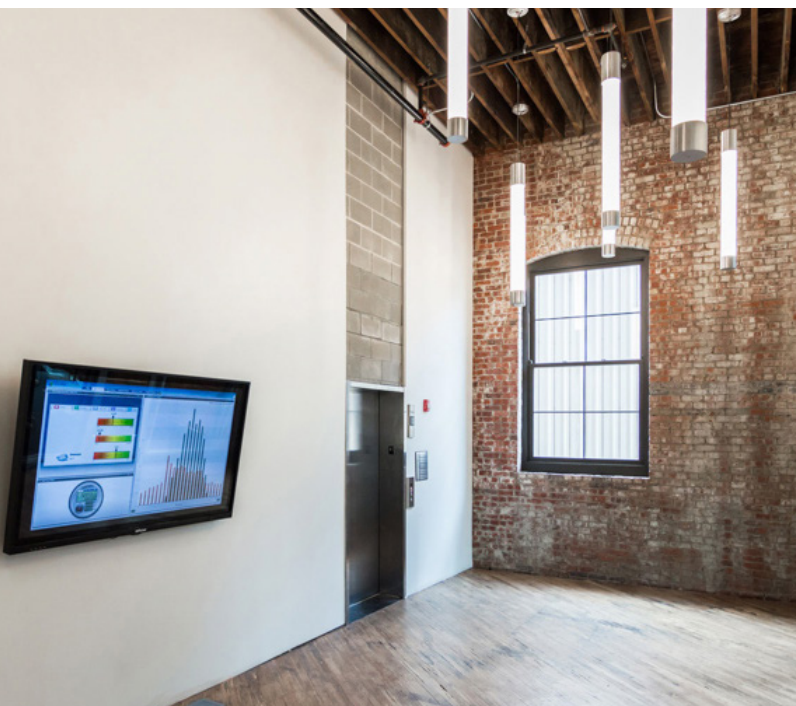


COFFEE SHOP NEARBY

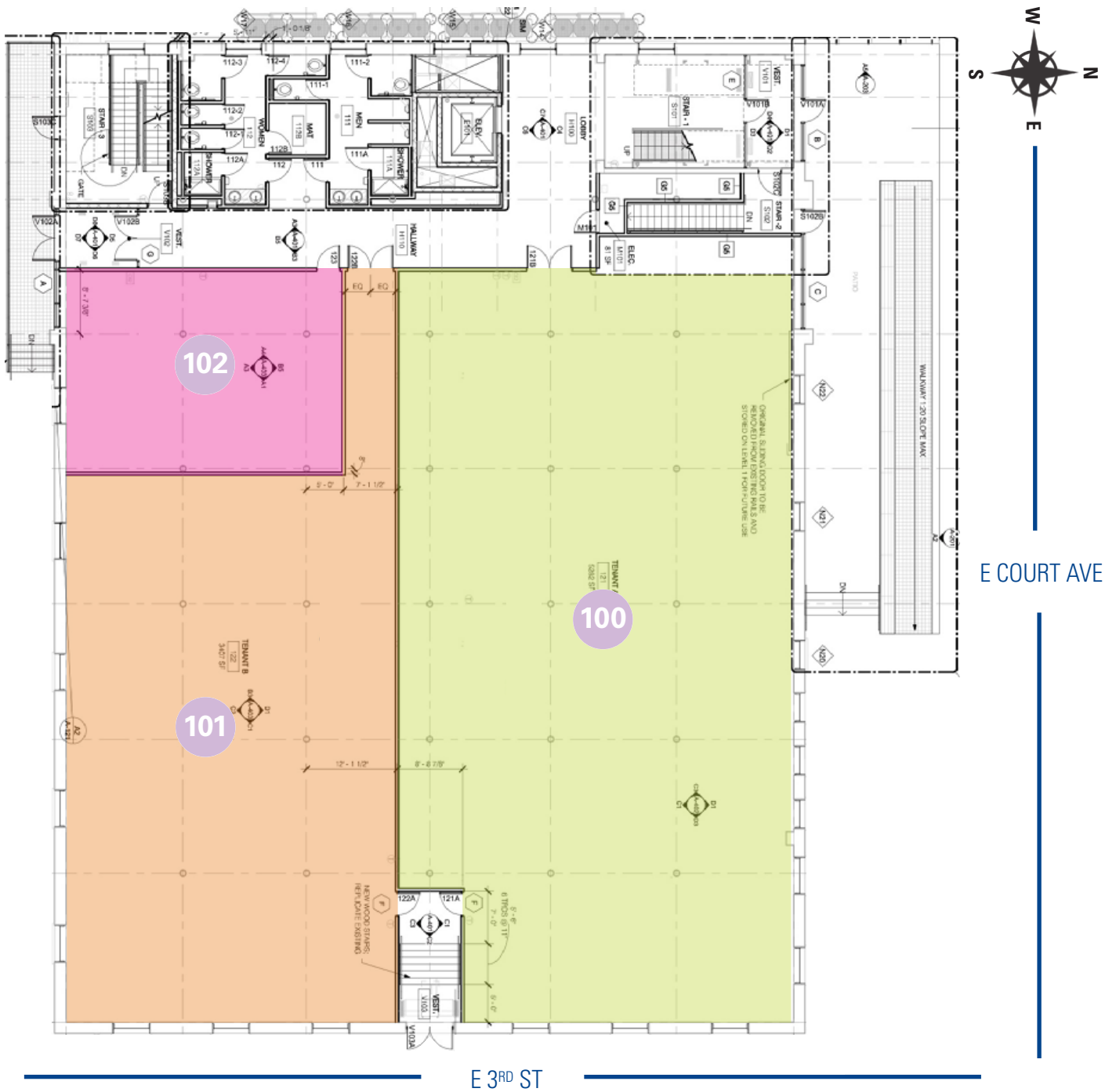


HOTEL NEARBY









## OFFICE SPACE

**SUITE 100** 5,500 RSF (approx.)

**SUITE 101** 4,493 RSF (approx.)

**SUITE 102** 1,100 RSF (approx.)

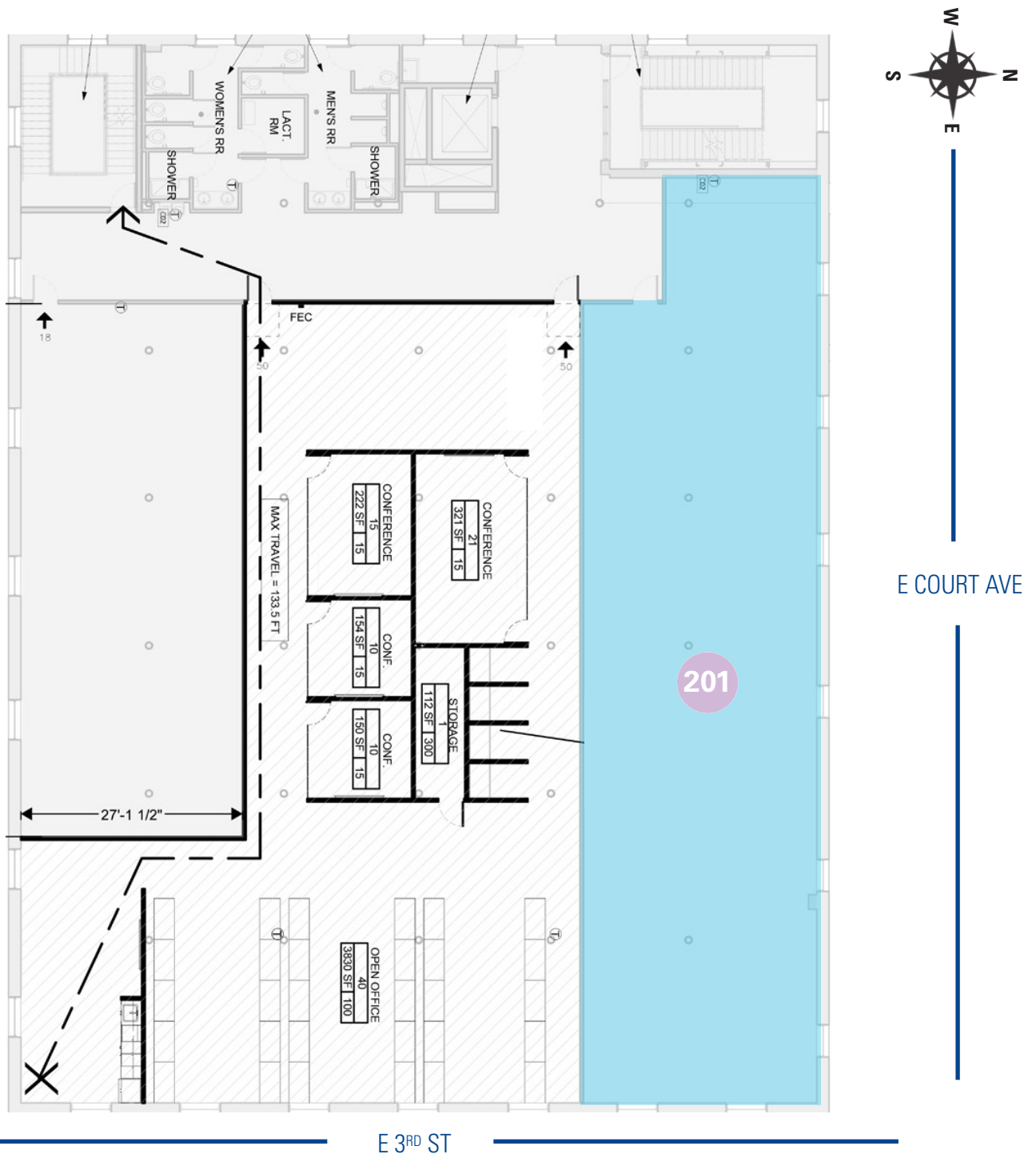
Total Contiguous 11,093 RSF

Lease Rate: \$16.50 PSF NNN

**ANGIE TESSAU**, CCIM, SIOR  
515.707.6889  
AngieT@KnappLC.com

**KOREY BIRKENHOLTZ**  
515.480.6596  
Korey@KnappLC.com





**OFFICE SPACE**

**SUITE 201** 3,000 RSF (approx.)

Lease Rate: \$16.50 PSF NNN

**ANGIE TESSAU**, CCIM, SIOR  
515.707.6889  
AngieT@KnappLC.com

**KOREY BIRKENHOLTZ**  
515.480.6596  
Korey@KnappLC.com



# DEMOGRAPHICS

## 130 EAST 3<sup>RD</sup> STREET

5 mile radius

### INCOME



\$58,882

Median Household Income



\$99,109

Median Net Worth



\$184,386

Median Home Value



\$51,419

Median Disposable Income

### EDUCATION



30%

Bachelor's/Grad/Prof Degree

### BUSINESS



7,625

Total Businesses



162,967

Total Employees

### KEY FACTS



211,853

Population



255,406

Total Daytime Population



36.2

Median Age



87,499

Households

### TRAFFIC



5,200

East 3rd Street

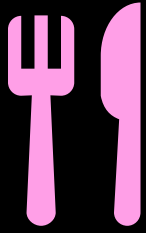
### EMPLOYMENT



3.0%

Unemployment Rate

# *nearby* ATTRACTIONS



410

Restaurants



66

Bars and  
Pubs



30

Coffee  
Shops



49

Grocers



71

C-Stores



124

Retail  
Shopping



49

Hotels



70

Attractions/  
Entertainment

## Average Annual Spend per Household on Eating Out



\$292

Breakfast



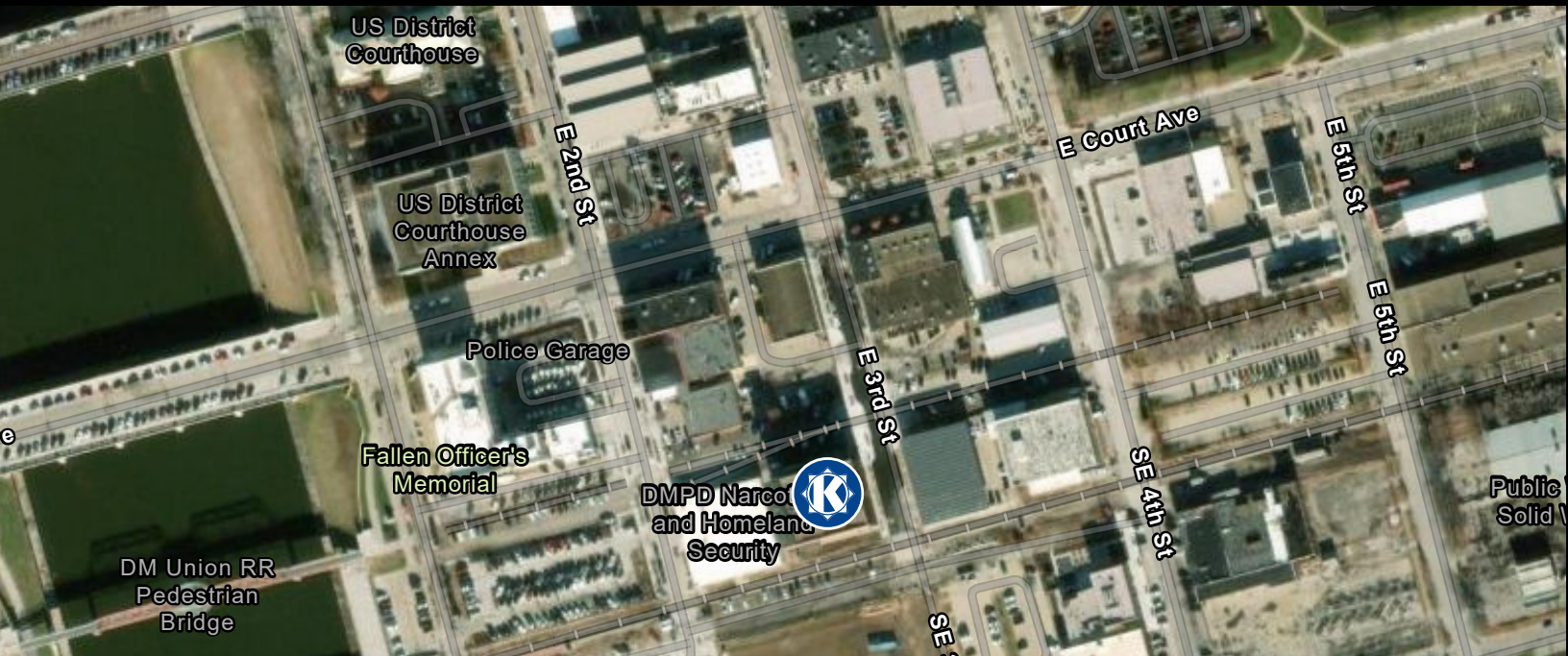
\$862

Lunch



\$1,448

Dinner







# FOR LEASE **130 EAST 3<sup>RD</sup> STREET**

**Des Moines, Iowa 50309**



**ANGIE TESSAU, CCIM, SIOR**

515.707.6889

[AngieT@KnappLC.com](mailto:AngieT@KnappLC.com)



**KOREY BIRKENHOLTZ**

515.480.6596

[Korey@KnappLC.com](mailto:Korey@KnappLC.com)

All interested parties acknowledge that neither Seller nor any of Seller's officers or directors, nor Seller's employees, agents, representatives, or any other person or entity acting on behalf of Seller (hereafter, such persons and entities are individually and collectively referred to as the "Seller"), have made any representations, warranties or agreements (express or implied) by or on behalf of Seller as to any matters concerning the Property, the economic results to be obtained or predicted, or the present use thereof or the suitability for the possible intended use of the Property. Any documents furnished by Seller relating to the Property shall be deemed furnished as a courtesy to any interested party but without warranty or representation from Seller. All work done in connection with preparing the Property for the uses intended by any interested party shall be obtained and paid for by, and shall be the sole responsibility of the interested party. All investigations of proposed governmental laws and regulations, including land use laws and regulations to which the Property may be subject, shall be based on the review and determination of the applicability and effect of such laws and regulations by the interested party. Seller makes no representations concerning such laws and regulations.