



Harper Land - Fitzgerald, GA

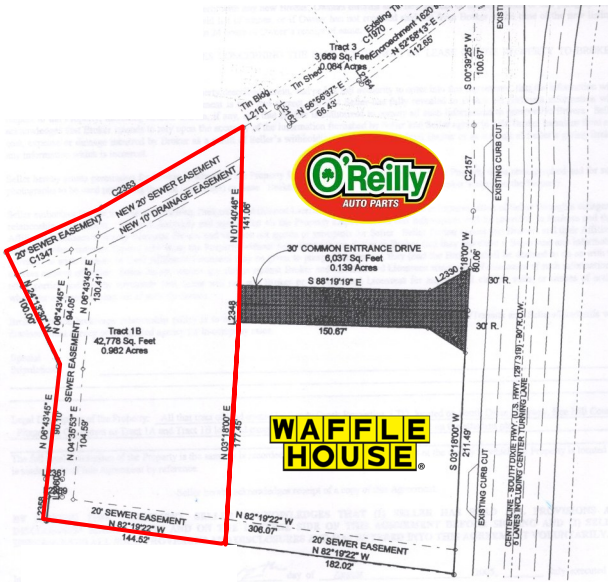
Ocilla Highway
Fitzgerald, GA 31750

(Latitude, Longitude)
(31.70566, -83.25308)

AVAILABLE:

0.982 acres at \$89,000.00

- Located with O'Reilly Auto Parts and Waffle House
- Existing shared paved curb cut with O'Reillys and Waffle House



DEMOGRAPHICS:

	10 miles	20 miles
2025 Population:	22,490	44,020
2025 Households:	9,276	17,860
2025 Median HH Income:	\$43,190	50,533

TRAFFIC COUNTS:

Street:	Daily Count
Ocilla Highway:	11,700

Please contact our office for additional information.

The Temples Company
PO Box 405
301 Mosley Street (30474)
Vidalia, GA 30475
(912) 538-7000
www.thetemplescompany.com