



Office / Warehouse Building

22027 - 22043 Industrial Blvd.

Rogers, MN 55374

FOR LEASE
3,915 SF & 5,600 SF OFFICE / WAREHOUSE



FEATURES:

- 3,915 SF & 5,600 SF office / warehouse available - For Lease in Rogers, MN.
- Great opportunity for any small company!
- Convenient location on Industrial Blvd with easy access to I-94
- Heavy Power Available with 16' clear height.

Gross Lease Rates:

SUITE 22043: \$3,735 / mo.

SUITE 22027: \$5,100 / mo.

| | |
|---------------------|-----|
| Overview | 1 |
| Aerial Maps | 2 |
| Floor Plan | 3 |
| Photo Gallery | 4-5 |



Suite Options

SUITE 22043- SUITE 1

- * 3,915 SF Available (1,317 SF Office / 2,598 SF Warehouse)
- * (1) 12' x 14' Drive-In Door

SUITE 22027 - Suite 3 & 3A

- * 5,600 SF Available (1,200 SF Office / 4,400 SF Warehouse)
- * (1) 10' x 12' Drive in door)



Chad Weeks
612.619.9911
cweeks@arrowcos.com



Steve Fischer
612.619.9991
sfischer@arrowcos.com

Contact

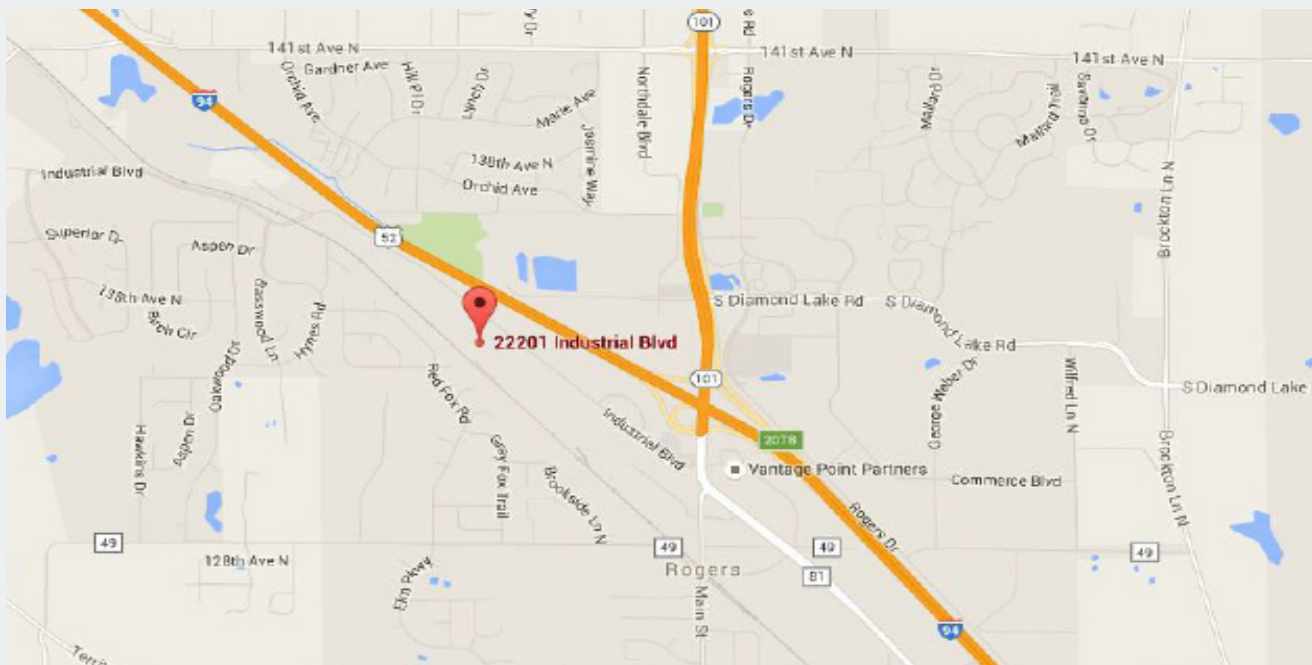
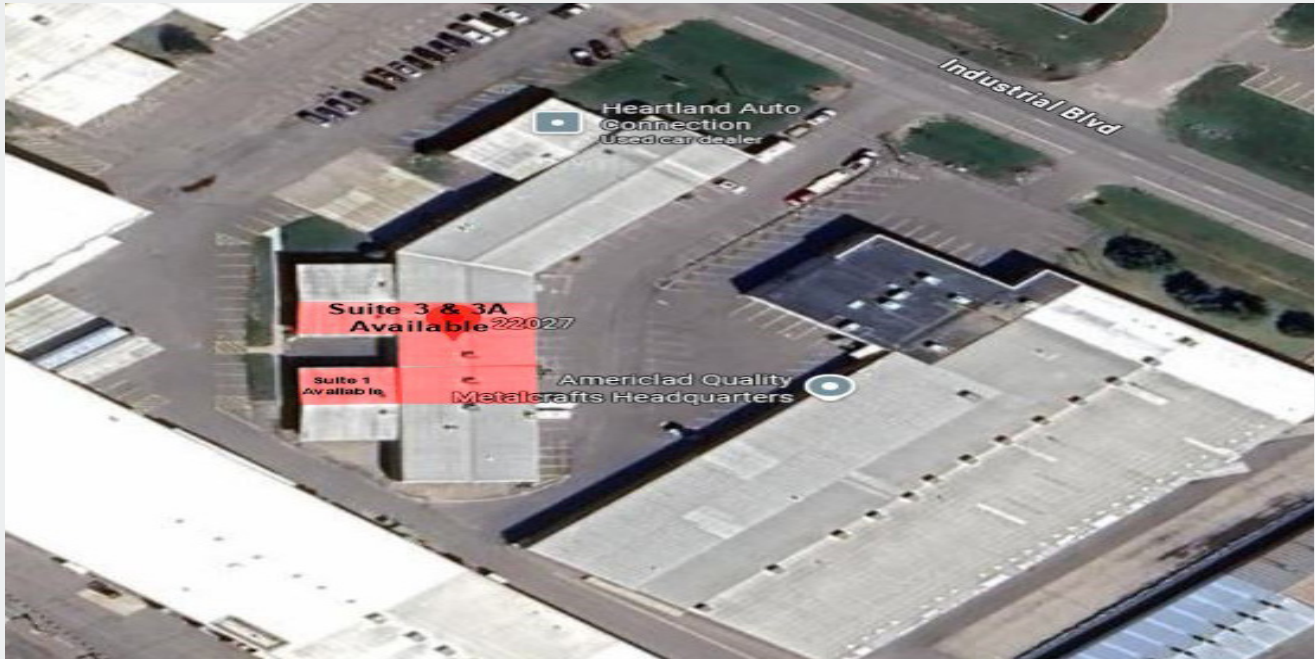
Phone: 763.424.6355
Fax: 763.424.7980

Arrow Companies
7365 Kirkwood Court N. Suite 335
Maple Grove, MN 55369

www.arrowcos.com

AERIAL & MAP

FOR LEASE
3,915 SF & 5,600 SF OFFICE / WAREHOUSE



Contact

Phone: 763.424.6355

Fax: 763.424.7980

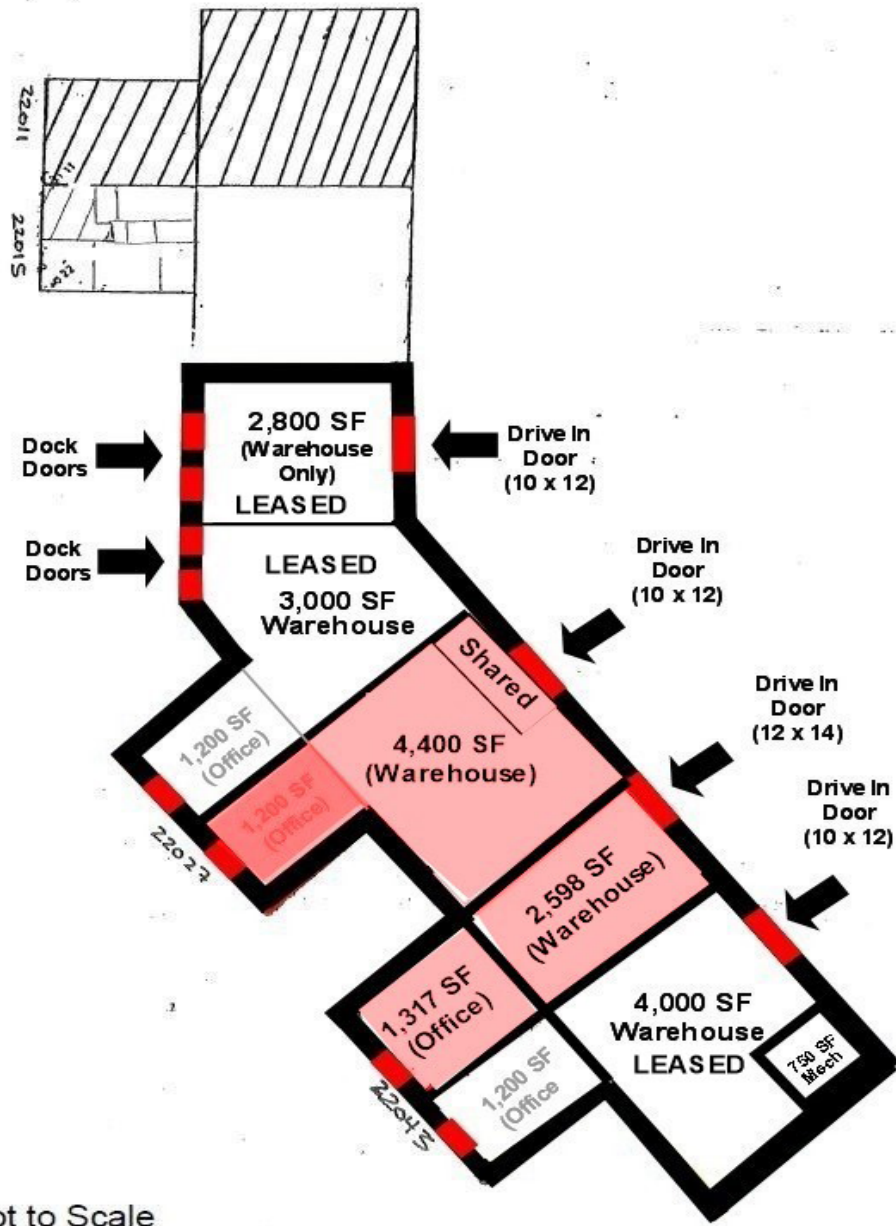
Arrow Companies

7365 Kirkwood Court N. Suite 335

Maple Grove, MN 55369

FLOOR PLAN

FOR LEASE
3,915 SF & 5,600 SF OFFICE / WAREHOUSE





Office / Warehouse Building

22027 - 22043 Industrial Blvd.

Rogers, MN 55374

PHOTO GALLERY
22027 SUITE 3 & 3A

FOR LEASE
3,915 SF & 5,600 SF OFFICE / WAREHOUSE



Contact

Phone: 763.424.6355

Fax: 763.424.7980

Arrow Companies

7365 Kirkwood Court N. Suite 335

Maple Grove, MN 55369

www.arrowcos.com



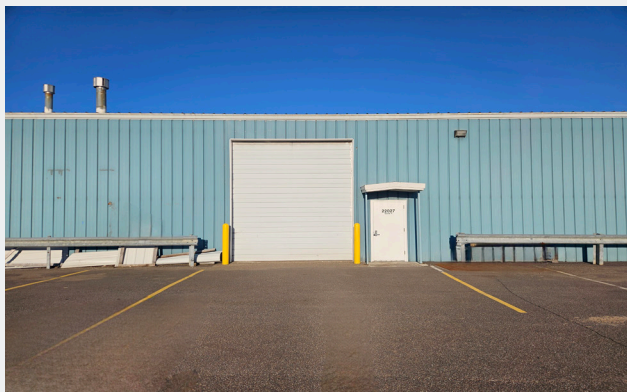
Office / Warehouse Building

22027 - 22043 Industrial Blvd.

Rogers, MN 55374

PHOTO GALLERY SUITE 22043

FOR LEASE
3,915 SF & 5,600 SF OFFICE / WAREHOUSE



Contact

Phone: 763.424.6355

Fax: 763.424.7980

Arrow Companies

7365 Kirkwood Court N. Suite 335

Maple Grove, MN 55369

www.arrowcos.com