



NEC Fourteen Mile & Decker

Walled Lake, MI

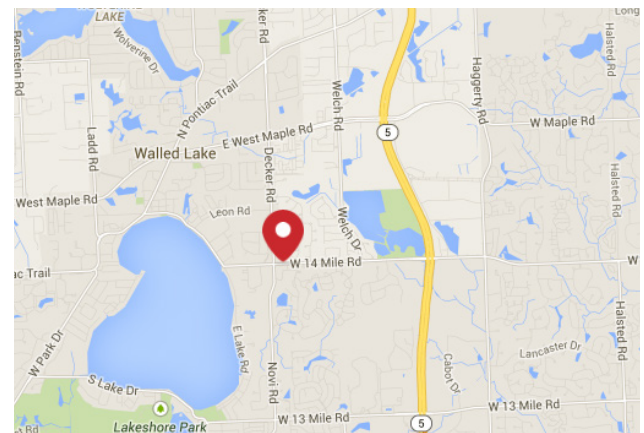
- 2.48 Acre Hard Corner Parcels 1A and 1B Asking Price of \$960,000.00
- 9.76 Acre Balance of Corner Parcels 2A and 2B Asking Price \$1,500,000.00
- Zoning: use governed by a consent judgment allowing for principal uses permitted in the B-2 Community Business Zoning District as set forth in the zoning ordinance in the Charter Township of Commerce

For more information, contact:

Ron Goldstone

248 351 4371

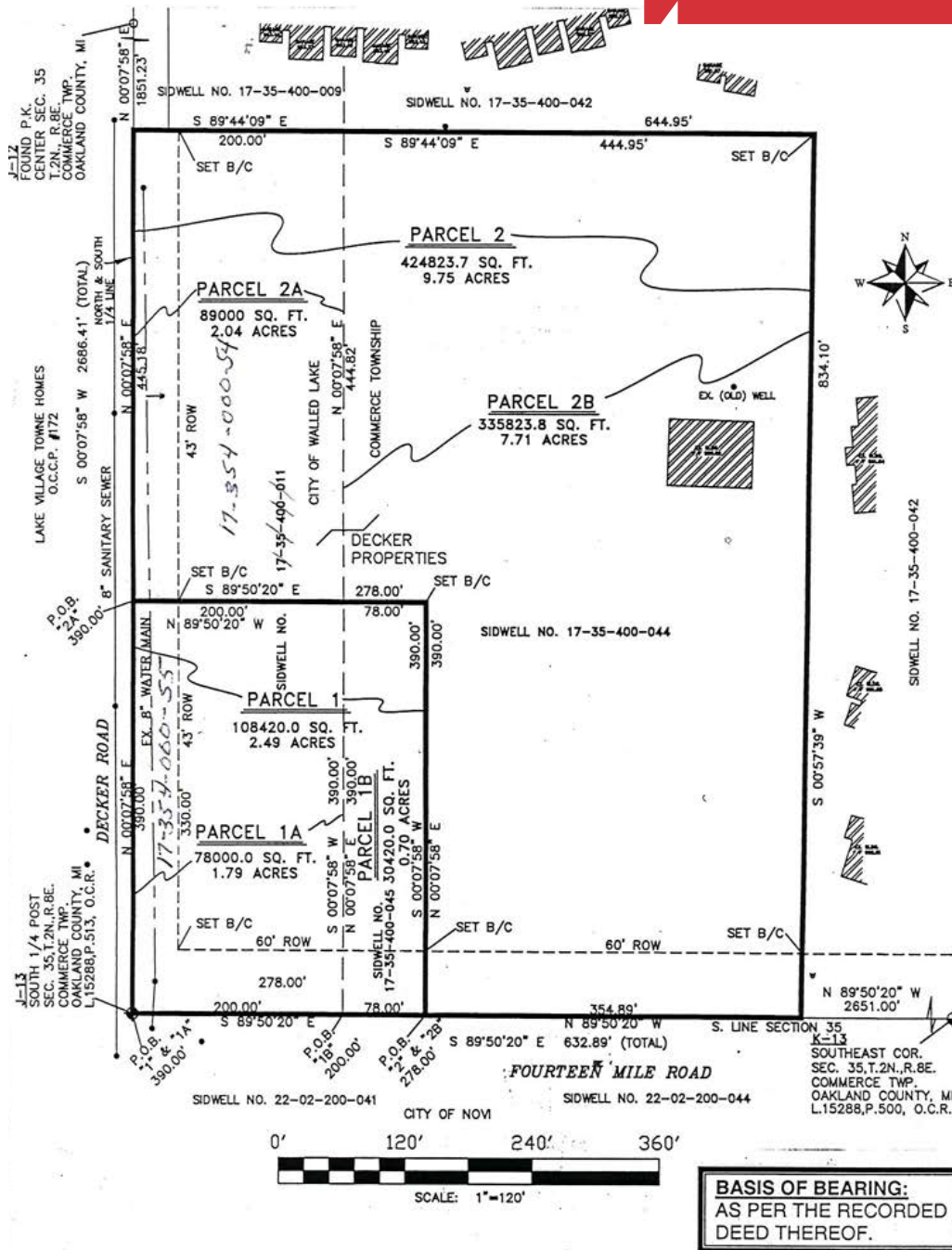
goldstone@farbman.com



DEMOGRAPHICS		
STATS	POPULATION	AVG. INCOME
3 MILE	56,485	\$86,042
5 MILE	147,306	\$96,669
7 MILE	263,444	\$100,368

DAILY TRAFFIC COUNTS	
ROADS	DAILY TRAFFIC
14 MILE & M-5	23,000 DAILY
DECKER & 14 MILE	10,000 DAILY

The information contained herein has been given to us by the owner of the property or other sources we deem reliable. We have no reason to doubt its accuracy, but we do not guarantee it. All information should be verified prior to lease or purchase.



2014 PROPERTY TAX INFORMATION

PARCEL ID	STATE EQUALIZED VALUE	TAXABLE VALUE	SUMMER TAXES	WINTER TAXES	TOTAL 2014 PROPERTY TAXES
17-35-400-055	\$247,580	\$17,850	\$1,016.15	\$31.65	
17-35-400-045	\$24,000	\$24,000	\$927.11	\$197.11	
17-35-400-054	\$250,810	\$20,340	\$1,203.75	\$36.05	
17-35-400-044	\$59,670.00	\$50,670.00	\$2,420.31	\$490.09	
TOTALS			\$5,567.32	\$754.90	\$6,322.22

Figures shown represent estimates