

# LAKE CORDOVA BUILDING

202 SOUTH LAKE AVENUE  
MID-CENTURY MODERN OFFICE SPACE FOR LEASE



PASADENA | CALIFORNIA

# FOR LEASE

## LAKE CORDOVA BUILDING

202 SOUTH LAKE AVENUE  
PASADENA, CALIFORNIA



## Highlights

**RENOVATED** mid-century modern building.

**CONVENIENT** lounge area on second floor.

**HEART OF SOUTH LAKE AVENUE DISTRICT** walking score of 97 with shopping, fine dining, and casual restaurants all steps away.

**CLOSE PROXIMITY** to CALTECH campus.

**COMPLIMENTARY** building Wi-Fi.

**PARKING** city controlled lot with ample parking behind building at prevailing rate.



For more Information, Contact

**DAN ALLE**

**JULIE ALLE**

(626) 483-6358

(626) 864-3927

[dalle@restonecre.com](mailto:dalle@restonecre.com)

[jalle@redstonecre.com](mailto:jalle@redstonecre.com)

Lic. # No. 01017941

Lic. # No. 01889085



# FOR LEASE

## LAKE CORDOVA BUILDING

202 SOUTH LAKE AVENUE  
PASADENA, CALIFORNIA



# FOR LEASE

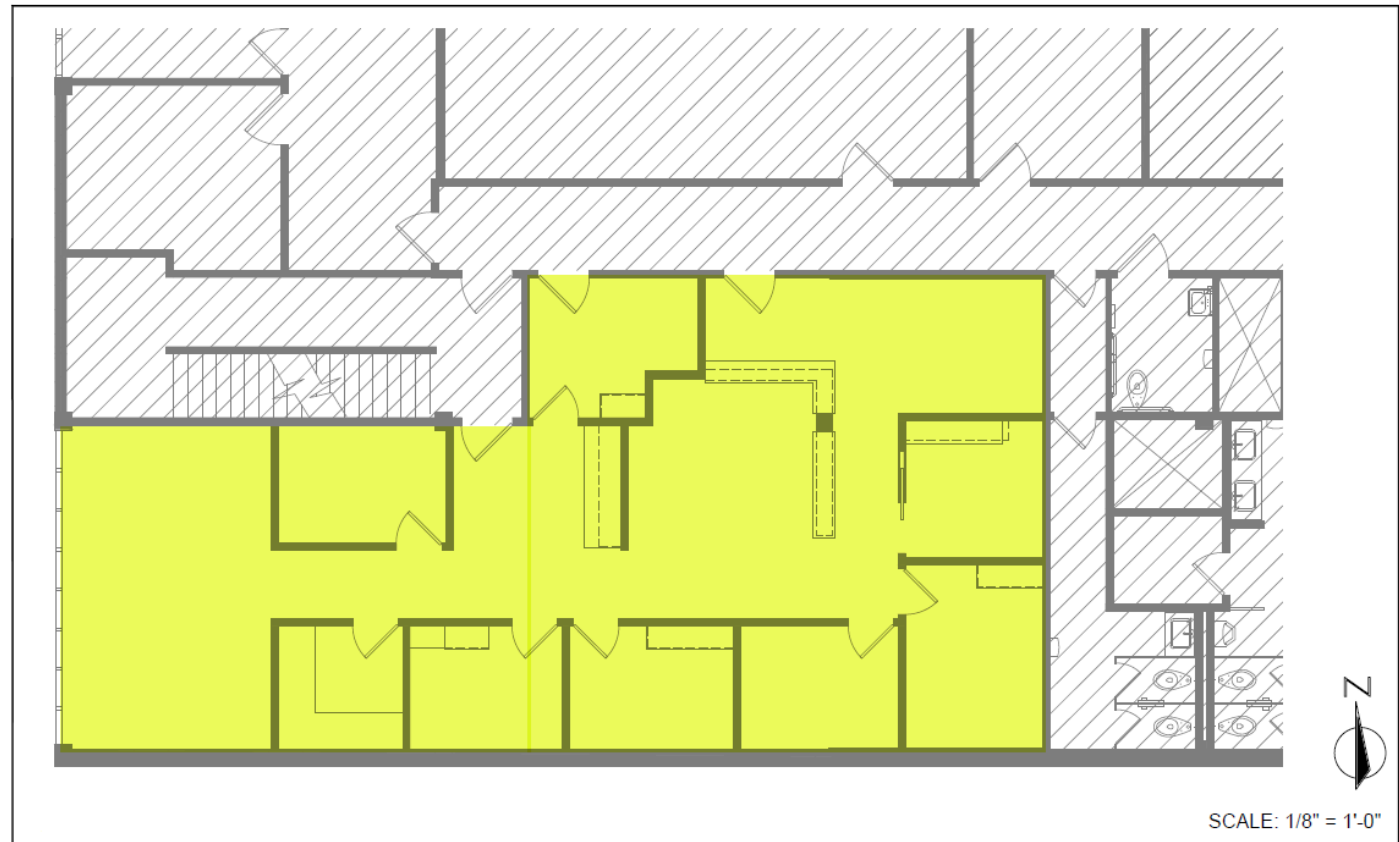
## LAKE CORDOVA BUILDING

202 SOUTH LAKE AVENUE  
PASADENA, CALIFORNIA

Suite 298

**\$3.25 PSF**  
RATE PER MONTH FSG

**Approx. 1,743 RSF**  
AVAILABLE FEBRUARY 28, 2025



**Redstone Commercial Real Estate**  
301 No. Lake Avenue, Suite 1000, Pasadena CA 91101  
Tel. (626) 795-2255 | Fax (626) 795-2251

