

**FULL FLOOR
6,987 SF**

NAI Commercial



2nd Floor - 1080 Howe Street | Vancouver, BC

FOR LEASE

Downtown Vancouver Executive Place Tower

Opportunity to lease 6,987 SF of fully-improved, premier office space in the heart of downtown Vancouver. Centrally situated at Howe and Helmcken, this building is within close proximity to public transportation, trendy restaurants and is within walking distance to all points on the downtown peninsula.



VANCOUVER
CITY CENTRE



COURTHOUSE

1080
HOWE

HOWE ST

HELMCKEN ST

GRANVILLE ST

2nd Floor - 1080 Howe Street Vancouver, BC

Highlights

- ▶ Fully-improved space
- ▶ Underground parking
- ▶ Gym, showers, kitchen and common boardroom
- ▶ Double glass door entry to the building
- ▶ Open area with lots of natural light

Amenities

- ▶ SkyTrain Stations: Vancouver City Centre, Granville, Burrard, Yaletown Roundhouse
- ▶ Area Amenities: Starbucks, Tim Hortons, Scotiabank Theatre, Marketplace IGA, Nesters, Le Crocodile, Staples, Holiday Inn, St. Paul's
- ▶ Building Amenities: Boardroom, gym, shower facilities, bike storage locker, common kitchen.

Brian Mackenzie

Vice President Leasing & Sales

604 691 6618 | bmackenzie@naicommercial.ca

Property Details

Size

6,987 SF

Base Rent

\$17.00/SF

Operating Cost and Taxes

\$22.00/SF (2024 estimate)

Parking

Excellent parking is available at market rates

Availability

Immediate

NAICommercial

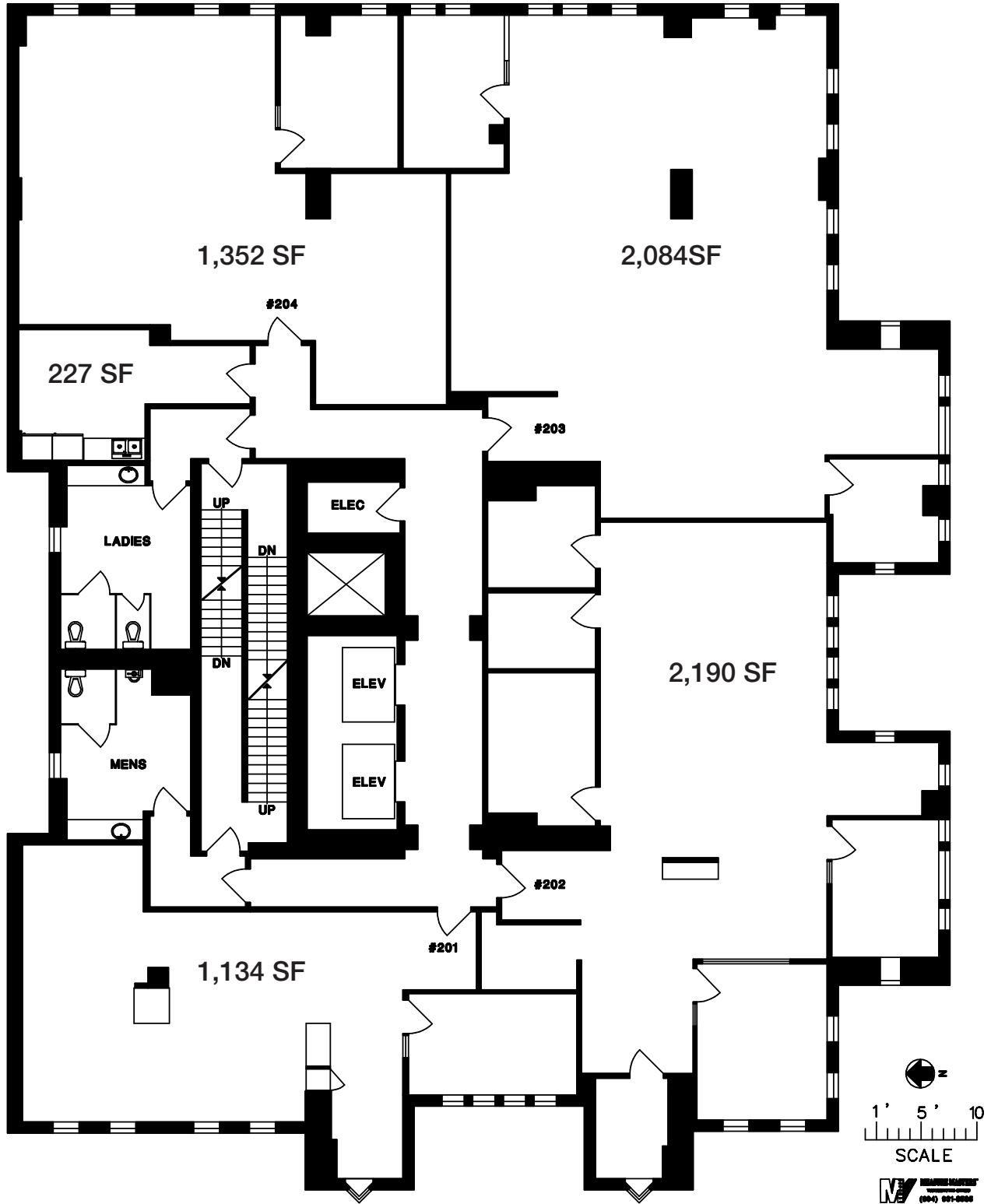
1300 - 1075 W Georgia St, Vancouver, BC V6E 3C9

+1 604 683 7535 | naicommercial.ca

No warranty or representation, express or implied, is made as to the accuracy of the information contained herein, and the same is submitted subject to errors, omissions, change of price, rental or other conditions, prior sale, lease or financing, or withdrawal without notice, and of any special listing conditions imposed by our principals no warranties or representations are made as to the condition of the property or any hazards contained therein are any to be implied. Aerial image(s) courtesy of Google, Landsat/Copernicus

**1080 HOWE ST.,
VANCOUVER, B.C.**

SECOND FLOOR



TOTAL RENTABLE AREA 6,987 SF

