

*Nutting Engineers, Inc.*

CONSTRUCTION INSPECTION  
SOILS • CONCRETE • ASPHALT  
FOUNDATION STUDIES  
TEST METHODS • LIQUID LIMIT

TESTING AND CONSULTING ENGINEERS

5680 NORTHWEST SEVENTH STREET

*Miami, Florida 33126*

(305) 666-1897

ORDER NO. : V-1516

REPORT NO. :

DATE : 12-10-71

REPORT OF TESTS

CLIENT : Crown Trading Company  
PROJECT : Crown Trading Company  
LOCATION : N.W. 7 St. & 24 Ct.  
TEST DEPTH : 30"  
TEST LOCATION : As located by client - 30' S & 65' W of NE property corner  
WATER DEPTH : None encountered

PERCOLATION TEST

Time for water to drop 3" 2 minutes, 8 seconds

WATER DROP (INCHES)	MINUTE	TIME	SECONDS
15 - 14	0		40
14 - 13	0		50
13 - 12	1		12

Average: 0 minutes, 54 seconds

Soil Description:

0" - 6" Gray sand  
6" - 30" Reddish sand w/limerock fragments  
30" + Tan limestone

NUTTING ENGINEERS, INC.

*John M. Arribas, Jr.*  
John M. Arribas, Jr., P.E.

Soils Technician:

Gene Boram

73-2870

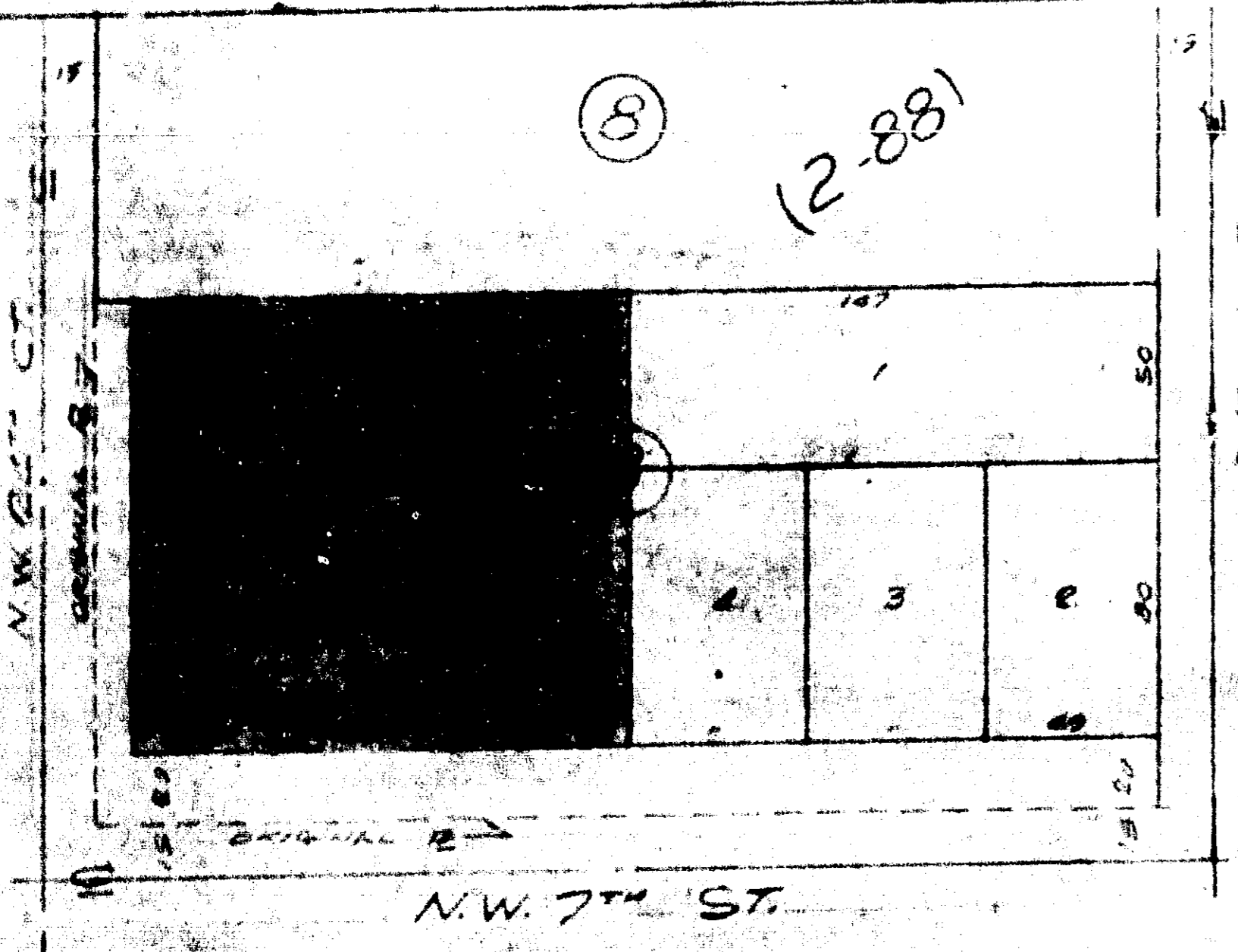
Handwritten notes, possibly bleed-through from the reverse side of the page. The text is mostly illegible due to blurring and low contrast, but some words like "PARTICIPATE" and "TYPICAL" are visible.

Handwritten scribble or signature.

Handwritten notes or a signature, partially obscured by the dark bar at the bottom.

13-2870

8  
(2-88)



LOCATION SKETCH SCALE: 1" = 50'

CITY OF MIAMI ZONING: (Lots 5, 6 & 7) C-2  
CITY OF MIAMI ZONING: (Lot 8) R-2

General Elevation 11 feet  
City of Miami Lotus Elevation

Verify All Zoning and Set Backs before  
proceeding with Plans or Construction,  
with Zoning Officials. We accept no  
responsibility.  
J. B. FORD CO.

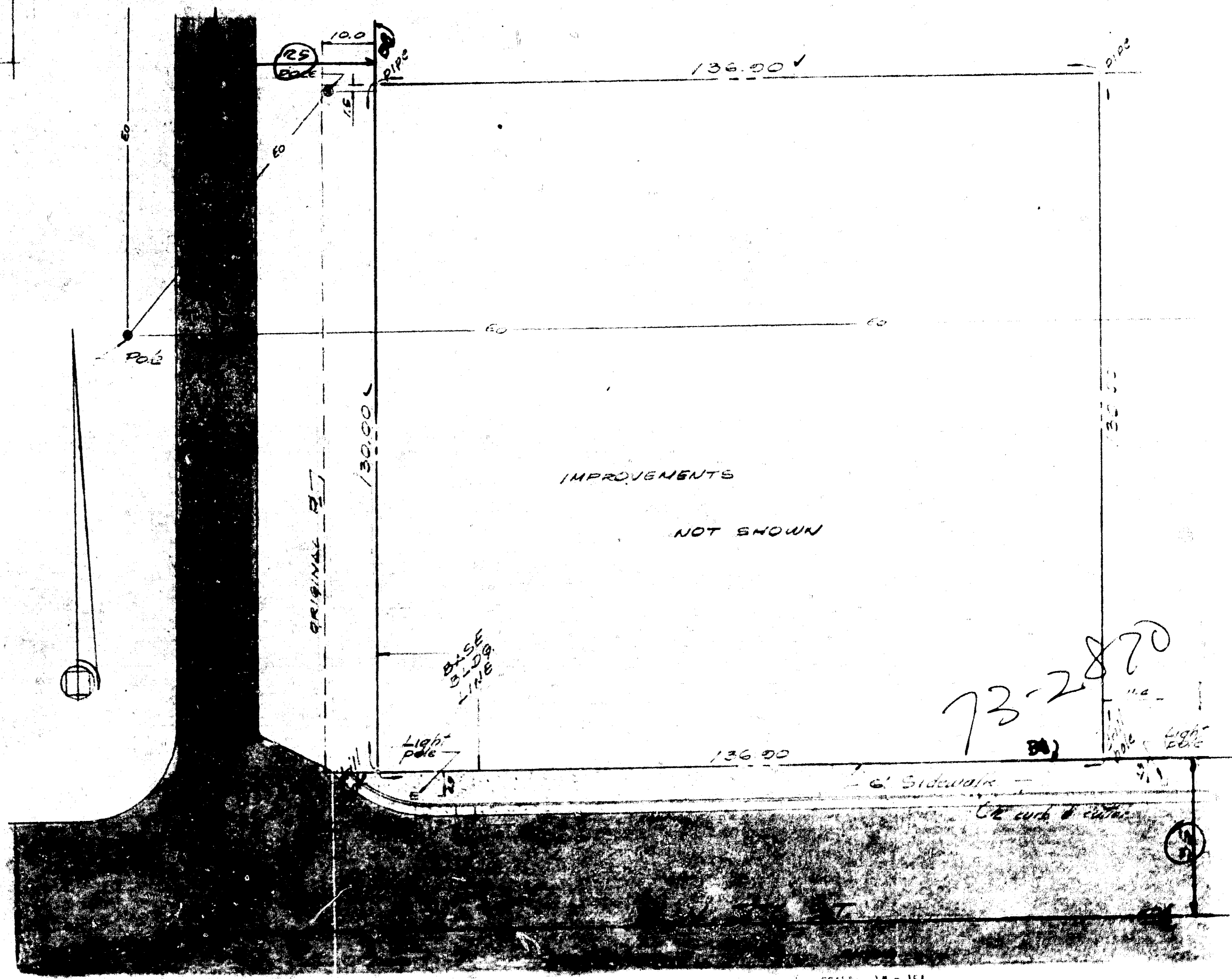
**SURVEY OF:**

Lots 5, 6, 7 & 8,  
Block 3,  
RIVERSIDE PARKS,  
According to the Plat thereof as recorded in Plat Book 3,  
at Page 88 of the Public Records of Dade County, Florida.  
Less the West 10 feet of Lots 7 & 8,  
Less the South 20 feet of Lots 5, 6 & 7.

I HEREBY CERTIFY that the information shown hereon represents a Survey made under  
my direction and is true and correct to the best of my knowledge and belief.  
J. B. FORD CO.

*C. W. Ladd*  
C. W. Ladd # 1230  
Registered Land Surveyor  
State of Florida

J. B. FORD CO.  
C. W. LADD, Pres.  
2009 N. W. 7th Street  
Miami, Fla. 33125  
Phone: 642-2870, 642-2731



SKETCH OF SURVEY

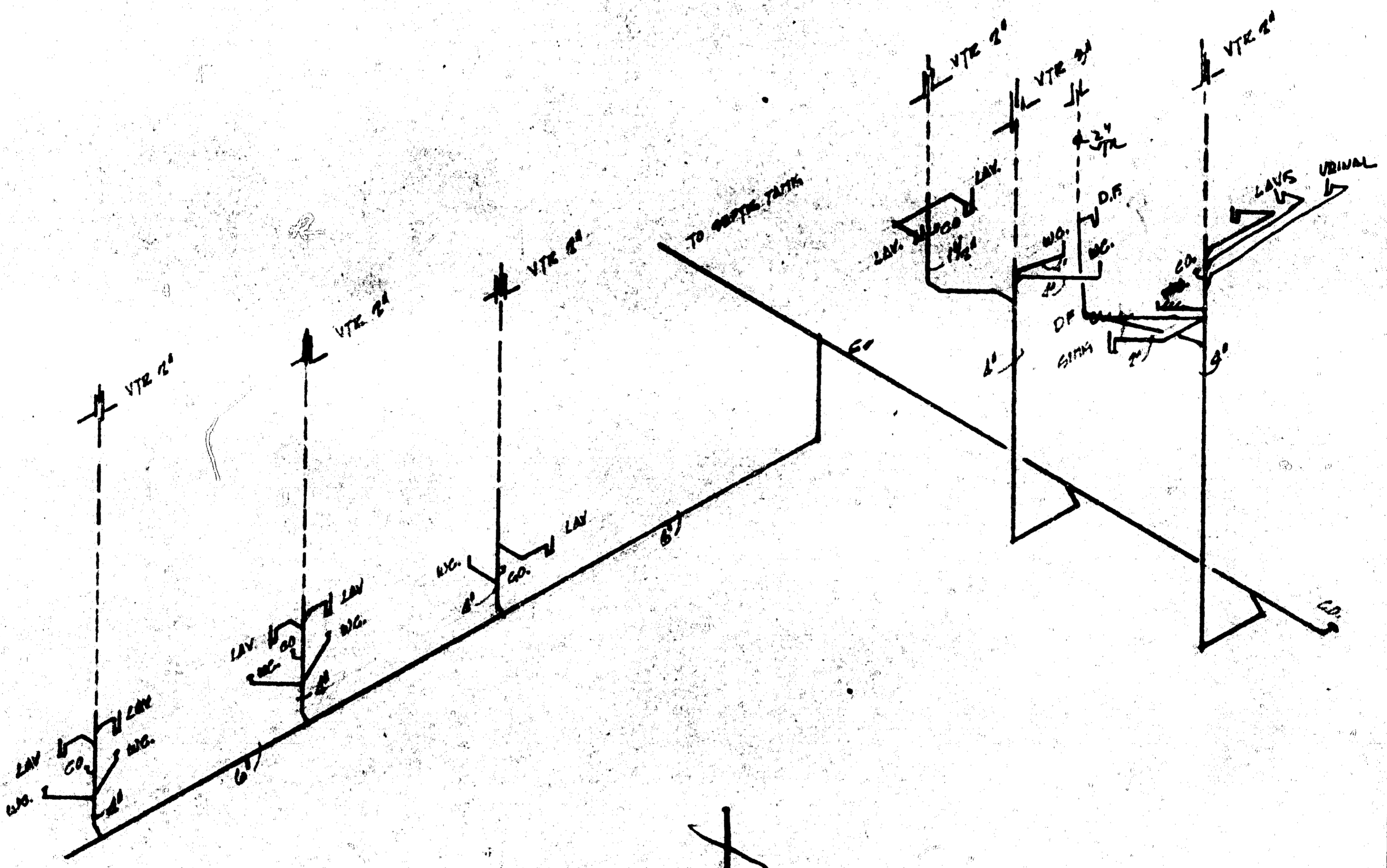
SCALE: 1" = 15'

FORM DRAWN DEPT STONES

DATE: July 9, 1971

F.B. 554-23

73-2870



~~PLUMBING WORK DIAGRAM~~

711

*X*  
*Asanyan*

SCALE	APPROVED BY	DRAWN BY
DATE		REVISED
		DRAWING NUMBER

73-2870

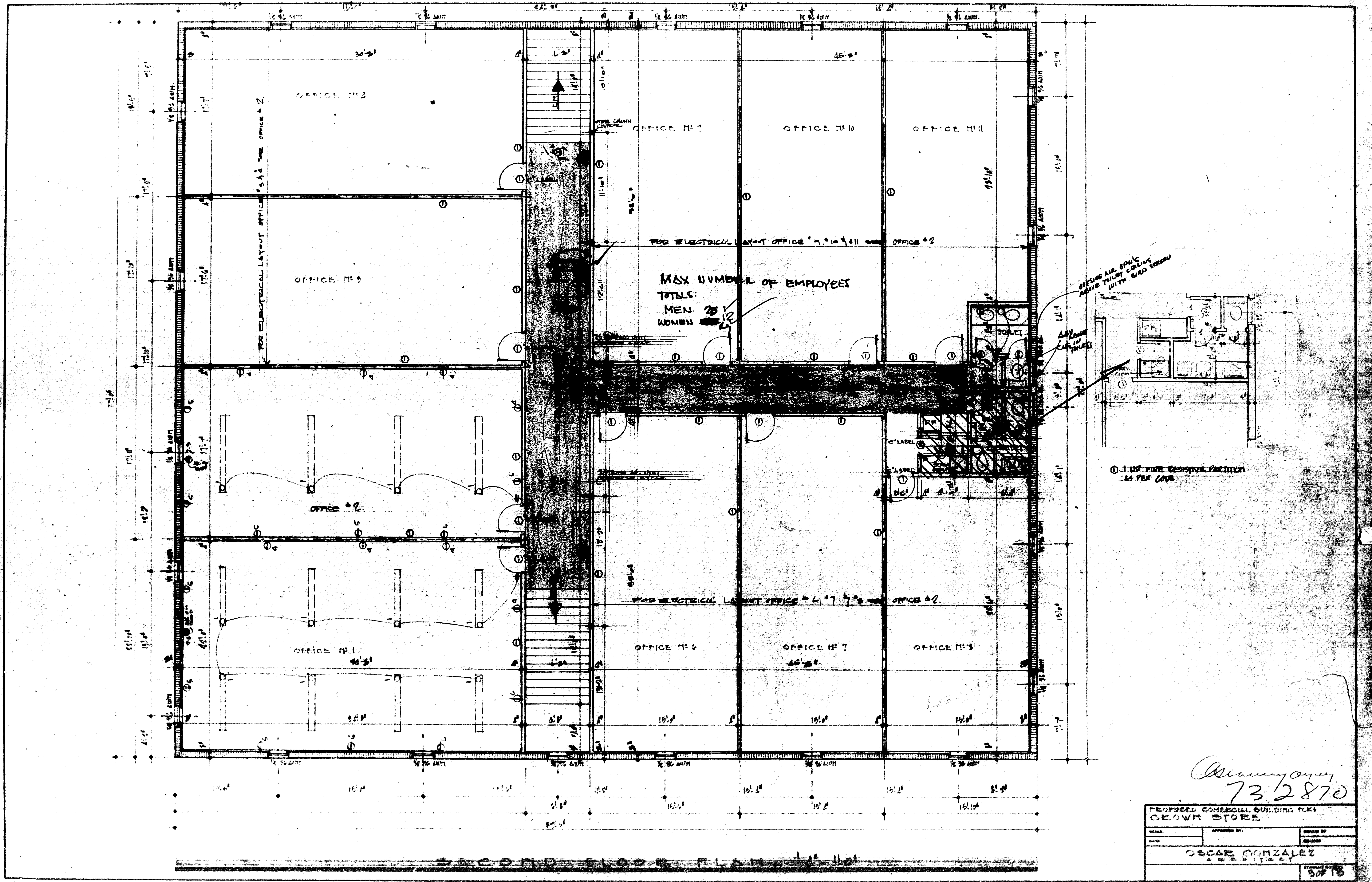








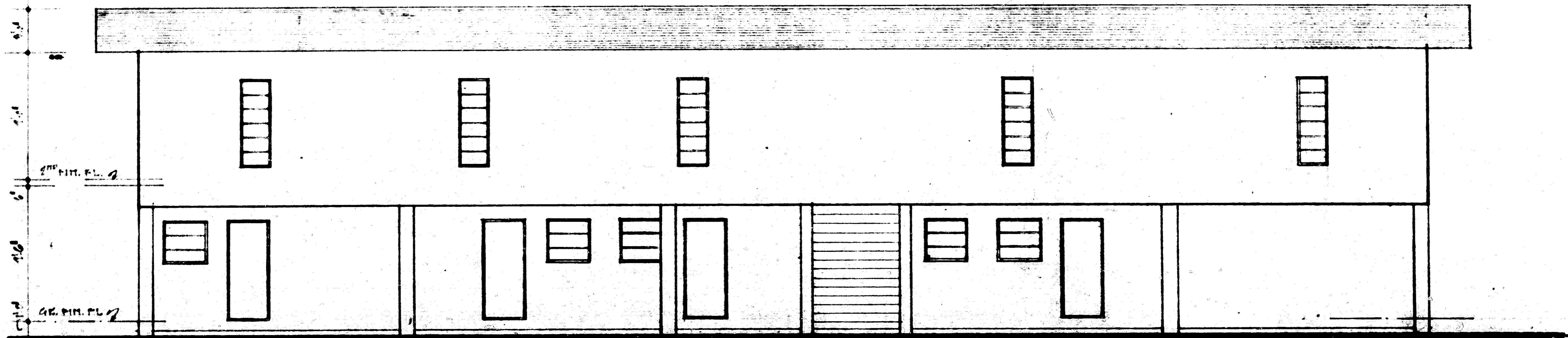




73-2870

*Oscar Gonzalez*  
732870

PROPOSED COMMERCIAL BUILDING FOR CROWN STORE		
SCALE	APPROVED BY	DRAWN BY
DATE		
OSCAR GONZALEZ		
		SHEET 13



REAR ELEVATION 1/4" = 1'-0"

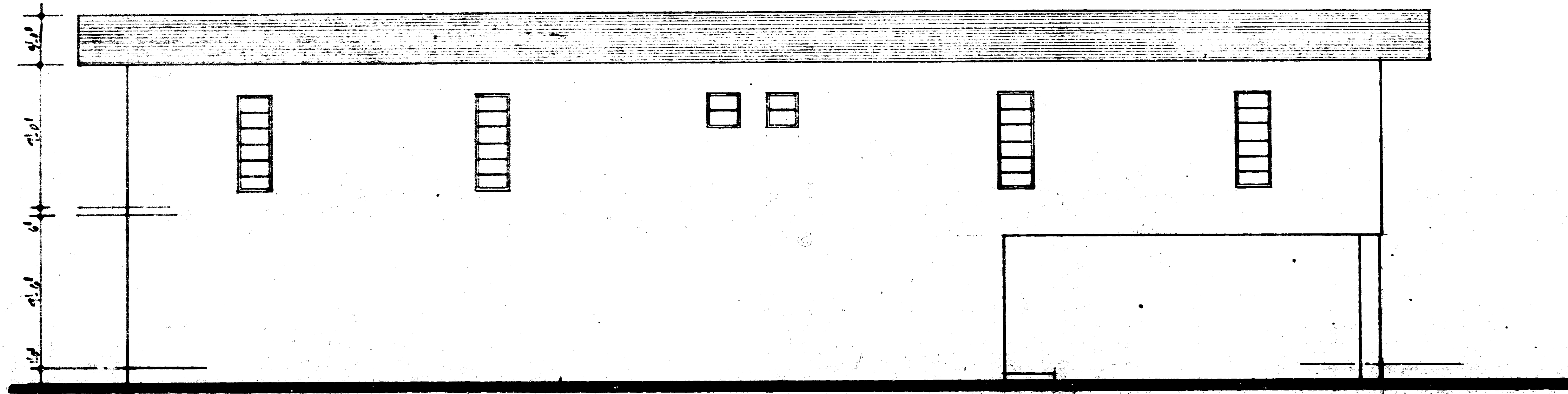


FRONT ELEVATION 1/4" = 1'-0"

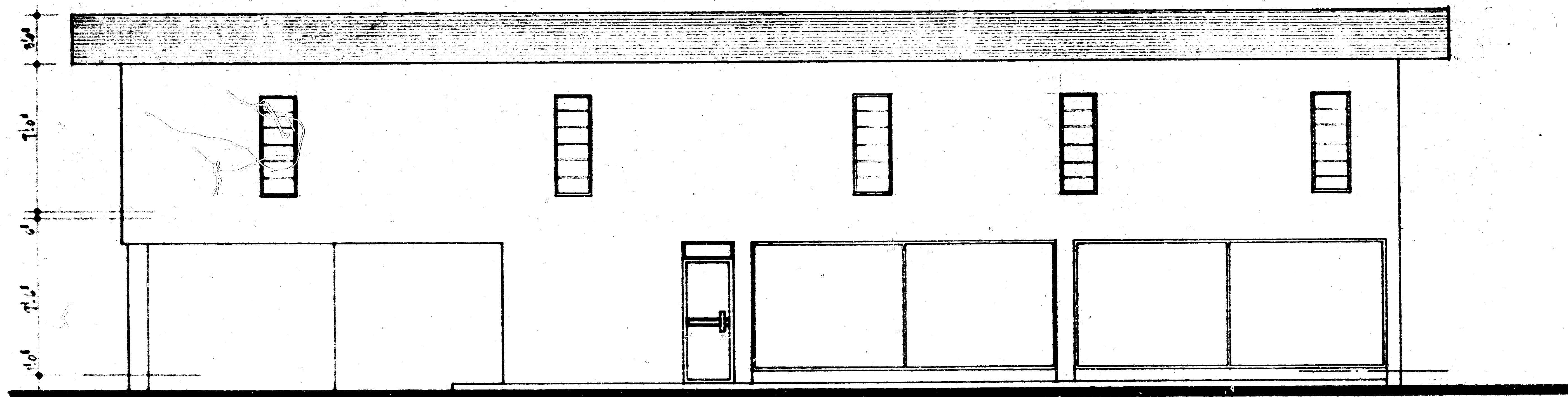
*Oscar Comzalez*  
73-2870

PROPOSED COMMERCIAL BUILDING FOR:		
CROWN STORE		
SCALE	APPROVED BY	DRAWN BY
DATE		
OSCAR COMZALEZ		
ARCHITECT		
		1 of 15

73-2870



RIGHT ELEVATION 4'-10"

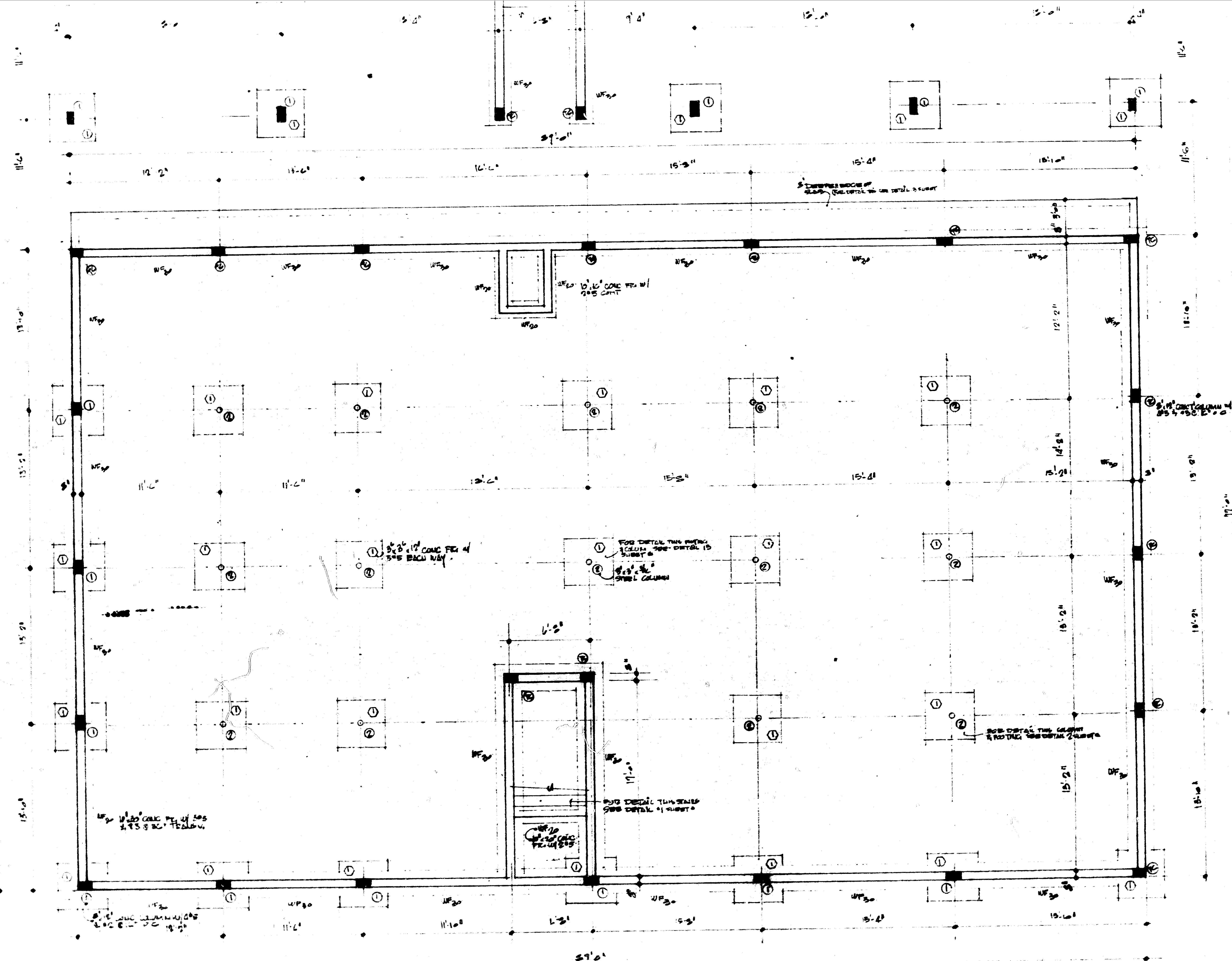


LEFT ELEVATION 11'-10"

*Revisión*  
43 2 870

PROYECTO COMERCIAL BUILDING		
CROWN STORE		
SCALE	APPROVED BY	DRAWN BY
DATE		
OSCAR GONZALEZ		
		4A OF 13

73-2870

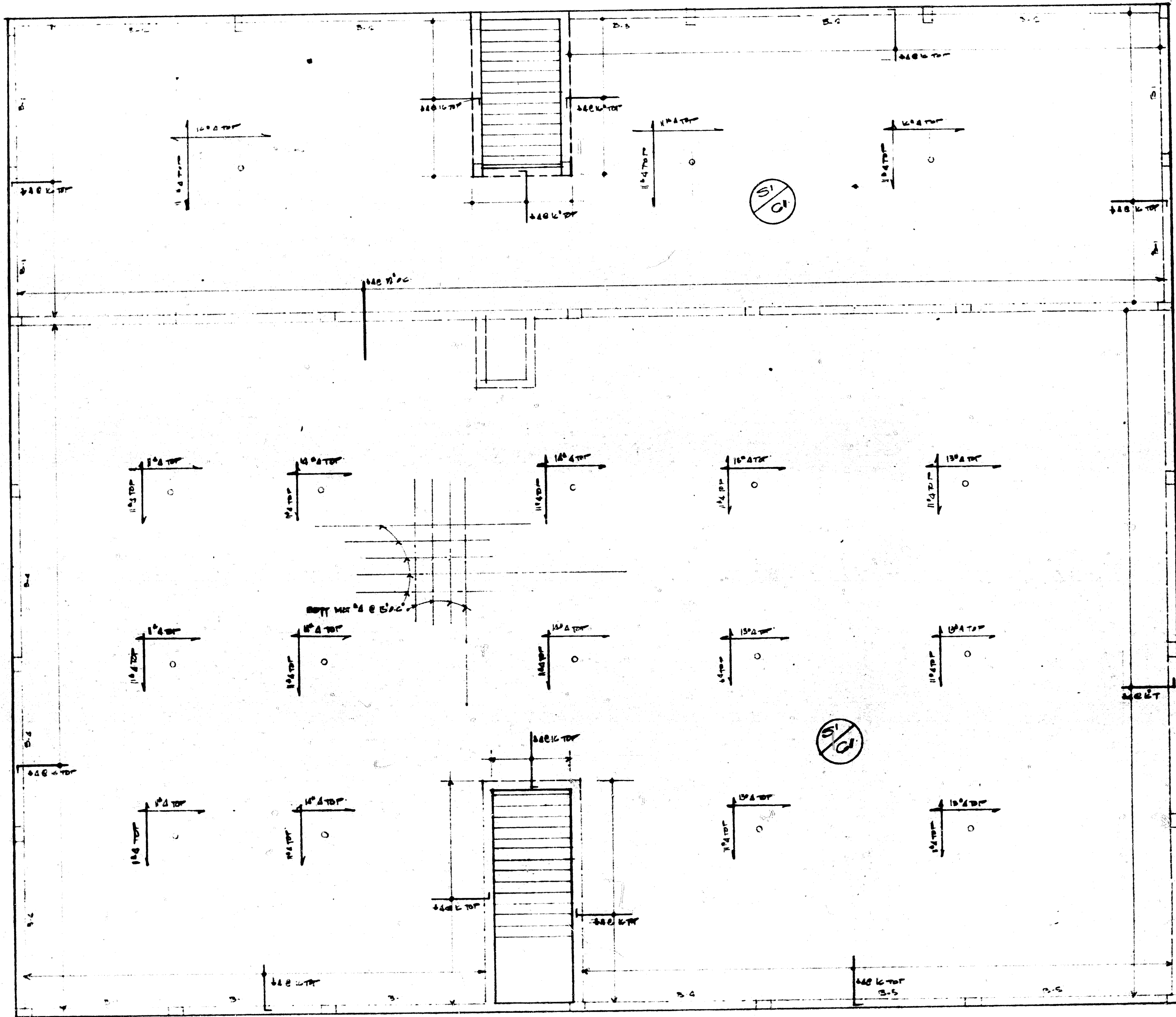


FOUNDATION PLAN 4

73-2870

PROPOSED COMMERCIAL BUILDING FOR CRINAL STORE		
SCALE AS SHOWN	APPROVED BY:	DRAWN BY:
DATE: 1/10/72		REVISED:
ALGER E. COLZANO ARCHITECT		
410 E 49th ST. NEW YORK		
		5 OF 13

73-2870



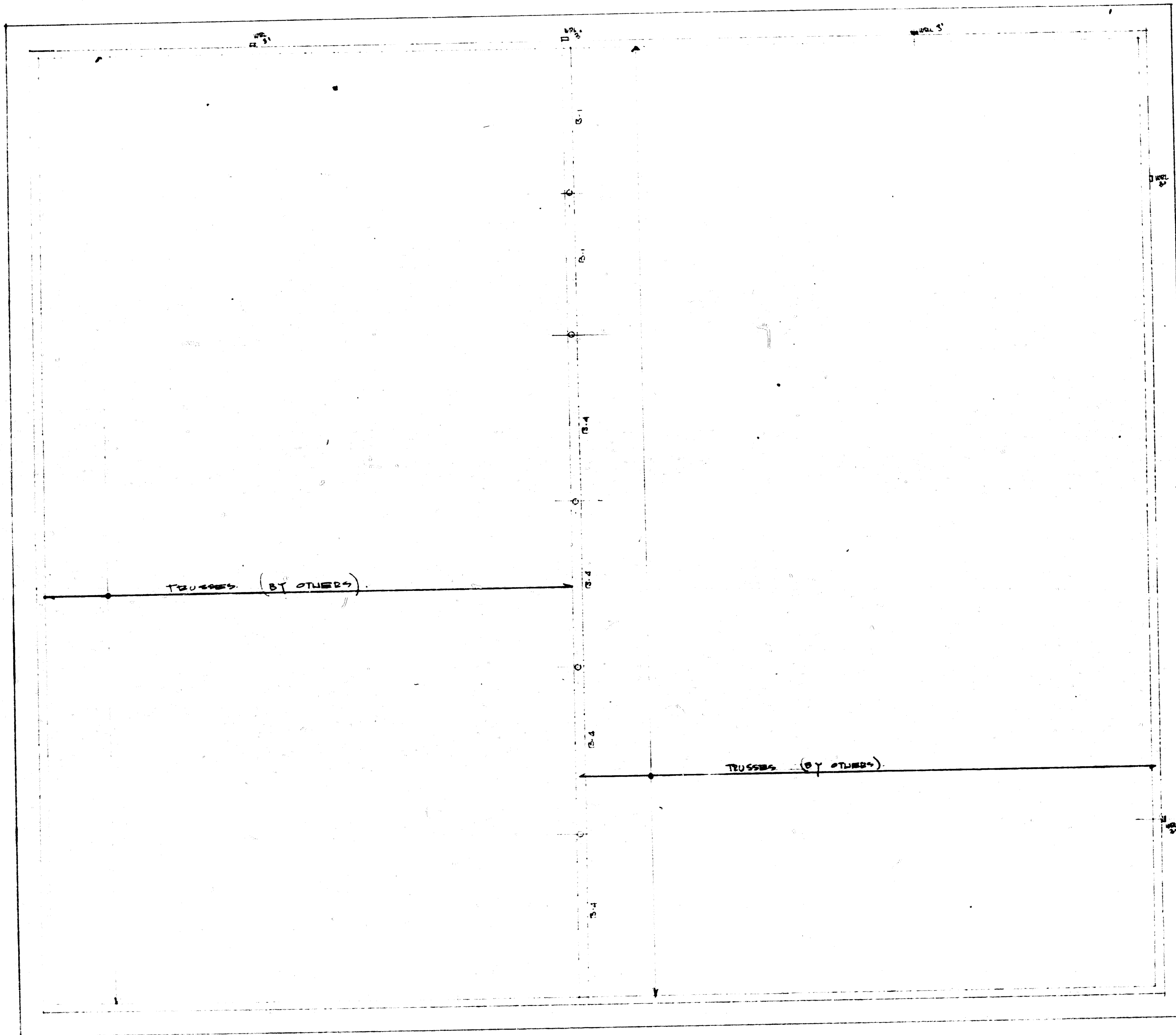
**CONCRETE:**

SLABS ALL FILL 2000 P.S.I. @ 28 DAYS  
 PARTINGS 2000 P.S.I. @ 28 DAYS  
 CURBS, BEAMS, WALLS, COLUMNS 3000 P.S.I. @ 28 DAYS

SECOND FLOOR FRAMING PLAN 1/4"

Drawing  
 73 2870

PROPOSED COMMERCIAL BUILDING FOR CROWN STORE		
SCALE 1/4" = 1'-0"	APPROVED BY:	DRAWN BY:
DATE: 10/1/72		REVISED:
CHECKED BY: CONRAD LEE		
DESIGNED BY:		
975 4TH ST. HIALEAH, FLA.		60713

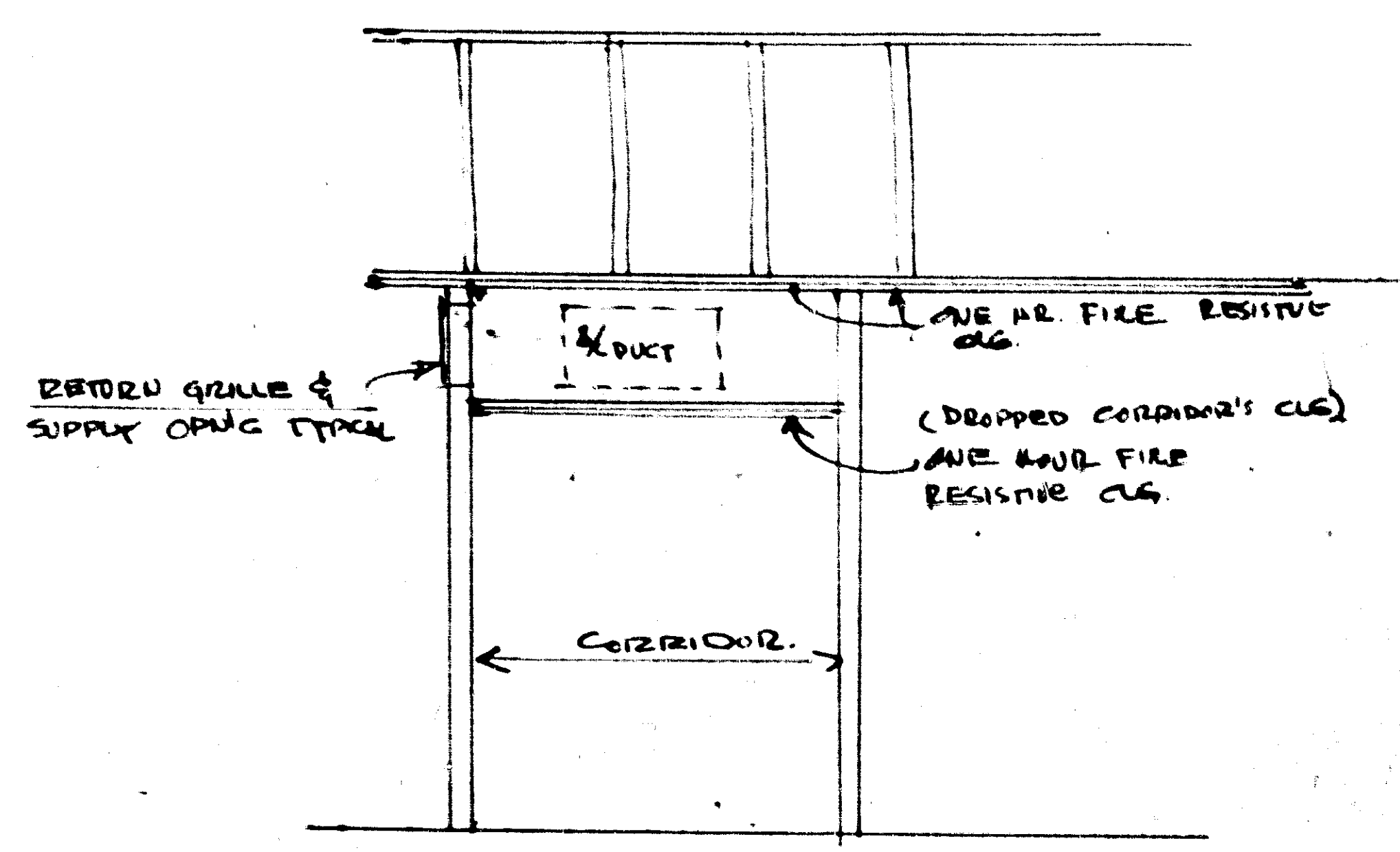
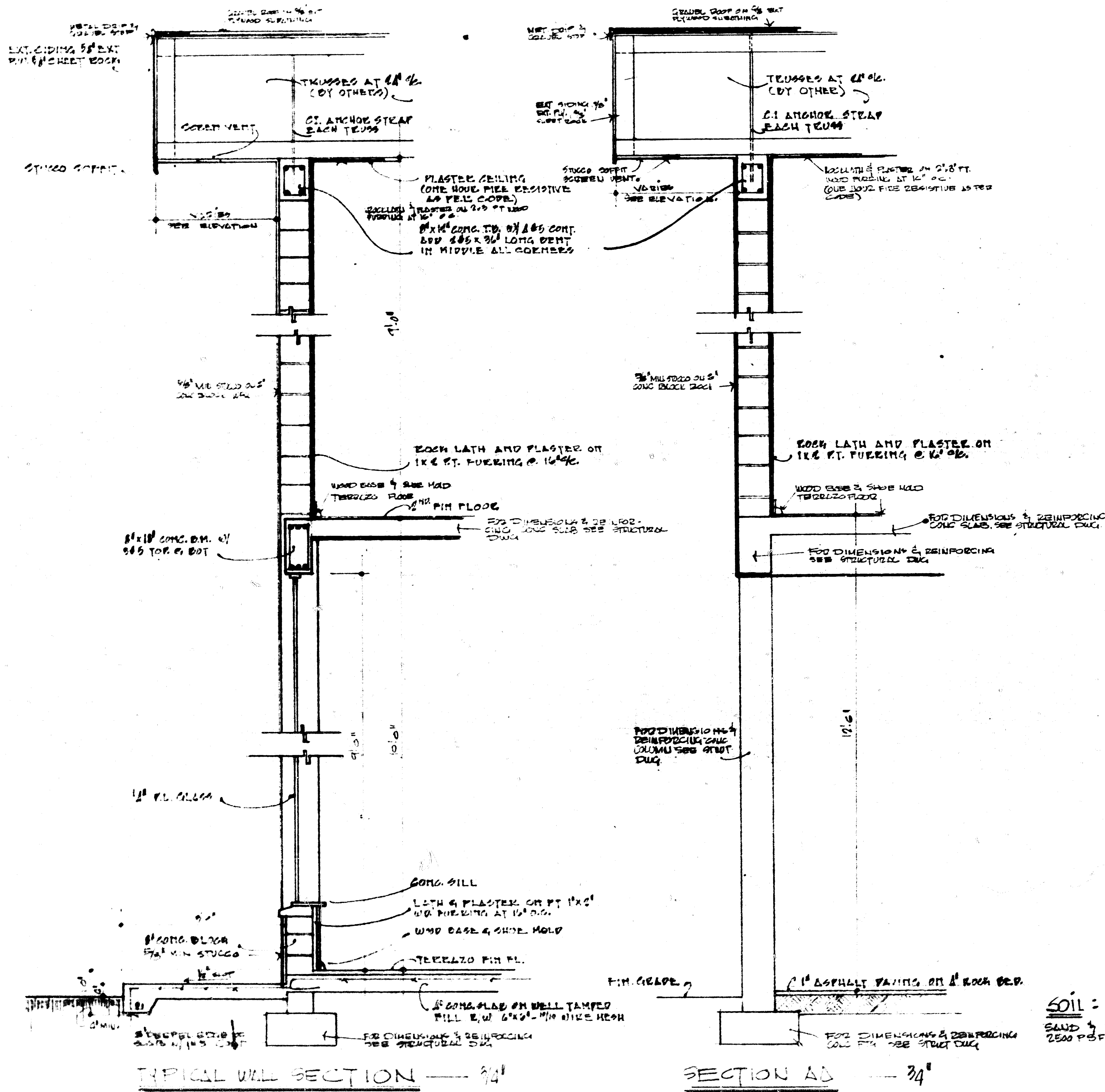


1st FLOOR 1/4"

*William J. ...*  
73 2870

PROPOSED COMMERCIAL BUILDING FOR CROWN STORE		
SCALE: AS SHOWN	APPROVED BY:	DATE:
DATE: 1/1/72	DESIGNED BY: WILLIAM J. ...	DATE:
715 E. 4th ST. WILLEM, PA.		7 OF 13





DOOR SCHEDULE				
NO.	SIZE	MAT.	LOCATION	REMARKS
1	9' x 6' x 1 1/2"	WOOD	ENTRY OFFICE	FLUSH TO CASE
2	6' x 6' x 1 1/2"	WOOD	TOILET	" " " "
3	9' x 6' x 1 1/2"	WOOD	ENTRY STORE	NOT TRUSS, SHD. CASE
4	6' x 6' x 1 1/2"	WOOD	METER ROOM	LOW AREA, W/ 1/2" SHEDDING IN METERS ROOM'S CASE
5	6' x 6' x 1 1/2"	WOOD	STORAGE	FLUSH
6	12' x 6'	GLASS	ENTRY STORE	TEMPERED GLASS, SHD. MET. TRUSS
7	12' x 6'	GLASS	ENTRY GRAND REAR	TEMPERED GLASS, SHD. MET. TRUSS

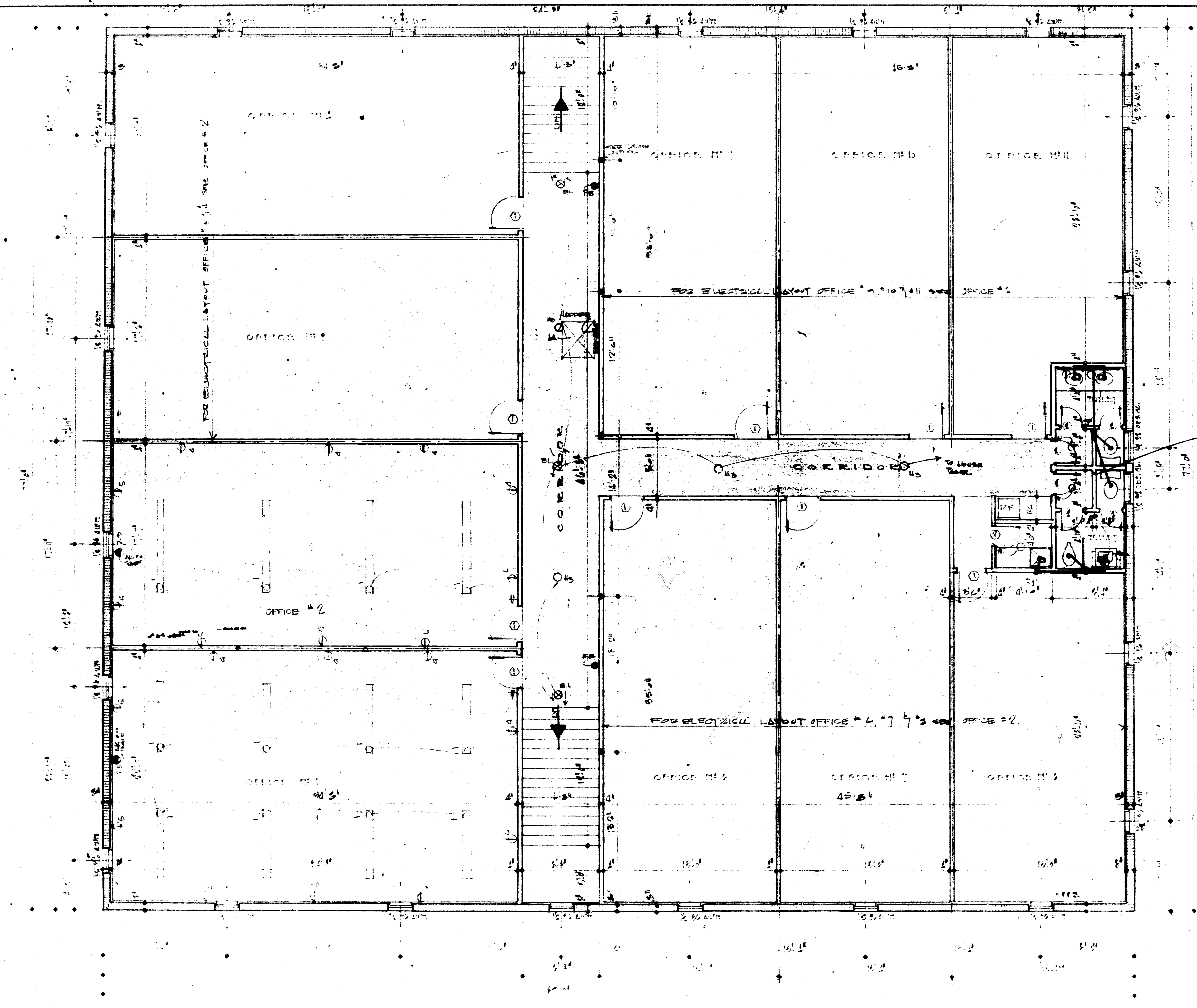
**SOIL:**  
SAND & LOOSE ROCK w/ BEARING CAPACITY 2500 PSF (BY VISUAL INSPECTION AT JOB SITE)

*Osca Gonzalez*  
73-2870

PROPOSED COMMERCIAL BUILDING FOR:		
CROWN STORE		
SCALE	APPROVED BY	DATE
<b>OSCA GONZALEZ</b>		
		7/15

73-2870





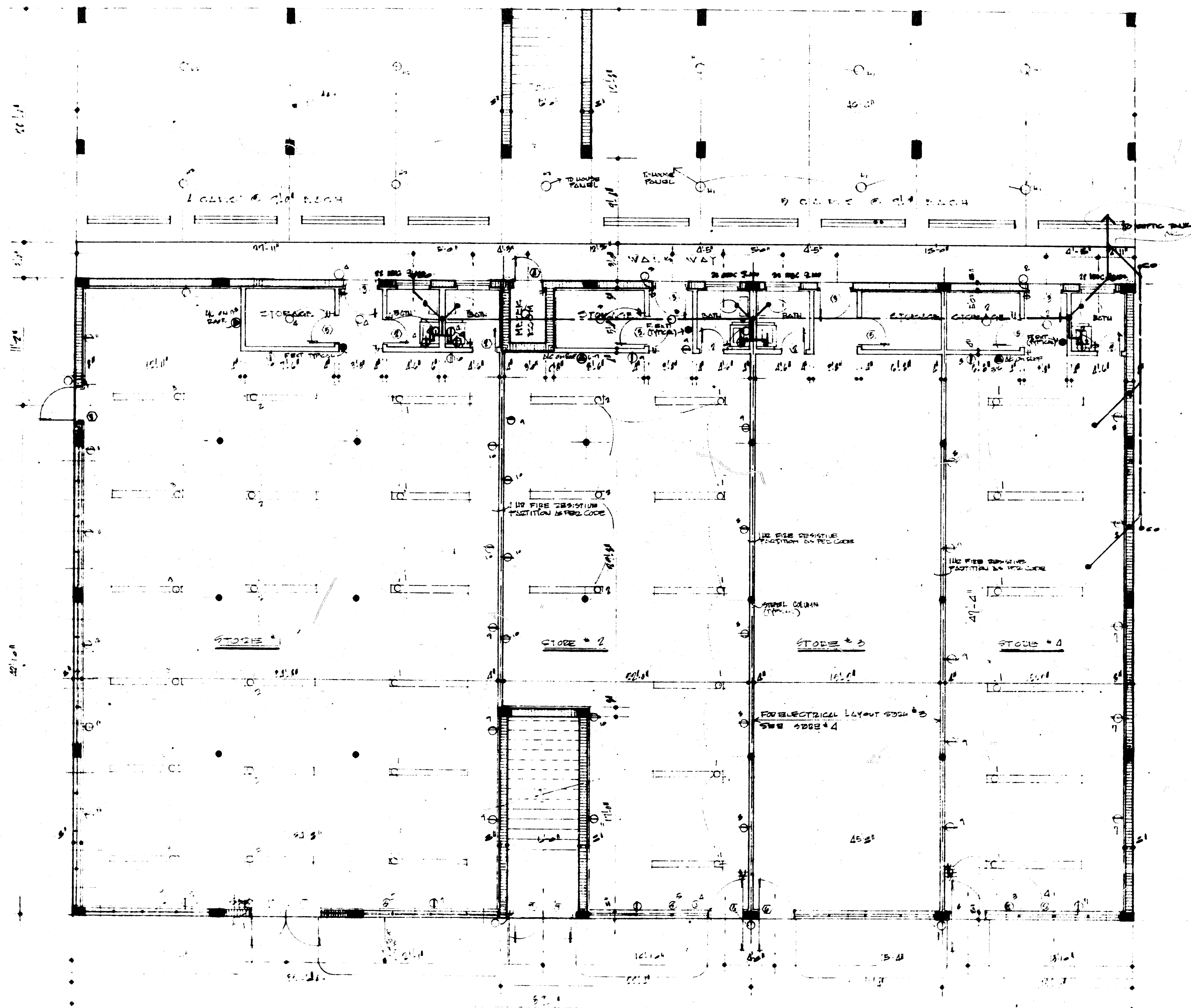
SEE  
REVISED

SECOND FLOOR PLAN - 14'-110'

*Revised*  
73-2870

PROJECT: DOMESTIC AIR CARRIER		
OFFICE: 2001		
SCALE:	APPROVED BY:	DRAWN BY:
DATE:	REVISION:	
OSCAR S. HEALEY		
		10 OF 13

73-2870



GROUND FLOOR PLAN - 1'-0"

*Beaman Group*  
73-2870

PROJECT: CONEILL BLDG. UNIT #300		
GROUND FLOOR		
SCALE	APPROVED BY	DRAWN BY
DATE	REVISION	
NICKLE COMPANY		
DRAWING NUMBER 11 OF 13		

73-2870

ELECTRICAL SCHEDULE (FLOOR #1)						
CIRC	USE	VOLTS	AMPS	FUSE	WIRE	COND
1	LIGHTING	115	8.0	20	#14	1/2"
4-5-6	RECEPT	115	14.0 6.0	20	#14	1/2"
			20.0			

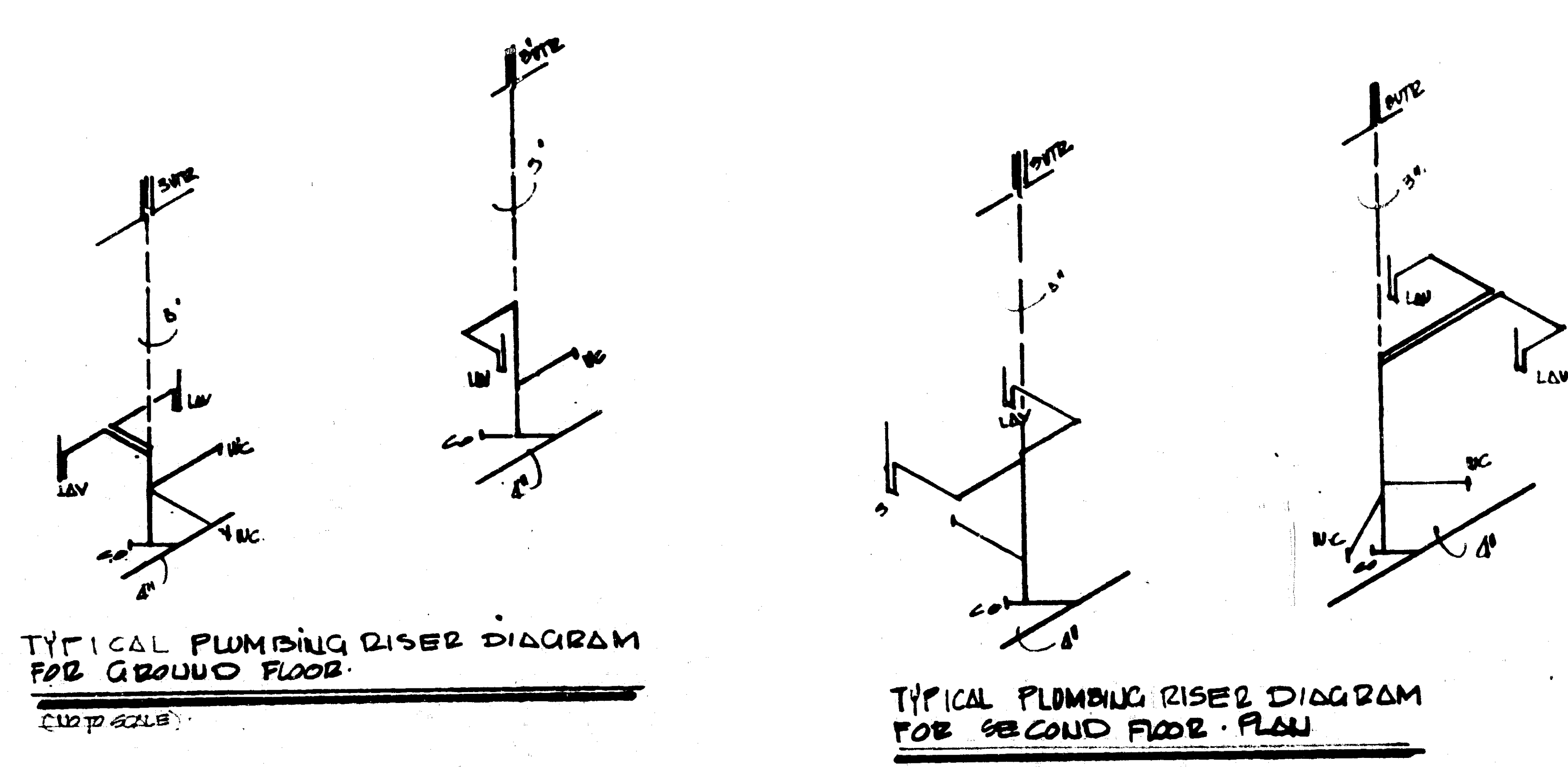
TOTAL OFFICE 10, 23.0 = 250.0 AMP  
 TWO LK  
 DUE FOR 3: FLOOR #1, 2, 3, 4 = 23.0 AMP  
 OTHER FOR OFFICE 5, 6, 7, 8, 9, 10 = 20.0 AMP  
 TOTAL LOADS 276.0 AMP

ELECTRICAL SCHEDULE (STORE #1)						
CIRC	USE	VOLTS	AMPS	FUSE	WIRE	COND
1-2-3	LIGHTING	115	7.0	20	#14	1/2"
4	LK	115	3.0	20	#14	1/2"
5	SGU	115	3.0	20	#12	1/2"
6	DISPLAY LITE	115	3.0	20	#12	1/2"
7-8	RECEPT	230	13.0	30	#10	3/4"
9-10	SPACE	115	6.0			
			45.0			

ELECTRICAL SCHEDULE (STORE #2)						
CIRC	USE	VOLTS	AMPS	FUSE	WIRE	COND
1-2	LIGHTING	115	6.0	20	#14	1/2"
3	LK	115	3.0	20	#14	1/2"
4	DISPLAY LITE	115	3.0	20	#14	1/2"
5	SGU	115	3.0	20	#12	1/2"
6-7	RECEPT	230	13.0	30	#10	3/4"
8-9	SPACE	115	6.0			
			42.0			

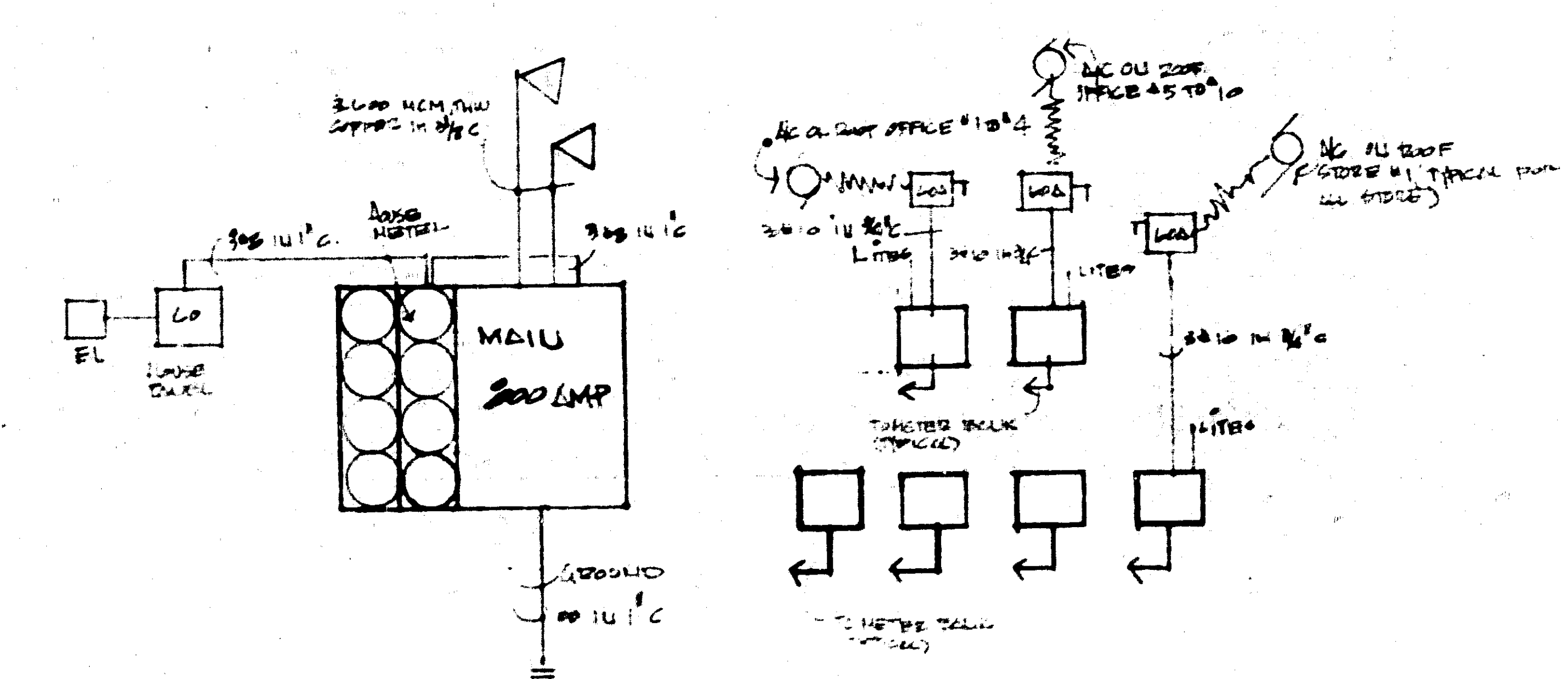
ELECTRICAL SCHEDULE (STORE #3 & 4)						
CIRC	USE	VOLTS	AMPS	FUSE	WIRE	COND
1	LIGHTING	115	8.0	20	#14	1/2"
2	LK	115	3.0	20	#14	1/2"
3	DISPLAY LITE	115	3.0	20	#12	1/2"
4	SGU	115	3.0	20	#12	1/2"
5-6	RECEPT	230	13.0	30	#10	3/4"
7-8	SPACE	115	6.0			
			54.5			

ROOF PANEL						
CIRC	USE	VOLTS	AMPS	FUSE	WIRE	COND
1-2-3-4	LIGHTING	115	7.0	20	#14	1/2"
5-6	RECEPT	115	6.0	20	#12	1/2"
7	SPACE	115	3.0			
			16.0			



TYPICAL PLUMBING RISER DIAGRAM FOR GROUND FLOOR.  
 (1/2" SCALE)

TYPICAL PLUMBING RISER DIAGRAM FOR SECOND FLOOR PLAN

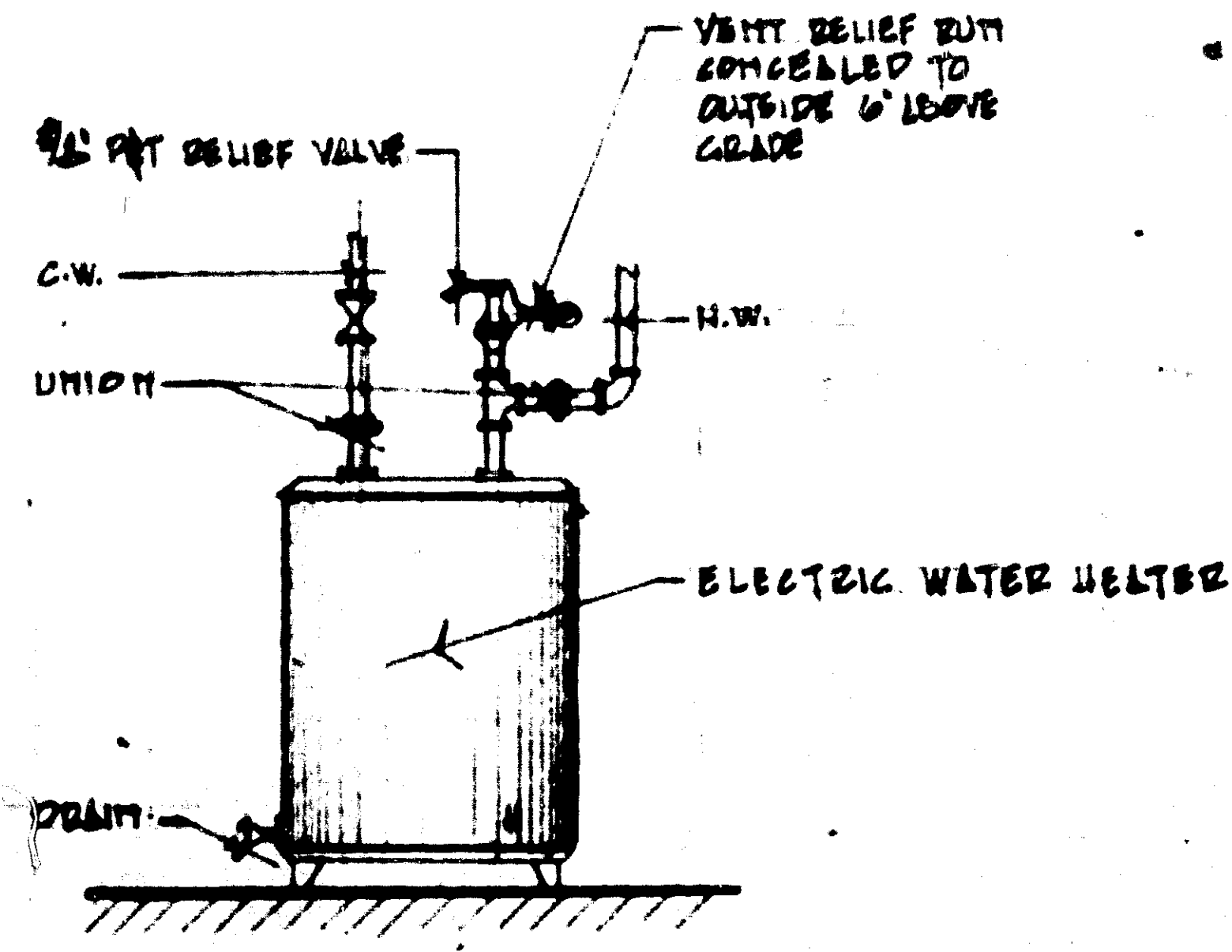


ELECTRICAL RISER DIAGRAM (UTS)

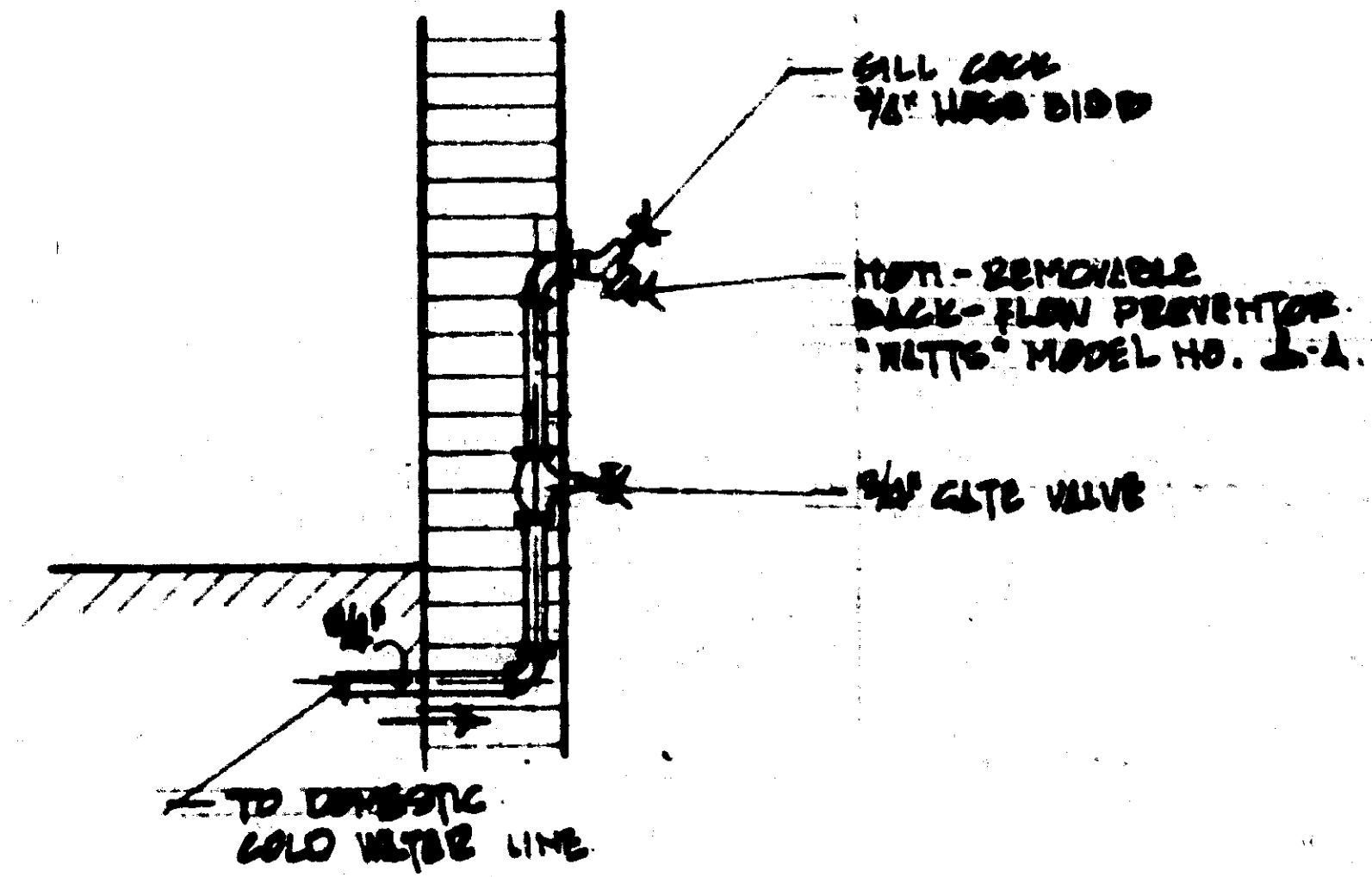
73-2870

PROPOSED COMMERCIAL BUILDING FOR 2nd FLOOR			
SCALE 1/8" = 1'-0"	APPROVED BY:	DESIGNED BY:	
DATE 1/27/78		REVISED:	
FLOOR PLAN		PROJECT	
375 E. 29th St. LINCOLN		18 OF 15	

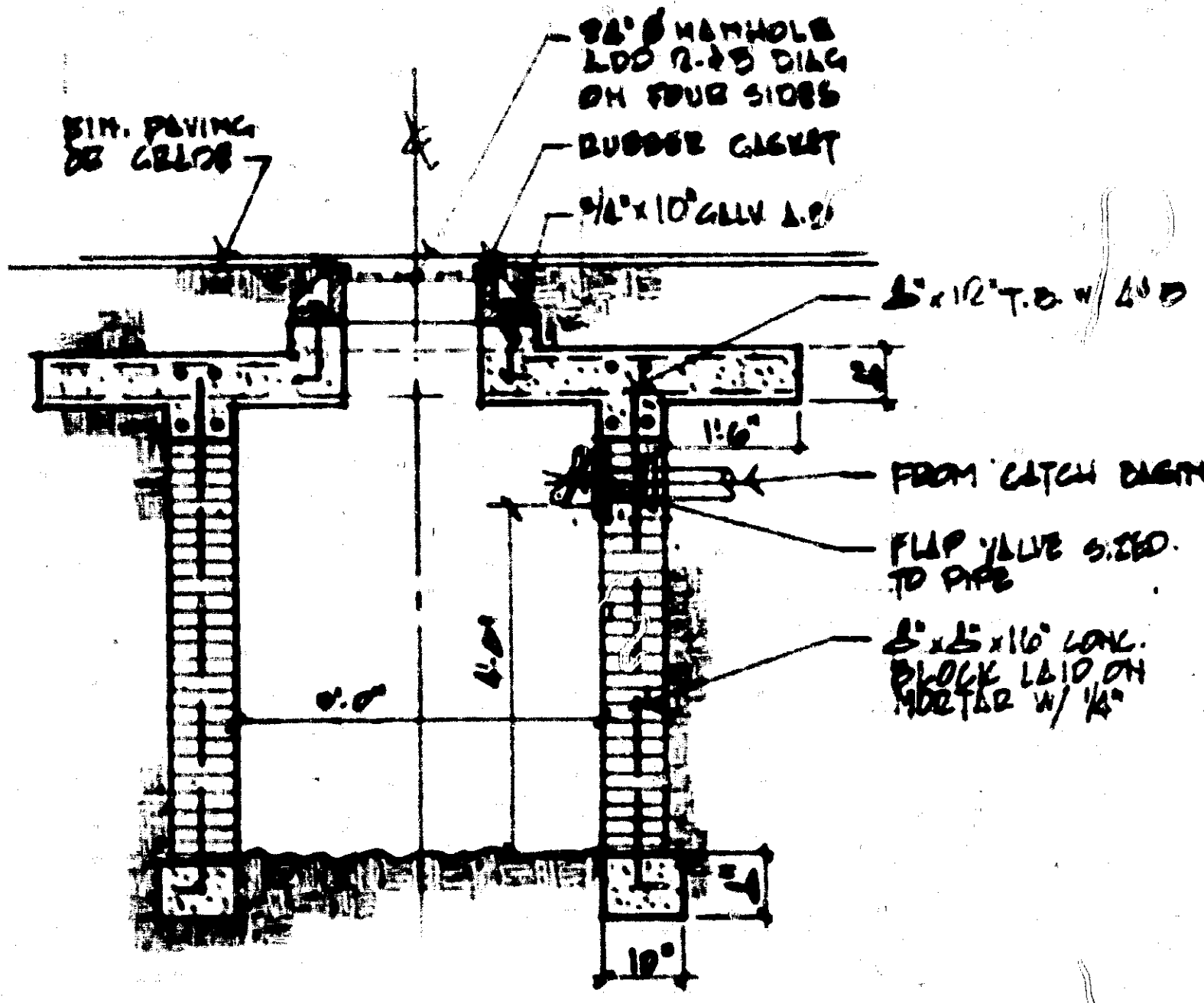
73-2870



**ELECTRIC WATER HEATER  
PIPING DIAGRAM**

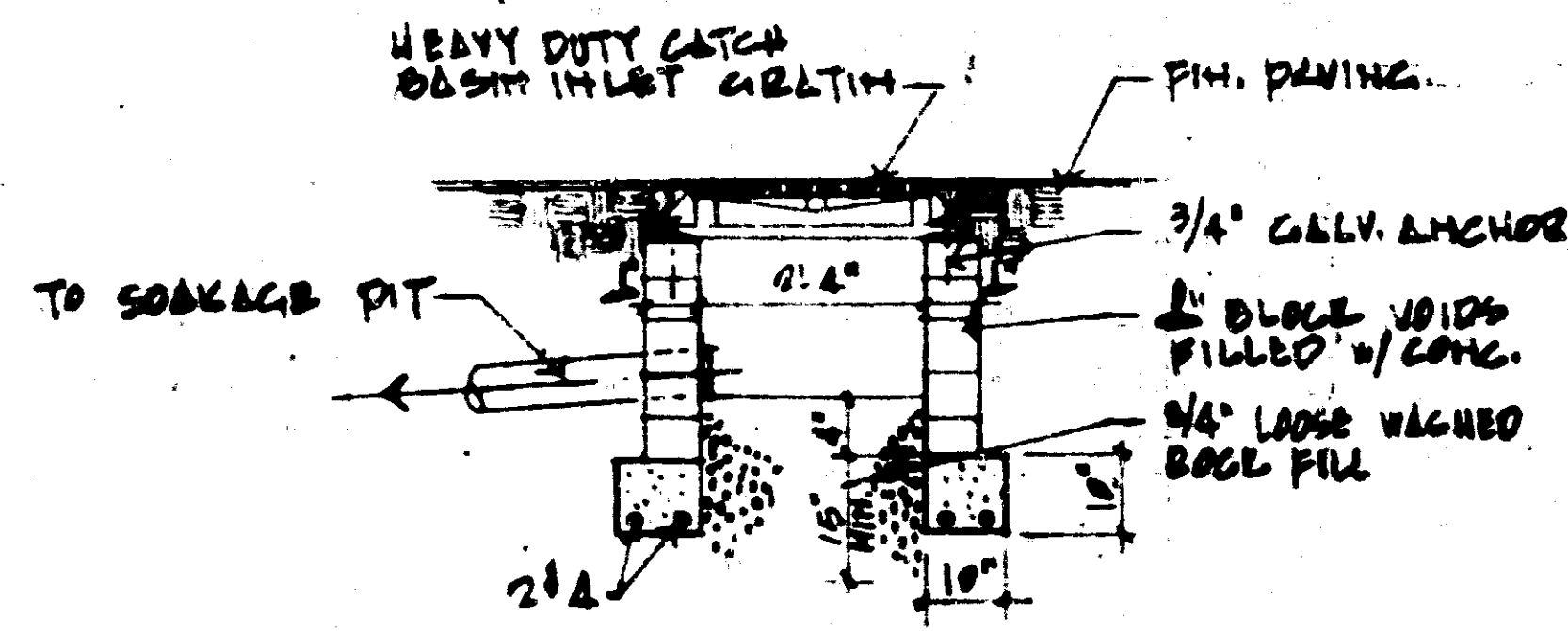


**TYP. W/SE BIBB CONNECTION**



**SOAKAGE PIT REINFORCING**  
 BOT. BARS 10\"/>

**SOAKAGE PIT DETAIL**



**CATCH BASIN DETAIL**

*Revised by*  
73-2870

PROPOSED COMMERCIAL BUILDING FOR		DATE
DOWN ESTATE		1927
SCALE AS SHOWN	APPROVED BY	ISSUED BY
DATE 12/1/27	PAUL V. AND OSCAR E. GONZALEZ	REVISION
L. R. C. U. I. T. E. C. O.		
315 E. 49th ST. MIAMI FLA.		1927

73-2870