

RESIDENTIAL LAND FOR SALE

RESIDENTIAL LAND FOR SALE | NAMPA, ID 83686



CONTACT

SAM MCCASKILL, CCIM

208.947.0804
sam@tokcommercial.com

LENNY NELSON

208.947.0806
lenny@tokcommercial.com

HIGHLIGHTS

Excellent South Nampa residential development property in the path of growth.

Located just off the primary retailer and services corridor of Nampa, 12th Avenue.

Surrounded by schools, parks, residential development, and major area retailers all within walking distance.

10-minute drive to Interstate 84 and downtown Nampa.

Medium-density residential future zoning, allows for single-family homes, duplexes, and townhomes with up to 5 dwelling units per acre.

Seller to keep residence at the NW corner of property.

DETAILS

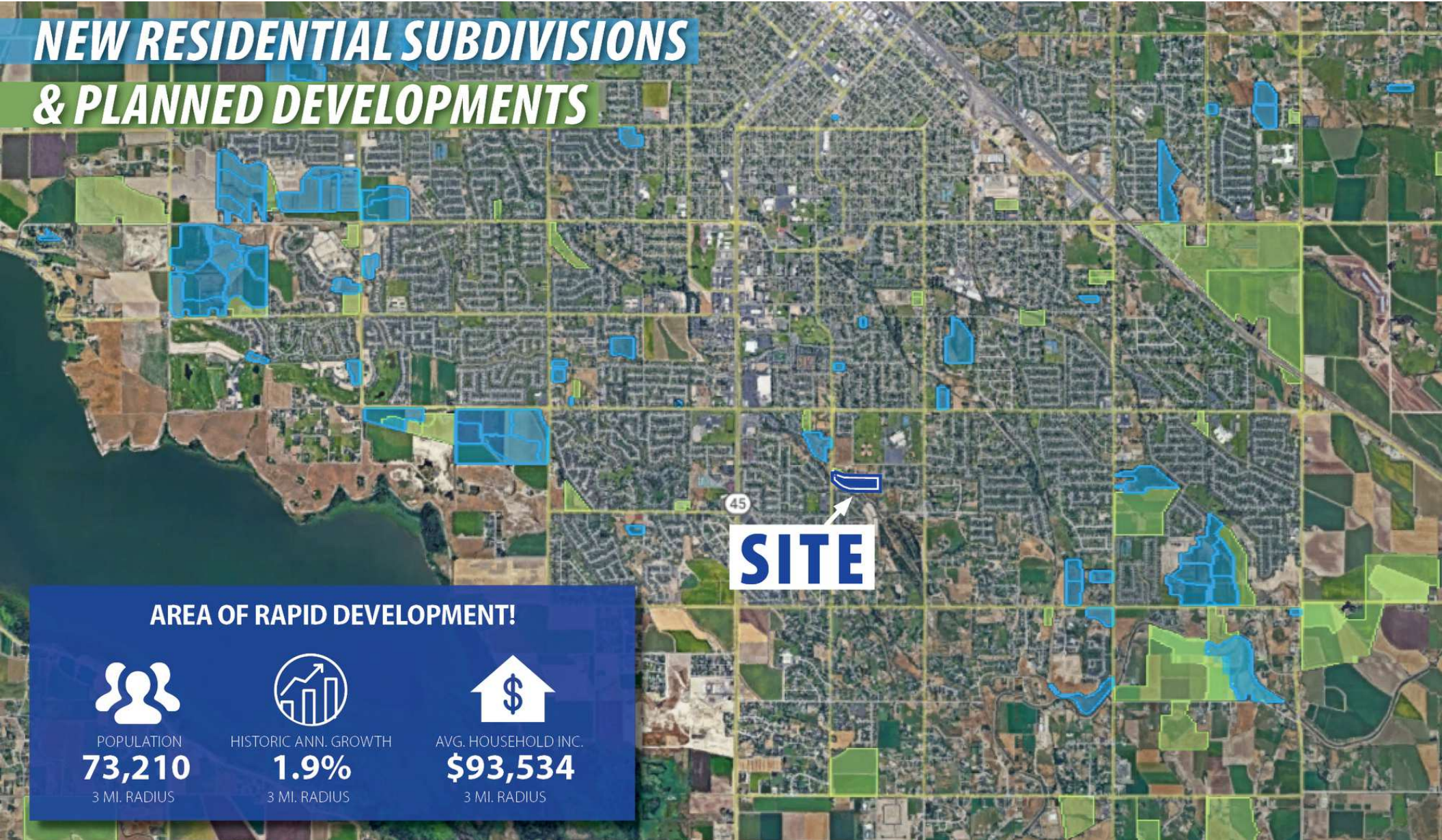
PROPERTY TYPE:	Residential Land
LOT SIZE:	+/- 10 Acres
SALE PRICE:	\$1,500,000
CURRENT ZONING:	RA, Suburban Residential
FUTURE ZONING:	Medium Density Residential

UPDATED: MAY 09, 2024

THIS PROPERTY IS EXCLUSIVELY MARKETED BY TOK BOISE LLC DBA TOK COMMERCIAL

This information was obtained from sources believed reliable but cannot be guaranteed. Any opinions or estimates are used for example only.

NEW RESIDENTIAL SUBDIVISIONS & PLANNED DEVELOPMENTS



AREA OF RAPID DEVELOPMENT!



POPULATION
73,210
3 MI. RADIUS



HISTORIC ANN. GROWTH
1.9%
3 MI. RADIUS

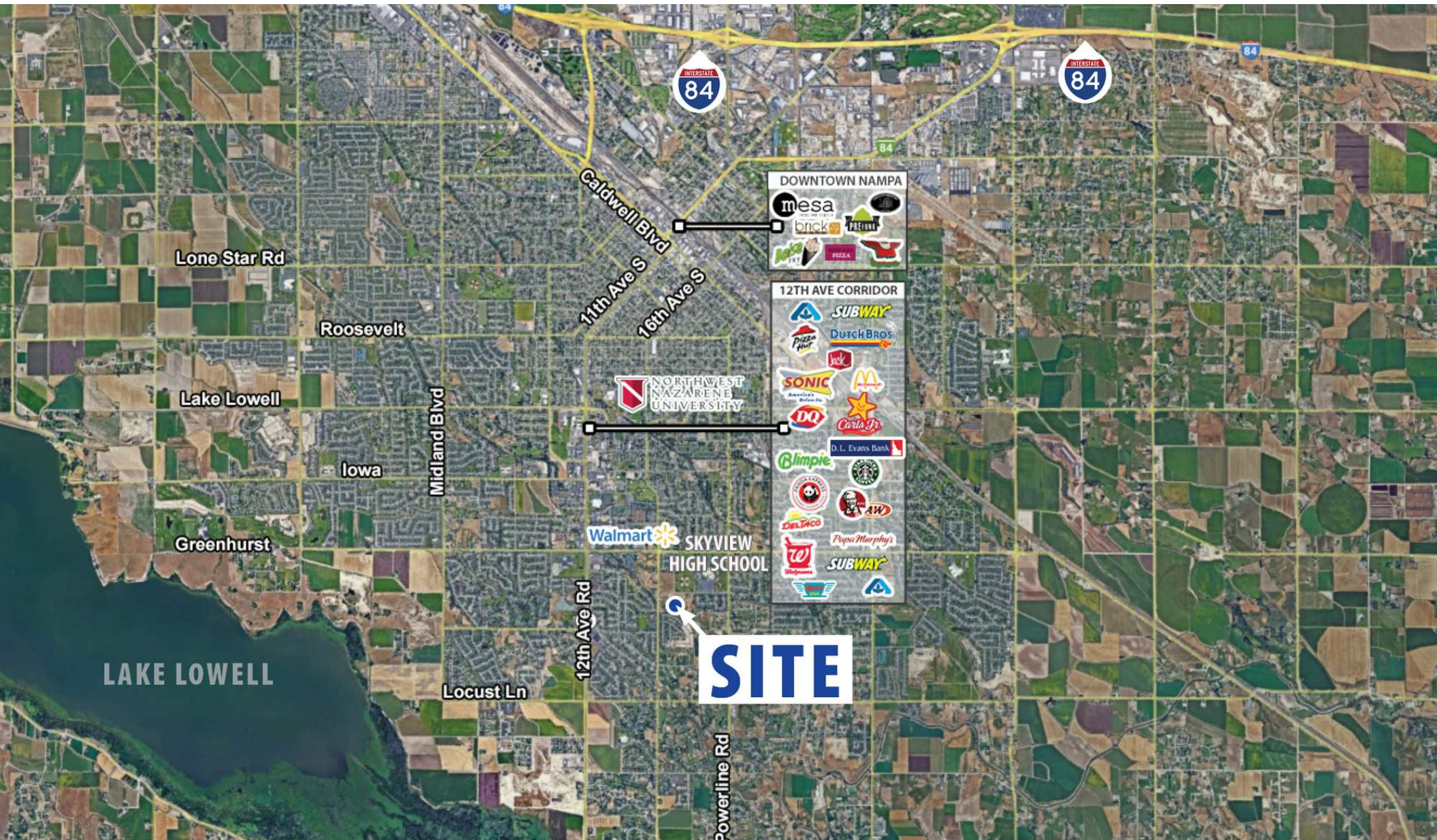


AVG. HOUSEHOLD INC.
\$93,534
3 MI. RADIUS

UPDATED: MAY 09, 2024

THIS PROPERTY IS EXCLUSIVELY MARKETED BY TOK BOISE LLC DBA TOK COMMERCIAL

This information was obtained from sources believed reliable but cannot be guaranteed. Any opinions or estimates are used for example only.



UPDATED: MAY 09, 2024

THIS PROPERTY IS EXCLUSIVELY MARKETED BY TOK BOISE LLC DBA TOK COMMERCIAL
This information was obtained from sources believed reliable but cannot be guaranteed. Any opinions or estimates are used for example only.