



RAINE VENTURES

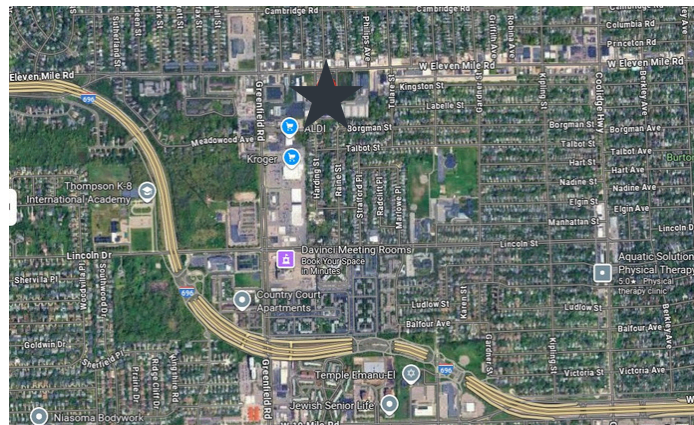
14925 W. 11 MILE ROAD
OAK PARK, MI 48237

TYPE ENGINEERING / PROTOTYPE

SIZE 36,300 SQUARE FEET
WAREHOUSE- 21,300
OFFICE- 15,000

PROPERTY HIGHLIGHTS

- 2 TRUCKWELLS
- RECENTLY RENOVATED
- AMPLE PARKING SPACES
- 11 MILE ROAD FRONTAGE WITH HIGH VISIBILITY
- HIGH END FURNITURE AVAILABLE FOR TURN KEY SPACE
- ONE-TWO TON CRANE
- PROFESSIONALLY MANAGED
- WELL MAINTAINED
- LIGHT INDUSTRIAL ZONING



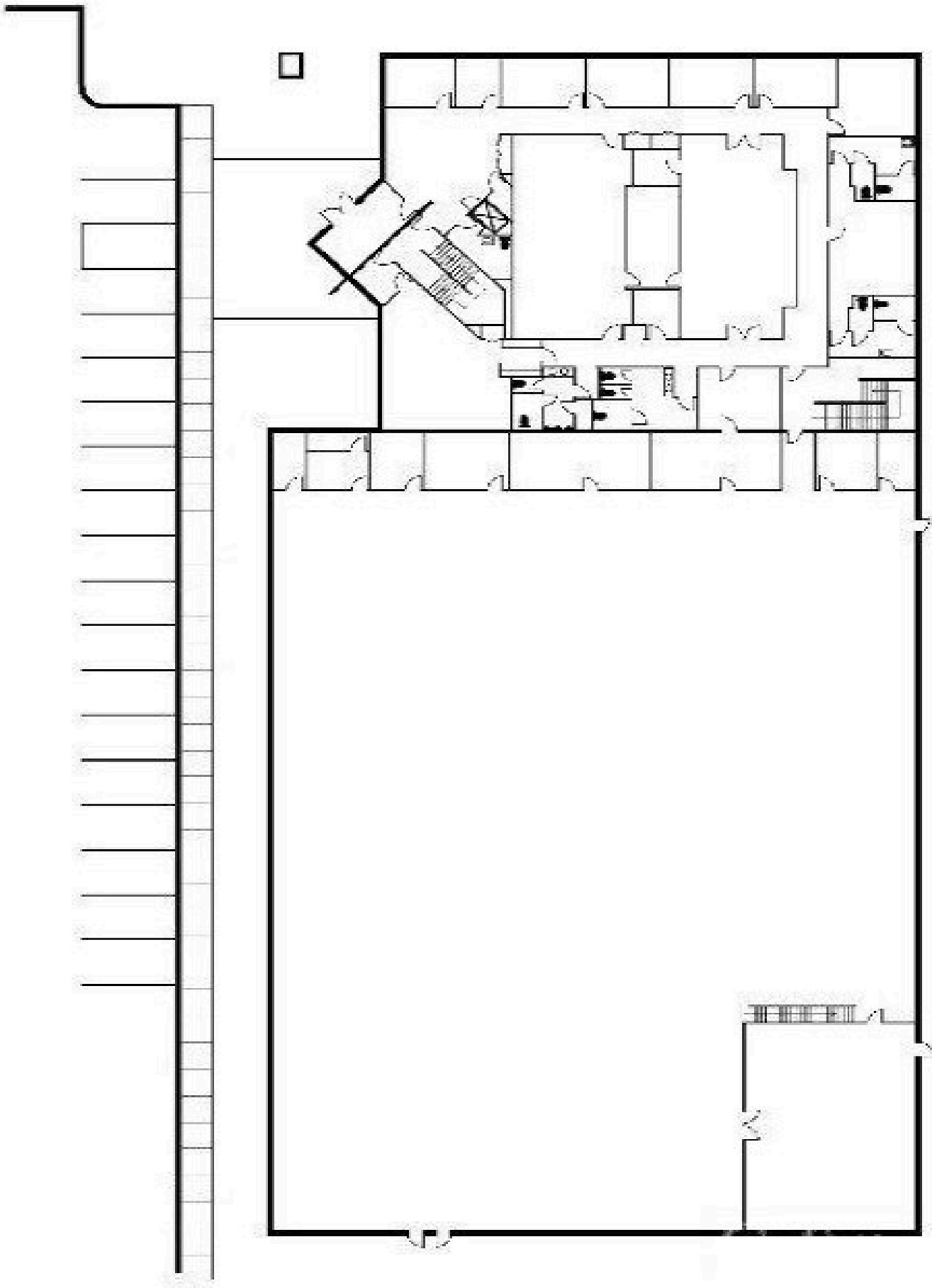
CENTRALLY LOCATED
8 MILE ROAD- 8 MINUTES
696- 4 MINUTES
M10- THE LODGE-8 MINUTES
M39-Southfield-7 MINUTES
I-75- 11 MINUTES

BROKER PROTECTED

CONTACT US

BETHANY HALEY
947-366-0927 | BHALEY@AVISPROP.COM

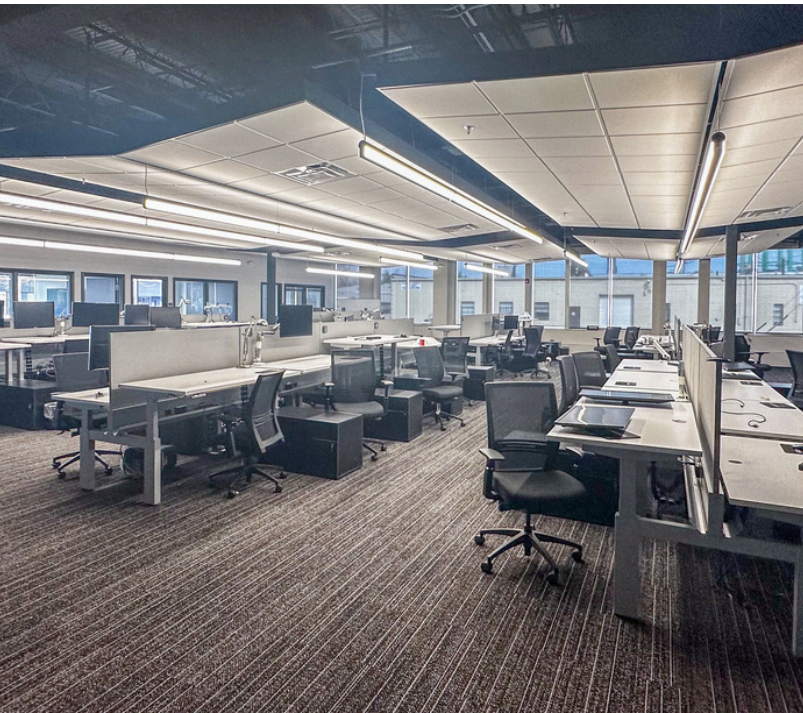
Avis property
management



CONTACT US

BETHANY HALEY
947-366-0927 | BHALEY@AVISPROP.COM

Avis property
management



CONTACT US

BETHANY HALEY
947-366-0927 | BHALEY@AVISPROP.COM

Avis property
management



CONTACT US

BETHANY HALEY
947-366-0927 | BHALEY@AVISPROP.COM

Avis property
management

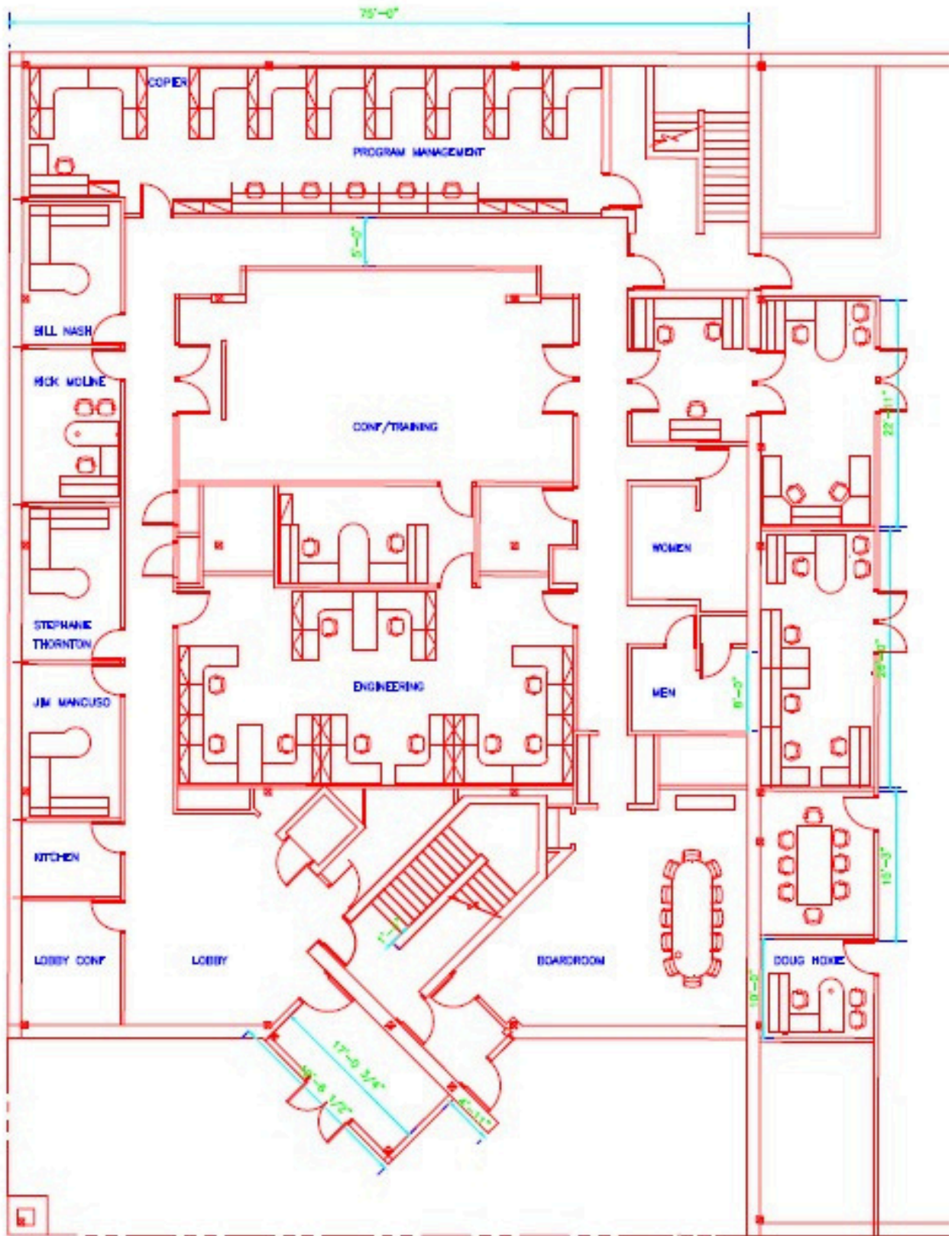


CONTACT US

BETHANY HALEY
947-366-0927 | BHALEY@AVISPROP.COM

Avis property
management

FIRST FLOOR OFFICE LAYOUT

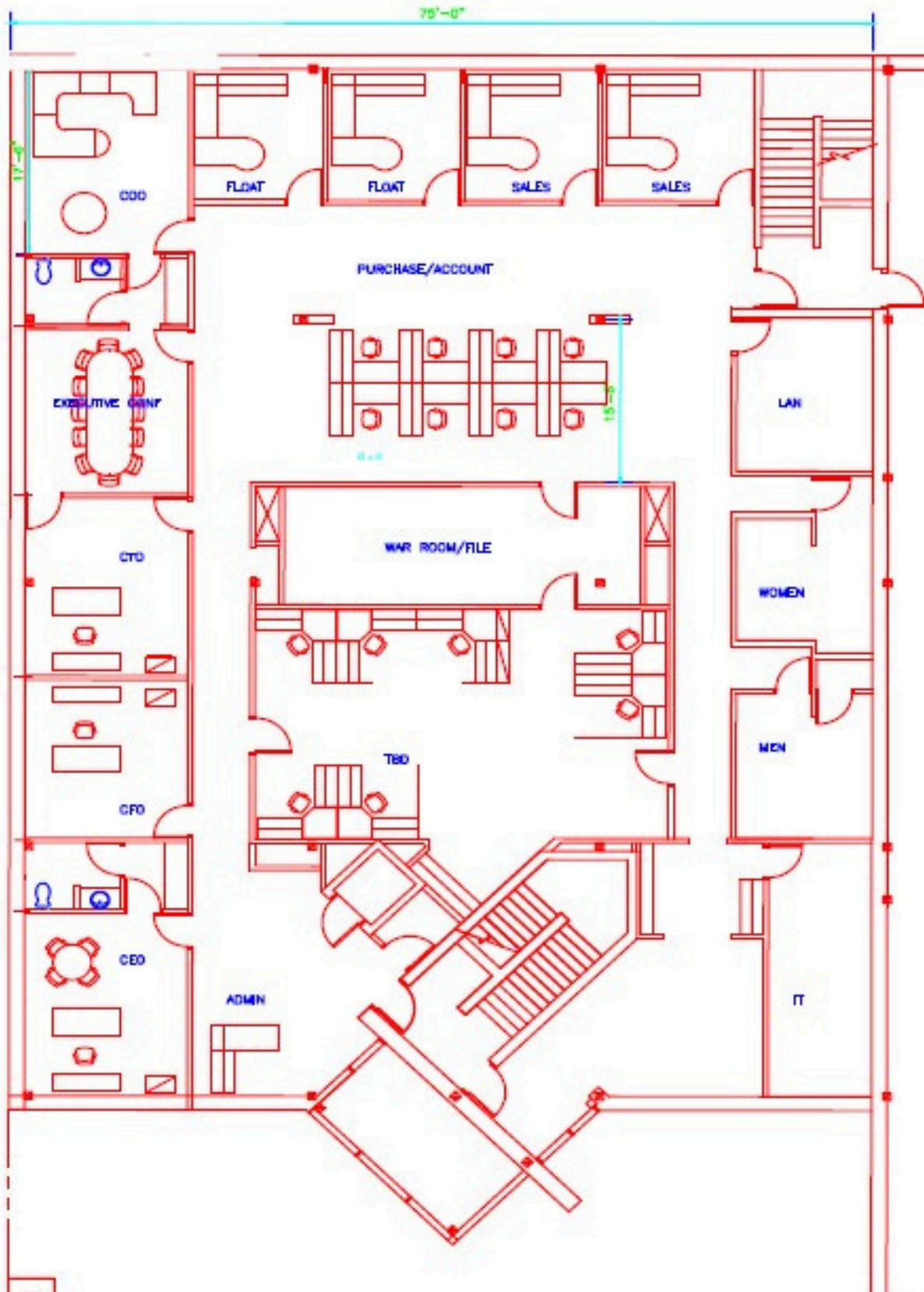


CONTACT US

BETHANY HALEY
947-366-0927 | BHALEY@AVISPROP.COM

Avis property
management

SECOND FLOOR OFFICE LAYOUT



CONTACT US

BETHANY HALEY
947-366-0927 | BHALEY@AVISPROP.COM

Avis property
management

RAINE VENTURES

14925 W. 11 MILE ROAD
OAK PARK, MI 48237

TYPE ENGINEERING PROTOTYPE

SIZE 36,300 SQUARE FEET
WAREHOUSE- 21,300
OFFICE- 15,000

PROPERTY OVERVIEW

County: Oakland
Zoning: Light Industrial

Lease Rate: TBD NNN
Estimated NNN: \$2.50psf

BUILDING SPECIFICS

| | | | |
|----------------------------|-------------|---------------------------|----------------------------|
| Year Built: | 1996 | Parking: | 85 Spaces |
| Total Available: | 36,300 SF | HVAC: | 100% AC |
| Available Shop: | 21,300 SF | Power: | 2,000a/480v w/ transformer |
| Available Office: | 15,000 SF | Lighting: | Energy Efficient/LED |
| Construction: | Block | Restrooms: | Ample |
| Stories: | Two | Security System: | Yes |
| Floors: | 6' Concrete | Grade Level Doors: | 1- 12' x 14' |
| Max Ceiling Height: | 26' | Truckwells/Docks: | 2 |
| Sprinklers: | Yes | Cranes: | 1- 2 Ton |
| | | Bay Sizes: | 45' x 45' |

CONTACT US

BETHANY HALEY
947-366-0927 | BHALEY@AVISPROP.COM

Avis property
management