



FOR LEASE:

Retail/Warehouse/Yard Opportunity

16624 N 32nd St | PHOENIX, AZ 85032

LEV ROSE
COMMERCIAL REAL ESTATE

TCN
COMMERCIAL
REAL ESTATE SERVICES

OFFERING SUMMARY

Address: 16624 N 32nd St
Scottsdale, AZ 85254

Availability: Office: $\pm 1,800$ SF
Warehouse/Storage: $\pm 1,310$ SF
Total: $\pm 3,110$ SF

Asking Rate: Call for Details

Zoning: C-3, City of Phoenix

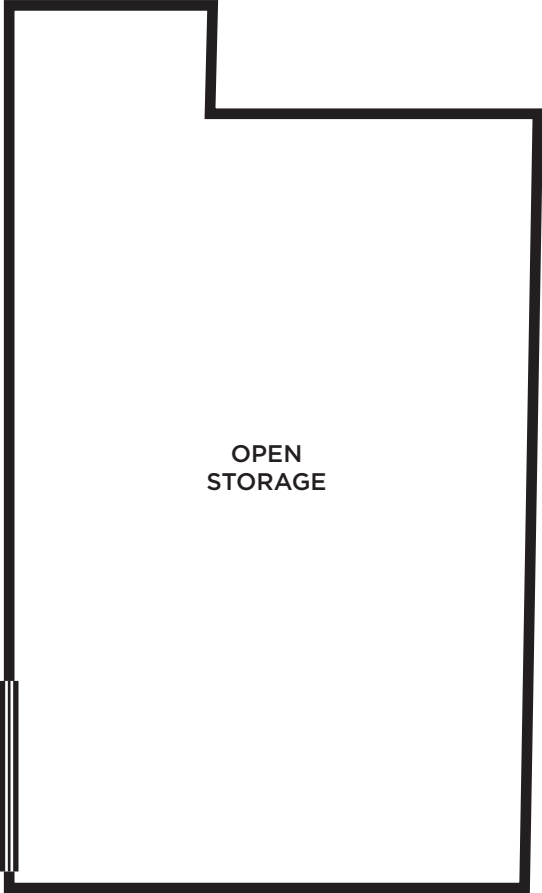
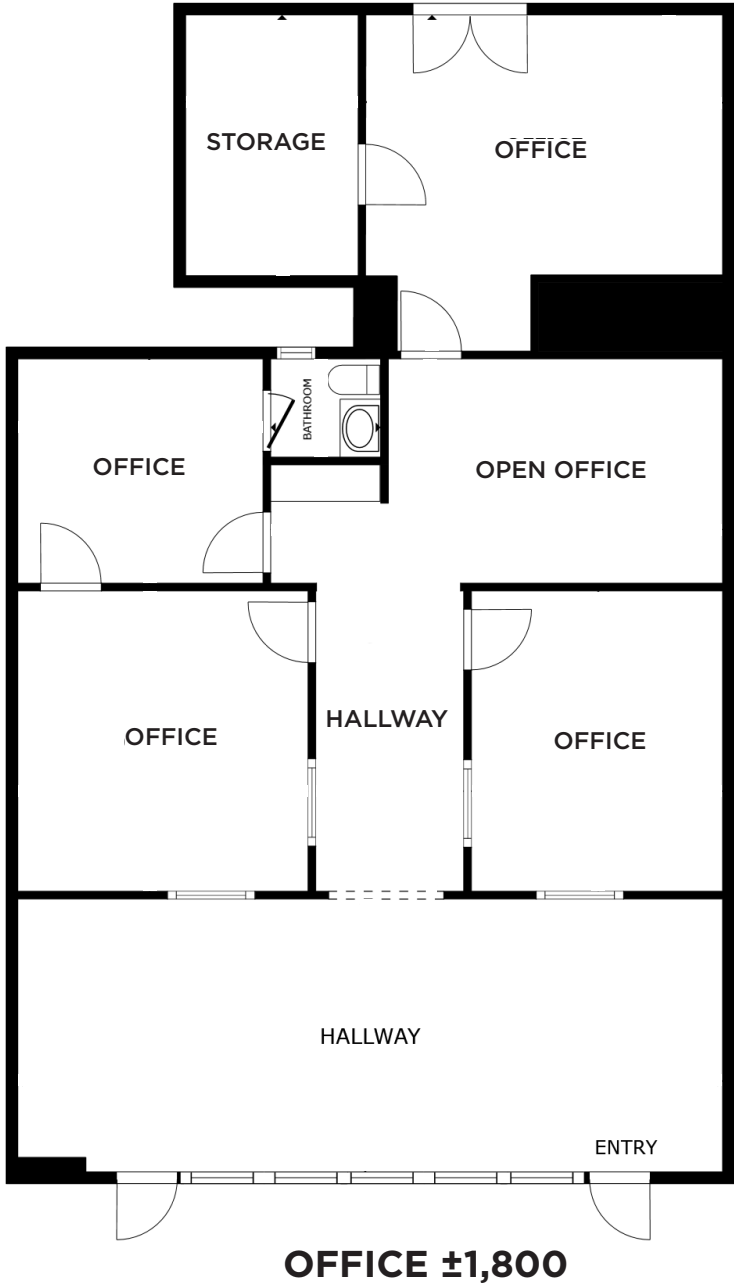
PROPERTY HIGHLIGHTS

- Versatile leasing options including Office/Retail portion and Warehouse/Storage space which can be leased together or separately.
- Opportunity for shared yard space
- Close Proximity to Numerous Retail and Restaurant Establishments
- Easy Freeway Access to the Hwy 51
- Effortless Pull Up Parking Directly Out Front of the Suite

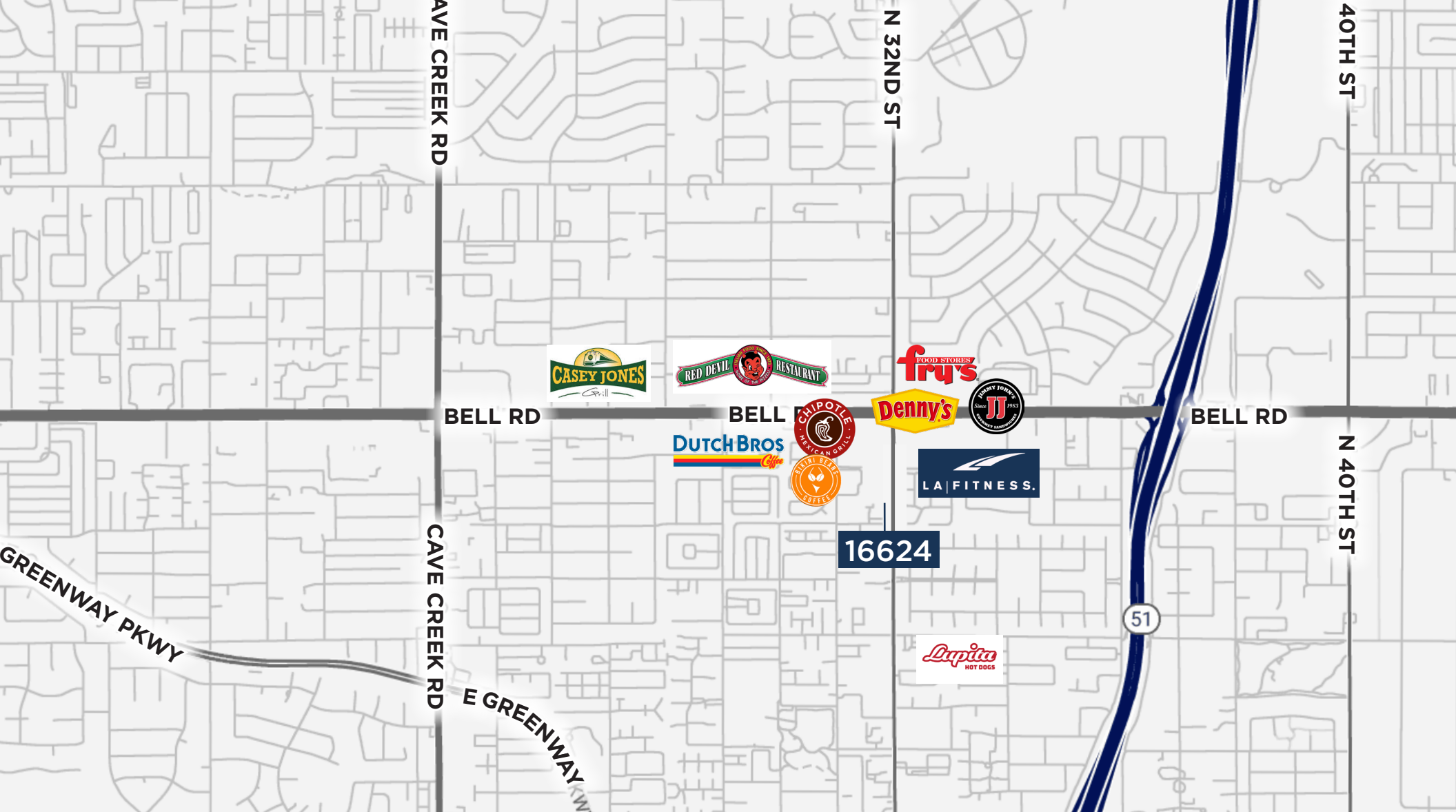


FLOOR PLAN - ±3,110 SF

[VIEW OFFICE TOUR](#)



WAREHOUSE/STORAGE ±1,310



LOCATION HIGHLIGHTS



SITUATED DIRECTLY OFF
OF 32ND STREET



100+ RESTAURANTS
WITHIN 3 MILES



± 10 MINUTES FROM
PARADISE VALLEY MALL



±20 MINUTES FROM
SCOTTSDALE AIRPARK



HUNTER CHASSE

Partner

480.289.4225

hchasse@levrose.com

LEVROSE
COMMERCIAL REAL ESTATE

TCN
COMMERCIAL
REAL ESTATE SERVICES

This information has been secured from sources believed to be reliable, but no representations or warranties are made, expressed or implied, as to the accuracy of the information. References to square footage are approximate. Buyer and tenant must verify the information and bears all risk for any inaccuracies. All quoted prices are subject to change without notice.