



Quiet campus-like setting overlooking beautiful lake

- Lakecrest at Corporex Park is a 59,841 square foot class B office building located in Corporex Park near the intersection of I-4 and Martin Luther King Boulevard.
- The property is situated within a premier business park that includes a hotel and daycare center.
- Frontier communications and Spectrum Internet services available



Secure building with keypad access and camera system



Back-up generator power available to select suites



4/1,000 parking ratio



Monument signage available to all tenants

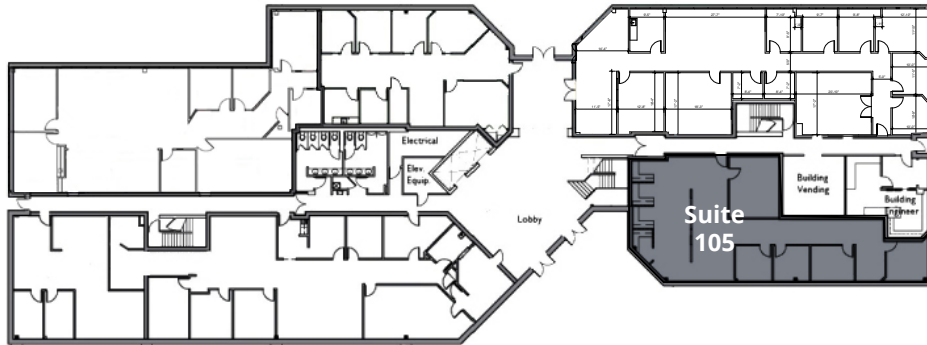
**Get more
information**

Michael Coppola
Senior Associate
+1 813 444 0625

avisonyoung.com

First Floor Space

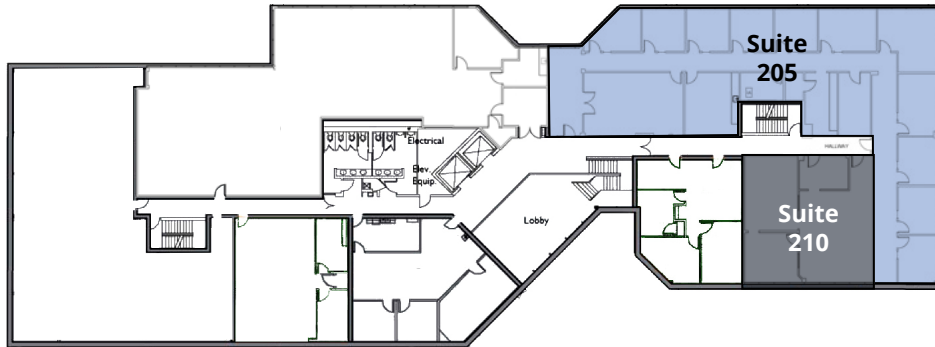
Suite 105 - 2,420 sf (avail. Jan 2025)



Second Floor Space

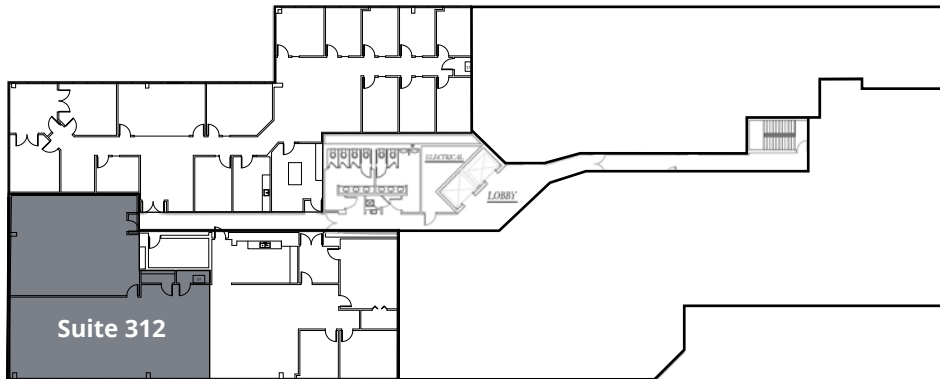
Suite 205 - 4,882 sf (sublease)

Suite 210 - 1,396 sf



Third Floor Space

Suite 312 - 2,616 sf



Michael Coppola
Senior Associate
+1 813 444 0625

