



VACANT HWY 55 FOR SALE OR LEASE

3306 Cloverdale Rd, Florence, AL 35633

Stand-alone Former Hwy 55 with Drive-Thru in High Traffic Location



REDUCED LEASE RATE:
\$145,000/yr NNN

REDUCED SALE PRICE:
\$2,000,000

SIZE:
2,152 SF Newly Constructed in 2023
Stand-Alone with Drive-Thru
1.07 Acres

SIGNAGE:

- Large monument sign fronting Cloverdale Road
- Traffic Count: 17,108 AADT

IDEALLY LOCATED:

- Ideally located along active retail corridor
- Near Walmart, Taco Bell, McDonald's, Dollar General, Zaxby's, Culvers, Jack's and more!



CASEY HOWARD
choward@harbertrealty.com | 205.202.0814

LACEY SCOTT
lscott@harbertrealty.com | 205.401.1130

For More Information: Harbert-Retail.com
2 North 20th Street, #1700, Birmingham, AL 35203

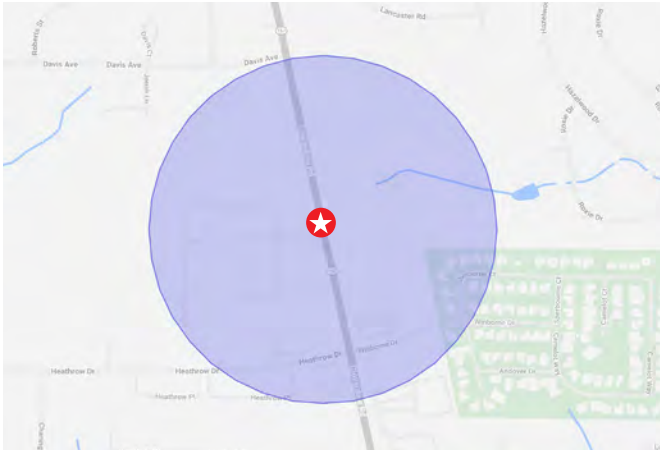
The information contained herein has been obtained from sources deemed reliable, however, HRS makes no guarantees, warranties or representation as to its completeness or accuracy thereof. The presentation of this property is submitted subject to errors, omissions, change of price or conditions, prior to sale or lease or withdrawal without notice.

VACANT HWY 55 FOR SALE OR LEASE

3306 Cloverdale Rd, Florence, AL 35633

Stand-alone Former Hwy 55 with Drive-Thru in High Traffic Location

LOCATED IN ACTIVE FLORENCE RETAIL CORRIDOR



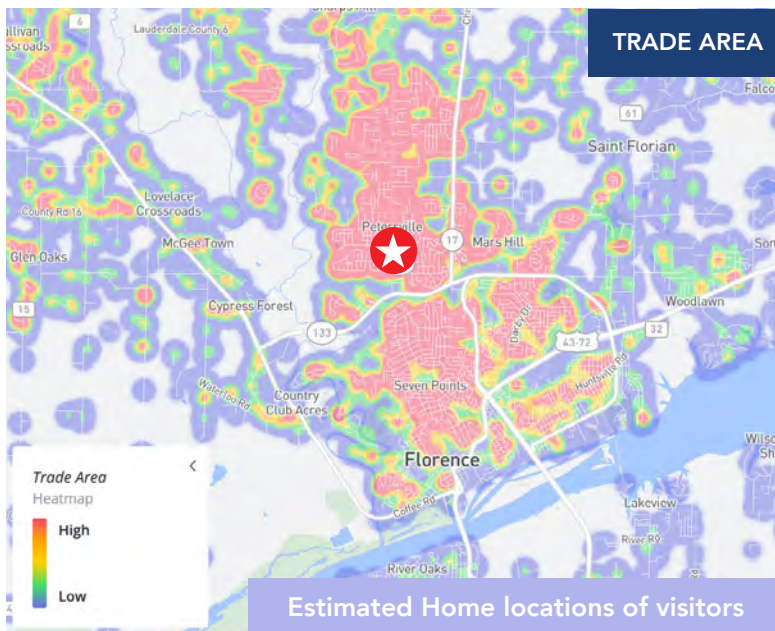
12 MONTH DEMOGRAPHICS WITHIN 1000 FT

Visits	977.6K
Visitors	114.5K
Visit Frequency	8.54x
Avg Dwell Time	36 minutes

977.6K
VISITS

\$87.3K+
AVG HH INCOME
WITHIN 1 MILE

114.5K
VISITORS



1,3,5 MILE DEMOGRAPHICS

POPULATION	1 MILE	3 MILES	5 MILES
2025 Estimated Population	5,024	32,865	50,081

HOUSEHOLDS	1 MILE	3 MILES	5 MILES
2025 Estimated Households	2,236	14,124	21,274

INCOME	1 MILE	3 MILES	5 MILES
2025 Estimated Average Household Income	\$87,343	\$75,268	\$73,720



CASEY HOWARD
choward@harbertrealty.com | 205.202.0814

LACEY SCOTT
lscott@harbertrealty.com | 205.401.1130

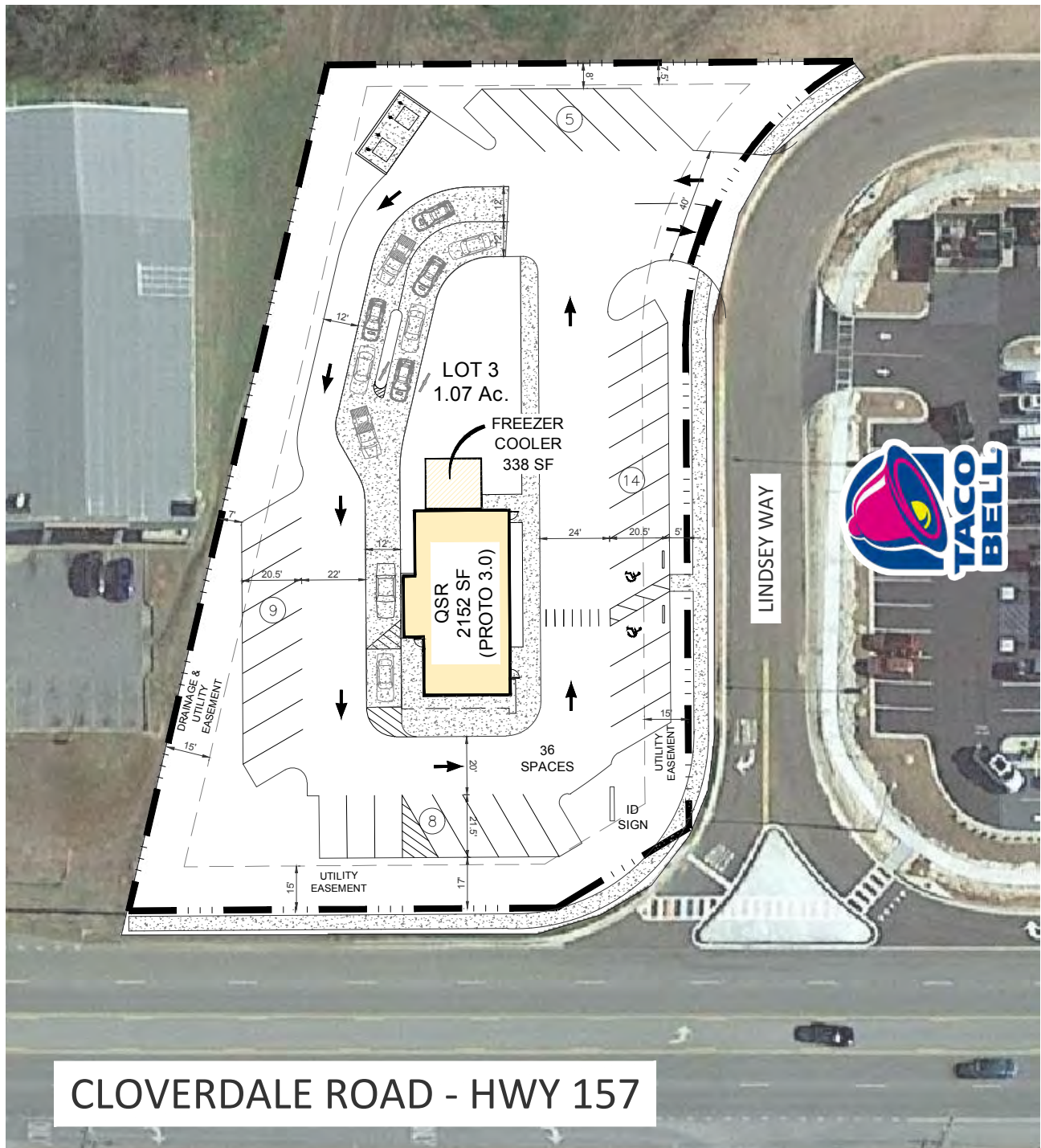
For More Information: Harbert-Retail.com
2 North 20th Street, #1700, Birmingham, AL 35203

The information contained herein has been obtained from sources deemed reliable, however, HRS makes no guarantees, warranties or representation as to its completeness or accuracy thereof. The presentation of this property is submitted subject to errors, omissions, change of price or conditions, prior to sale or lease or withdrawal without notice.

VACANT HWY 55 FOR SALE OR LEASE

3306 Cloverdale Rd, Florence, AL 35633

Stand-alone Former Hwy 55 with Drive-Thru in High Traffic Location



CLOVERDALE ROAD - HWY 157

SITE PLAN



CASEY HOWARD
choward@harbertrealty.com | 205.202.0814

LACEY SCOTT
lscott@harbertrealty.com | 205.401.1130

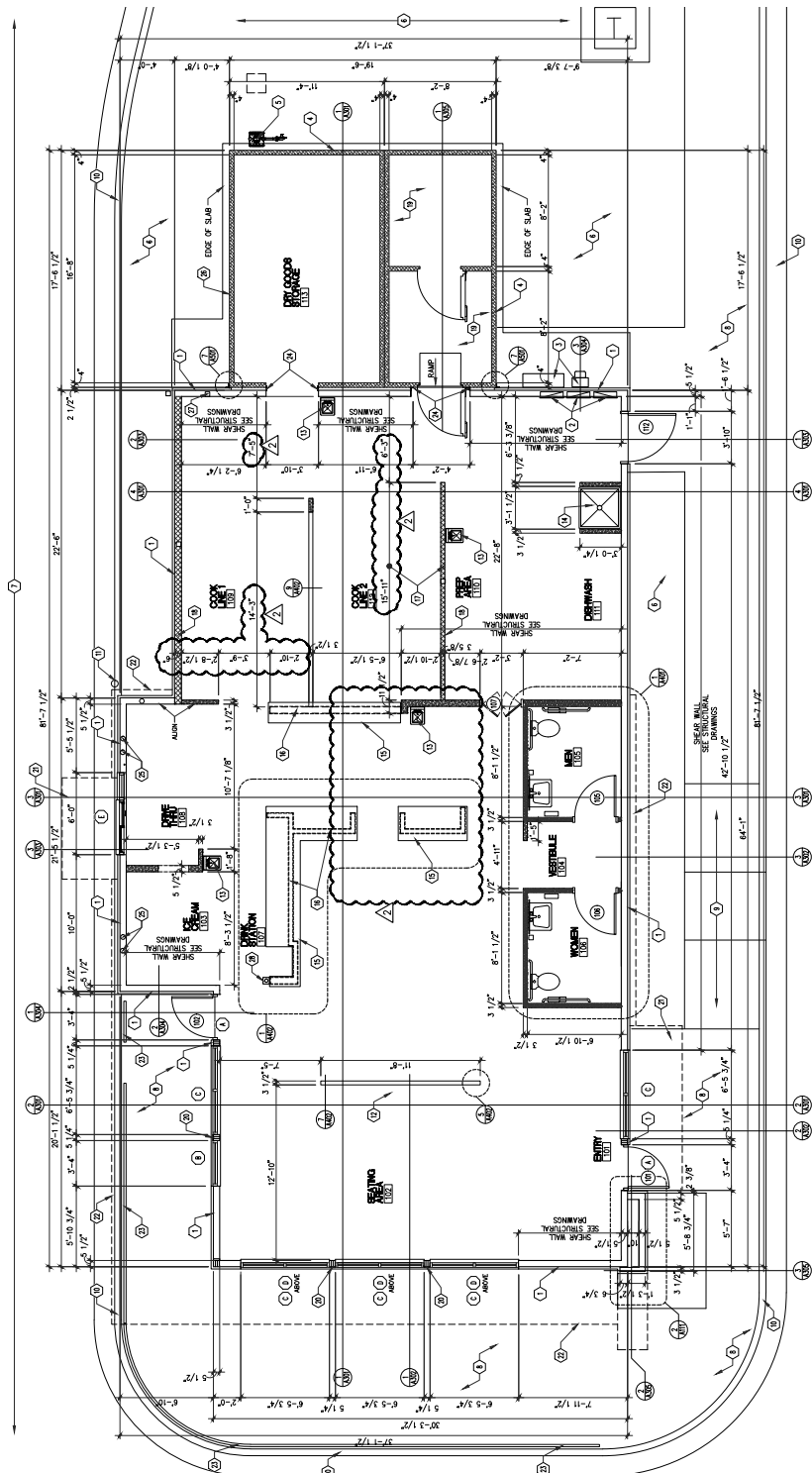
For More Information: Harbert-Retail.com
2 North 20th Street, #1700, Birmingham, AL 35203

The information contained herein has been obtained from sources deemed reliable, however, HRS makes no guarantees, warranties or representation as to its completeness or accuracy thereof. The presentation of this property is submitted subject to errors, omissions, change of price or conditions, prior to sale or lease or withdrawal without notice.

VACANT HWY 55 FOR SALE OR LEASE

3306 Cloverdale Rd, Florence, AL 35633

Stand-alone Former Hwy 55 with Drive-Thru in High Traffic Location



BUILDING PLANS



HARBERT
RETAIL

CASEY HOWARD

choward@harbertrealty.com | 205.202.0814

LACEY SCOTT

lscott@harbertrealty.com | 205.401.1130

For More Information: Harbert-Retail.com

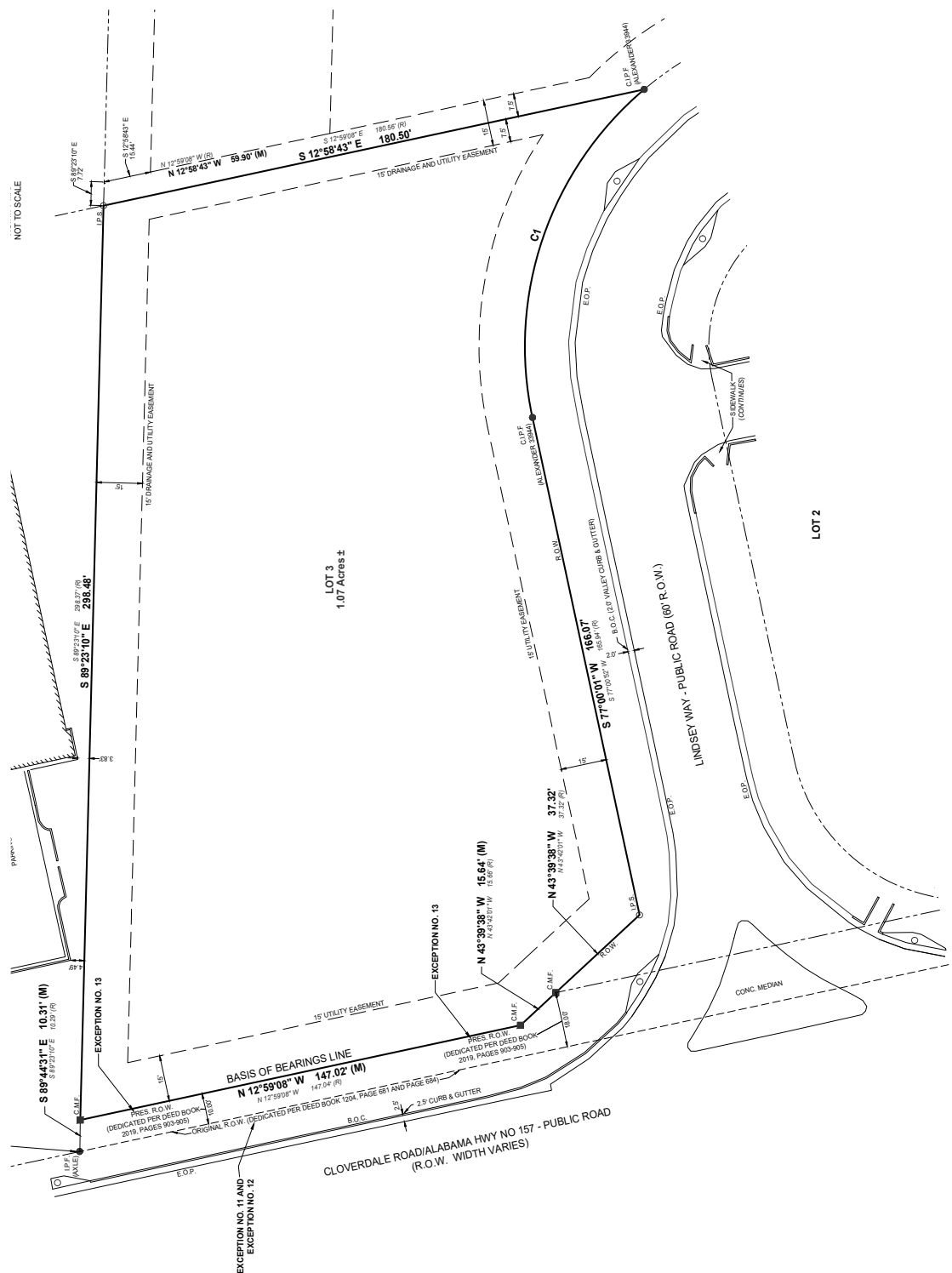
2 North 20th Street, #1700, Birmingham, AL 35203

The information contained herein has been obtained from sources deemed reliable, however, HRS makes no guarantees, warranties or representation as to its completeness or accuracy thereof. The presentation of this property is submitted subject to errors, omissions, change of price or conditions, prior to sale or lease or withdrawal without notice.

VACANT HWY 55 FOR SALE OR LEASE

3306 Cloverdale Rd, Florence, AL 35633

Stand-alone Former Hwy 55 with Drive-Thru in High Traffic Location



SITE SURVEY

CASEY HOWARD

choward@harbertrealty.com | 205.202.0814

LACEY SCOTT

lscott@harbertrealty.com | 205.401.1130

For More Information: Harbert-Retail.com

2 North 20th Street, #1700, Birmingham, AL 35203



The information contained herein has been obtained from sources deemed reliable, however, HRS makes no guarantees, warranties or representation as to its completeness or accuracy thereof. The presentation of this property is submitted subject to errors, omissions, change of price or conditions, prior to sale or lease or withdrawal without notice.