

WHITE PLAINS, NY

925 Westchester Avenue



Superb Location!

Features

- High quality offices are surrounded by a beautiful parkland
- Situated close to downtown White Plains and convenient to NY, NJ and CT
- Cafeteria located within complex
- Fitness facility with showers and locker rooms within building
- Conference facility within the building
- Abundant surface parking
- Operable windows

Specifications

Size:	Partial 1 st floor	1,500 RSF
	Partial 2 nd floor	1,465 RSF
	Partial 4 th floor	3,038 RSF

Rent: \$28/SF + electric

Availability: Immediate

Term: 5 – 10 years

For information, please contact:

Glenn P. Walsh

t 914-881-1096 glenn.walsh@nmrk.com

Lawrence A. Ruggieri

t 914.881.1025 larry.ruggieri@nmrk.com

RPW GROUP INC.

NEWMARK

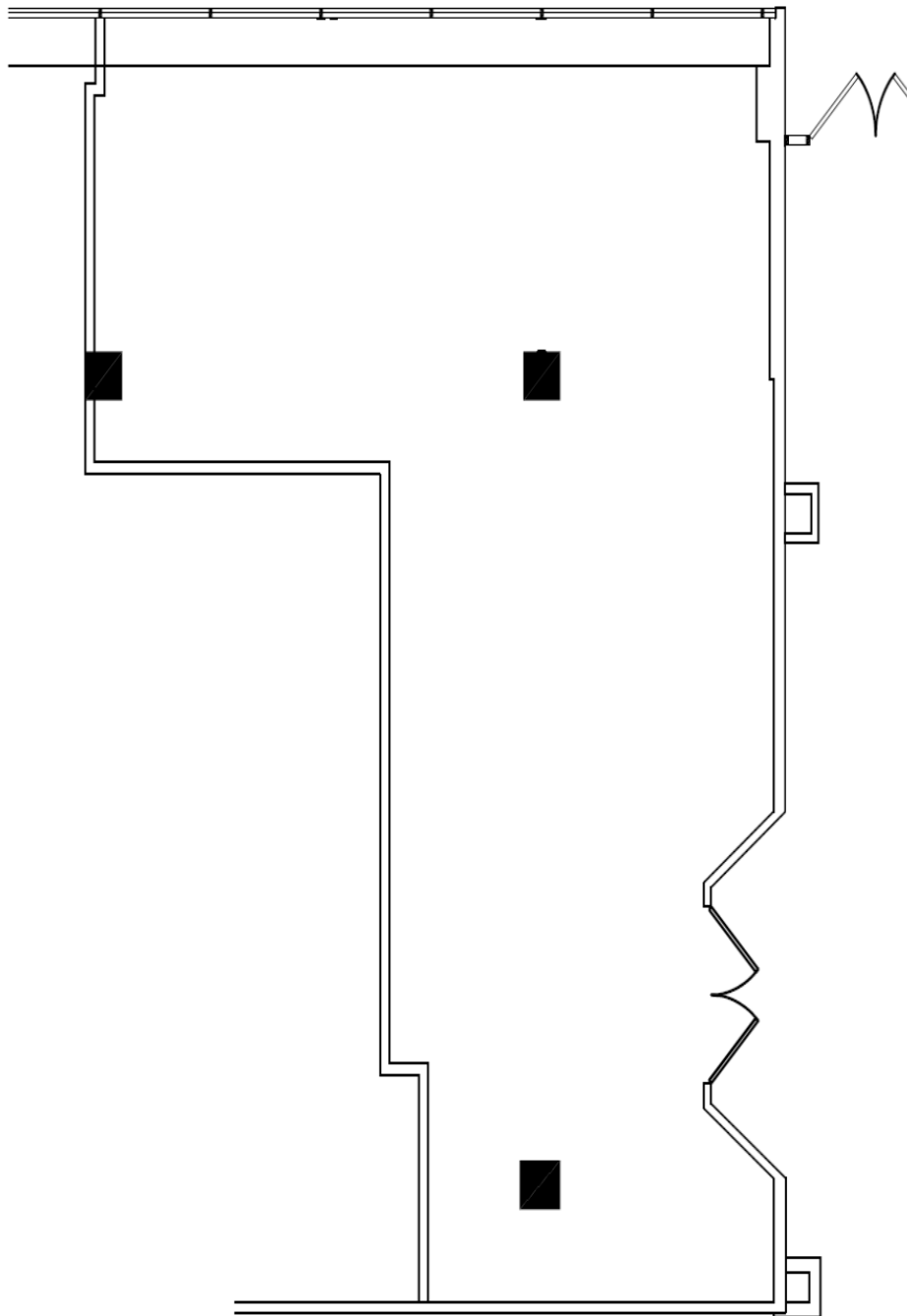
800 Westchester Avenue, Suite S-706, Rye Brook, NY 10573 | nmrk.com

The information contained herein has been obtained from sources deemed reliable but has not been verified and no guarantee, warranty or representation, either express or implied, is made with respect to such information. Terms of sale or lease and availability are subject to change or withdrawal without notice.

FLOOR PLAN

925 Westchester Avenue

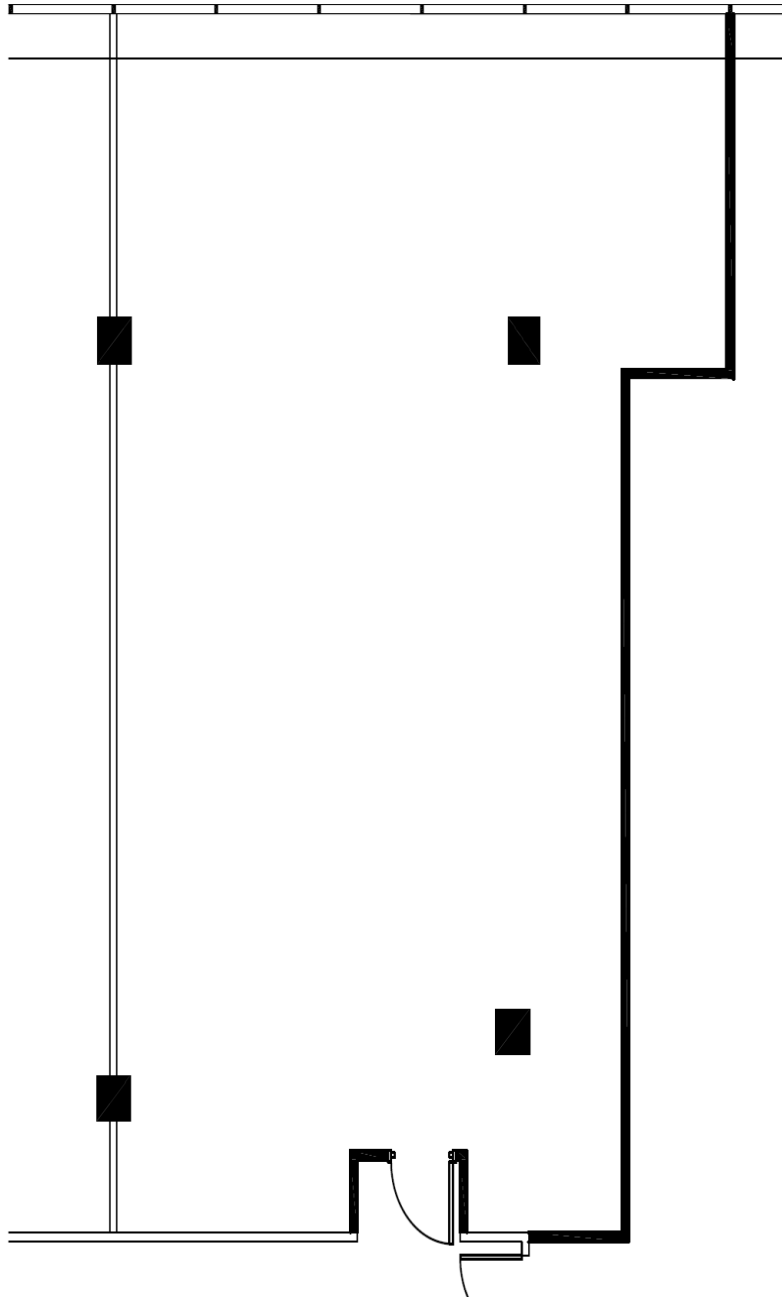
First Floor – 1,500 RSF



FLOOR PLAN

925 Westchester Avenue

Second Floor – 1,465 RSF



FLOOR PLAN

925 Westchester Avenue

Fourth Floor – 3,038 RSF

