

215

MADISON AVENUE

Corner of 36th Street | Midtown East



215

MADISON AVENUE

Corner of 36th Street | Midtown East

PROPERTY HIGHLIGHTS

- Fully built out medical office
- Excellent corner visibility in high foot traffic area
- Prime Madison Avenue location
- Neighbors include: Starbucks, CVS, NY Vein Center, Slattery's Midtown Pub, CUNY Graduate Center, Pret, Banana Republic, Foot Locker, Zumiez, Barn Joo 35, Tacombi, The Playwright Irish Pub, Legends, Tiberias, Zara, Levi's, ETC Eatery, 5th & Mad, Reichenbach Hall, Rico Bagel, Serafina, The Morgan Library & Museum, Wolfgang's, Dunkin', FedEx Office, The Ginger Man

SIZE 2,455 SF Ground Floor

FRONTAGE 30'

CEILING HEIGHTS 10+ Feet

POSSESSION Immediate

ASKING RENT Upon Request

TRANSPORTATION B D F M N Q R W 6

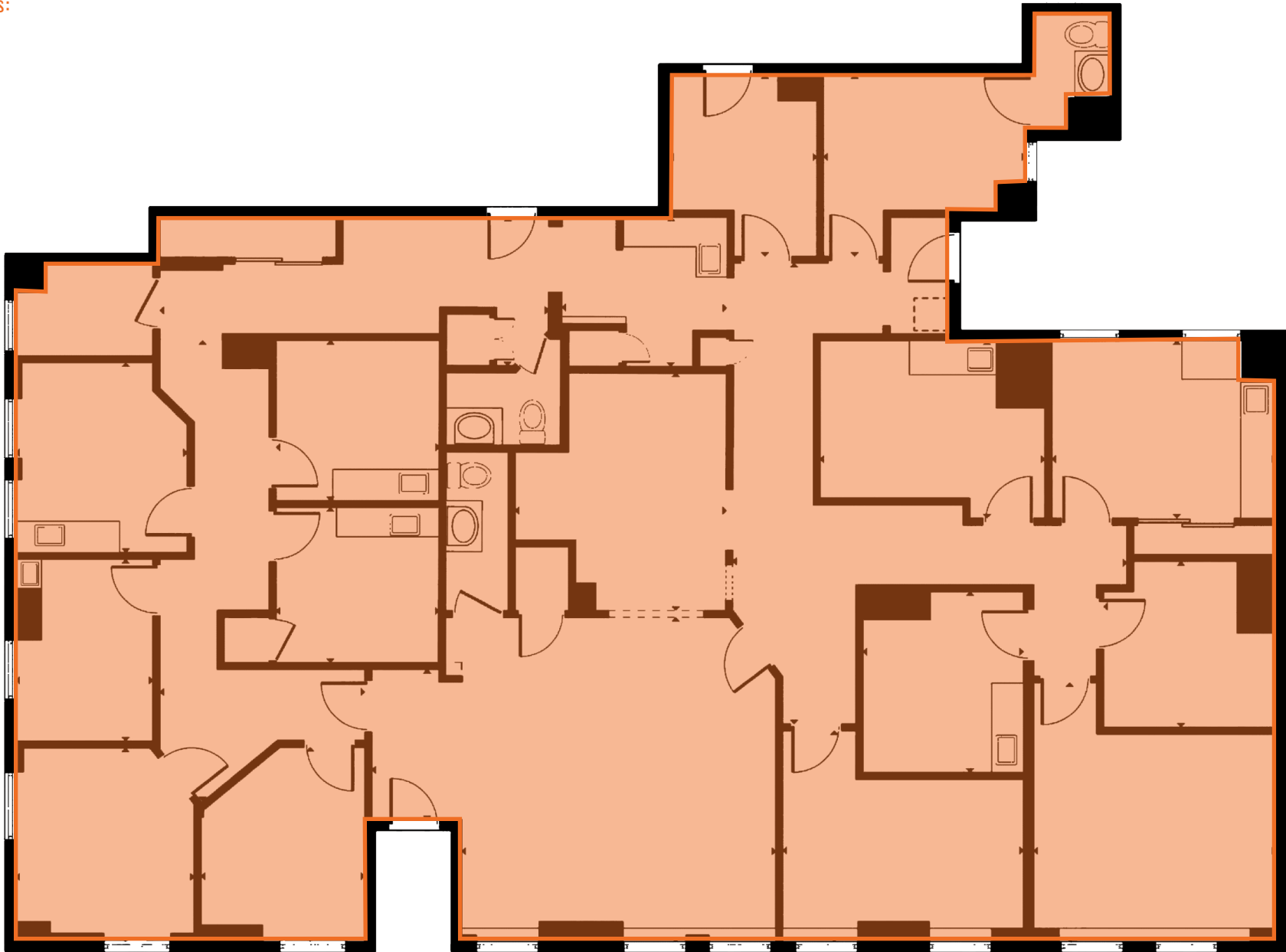


215

MADISON AVENUE

Corner of 36th Street | Midtown East

Floor Plans:



215

MADISON AVENUE

Corner of 36th Street | Midtown East

FOR MORE INFORMATION,
PLEASE CONTACT:

JOSH BERKUN

516.459.9251

JBerkun@ksrny.com

NOLAN WEINBERG

516.581.0203

NWeinberg@ksrny.com

JEFF GEOGHEGAN

212.945.8984

JeffG@ksrny.com



1385 Broadway, 22nd Floor | New York, NY 10018

212.417.9217

ksrny.com

All information supplied in this marketing presentation and/or flyer is from sources deemed reliable and is furnished subject to errors, omissions, modifications, removal of listings from sale/lease and to any listing condition. Any square footage, dimensions, floor plans and/or technical data set forth are approximations and are subject to further elaboration/confirmation.