

**75 Onderdonk Ave -  
border of East Williamsburg and Maspeth**

**Last Mile Industrial Building  
with Air Rights / M3-1 / 2.0 FAR**

**66,000 SF Building for Sale or Lease**

**20-30 Mins to MidTown Manhattan  
25-35 Mins to Long Island  
30-40 Mins to JFK Airport  
35-45 Mins to Westchester  
45-50 Mins to New Jersey**



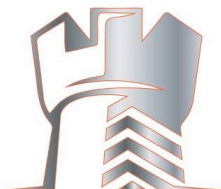
**BLDG. DETAILS:**

Block: 3393 Lot: 179  
Lot Dimensions: 242' x 259'  
Lot SF: 63,554 SF  
Bldg Dimensions: 242' x 235'  
Building Size: 66,000 SF  
Ground Fl: Apprx 63,000 SF  
2nd Fl: Apprx 3,000 SF  
M3-1 Zone / 2.0 FAR  
Natural light / Floor Drains  
Ceiling 16.6' - 17.6'  
Full Sprinkler System  
5,000+ amps of power  
NY & Atlantic Railway for Freight  
5 Docks & 1 Drive In Door  
Taxes \$128,376

**OVER \$3,500,000 of  
BRAND NEW IMPROVEMENTS:**

New Roof / New Solar  
New Gas Heaters  
New Loading Docks  
New Electrical  
Nee LED Lights  
New 10,000 SF Ground Floor Showroom  
New Bathrooms and Kitchens  
New Windows  
New Offices  
New HVAC  
New Security / Alarm

**For Price & Tours Please Contact:  
EXCLUSIVE BROKER  
Jaffe Realty, LLC  
Brian Jaffe  
718-216-6626  
[Brian@Jaffe-Realty.com](mailto:Brian@Jaffe-Realty.com)**



**JAFFE REALTY**  
INDUSTRIAL - COMMERCIAL

23-68 48th St., Astoria NY Phone (347)  
730-5499 Cell (718) 216-6626

Although all information is from sources deemed reliable, and no representation is made as to the accuracy thereof, it is submitted subject to errors, omissions, changes of price, prior sale, or withdrawal without notice.













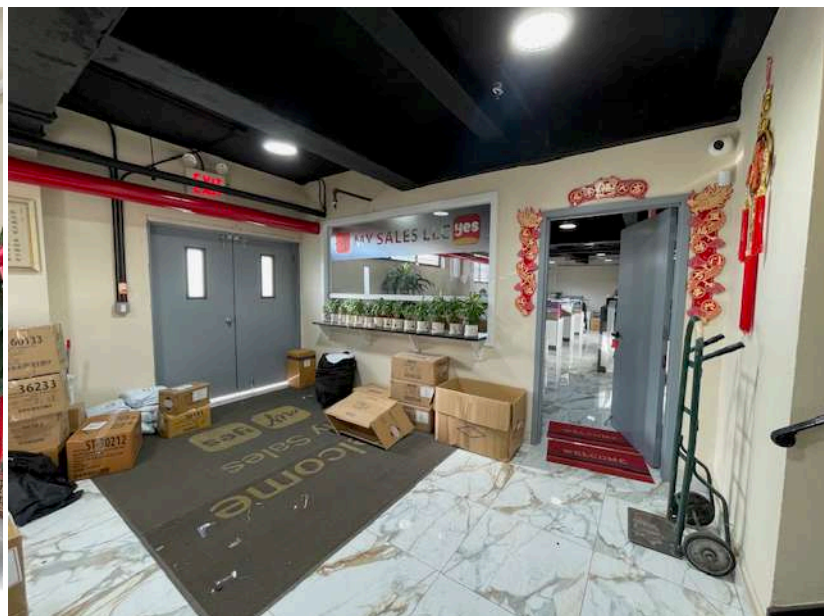




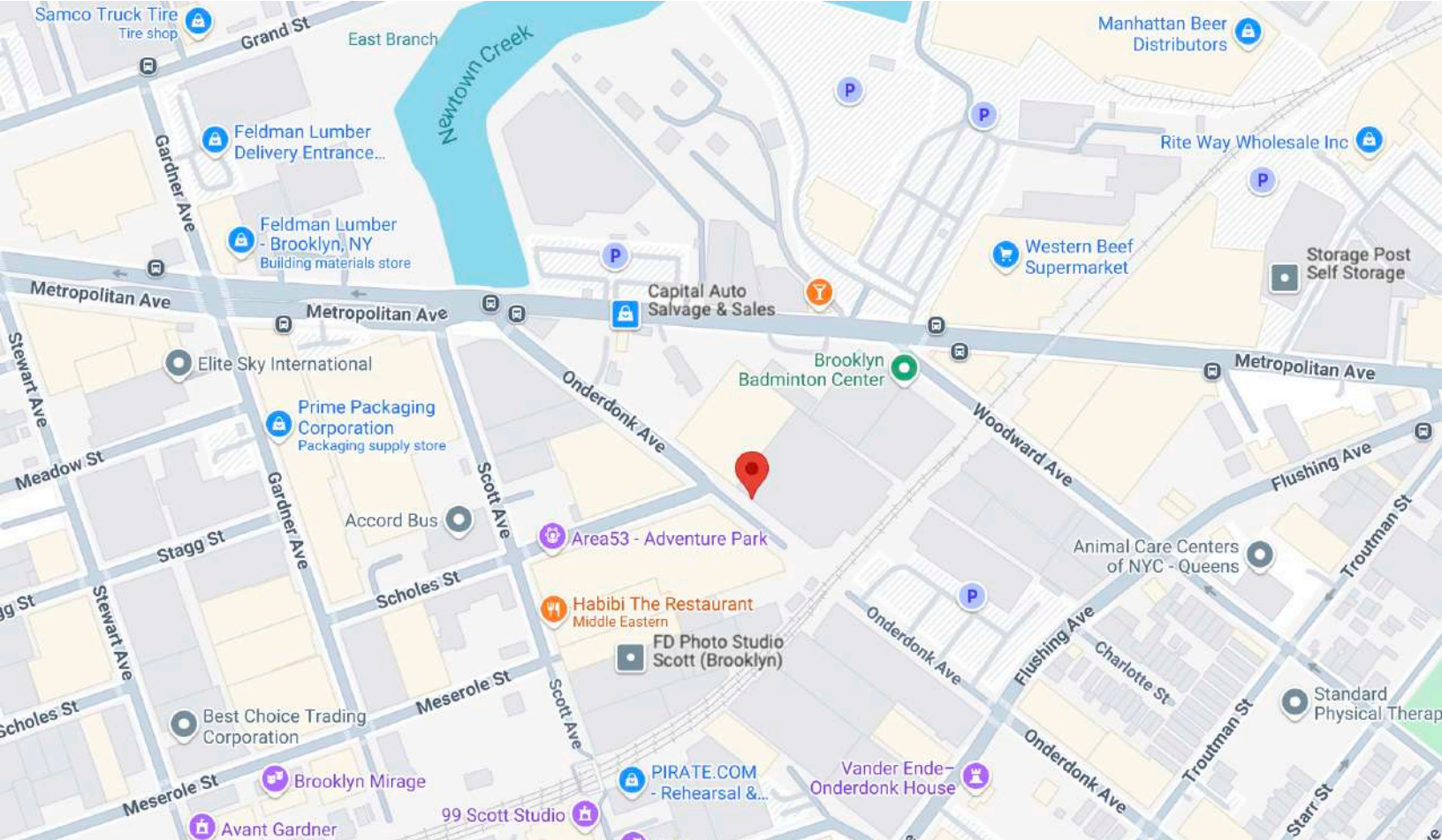
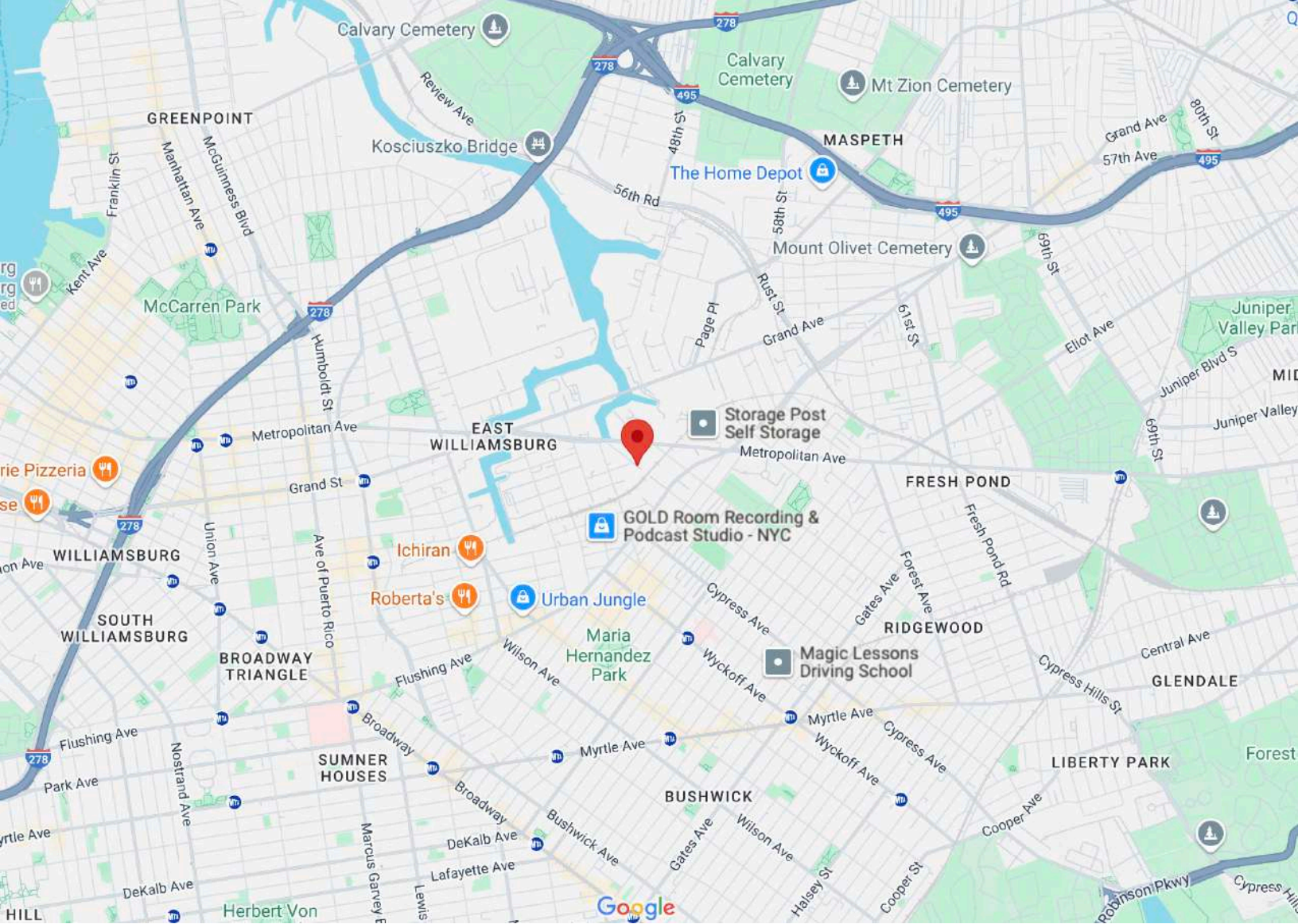




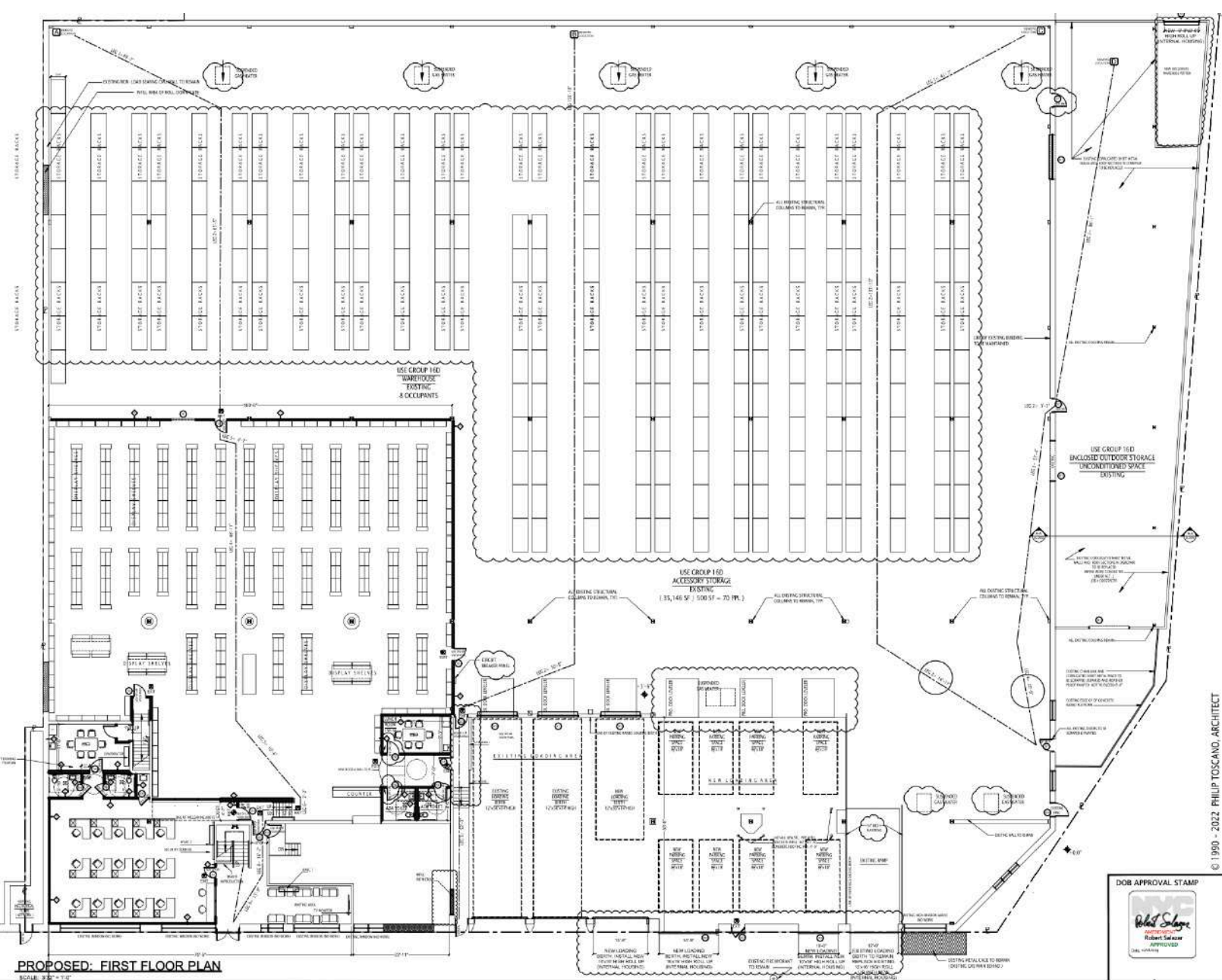




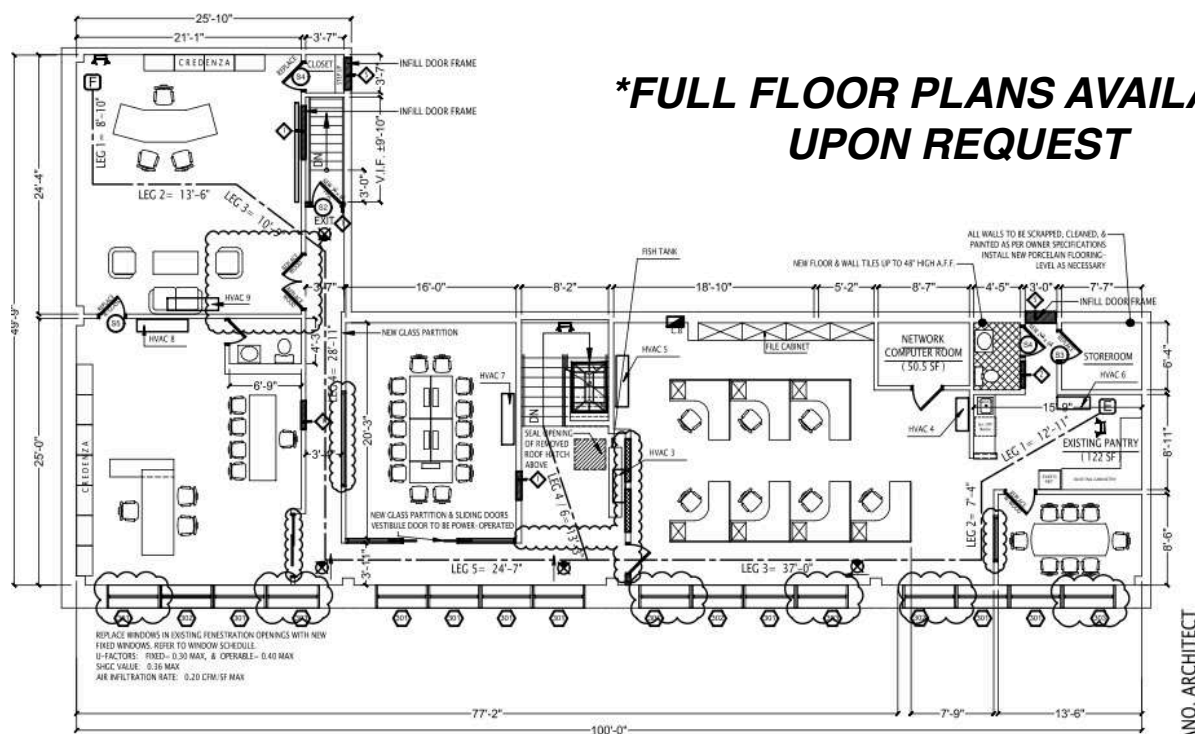








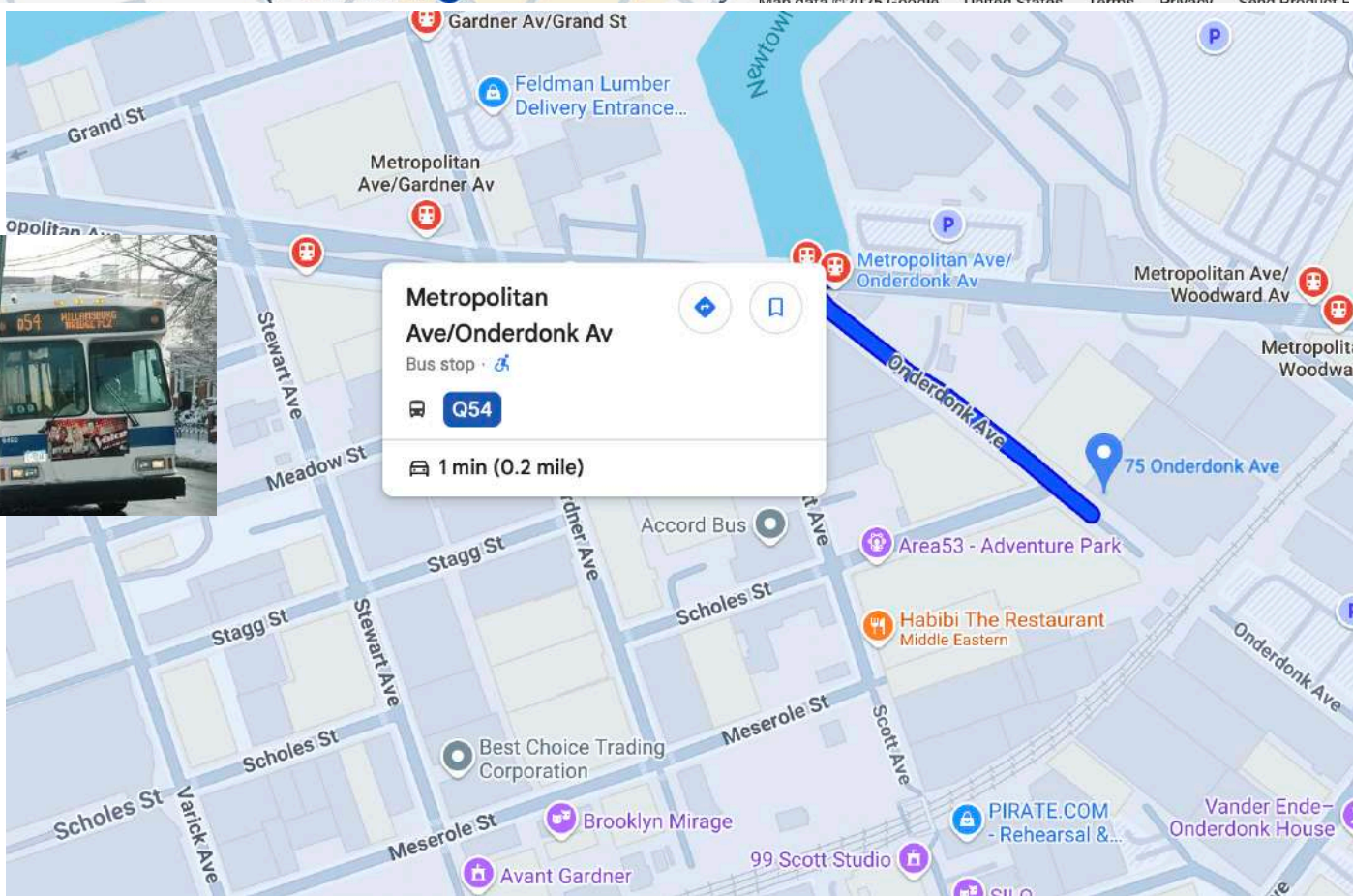
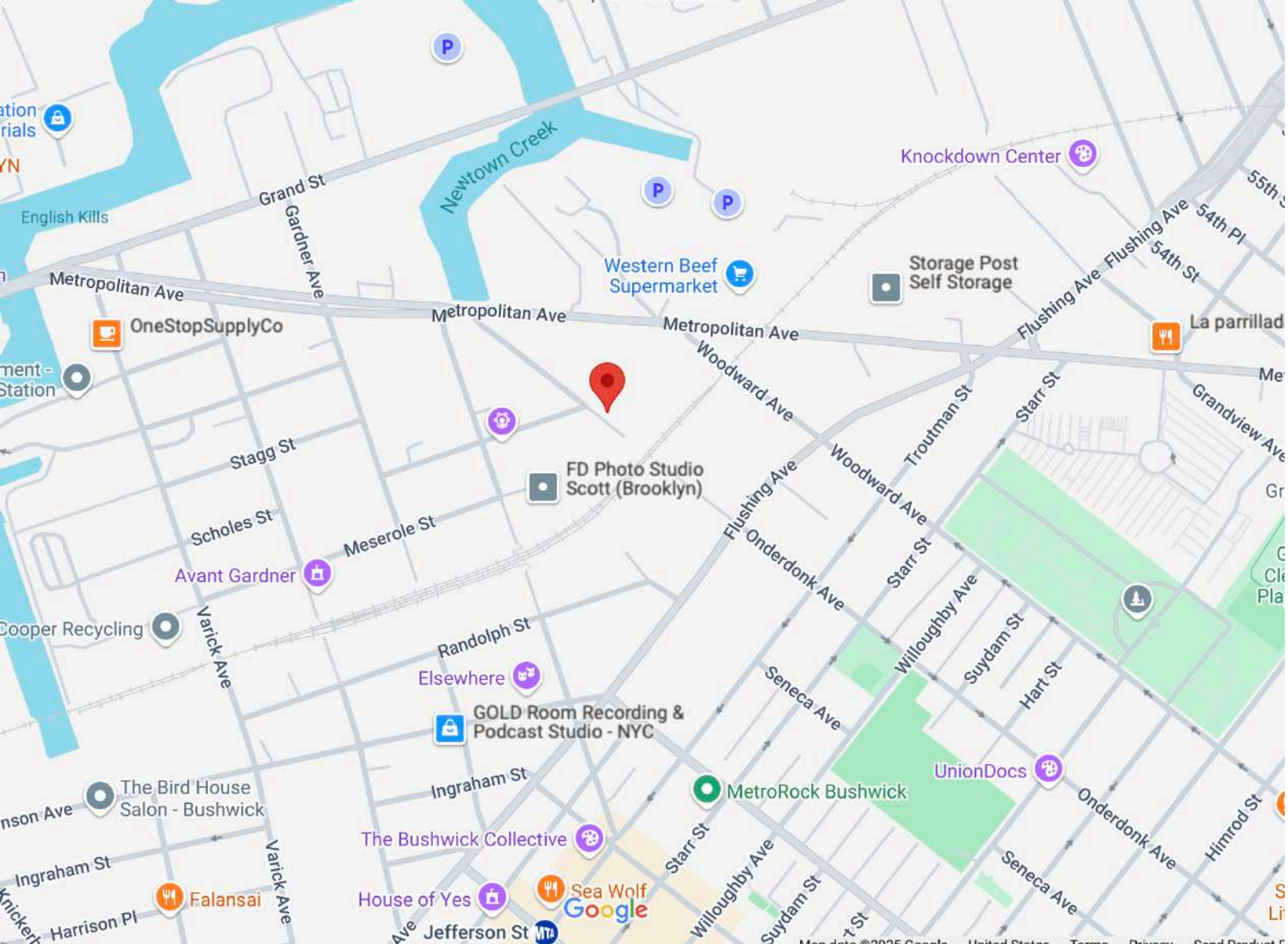
© 1990 - 2022 PHILIP TOSCANO, ARCHITECT



J.P. TOSCANO, ARCHITECT

**\*FULL FLOOR PLANS AVAILABLE UPON REQUEST**





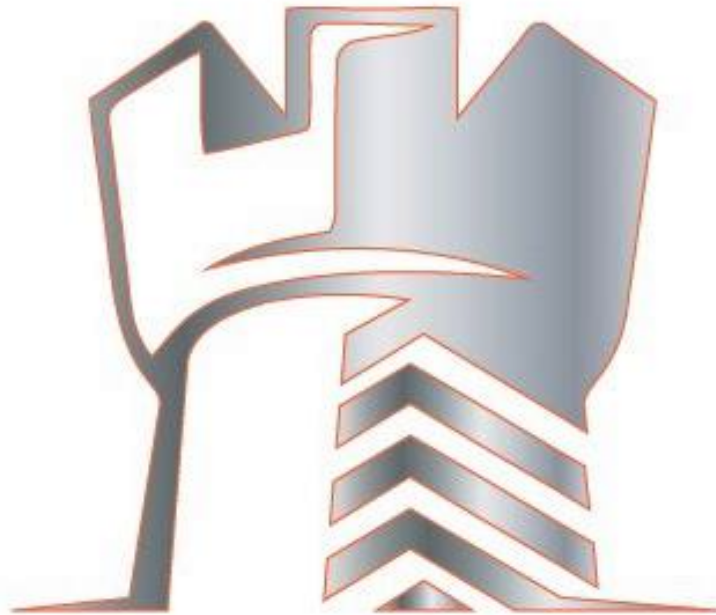
**Metropolitan Ave/Onderdonk Av**  
Bus stop · [📍](#)

**Q54**

1 min (0.2 mile)



**FOR SALE OR LEASE**  
**For Price & Tours Please Contact:**  
**EXCLUSIVE BROKER**  
**Jaffe Realty, LLC**  
**Brian Jaffe**  
**718-216-6626**  
**[Brian@Jaffe-Realty.com](mailto:Brian@Jaffe-Realty.com)**



**JAFFE REALTY**  
— INDUSTRIAL - COMMERCIAL —