



Premiere Lake Lanier Lots

Property Description

These properties present a unique opportunities for a family compound, corporate retreat, or multi-lot lake development. Each lot features stunning lake frontage and picturesque lake views. The property is conveniently located within 5 miles of a recently built Kroger, a new Chick-fil-A, various restaurants, shops, and Georgia's top-rated hospital and healthcare facilities at Northeast Georgia Medical Center. Offering both convenience and privacy, this property is truly exceptional.

Situated along a secluded stretch of Lake Lanier on the Chattahoochee River, the property offers a serene atmosphere with easy access to Don Carter State Park via a short boat ride. Additionally, it is just minutes away from the Atlanta Botanical Gardens in Gainesville and the Olympic Rowing Venue. This area is renowned for providing the best skiing and rowing experiences on the lake.

Get more information

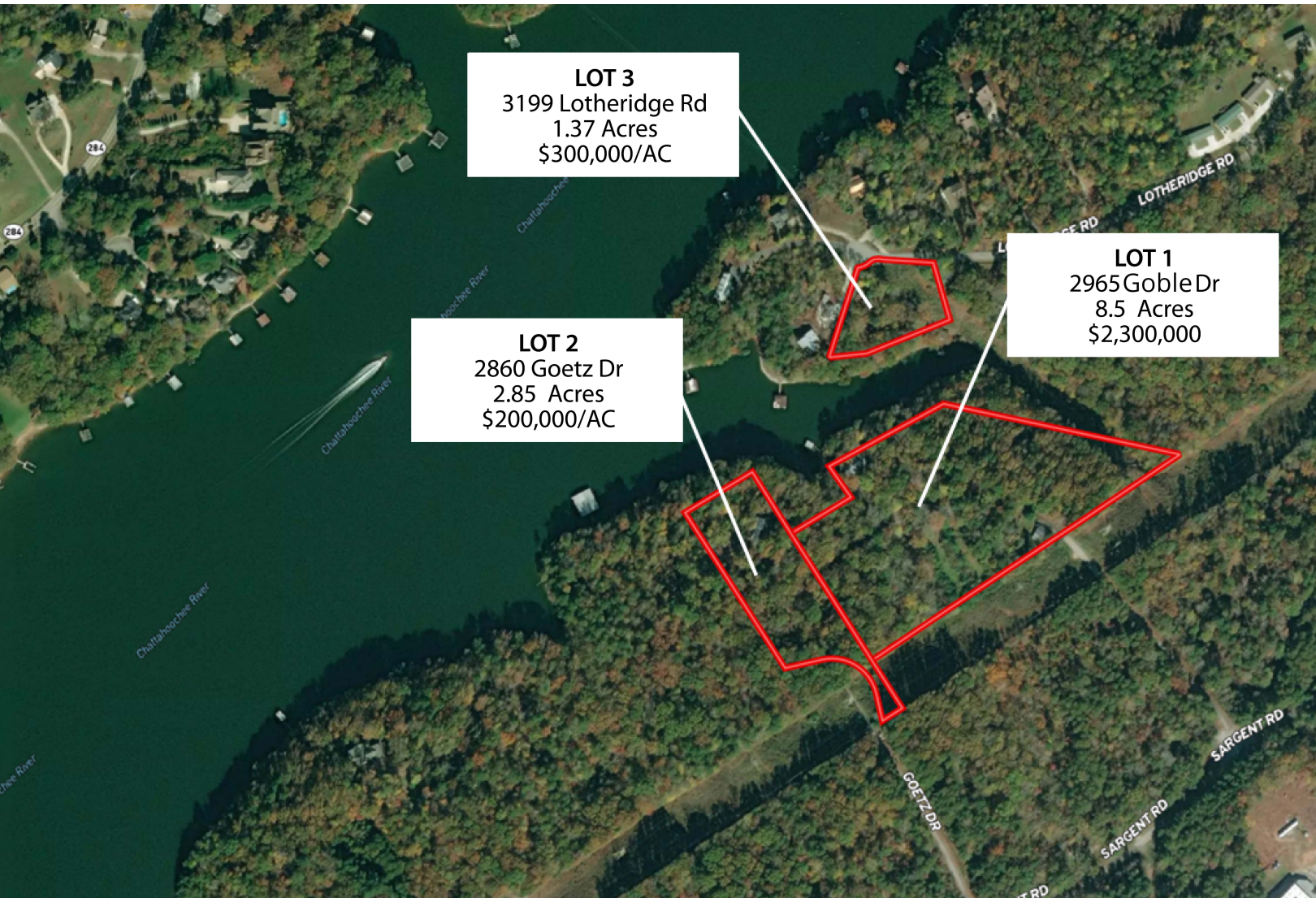
Frank N. Simpson, CCIM SIOR

Principal, Managing Director
D 770 532 9911
C 770 654 2300
frank.simpson@avisonyoung.com

Sam B. Simpson

Senior Associate
D 770 532 9911
C 770 654 0062
sam.simpson@avisonyoung.com

Land for sale



LOT 3
3199 Lotheridge Rd
1.37 Acres
\$300,000/AC

LOT 1
2965 Goble Dr
8.5 Acres
\$2,300,000

LOT 2
2860 Goetz Dr
2.85 Acres
\$200,000/AC

Status	Lot #	APN	Sub-Type	Size	Price	Description
Available	1	09110 000006	Residential	8.5 Acres	\$2,300,000	Dock: Yes
Available	2	09110 000008	Residential	2.85 Acres	\$200,000 / Acre	Dock: No
Available	3	09110 000029	Residential	1.37 Acres	\$300,000 / Acre	Dock: Permit in Place

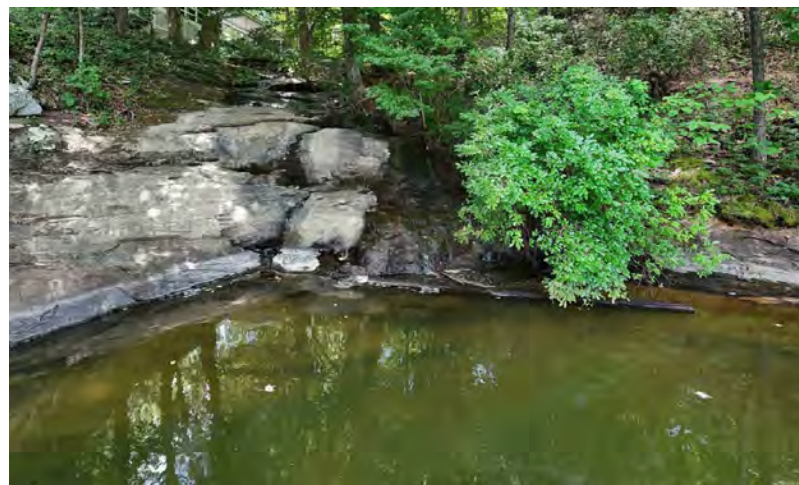
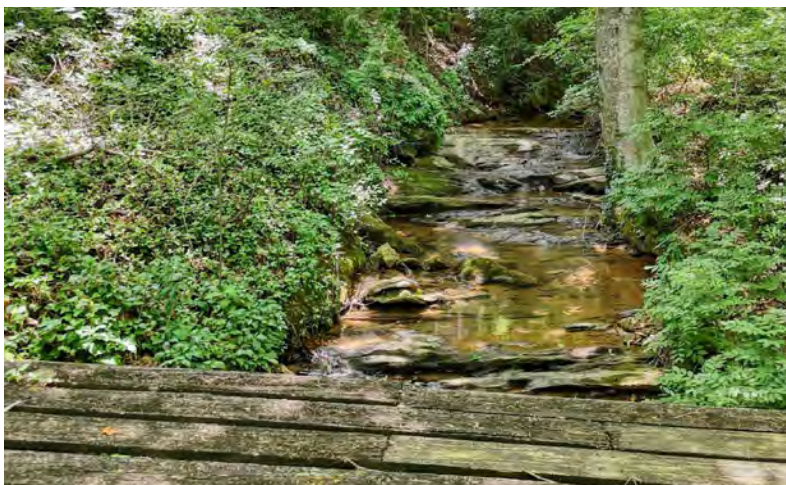


Frank N. Simpson, CCIM SIOR
Principal, Managing Director
D 770 532 9911
C 770 654 2300
frank.simpson@avisonyoung.com

Sam B. Simpson
Senior Associate
D 770 532 9911
C 770 654 0062
sam.simpson@avisonyoung.com

2965 Goble Dr

2965 Goble Dr



Frank N. Simpson, CCIM SIOR
Principal, Managing Director
D 770 532 9911
C 770 654 2300
frank.simpson@avisonyoung.com

Sam B. Simpson
Senior Associate
D 770 532 9911
C 770 654 0062
sam.simpson@avisonyoung.com

Avison Young - Gainesville | 425 Spring Street SE, Suite 200 | Gainesville, GA 30501

© 2024. Avison Young - Gainesville. Information contained herein was obtained from sources deemed reliable and, while thought to be correct, have not been verified. Avison Young - Gainesville does not guarantee the accuracy or completeness of the information presented, nor assumes any responsibility or liability for any errors or omissions therein.

2860 Goetz Dr

2860 Goetz Dr



**AVISON
YOUNG**

Frank N. Simpson, CCIM SIOR

Principal, Managing Director

D 770 532 9911

C 770 654 2300

frank.simpson@avisonyoung.com

Sam B. Simpson

Senior Associate

D 770 532 9911

C 770 654 0062

sam.simpson@avisonyoung.com

Avison Young - Gainesville | 425 Spring Street SE, Suite 200 | Gainesville, GA 30501

© 2024, Avison Young - Gainesville. Information contained herein was obtained from sources deemed reliable and, while thought to be correct, have not been verified. Avison Young - Gainesville does not guarantee the accuracy or completeness of the information presented, nor assumes any responsibility or liability for any errors or omissions therein.

3199 Lotheridge Rd

3199 Lotheridge Rd



**AVISON
YOUNG**

Frank N. Simpson, CCIM SIOR
Principal, Managing Director
D 770 532 9911
C 770 654 2300
frank.simpson@avisonyoung.com

Sam B. Simpson
Senior Associate
D 770 532 9911
C 770 654 0062
sam.simpson@avisonyoung.com

Avison Young - Gainesville | 425 Spring Street SE, Suite 200 | Gainesville, GA 30501

© 2024. Avison Young - Gainesville. Information contained herein was obtained from sources deemed reliable and, while thought to be correct, have not been verified. Avison Young - Gainesville does not guarantee the accuracy or completeness of the information presented, nor assumes any responsibility or liability for any errors or omissions therein.

Gainesville Submarket Overview



Area Description

The City of Gainesville is located in Northeast Georgia, approximately 50 miles north-east of Atlanta. Gainesville is the principal city and county seat of Hall County. Bordered on the west by Lake Sidney Lanier, Hall County lies at the southern edge of the Chattahoochee National Forest and the foothills of the Blue Ridge Mountains.

As the regional employment center for Northeast Georgia, Gainesville-Hall County holds the distinction of being rated by Forbes Magazine as a "Best Small Places for Business and Careers". Known as the Queen City of the Mountains and the Poultry Capital, Gainesville's most recent designation as "Hospitality Capital of the World" came when Gainesville hosted the 1996 Olympic rowing/kayaking events.

Gainesville, Georgia is the tourism and economic center of Northeast Georgia. The Gainesville community continues to see impressive growth in both manufacturing and retail sectors. Approximately 45 international firms operate in the community, and Gainesville-Hall County serves as the international headquarters for many of these companies. Business growth opportunities abound; expanding and new industry have a number of developing business parks to choose from. Gainesville-Hall County's designation as a leading Food and Agribusiness employer continues in 2020. Hall County's poultry and manufacturing sectors have by far the highest economic impact in the state. In addition to the aforementioned robust business activity, Gainesville-Hall County holds the privilege of being the medical nucleus for the 14-county Northeast Georgia area with its top-ranked hospital, Northeast Georgia Medical Center (NEGMC), and a number of highly-recognized physician group practices.



Frank N. Simpson, CCIM SIOR

Principal, Managing Director

D 770 532 9911

C 770 654 2300

frank.simpson@avisonyoung.com

Sam B. Simpson

Senior Associate

D 770 532 9911

C 770 654 0062

sam.simpson@avisonyoung.com

Let's talk.

Frank N. Simpson, CCIM SIOR

Principal, Managing Director

D 770 532 9911

C 770 654 2300

frank.simpson@avisonyoung.com

Sam B. Simpson

Senior Associate

D 770 532 9911

C 770 654 0062

sam.simpson@avisonyoung.com

Avison Young - Gainesville

425 Spring Street SE, Suite 200 | Gainesville, GA 30501

© 2024. Avison Young - Gainesville. Information contained herein was obtained from sources deemed reliable and, while thought to be correct, have not been verified. Avison Young - Gainesville does not guarantee the accuracy or completeness of the information presented, nor assumes any responsibility or liability for any errors or omissions therein.

**AVISON
YOUNG**