

# LOTS FOR SALE

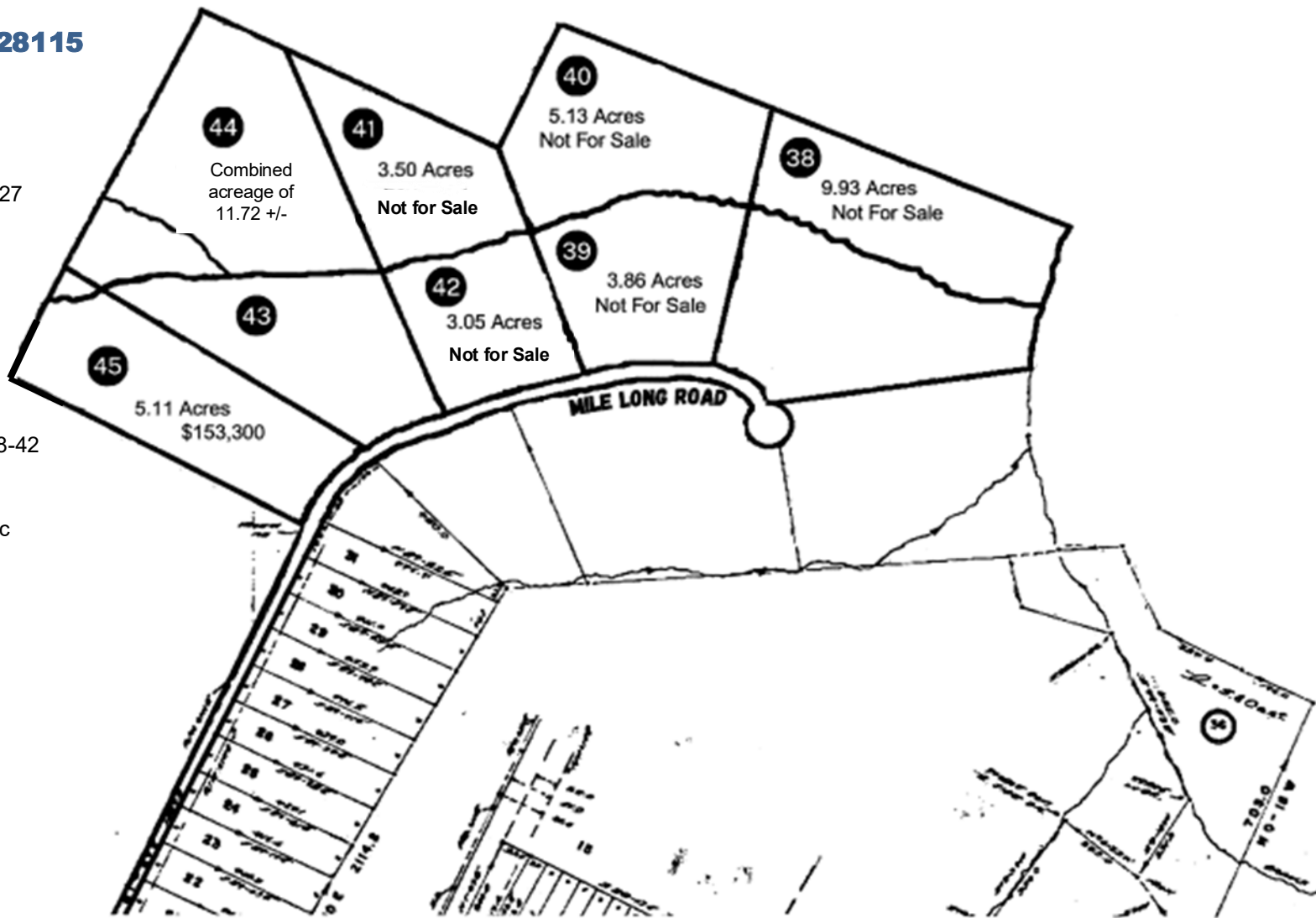
## Mile Long Road Mooreville, NC 28115 Rowan County

### 2 Lots Available

- Tax Parcel ID: 228A027
- Zoning: R-A
- Lot 43 & Lot 44
- Price: \$329,790
- Lot 45: \$153,300

**SOLD**

- Seller retaining lots 38-42
- No mobile homes
- Will need well & septic
- Fully wooded lots



### CONTACT

*All information regarding this property was obtained from sources deemed reliable but no warranty or representation is made of the accuracy thereof and the properties are subject to prior sale or lease or withdrawal.*

**Steve Knox**  
cell 704.400.2444  
steve@knoxgroupinc.com

**Michelle Polito**  
cell 704.995.4885  
michelle@knoxgroupinc.com

19725 Oak Street  
Suite 8  
Cornelius, NC 28031  
704.896.1911

 **The Knox Group**  
Commercial Real Estate

# Mile Long Road, Mooresville, NC 28115

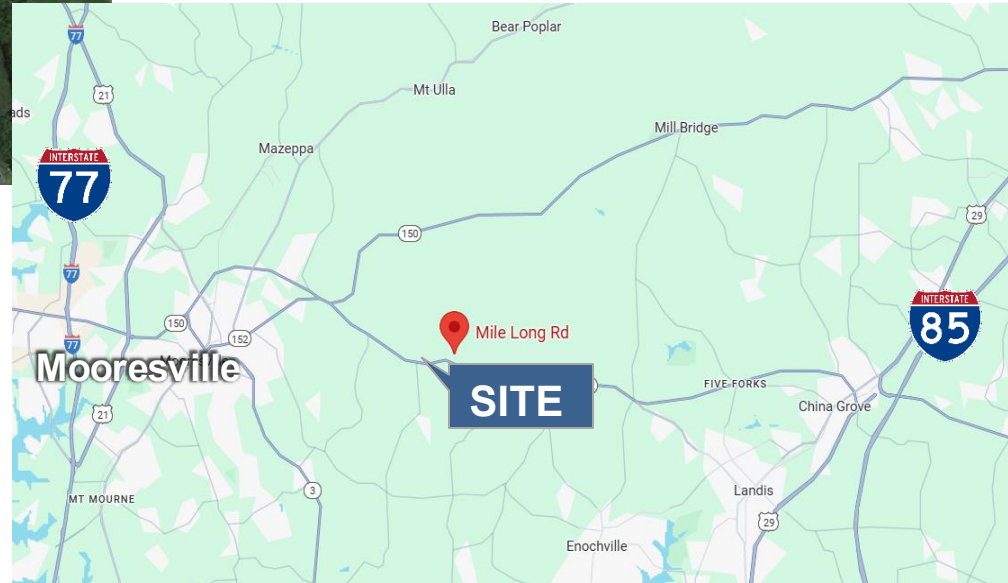


## Conveniently located:

- 5.8 miles from Downtown Mooresville
- 9.2 miles from I-77 exit 36
- 10 miles from Landis and I-85 access
- 10.4 miles from Downtown Kannapolis
- 12.8 miles from Davidson College

## Demographics

	1 mile	3 mile	5 mile
Population	110	2,096	9,991
Average Household Income	\$65,411	\$67,459	\$64,699



## CONTACT

All information regarding this property was obtained from sources deemed reliable but no warranty or representation is made of the accuracy thereof and the properties are subject to prior sale or lease or withdrawal.

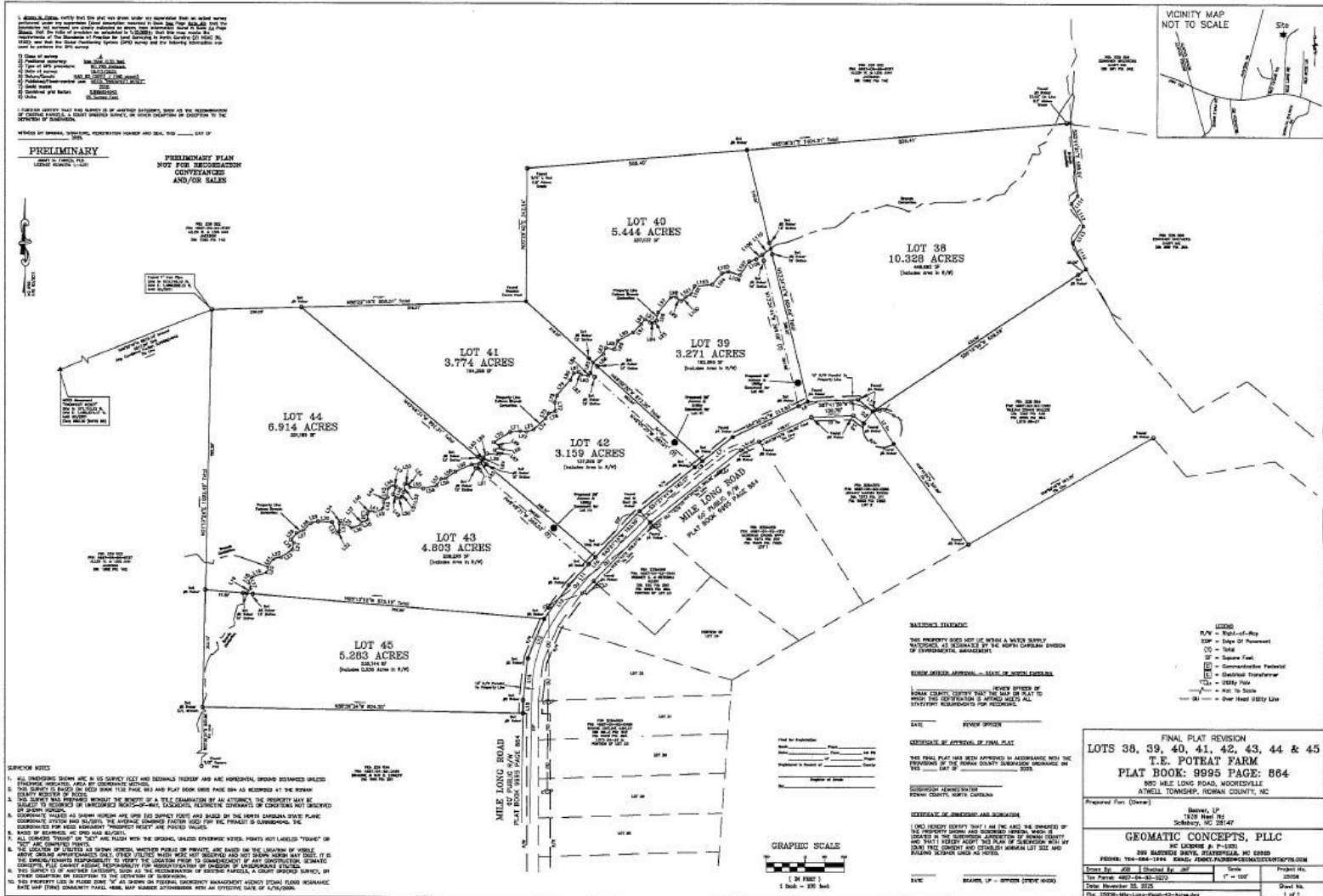
**Steve Knox**  
 cell 704.400.2444  
 steve@knoxgroupinc.com

**Michelle Polito**  
 cell 704.995.4885  
 michelle@knoxgroupinc.com

19725 Oak Street  
 Suite 8  
 Cornelius, NC 28031  
 704.896.1911



# Mile Long Road, Mooresville, NC 28115



## CONTACT

**Steve Knox**  
cell 704.400.2444  
steve@knoxgroupinc.com

**Michelle Polito**  
cell 704.995.4885  
michelle@knoxgroupinc.com

19725 Oak Street  
Suite 8  
Cornelius, NC 28031  
704.896.1911



All information regarding this property was obtained from sources deemed reliable but no warranty or representation is made of the accuracy thereof and the properties are subject to prior sale or lease or withdrawal.