

Thruway Office Building

290 Elwood Davis Rd, Liverpool, NY 13088

OFFICE SPACE AVAILABLE

1st Floor - 1,714 SF

2nd Floor - 870 SF - 3,518 SF

2nd Floor - 8,731 SF



Amenities

- Newly renovated common areas and bathrooms
- On-site property management
- Executive office suites available (starting at \$300 per month)
- On-site Cafe
- New 505 car parking lot
- Located right off of NYS Thruway Exit 37 Electronics Parkway
- Many amenities nearby including banks, restaurants and hotels
- FedEx and UPS Drop box available on-site
- Exterior signage available

For more information, or to schedule a tour, please contact:

Albert Giannino
Director of Leasing
315-200-1842
Albert.Giannino@pioneerco.com



333 West Washington Street
Suite 600
Syracuse, NY 13202
315-471-2181

Thruway Office Building

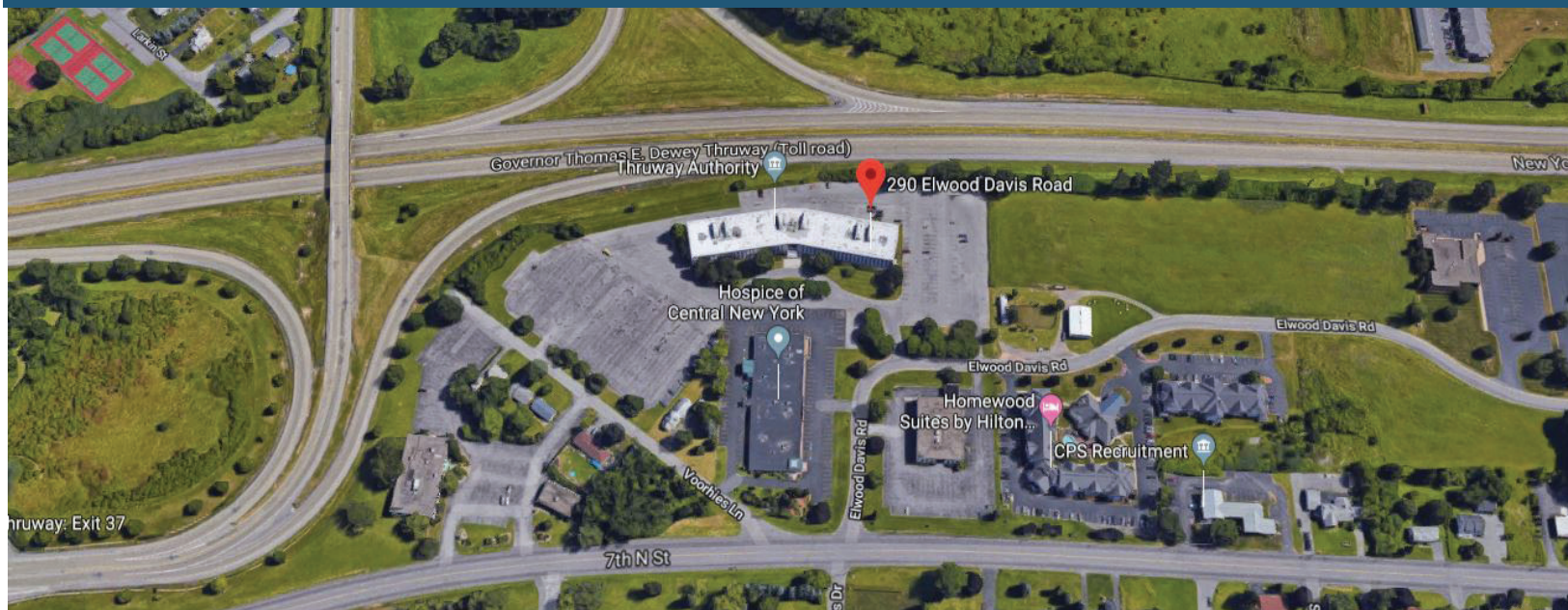
290 Elwood Davis Rd, Liverpool, NY 13088



EXECUTIVE OFFICE SUITES

100 - 250 SF

Starting at \$300 per month



For more information, or to schedule a tour, please contact:

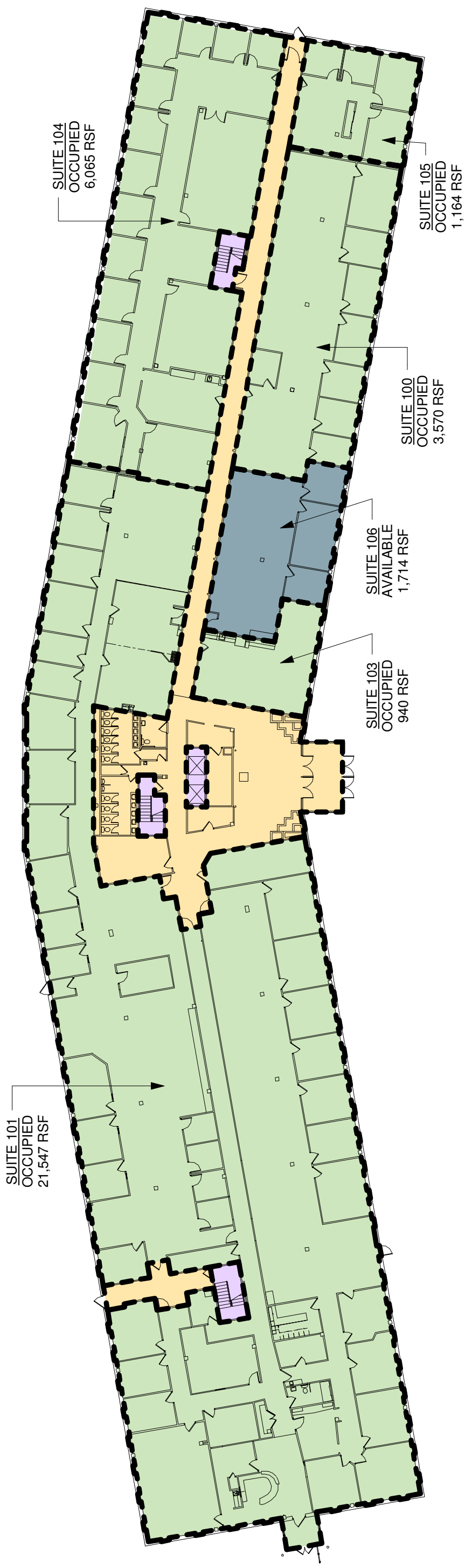
Albert Giannino
Director of Leasing
315-200-1842
Albert.Giannino@pioneercos.com



333 West Washington Street
Suite 600
Syracuse, NY 13202
315-471-2181

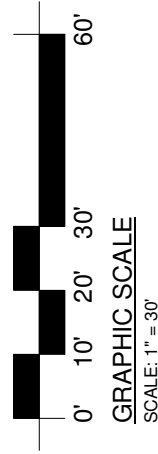
THRUWAY OFFICE BUILDING

290 Elwood Davis Road
Liverpool, NY 13088



KEY

-  OCCUPIED AREA
-  AVAILABLE AREA
-  BUILDING SERVICE AREA
-  MAJOR VERTICAL PENETRATIONS



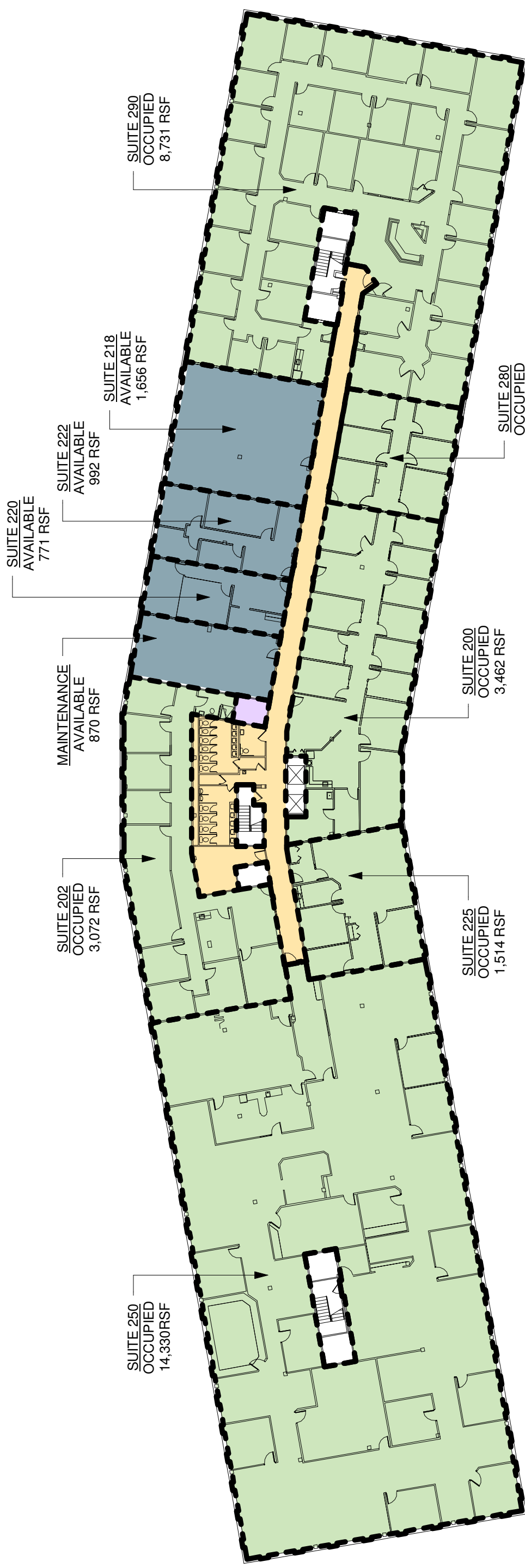
FIRST FLOOR MASTER LEASE PLAN

Drawn BY: MLC Project No: 1236.004
Checked BY: TRB Date: 9/24/2020
Scale: As indicated

LP-1

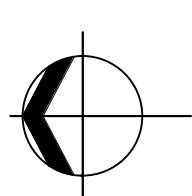
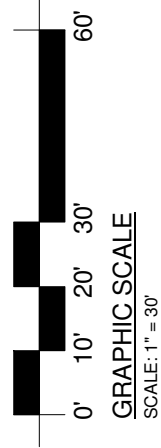
THRUWAY OFFICE BUILDING

290 Elwood Davis Road
Liverpool, NY 13088



KEY

-  OCCUPIED AREA
-  AVAILABLE AREA
-  BUILDING SERVICE AREA
-  MAJOR VERTICAL PENETRATIONS



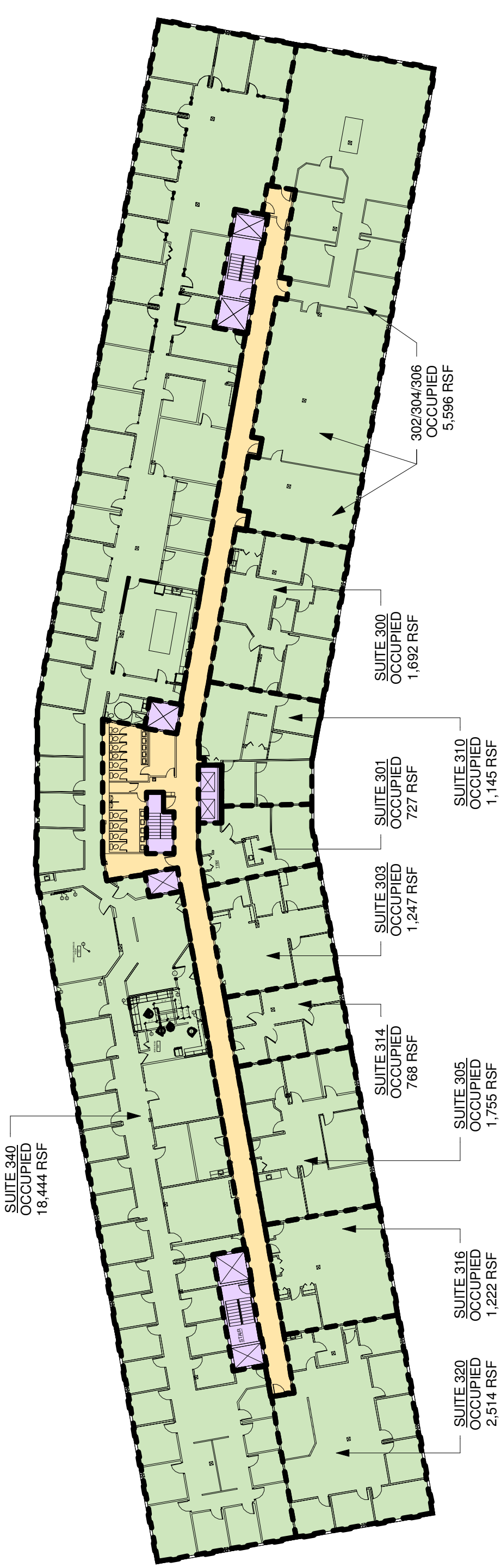
Drawn BY: MLC Project No: 1236.004
Checked BY: TRB Date: 9/24/2020
Scale: As indicated

SECOND FLOOR MASTER LEASE PLAN

LP-2

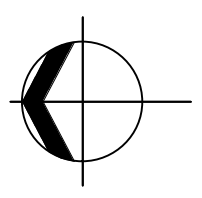
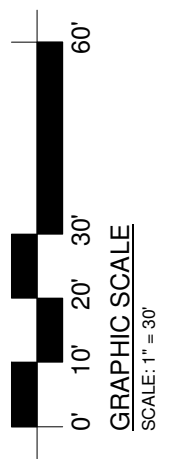
THRUWAY OFFICE BUILDING

290 Elwood Davis Road
Liverpool, NY 13088



KEY

- OCCUPIED AREA
- AVAILABLE AREA
- BUILDING SERVICE AREA
- MAJOR VERTICAL PENETRATIONS



THIRD FLOOR MASTER LEASE PLAN

Drawn BY: MLC Project No: 1236.004
Checked BY: TRB Date: 9/24/2020
Scale: As indicated

LP-3