



# SKELLY BUILDING ON THE COUNTRY CLUB PLAZA

Kansas City's High End Retail, Restaurant, Hotel, Office, and Entertainment District - World Famous Since 1922



## 5,321 SF & 2,380 SF OFFICE SPACE \$25/SF FULL SERVICE

### DEMOGRAPHICS

	1 mile	3 miles	5 miles
Estimated Population	19,987	117,434	272,556
Avg. Household Income	\$100,651	\$102,298	\$86,246

- 5,321 SF Former Law Office Available For Lease - Class A build-out (1 large conference room, 4 large offices, 1 very large presidential office, 6 permanent cubicles, 2 huge storage areas, 1 large meeting/war room, 1 large break room, and a large server room)
- 2,300 SF lower level built-out office space, next door to Panera Bread
- Class A lobby with 47th Street entrance
- Covered and heated parking garage

 [CLICK HERE TO VIEW MORE LISTING INFORMATION](#)

**For More Information Contact:** *Exclusive Agents*  
**DAVID BLOCK** | 816.412.7400 | [dblock@blockandco.com](mailto:dblock@blockandco.com)  
**ALEX BLOCK** | 816.412.7373 | [ablock@blockandco.com](mailto:ablock@blockandco.com)  
**MAX KOSOGLAD** | 816.412.7363 | [mkosoglad@blockandco.com](mailto:mkosoglad@blockandco.com)





# SKELLY BUILDING ON THE COUNTRY CLUB PLAZA

Kansas City's High End Retail, Restaurant, Hotel, Office,  
and Entertainment District - World Famous Since 1922

## 2ND FLOOR OFFICE SPACE PHOTOS (5,321 SF)





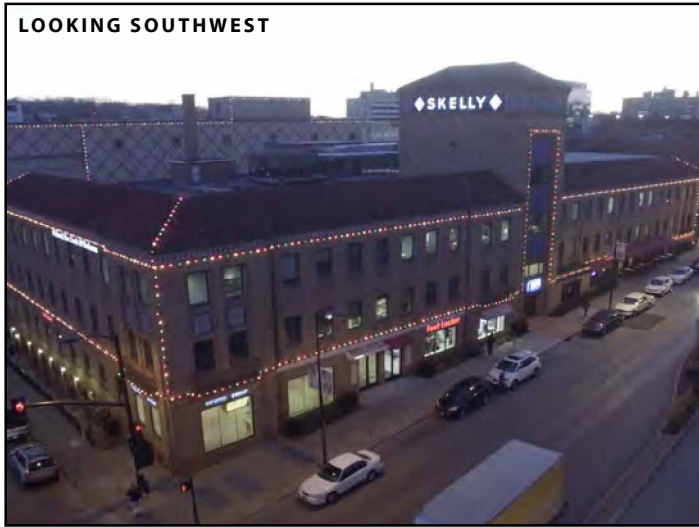
# SKELLY BUILDING ON THE COUNTRY CLUB PLAZA

Kansas City's High End Retail, Restaurant, Hotel, Office,  
and Entertainment District - World Famous Since 1922

## 2ND FLOOR OFFICE SPACE PHOTOS (5,321 SF)



## EXTERIOR PHOTOS





# SKELLY BUILDING ON THE COUNTRY CLUB PLAZA

Kansas City's High End Retail, Restaurant, Hotel, Office,  
and Entertainment District - World Famous Since 1922

## AERIAL PHOTOS

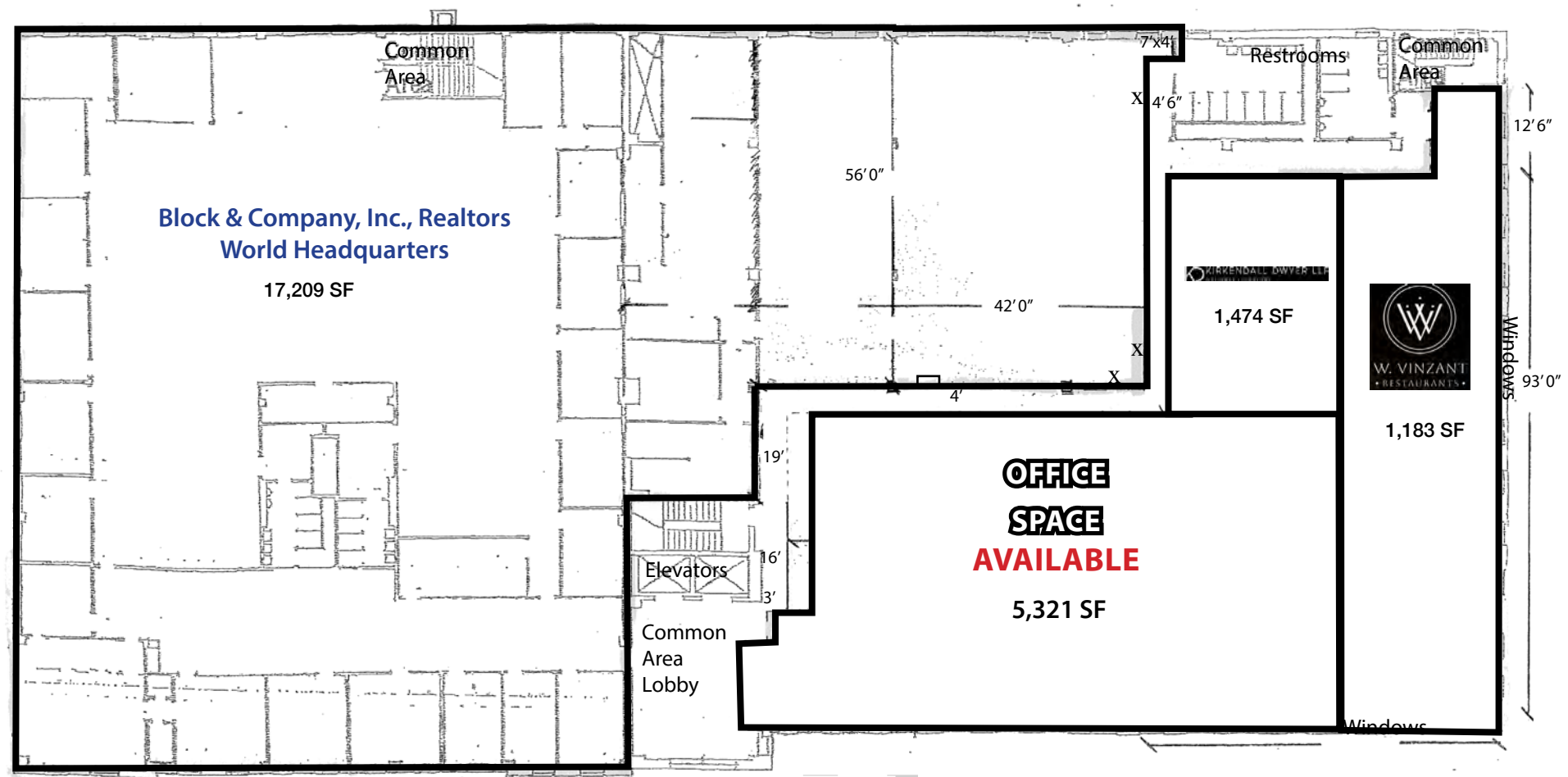




# SKELLY BUILDING ON THE COUNTRY CLUB PLAZA

Kansas City's High End Retail, Restaurant, Hotel, Office,  
and Entertainment District - World Famous Since 1922

## OFFICE SPACE PLAN (2ND FLOOR)

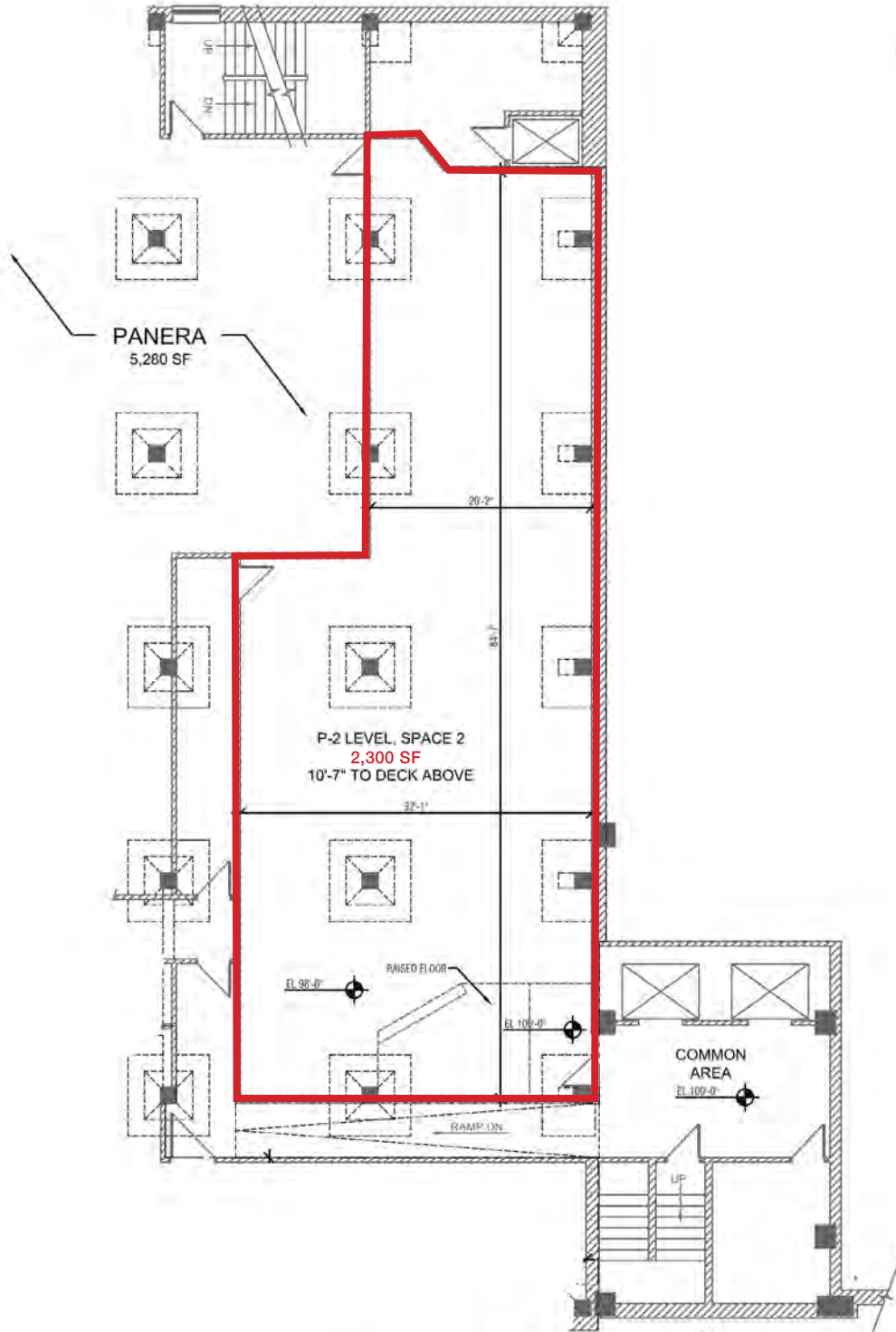





# SKELLY BUILDING ON THE COUNTRY CLUB PLAZA

Kansas City's High End Retail, Restaurant, Hotel, Office, and Entertainment District - World Famous Since 1922

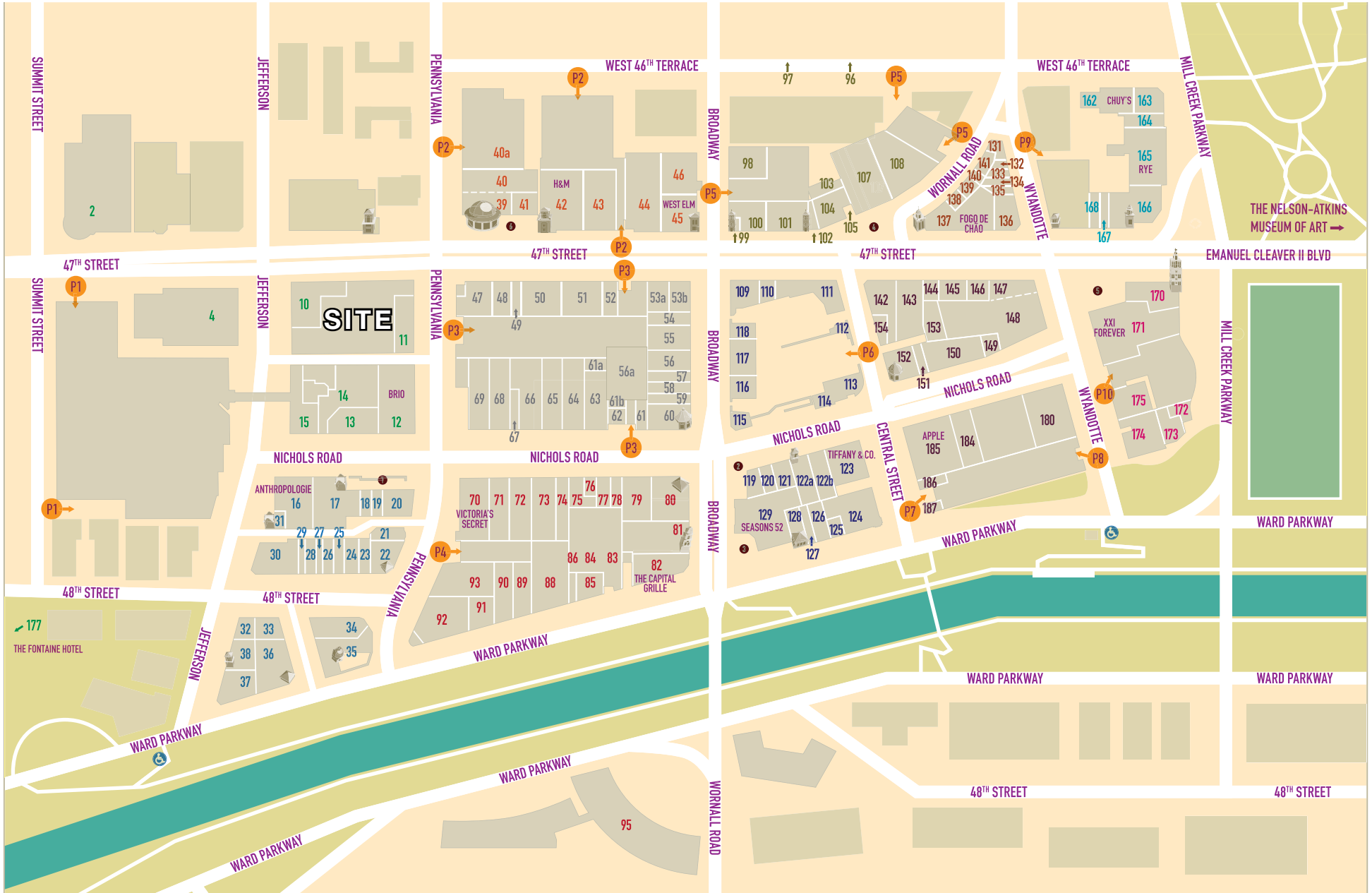
## 2,300 SF OFFICE SPACE PLAN (P2 LEVEL)



P-2 LEVEL   
**BLOCK & COMPANY - SKELLY BUILDING**  
 605 WEST 47TH STREET KANSAS CITY, MISSOURI



# COUNTRY CLUB PLAZA





**NEW TO THE PLAZA**

27	Bambou Salons ◉	561-1302
154	Bruu Café ◉ ✕	239-3249
109	EB & Co. ◉	214-6223
63	Kindred Shops ◉	492-7287
115	Matches Boutique ◉ ✕	255-3159
102	Messenger – 47th Street ◉	326-8644
31	Messenger – Jefferson ◉	437-8445
151	Nickel & Suede ◉	499-8811
143	Rally House – East ◉	384-0581
124	Sterling Bank (ATM) ✕	627-6600

**WOMEN'S APPAREL / ACCESSORIES**

66	Altar'd State	865-6100
16	Anthropologie	531-4429
11	Athleta	753-7557
57	Chico's	931-3777
77	Eileen Fisher ✕	531-5566
145	Evereve	569-2253
58	Francesca's Collections	531-5141
67	Free People ✕	531-2669
120	kate spade new york ✕	756-5244
63	Kindred Shops ◉	492-7287
122a	Madewell	756-5365
115	Matches Boutique ◉ ✕	255-3159
119	Michael Kors ✕	531-2038
151	Nickel & Suede ◉	499-8811
128	Ricca Sposa Bridal ✕	913-709-4615
79	Soft Surroundings ✕	756-5040
20	Terrasi Living & Scandia Home ◉ ✕	753-4144
70	Victoria's Secret	531-2650
109	White House Black Market	960-0580

**MEN'S & WOMEN'S APPAREL / ACCESSORIES**

39	Banana Republic	753-1157
53a	Charlie Hustle ◉ ✕	541-4387
73	Express	753-7151
42	H&M	960-1030
68	Indochino ✕	855-334-0788
17	J.Crew	753-9744
118	J.McLaughlin ✕	960-3754
54	Lucky Brand Jeans ✕	753-5823
80	lululemon	531-2894
184	Marine Layer ✕	569-0276
50	Moosejaw	832-4493
43	The North Face ✕	931-4439
104	Old Navy	756-0300
143	Rally House – East ◉	384-0581
91	Rally House – West ◉	756-5409
101	Tommy Bahama ✕	531-8688
152	UNTUCKit ✕	216-1455
13	Urban Outfitters ✕	753-8500
48	Vans	531-2058
53b	vineyard vines ✕	800-5128
171	XXI Forever	753-7473

**ACCESSORIES / OPTICAL / LUGGAGE**

146	Brighton Collectibles ✕	531-8138
100	Coach	561-1771
109	EB & Co. ◉	214-6223
120	kate spade new york ✕	756-5244
119	Michael Kors ✕	531-2038
26	Milan Optique ◉ ✕	569-2700
74	Sunglass Hut	531-4340
57	Tumi ✕	753-4306
122b	Warby Parker ✕	298-0660

**SHOES**

59	Aldo	531-4790
39	Banana Republic	753-1157
146	Brighton Collectibles ✕	531-8138
120	kate spade new york ✕	756-5244
119	Michael Kors ✕	531-2038
50	Moosejaw	832-4493
131	Renner's Boots, Shoes & Repair ◉ ✕	561-0740
48	Vans	531-2058

**CHILDREN'S APPAREL**

53a	Charlie Hustle ◉ ✕	541-4387
42	H&M	960-1030
17	J.Crew Crewcuts	753-9744
43	Old Navy	931-4439
143	Rally House – East ◉	384-0581
91	Rally House – West ◉	756-5409
53b	vineyard vines ✕	800-5128
171	XXI Forever	753-7473

**GIFTS / SPECIALTY STORES**

144	3DHQ ◉ ✕	913-204-1234
185	Apple	448-9200
44	Barnes & Noble Booksellers	753-1313
72	Bath & Body Works	561-1613
88	Beauty Brands ◉	753-8822
121	Casper ✕	301-7431
85	Diebel's Sportsmens Gallery ◉	931-2988
55	Hallmark Gold Crown ◉	931-4555
68	Indochino ✕	855-334-0788
49	IT'SUGAR ✕	759-8666
120	kate spade new york ✕	756-5244
80	lululemon	531-2894
107	Made in KC Marketplace ◉	718-0806
50	Moosejaw	832-4493
151	Nickel & Suede ◉	499-8811
104	The North Face ✕	756-0300
33	Paper Source	753-2777
143	Rally House – East ◉	384-0581
91	Rally House – West ◉	756-5409
148	RE: Emporium ◉	913-274-8321
128	Ricca Sposa Bridal ✕	913-709-4615
64	Sephora	753-5996
20	Terrasi Living & Scandia Home ◉ ✕	753-4144

23	Three Dog Bakery ◉	753-3647
123	Tiffany & Co. ✕	531-7676
56	T-Mobile ◉	521-6300
45	west elm ✕	960-3765

**HOME / ART / ANTIQUES**

16	Anthropologie	531-4429
107	Made in KC Marketplace ◉	718-0806
148	RE: Emporium ◉	913-274-8321
79	Soft Surroundings ✕	756-5040
20	Terrasi Living & Scandia Home ◉ ✕	753-4144
13	Urban Outfitters ✕	753-8500
45	west elm ✕	960-3765

**JEWELRY**

109	EB & Co. ◉	214-6223
61	Kendra Scott	448-8323
151	Nickel & Suede ◉	499-8811
123	Tiffany & Co. ✕	531-7676
150	TIVOL ◉	531-5800
32	Vinca Fine Jewelry ◉ ✕	531-5591

**PERSONAL / PROFESSIONAL SERVICES**

21	Amazing Lash Studio	338-0340
27	Bambou Salons ◉	561-1302
88	Beauty Brands ◉	753-8822
29	Brow Threading ◉ ✕	913-492-4060
175	CorePower Yoga	897-0678
84	Country Club Carwash ◉ ✕	365-2641
61b	Country Club Plaza Public Safety	753-7973
62	Industrious ✕	281-8605
139	Larissa's Tailor Shop ◉ ✕	753-1209
163	Massage Envy	994-3689
56a	Mojo Cycling Studio ◉ ✕	561-1995
134	Plaza Hair Design ◉ ✕	753-2936
133	Plaza Nails ◉ ✕	701-6616
131	Renner's Boots, Shoes & Repair ◉ ✕	561-0740
141	Salon Sophia ◉ ✕	756-0024
56	T-Mobile	521-6300
4	Unity Temple	561-4466
186	The UPS Store	561-7411
122b	Warby Parker ✕	298-0660

**RESTAURANTS**

12	BRIO Italian Mediterranean ✕	561-5888
105	Buca di Beppo ✕	931-6548
82	The Capital Grille ✕	531-8345
170	The Cheesecake Factory	960-1919
162	Chuy's ✕	931-2783
111	Classic Cup Café ◉ ✕	753-1840
46	Cooper's Hawk Winery & Restaurant ✕	531-1500
174	Fiorella's Jack Stack Barbecue ◉	531-7427
137	Fogo de Chão ✕	931-7700
35	Gram & Dun ◉ ✕	389-2900
36	The Granfalloon Restaurant & Bar ◉ ✕	753-7850
89	Kona Grill ✕	931-5888

40	McCormick & Schmick's Seafood ✕	531-6800
90	The Melting Pot ✕	931-MELT
22	O'Dowd's Gastrobar ◉ ✕	561-2700
166	P.F. Chang's China Bistro ✕	931-9988
116	Potbelly Sandwich Shop	332-4953
165	Rye ◉	541-3382
129	Seasons 52 ✕	531-0052
142	Shake Shack	807-4030
92	True Food Kitchen ✕	931-4947
30	Zócalo Mexican Cuisine ◉ ✕	756-5555

**SPECIALTY FOOD & WINE**

167	Auntie Anne's / Cinnabon	216-1087
44	Barnes and Noble Café	753-1313
24	The Better Cheddar ◉	561-8204
154	Bruu Café ◉ ✕	239-3249
168	Cold Stone Creamery	531-8200
138	Cupcake A La Mode ◉	960-1911
49	IT'SUGAR ✕	759-8666
107	Made in KC Marketplace ◉	718-0806
102	Messenger – 47th Street ◉	326-8644
31	Messenger – Jefferson ◉	437-8445
113	Starbucks	753-4246
112	Topsy's Popcorn Shoppe ◉	753-7373

**FINANCIAL INSTITUTIONS**

47	Bank of America (ATM)	714-7010
61a	Country Club Bank (ATM) & Drive-thru	931-4060
124	Sterling Bank (ATM) ✕	627-6600

**LOCAL**

144	3DHQ ◉ ✕	913-204-1234
27	Bambou Salons ◉	561-1302
88	Beauty Brands ◉	239-3249
24	The Better Cheddar ◉	753-8822
154	Bruu Café ◉ ✕	561-8204
53a	Charlie Hustle ◉ ✕	541-4387
111	Classic Cup Café ◉ ✕	753-1840
138	Cupcake A La Mode ◉	960-1911
149	Cupcakin Bakery ◉ ✕	813-4880
85	Diebel's Sportsmens Gallery ◉	931-2988
109	EB & Co. ◉	214-6223
174	Fiorella's Jack Stack Barbecue ◉	531-7427
35	Gram & Dun ◉ ✕	389-2900
36	The Granfalloon Restaurant & Bar ◉ ✕	753-7850
55	Hallmark Gold Crown ◉	931-4555
63	Kindred Shops ◉	492-7287
139	Larissa's Tailor Shop ◉ ✕	753-1209
107	Made in KC Marketplace ◉	718-0806
115	Matches Boutique ◉ ✕	255-3159
102	Messenger – 47th Street ◉	326-8644
31	Messenger – Jefferson ◉	437-8445
26	Milan Optique ◉ ✕	569-2700
56a	Mojo Cycling Studio ◉ ✕	561-1995
151	Nickel & Suede ◉	499-8811
22	O'Dowd's Gastrobar ◉ ✕	561-2700

134	Plaza Hair Design ◉ ✕	753-2936
133	Plaza Nails ◉ ✕	701-6616
143	Rally House – East ◉	384-0581
91	Rally House – West ◉	756-5409
131	Renner's Boots, Shoes & Repair ◉ ✕	561-0740
148	RE: Emporium ◉	913-274-8321
128	Ricca Sposa Bridal ◉ ✕	913-709-4615
165	Rye ◉	541-3382
141	Salon Sophia ◉ ✕	756-0024
20	Terrasi Living & Scandia Home ◉ ✕	753-4144
23	Three Dog Bakery ◉	753-3647
150	TIVOL ◉	531-5800
56	T-Mobile	521-6300
112	Topsy's Popcorn Shoppe ◉	753-7373
32	Vinca Fine Jewelry ◉ ✕	531-5591
30	Zócalo Mexican Cuisine ◉ ✕	756-5555

**HOTELS**

177	The Fontaine Hotel ✕	913-8800
95	The InterContinental Hotel ✕	756-1500
97	Residence Inn by Marriott	753-0033
2	Sheraton Suites	931-4400

**COURTYARDS**

1	Penguin	4	Neptune
2	Mermaid	5	Chandler
3	Pomona	6	Valencia

**PARKING**

1	Seville Garage	20	Plaza Central Garage
2	Valencia Place Garage	21	Plaza 211 West Garage
3	Granada Garage	22	Plaza 211 East Garage
4	Time Garage	23	Mill Creek Garage
5	Balcony Garage	24	Giralda Garage

**MISCELLANEOUS**

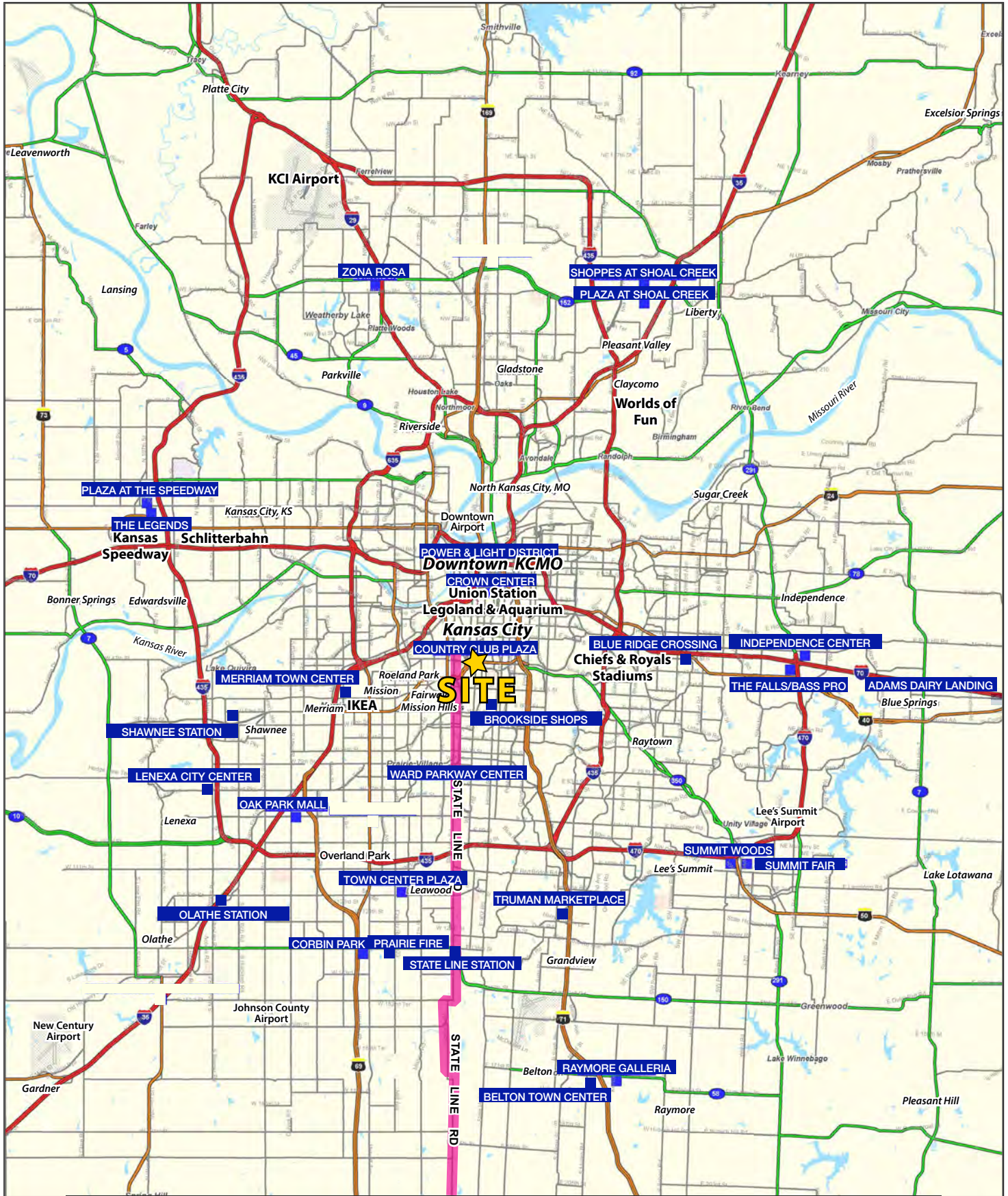
- ♿ Brush Street Handicapped Access
- ◉ Kansas City Original
- ✕ Exclusive to the Plaza

All area codes are (816) unless noted otherwise.



# SKELLY BUILDING ON THE COUNTRY CLUB PLAZA

Kansas City's High End Retail, Restaurant, Hotel, Office, and Entertainment District - World Famous Since 1922







# SKELLY BUILDING ON THE COUNTRY CLUB PLAZA

Kansas City's High End Retail, Restaurant, Hotel, Office, and Entertainment District - World Famous Since 1922

605 W. 47th Street Kansas City, MO 64112	1 mi radius	3 mi radius	5 mi radius	10 mi radius
<b>Population</b>				
2022 Estimated Population	19,987	117,434	272,556	765,083
2027 Projected Population	20,226	119,885	278,388	781,018
2020 Census Population	20,003	117,426	269,929	760,180
2010 Census Population	18,289	111,166	256,458	730,964
Projected Annual Growth 2022 to 2027	0.2%	0.4%	0.4%	0.4%
Historical Annual Growth 2010 to 2022	0.8%	0.5%	0.5%	0.4%
2022 Median Age	35.6	36.6	36.1	37.8
<b>Households</b>				
2022 Estimated Households	11,734	55,253	123,298	329,003
2027 Projected Households	11,754	56,057	125,327	336,081
2020 Census Households	11,670	54,984	122,466	325,858
2010 Census Households	10,739	51,710	113,780	308,346
Projected Annual Growth 2022 to 2027	-	0.3%	0.3%	0.4%
Historical Annual Growth 2010 to 2022	0.8%	0.6%	0.7%	0.6%
<b>Race and Ethnicity</b>				
2022 Estimated White	78.3%	62.5%	57.3%	60.5%
2022 Estimated Black or African American	8.6%	23.6%	26.3%	21.7%
2022 Estimated Asian or Pacific Islander	6.2%	4.0%	3.1%	3.6%
2022 Estimated American Indian or Native Alaskan	0.3%	0.4%	0.5%	0.5%
2022 Estimated Other Races	6.6%	9.6%	12.9%	13.7%
2022 Estimated Hispanic	6.9%	10.0%	14.3%	14.9%
<b>Income</b>				
2022 Estimated Average Household Income	\$100,651	\$102,298	\$86,246	\$83,449
2022 Estimated Median Household Income	\$71,503	\$70,461	\$65,599	\$65,856
2022 Estimated Per Capita Income	\$59,396	\$48,357	\$39,261	\$36,055
<b>Education (Age 25+)</b>				
2022 Estimated Elementary (Grade Level 0 to 8)	1.6%	2.6%	3.9%	4.1%
2022 Estimated Some High School (Grade Level 9 to 11)	2.7%	4.5%	5.6%	5.7%
2022 Estimated High School Graduate	9.3%	19.0%	22.0%	24.4%
2022 Estimated Some College	12.2%	16.3%	18.0%	20.3%
2022 Estimated Associates Degree Only	4.4%	5.1%	5.8%	7.2%
2022 Estimated Bachelors Degree Only	37.9%	29.7%	26.2%	23.6%
2022 Estimated Graduate Degree	32.0%	22.8%	18.5%	14.7%
<b>Business</b>				
2022 Estimated Total Businesses	2,089	6,347	14,418	34,605
2022 Estimated Total Employees	61,260	124,867	249,314	568,029
2022 Estimated Employee Population per Business	29.3	19.7	17.3	16.4
2022 Estimated Residential Population per Business	9.6	18.5	18.9	22.1

©2023, Sites USA, Chandler, Arizona, 480-491-1112 Demographic Source: Applied Geographic Solutions 11/2022, TIGER Geography - RS1





# SKELLY BUILDING ON THE COUNTRY CLUB PLAZA

Kansas City's High End Retail, Restaurant, Hotel, Office,  
and Entertainment District - World Famous Since 1922

RS1

605 W. 47th Street		5 mi radius	10 mi radius	15 mi radius
Kansas City, MO 64112				
POPULATION	2020 Estimated Population	273,539	758,942	1,339,339
	2025 Projected Population	288,401	789,412	1,389,395
	2010 Census Population	256,888	731,100	1,261,842
	2000 Census Population	278,377	764,295	1,206,735
	Projected Annual Growth 2020 to 2025	1.1%	0.8%	0.7%
	Historical Annual Growth 2000 to 2020	-	-	0.5%
	2020 Median Age	36.0	37.6	37.8
HOUSEHOLDS	2020 Estimated Households	125,688	328,449	559,063
	2025 Projected Households	133,351	344,924	584,159
	2010 Census Households	113,953	308,463	516,607
	2000 Census Households	120,207	320,205	490,638
	Projected Annual Growth 2020 to 2025	1.2%	1.0%	0.9%
	Historical Annual Growth 2000 to 2020	0.2%	0.1%	0.7%
RACE AND ETHNICITY	2020 Estimated White	54.1%	61.5%	69.1%
	2020 Estimated Black or African American	32.4%	23.7%	17.7%
	2020 Estimated Asian or Pacific Islander	3.1%	3.8%	4.3%
	2020 Estimated American Indian or Native Alaskan	0.6%	0.6%	0.5%
	2020 Estimated Other Races	9.9%	10.5%	8.4%
	2020 Estimated Hispanic	14.1%	14.8%	11.5%
INCOME	2020 Estimated Average Household Income	\$84,826	\$82,218	\$92,766
	2020 Estimated Median Household Income	\$65,174	\$64,156	\$74,416
	2020 Estimated Per Capita Income	\$39,181	\$35,712	\$38,817
EDUCATION (AGE 25+)	2020 Estimated Elementary (Grade Level 0 to 8)	4.0%	4.2%	3.2%
	2020 Estimated Some High School (Grade Level 9 to 11)	6.9%	6.5%	5.1%
	2020 Estimated High School Graduate	22.8%	25.6%	24.1%
	2020 Estimated Some College	18.6%	20.8%	20.5%
	2020 Estimated Associates Degree Only	6.0%	7.1%	7.5%
	2020 Estimated Bachelors Degree Only	24.9%	22.3%	24.6%
	2020 Estimated Graduate Degree	16.9%	13.6%	15.0%
BUSINESS	2020 Estimated Total Businesses	14,102	34,021	52,512
	2020 Estimated Total Employees	220,386	533,405	779,805
	2020 Estimated Employee Population per Business	15.6	15.7	14.8
	2020 Estimated Residential Population per Business	19.4	22.3	25.5

