

FOR LEASE

# SANSONE WIGWAM & PECOS CENTER

2500-2510 Wigwam Pkwy. Henderson, NV 89074



NEWMARK

# 25,453

25,453-Square-Foot, Two-Story Office Building

# 2

Available Suites – 111 / 201

# \$2.10

Price per Square Foot –NNN

# \$0.47

Price per Square Foot Estimated CAMs

# 4.52

Per 1,000SF Parking Ratio

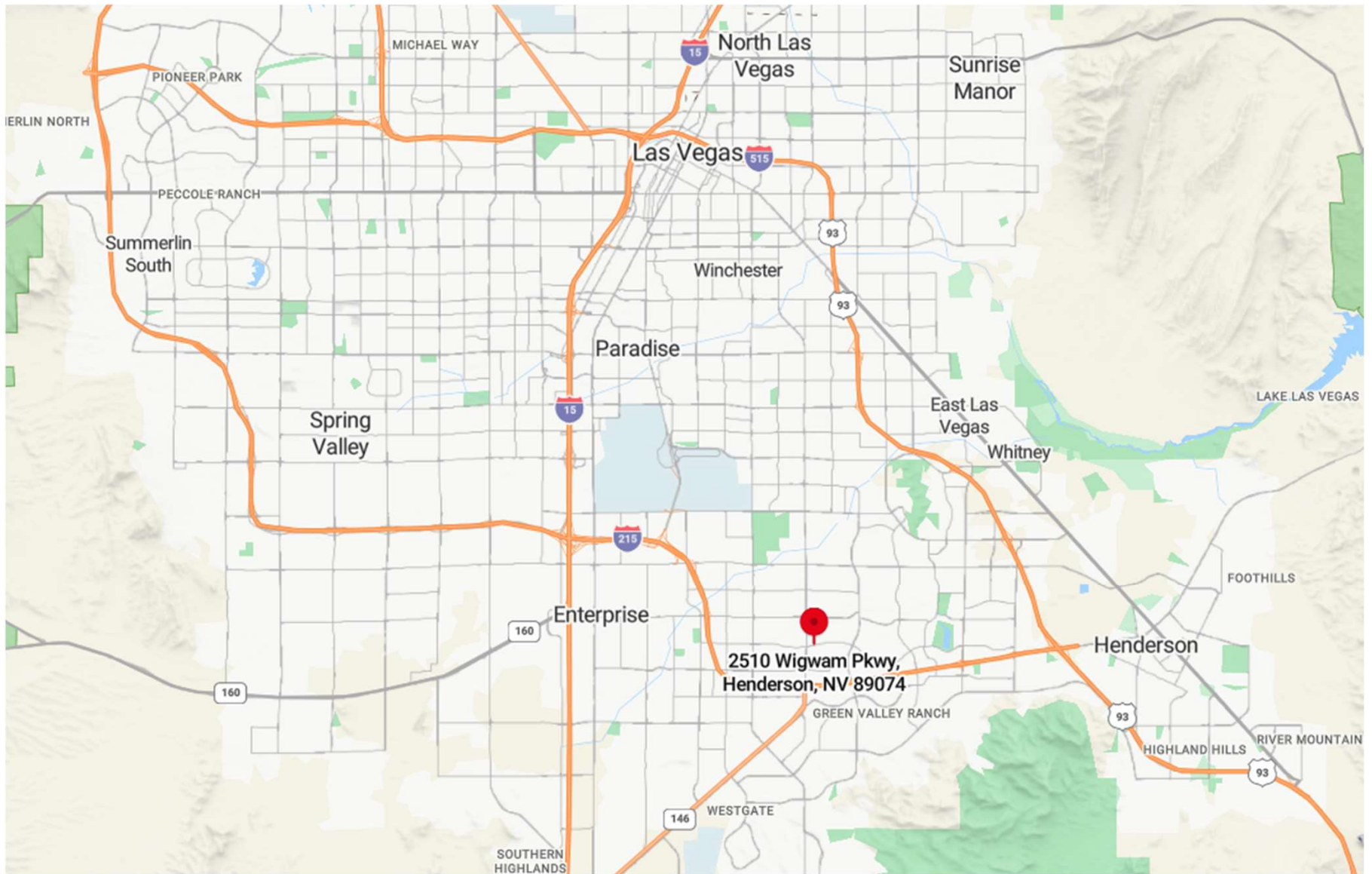


## Highlights

Sansone Wigwam & Pecos Center is located in Henderson. It offers prominent exterior signage with direct frontage on Wigwam Pkwy. with easy access to I215.

NEWMARK

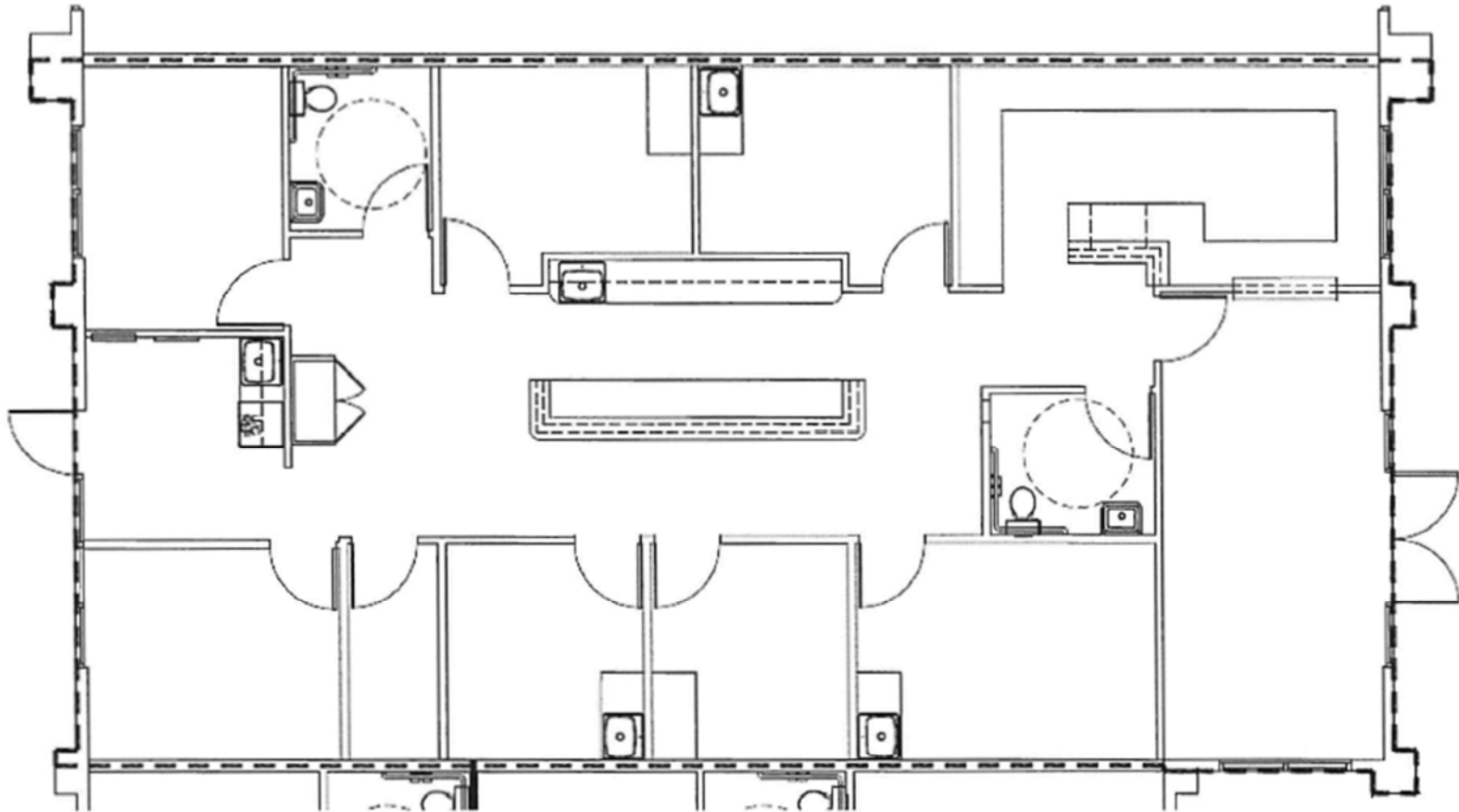
# PROPERTY HIGHLIGHTS



NEWMARK

AERIAL MAP

FOR LEASE  
AVAILABLE



NEWMARK

**SUITE 111**  
1,950 SF

FOR LEASE

AVAILABLE

TOTAL SF

A = 1,353 SF

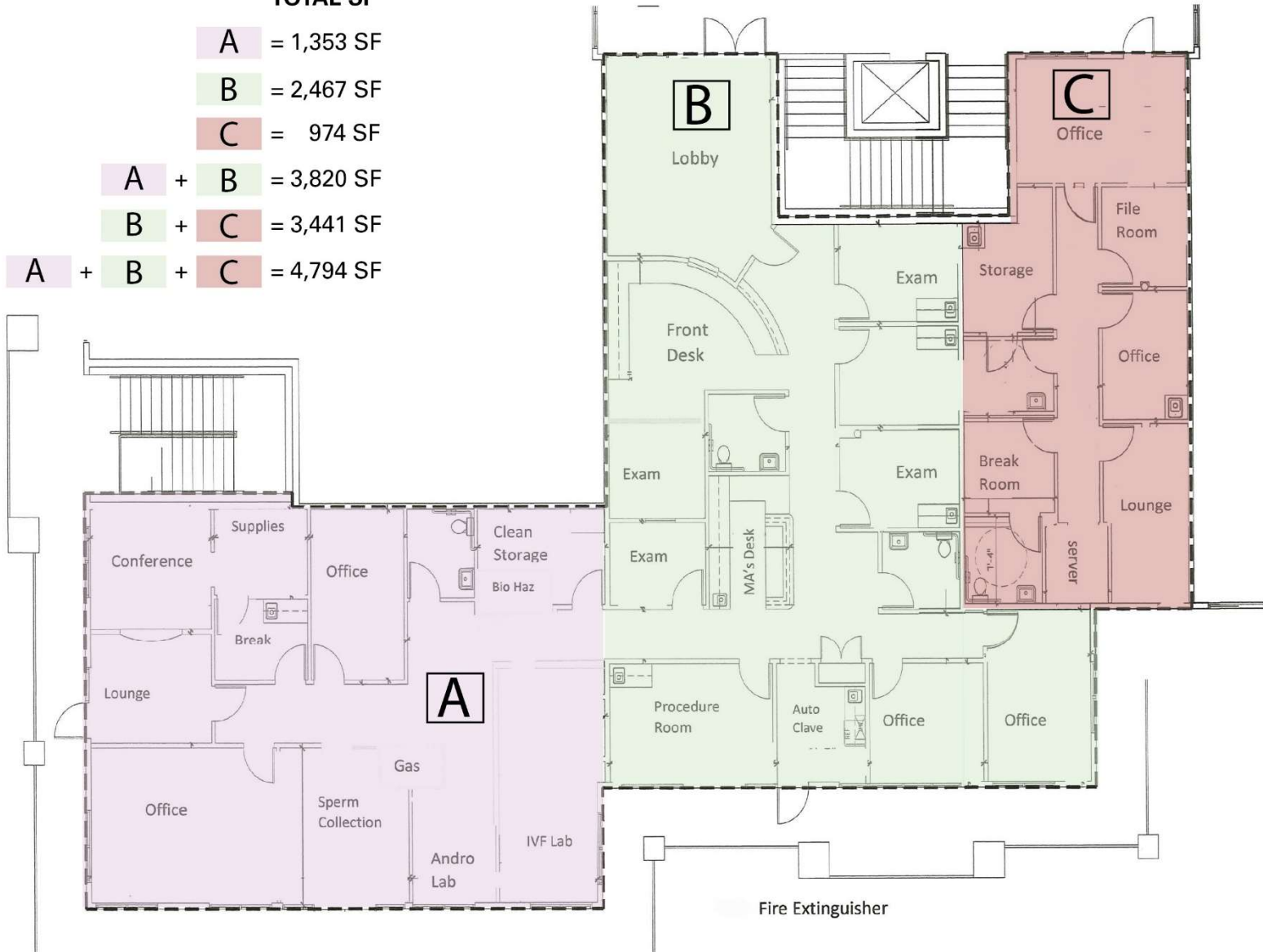
B = 2,467 SF

C = 974 SF

A + B = 3,820 SF

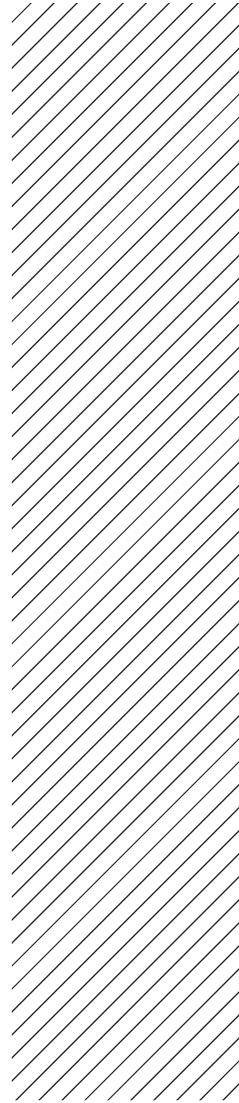
B + C = 3,441 SF

A + B + C = 4,794 SF



NEWMARK

SUITE 201  
4,794 SF



NEWMARK

PROPERTY PHOTOS

FOR LEASE

# SANSONE WIGWAM & PECOS CENTER

2500-2510 Wigwam Pkwy. Henderson, NV 89074

**Mike Tabeek, SIOR, CCIM**

*Senior Managing Director*

t 702-405-1750

[mike.tabeek@nmrk.com](mailto:mike.tabeek@nmrk.com)

NV RE Lic. #B.0145775

**Larry Singer**

*Senior Managing Director*

t 702-405-1730

[larry.singer@nmrk.com](mailto:larry.singer@nmrk.com)

NV RE Lic. #BS.0028687

**Thomas Olsen**

*Associate*

t 702-405-1714

[thomas.olsen@nmrk.com](mailto:thomas.olsen@nmrk.com)

NV RE Lic. #S.0200270



**NEWMARK**

The information contained herein has been obtained from sources deemed reliable but has not been verified and no guarantee, warranty or representation, either express or implied, is made with respect to such information. Terms of sale or lease and availability are subject to change or withdrawal without notice.