



## Development - 1.96 Acres - Melbourne FL

1500 Pine St, Melbourne, FL 32901



### Jennifer Burn

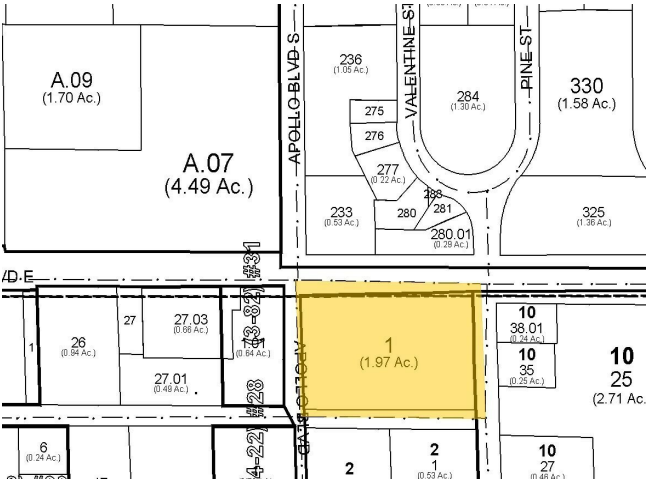
Space Coast Professional Properties  
1344 S Apollo Blvd, Suite 400, Melbourne, FL 32901  
[jburn@spacecoastprofessionalproperties.com](mailto:jburn@spacecoastprofessionalproperties.com)  
(321) 723-4891



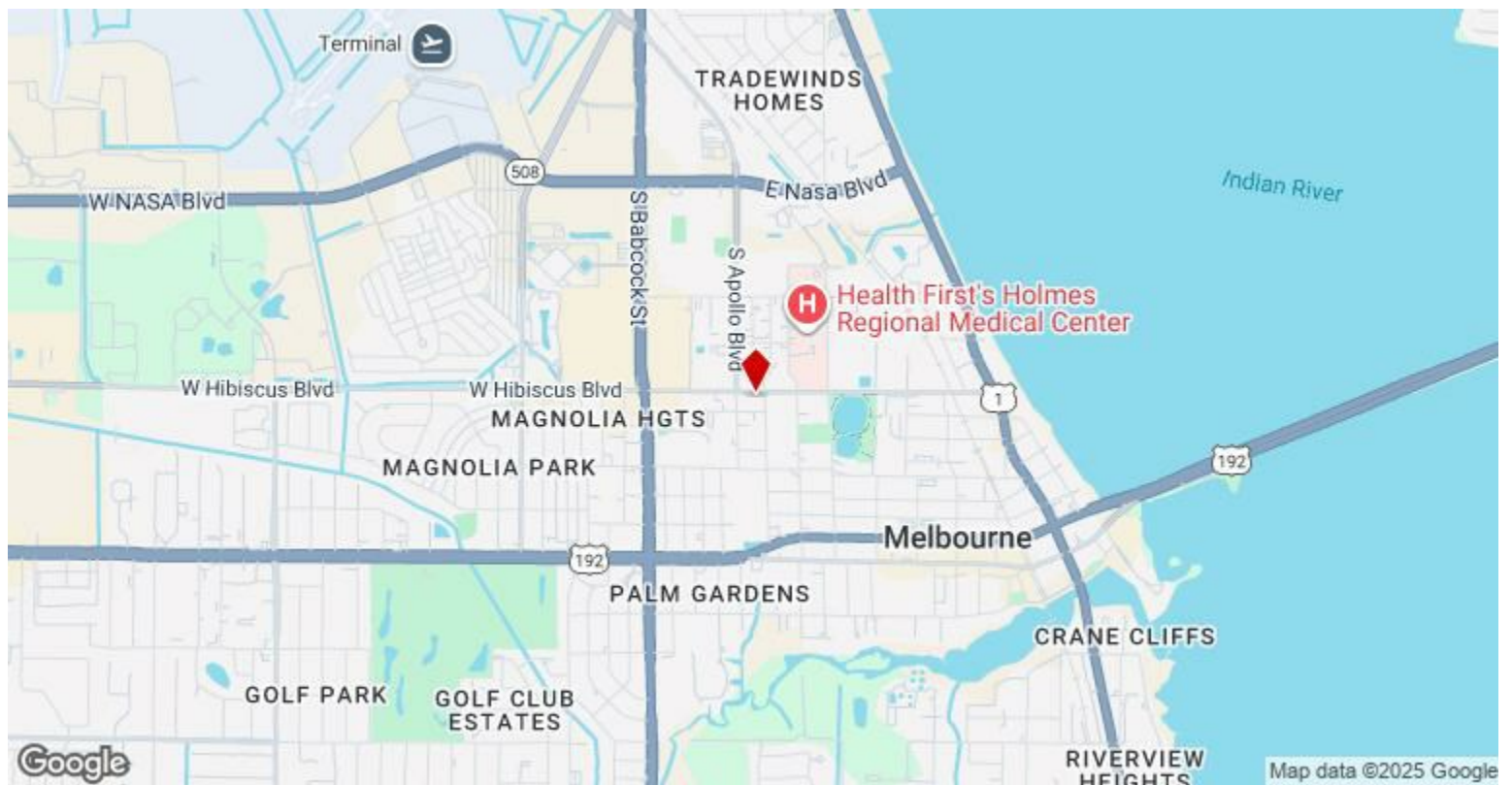
# Development - 1.96 Acres - Melbourne FL

Upon Request

Unlock the potential of Development - 1.96 Acres at 1500 Pine St, Melbourne, FL 32901! Situated in the sought-after Health First Holmes Hospital neighborhood, this prime commercial land offers 368 ft frontage on E. Hibiscus, presenting a multitude of investment possibilities. Zoned for various uses including retail, services, offices, hotels, and restaurants, this versatile 1.96-acre lot in central Melbourne caters to diverse business needs. Boasting a strategic location and C1 zoning in Melbourne, this property is a lucrative opportunity for savvy investors looking for growth and prominence in a dynamic market. Embrace the allure of commercial real estate with this cornerstone for your next successful venture. Contact us today # (321) 723-4891 to explore the potential of Development - 1.96 Acres at 1500 Pine St, Melbourne, FL 32901 and propel your business vision towards success. Price: Upon Request....



Price:	Upon Request
Property Type:	Land
Property Subtype:	Commercial
Proposed Use:	
Sale Type:	Investment
Total Lot Size:	1.96 AC
No. Lots:	1
Zoning Description:	C1, Melbourne



1500 Pine St, Melbourne, FL 32901



## Property Photos





## Property Photos

