



+/- 9.73 acres

Industrial land for sale

Rare opportunity to own land in Pinellas County

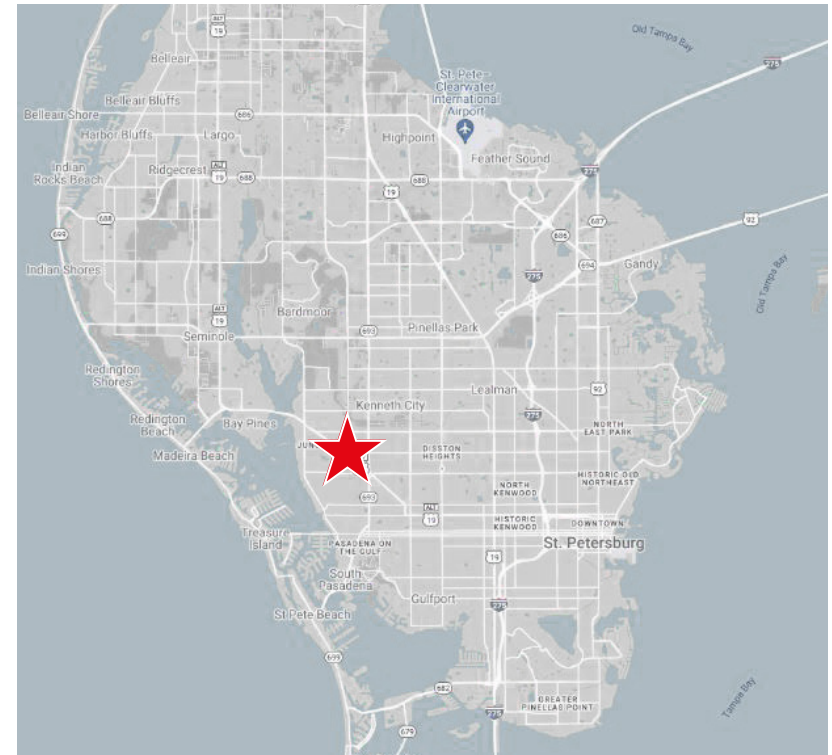


7400 22nd Ave. N.

St. Petersburg, FL 33710

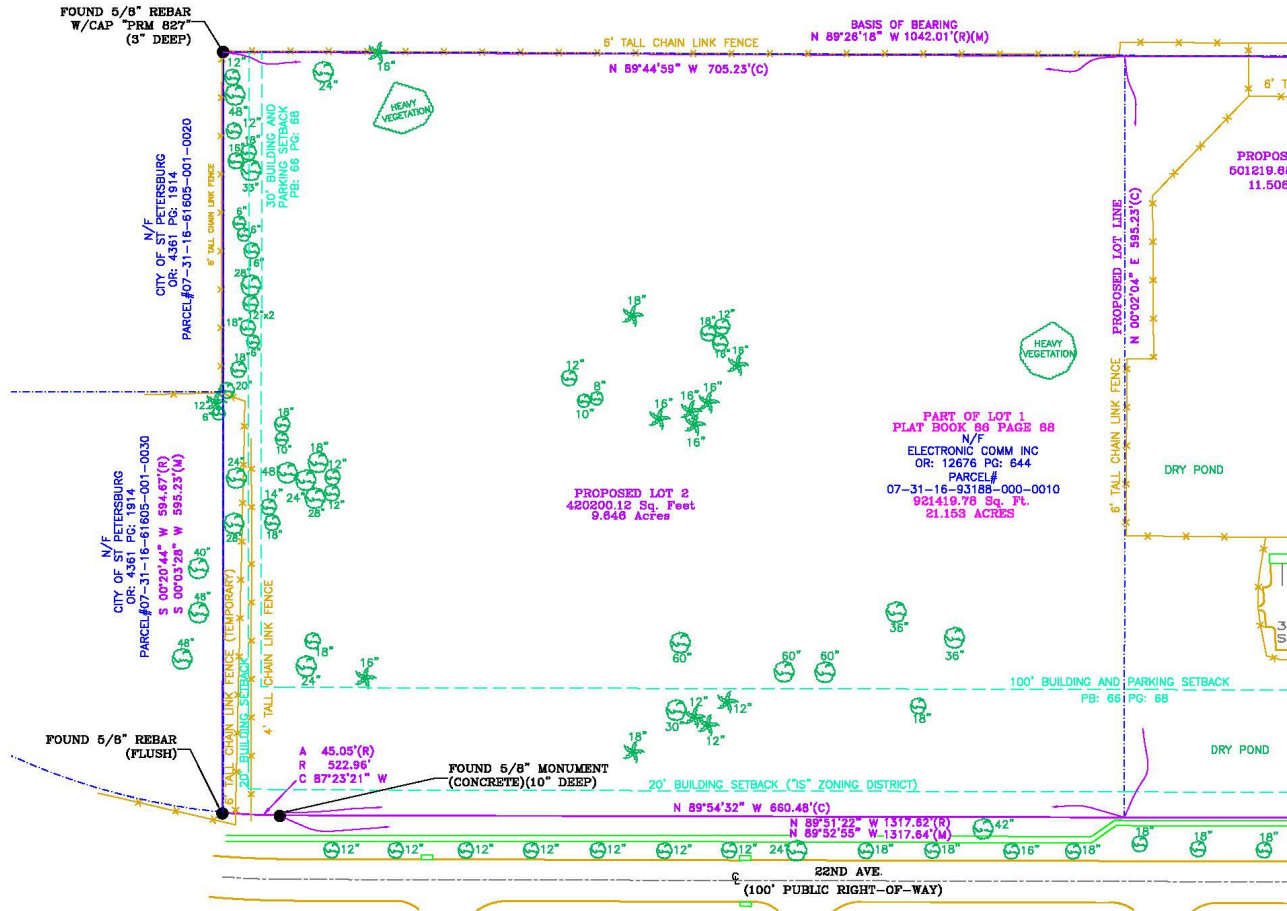
Property highlights

- +/- 9.73 acres
- Zoned IS (Industrial Suburban)
 - [Click here](#) for zoning code information and allowable uses
- All utilities to site
- Flat topography with no wetlands
- Great location with quick access to:
 - Downtown St. Petersburg (7.5 miles)
 - St. Pete-Clearwater International Airport (11.3 miles)
 - I-275 (5 miles)
- Population
 - 5 miles: 233,067
 - 15 miles: 780,118
 - 30 miles: 2,611,100



Property survey

7400 22nd Ave. N.



LEGEND

- (R)=RECORD DATA
- (M)=MEASURED DATA
- (C)=CALCULATED DATA
- =FOUND MONUMENT AS NOTED
- =DECIDUOUS TREE
- =PALM TREE
- =CONIFER TREE

John C. Dunphy, CCIM, SIOR
 Executive Managing Director
 +1 813. 387 1312
 johnc.dunphy@jll.com

Scott Altieri
 Vice President
 +1 813 387 1313
 scott.altieri@jll.com

Although information has been obtained from sources deemed reliable, neither Owner nor JLL makes any guarantees, warranties or representations, express or implied, as to the completeness or accuracy as to the information contained herein. Any projections, opinions, assumptions or estimates used are for example only. There may be differences between projected and actual results, and those differences may be material. The Property may be withdrawn without notice. Neither Owner nor JLL accepts any liability for any loss or damage suffered by any party resulting from reliance on this information. If the recipient of this information has signed a confidentiality agreement regarding this matter, this information is subject to the terms of that agreement. © 2023 Jones Lang LaSalle IP, Inc. All rights reserved.

