

501 HUDSON STREET

CORNER OF CHRISTOPHER STREET | WEST VILLAGE



501 HUDSON STREET

CORNER OF CHRISTOPHER STREET | WEST VILLAGE

PROPERTY HIGHLIGHTS

- All uses considered
- Currently Rivoli Pizza
- Fully vented
- Excellent West Village corner visibility
- Neighboring tenants include:
Dunkin', Oslo, Joe & the Juice, Aesop, CVS, Santander, Blackstone, White Horse Tavern, Rite Aid, & many more!

SIZE: 800 SF Ground Floor

FRONTAGE: 30' wraparound

POSSESSION: Arranged

ASKING RENT: Upon Request

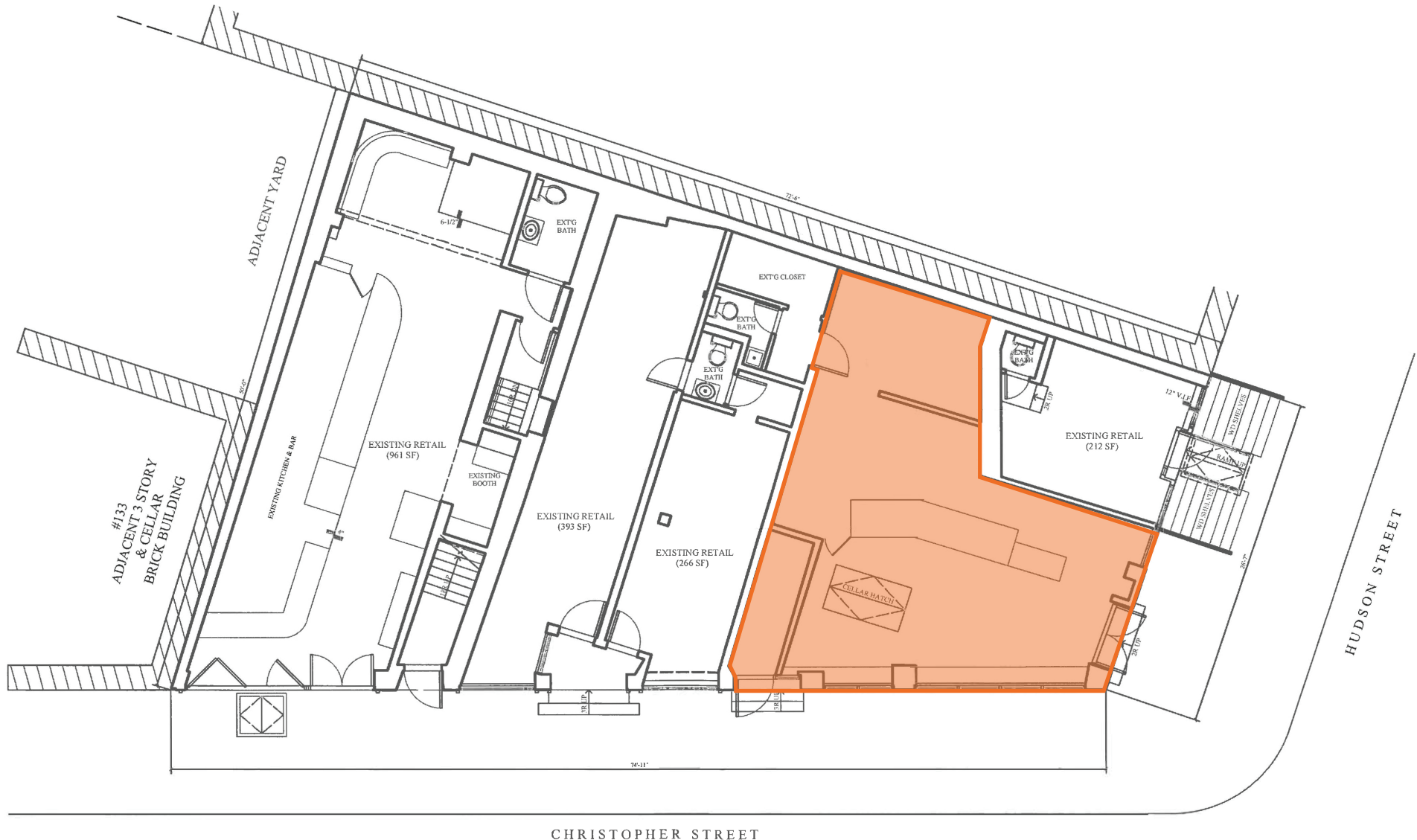
TRANSPORTATION: 



501 HUDSON STREET

CORNER OF CHRISTOPHER STREET | WEST VILLAGE

FLOOR PLANS:
GROUND FLOOR - 800 SF



All information supplied in this marketing presentation and/or flyer is from sources deemed reliable and is furnished subject to errors, omissions, modifications, removal of listings from sale/lease and to any listing condition. Any square footage, dimensions, floor plans and/or technical data set forth are approximations and are subject to further elaboration/confirmation.

501 HUDSON STREET

CORNER OF CHRISTOPHER STREET | WEST VILLAGE

FOR MORE INFORMATION,
PLEASE CONTACT:

CAROLINA AZIZ

516.640.6961 | CAziz@ksrny.com

IKE BIBI

347.417.2860 | IBibi@ksrny.com

