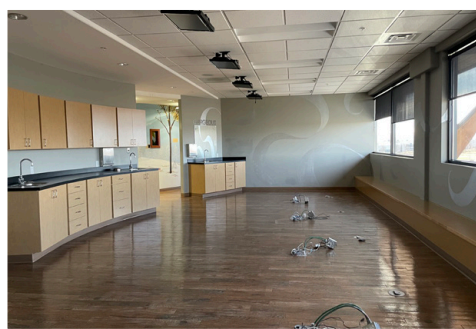


7425 Wrigley Drive #201 Pasco, WA 99301



6,338 sq. ft. | **\$30 psf/yr** | MLS 265554

ABOUT THE PROPERTY

Wonderful Class A Medical/Dental space in Pasco! Suite is on the second floor of Lourdes Medical Center, served by elevator/stairs. Former occupancy was dental and remains configured as such but space can be reconfigured for traditional medical or professional space. 5 year minimum lease, NNN, Tenants improvements negotiable.

PROPERTY HIGHLIGHTS:

- 6,338 square feet
- Second floor suite
- Elevator/staircase access
- Flexible space
- Desired 5 year min. lease, NNN
- Available now



Gayle Stack
 509-308-7310

Exclusively Presented by:

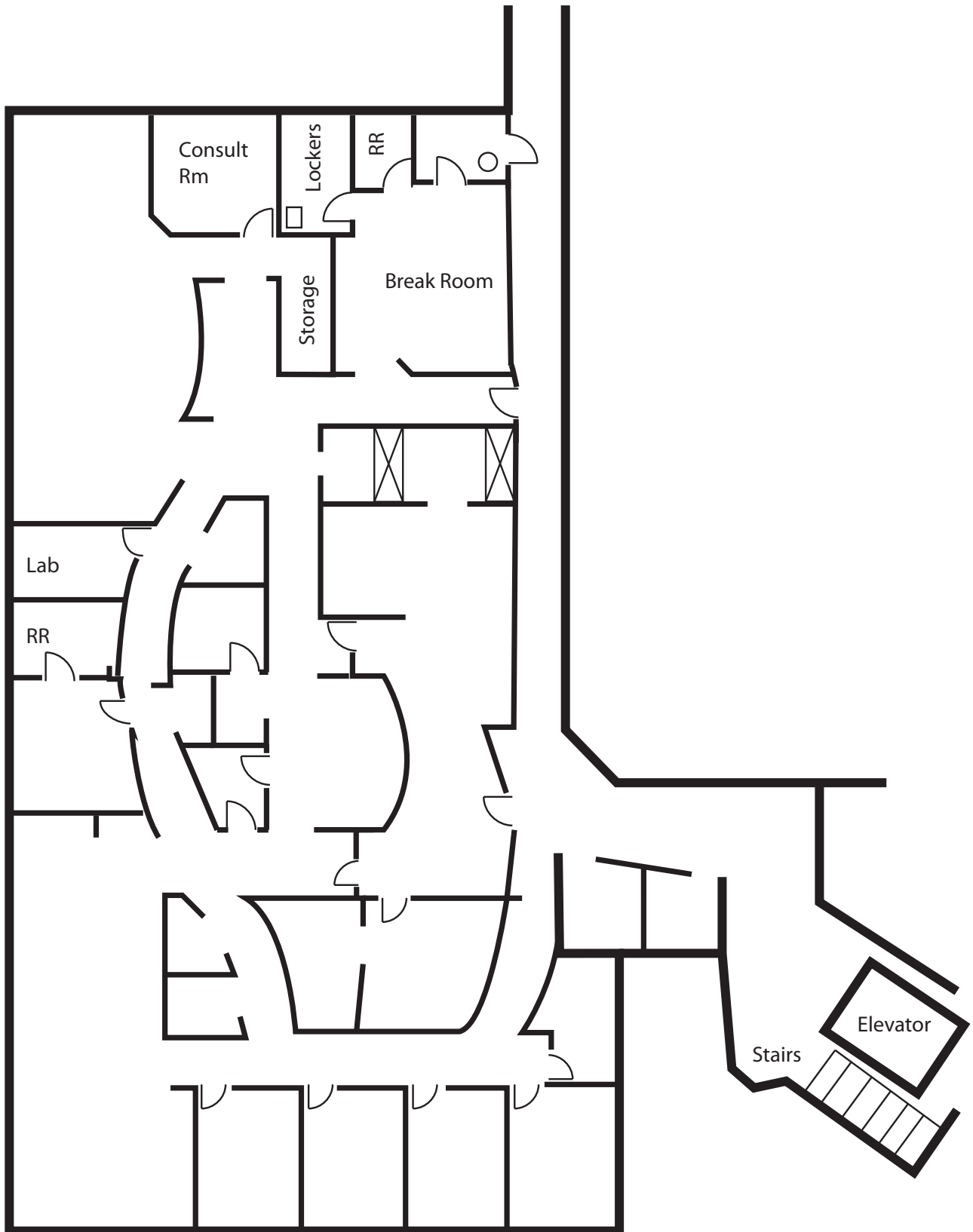
and

Kristin Reitz
 509-302-0662



PROPERTY FLOOR PLAN

*Not to Scale, Tenant to Verify



7425 Wrigley Drive #201 Pasco, WA 99301