

• THE •

MSC

# CONCOURSE

AT COMCAST CENTER

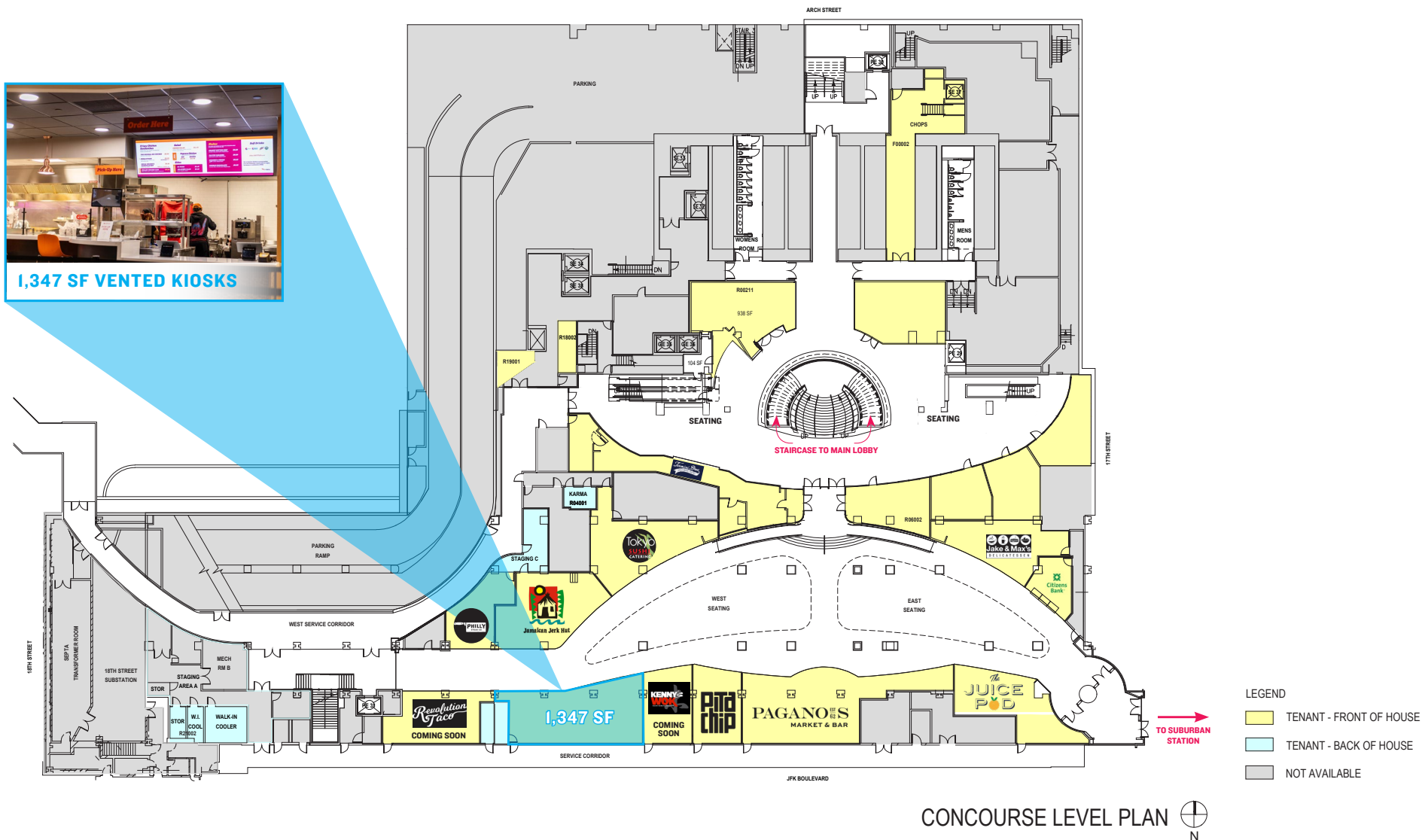
1701 JOHN F. KENNEDY BLVD  
PHILADELPHIA, PA

1,347 SF VENTED KIOSK  
FOR LEASE



# SITE PLAN

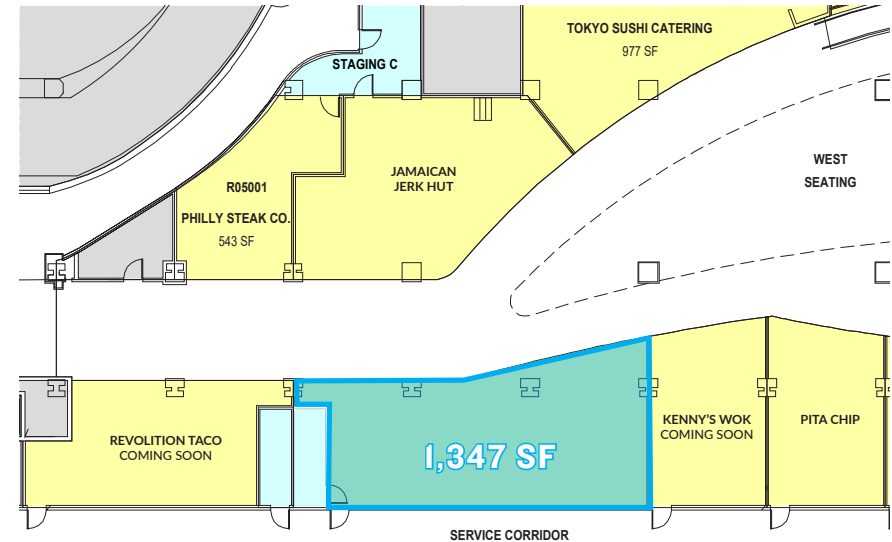
## • THE • CONCOURSE AT COMCAST CENTER



## VENTED KIOSK

- ▶ **1,347 SF**
- ▶ Vented space in the heart of the Concourse at Comcast Center with additional storage included
- ▶ Local and national brand co-tenancy
- ▶ Space renovation required, TI negotiated in lease terms
- ▶ Seating and dining amenities provided by landlord and shared amongst co-tenants

## • THE • CONCOURSE AT COMCAST CENTER



The information contained herein has been obtained from sources deemed reliable. MSC cannot verify it and makes no guarantee, warranty or representation about its accuracy. Any projections, opinions, assumptions or estimates provided by MSC are for discussion purposes only and do not represent the current or future performance of a property, location or market.

**MSC**



## VENTED KIOSK



JOIN THESE TENANTS

• THE •  
**CONCOURSE**  
AT COMCAST CENTER



The information contained herein has been obtained from sources deemed reliable. MSC cannot verify it and makes no guarantee, warranty or representation about its accuracy. Any projections, opinions, assumptions or estimates provided by MSC are for discussion purposes only and do not represent the current or future performance of a property, location or market.

**MSC**



# MARKET AERIAL

## • THE • CONCOURSE AT COMCAST CENTER





# MARKET AERIAL

## • THE • CONCOURSE AT COMCAST CENTER



# CENTER CITY TRADE AREA DEMOGRAPHICS

• THE •  
**CONCOURSE**  
AT COMCAST CENTER

FROM RIVER TO RIVER BETWEEN GIRARD AVENUE & TASKER AVENUE



ESTIMATED POPULATION

191,585



ESTIMATED BUSINESSES

17,011



ESTIMATED MEDIAN AGE

35.6



ESTIMATED AVG HH INCOME

\$150,235



ESTIMATED EMPLOYEES

224,580



# MSC

**JACOB COOPER**

jcooper@hellomsc.com

215.883.7402

**JULIA MCMANUS**

jmcmanus@hellomsc.com

215.883.7376

**ANNELLYSE CHAN**

achan@hellomsc.com

215.883.7379

