

FOR LEASE: +/- 3,000 SF OFFICE/WAREHOUSE SPACE

MARITIME WEST BUSINESS PARK | 110 PORTWATCH WAY, SUITE 103 & 104

WILMINGTON, NC | NEW HANOVER COUNTY





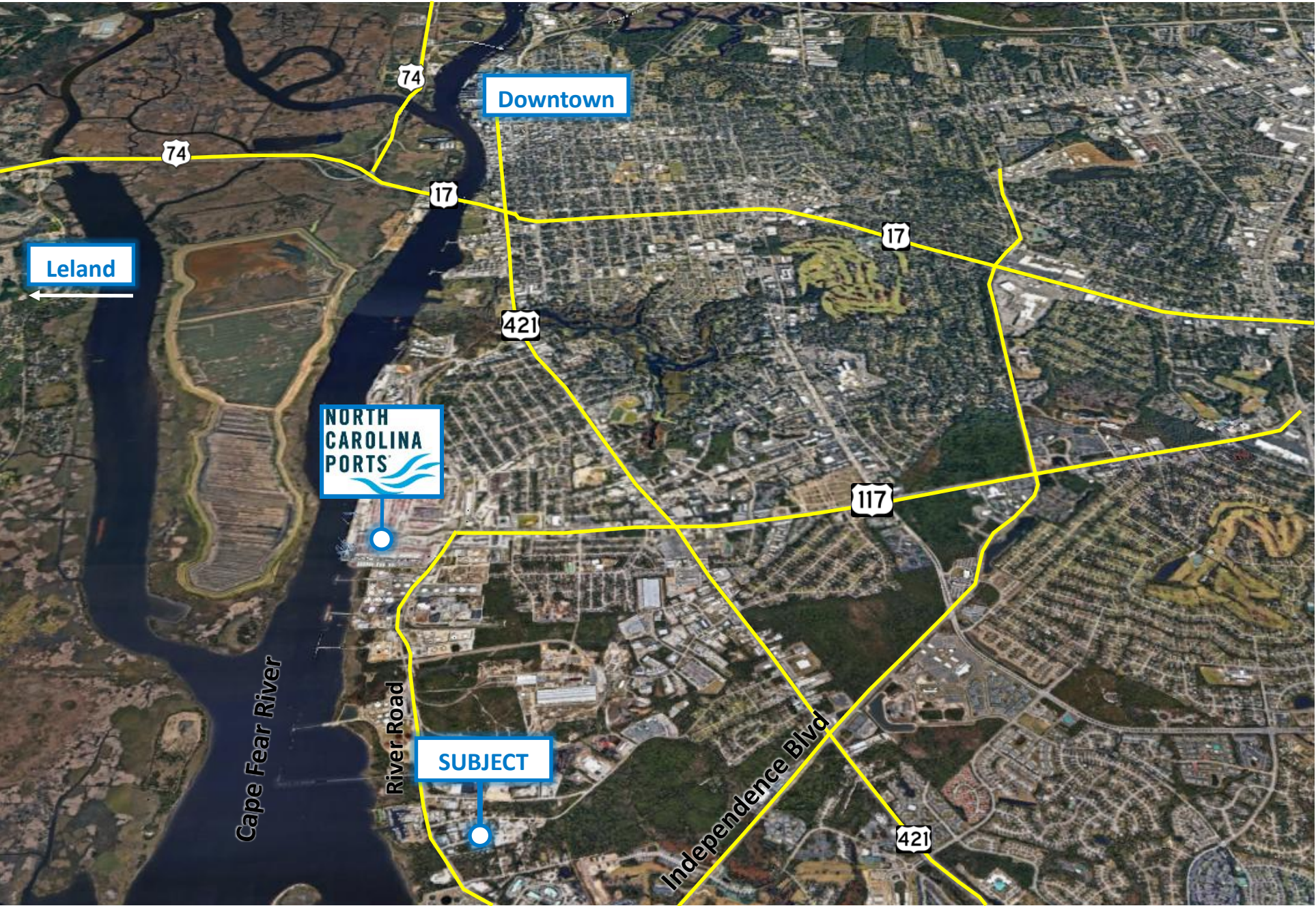
SUMMARY

ADDRESS	Maritime West Business Park 110 Portwatch Way Suite 103 & 104 Wilmington, NC 28412 New Hanover County
AVAILABLE SF	+/- 3,000 SF
PRICING	\$3,625.00 per month
TICAM	\$2.00/SF
ZONING	IND — Industrial (City of Wilmington)
DESCRIPTION	<p>+/- 3,000 SF of office/warehouse space for lease in Maritime West Business Park. The space consists of four offices and two restrooms, with the remainder in warehouse space with two overhead grade-level doors. Common loading dock on the opposite end of the building. Located in close proximity to the NC State Port, just off River Road near Sunnyvale Drive.</p> <p>Available approximately July 1, 2025</p>

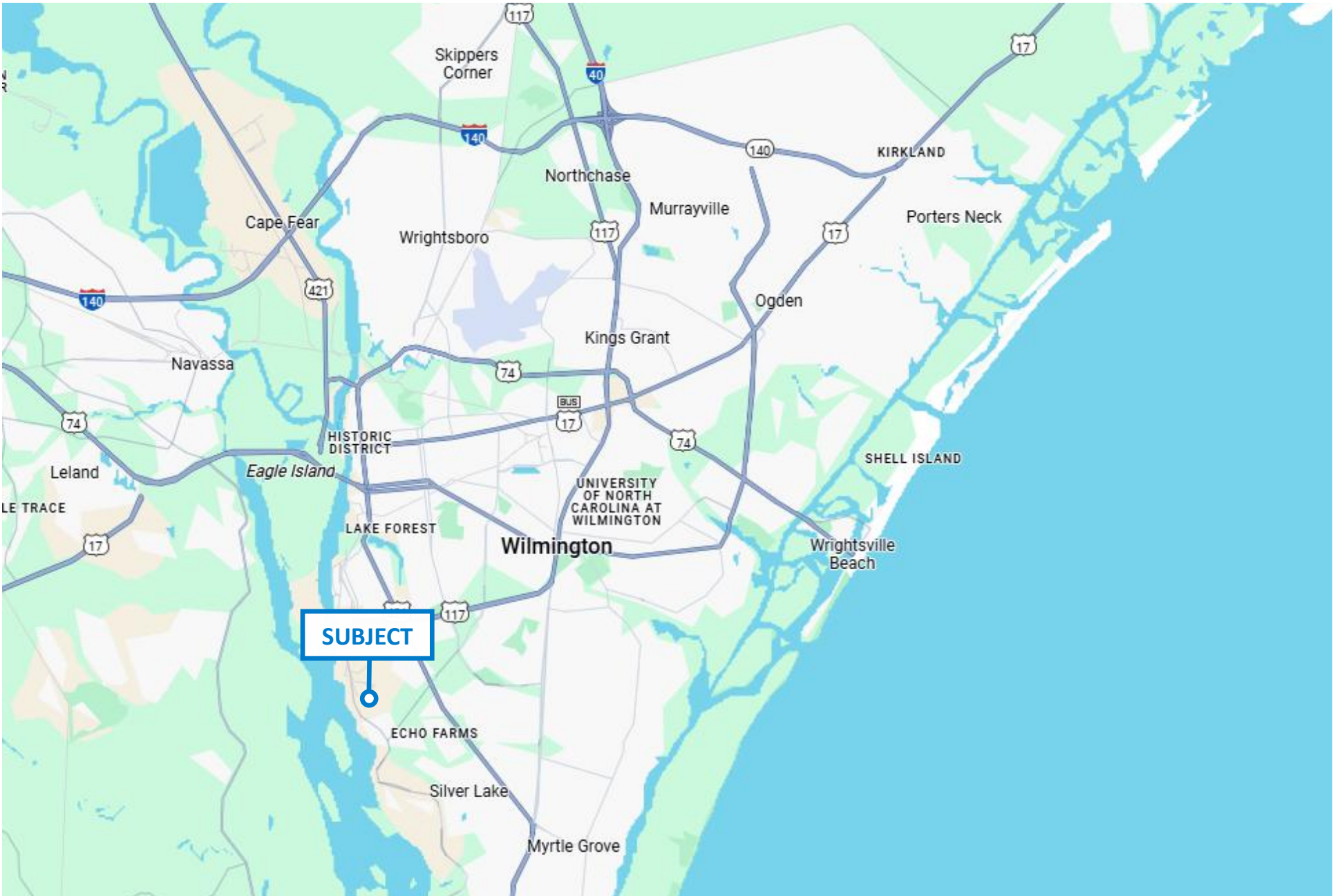
EXTERIOR PHOTOS



AERIAL MAP



LOCATION MAP





WILL LEONARD

Senior Vice President
910.233.5351 mobile
wleonard@capefearcommercial.com



102 Autumn Hall Drive | Suite 210 | Wilmington, NC 28403
capefearcommercial.com

© 2023 Cape Fear Commercial, LLC. All rights reserved. The information contained in the following Marketing Brochure is proprietary and strictly confidential. It is intended to be reviewed only by the party receiving it from Cape Fear Commercial and should not be made available to any other person or entity without the written consent of Cape Fear Commercial. This Marketing Brochure has been prepared to provide summary, unverified information to prospective purchasers, and to establish only a preliminary level of interest in the Subject property. The information contained herein is not a substitute for a thorough due diligence investigation. Cape Fear Commercial has not made any investigation, and makes no warranty or representation, with respect to the income or expenses for the Subject property, the future projected financial performance of the property, the size and square footage of the property and improvements, the presence or absence of contaminate substances, PCB's or asbestos, the compliance with State and Federal regulations, the physical condition of the improvements thereon, or the financial condition or the business prospects of any tenant's plans or intentions to continue its occupancy of the Subject property. The information contained in this Marketing Brochure has been obtained from sources we believe to be reliable; however, Cape Fear Commercial has not verified, and will not verify, any of the information contained herein, nor has Cape Fear Commercial conducted any investigation regarding these matters and makes no warranty or representation whatsoever regarding the accuracy or completeness of the Information provided. All potential buyers must take appropriate measures to verify all of the information set forth herein.