



COLDWELL BANKER
PREFERRED.
REALTORS®

MEDICAL OFFICE SPACES

3008 Sillect Ave - Bakersfield, CA



PROPERTY INFORMATION

Total Building Size: 29,866 Sq. Ft

3008 Sillect Ave - 24,016 Sq. Ft

3012 Sillect Ave - 5,850 Sq. Ft

Total Lot size: 2.65 Acres



HIGHLIGHTS

High Traffic Area near Rosedale Hwy
Direct access to CA 99 Hwy
Close to Downtown Area
Proximity to Other Medical facilities,
Shopping, Eateries & Conveniences

LEASE RATE

\$2.50 / Sq Ft /Month (Modified Gross)

3008 Sillect Ave Building

Suite 100

3,145 Rentable Sq. Ft. (Approx.)

Large Waiting Area

Reception Area

2 Office Rooms - 5 Exam Rooms

Procedure Room / Exam Room

Lounge Area & 2 Restrooms

Suite 120

3,744 Rentable Sq. Ft. (Approx.)

Large Waiting Area

Reception Area

4 Office Rooms - 8 Exam Rooms

Storage Rooms / Computer Room

Lounge Area & 2 Restrooms

Suite 140

3,025 Rentable Sq. Ft. (Approx.)

Large Waiting Area

Reception Area

2 Office Rooms - 7 Exam Rooms

2 Restrooms (one with Shower)

Lounge

Vikram Reddy

Coldwell Banker Preferred, Realtors

DRE #01845883 | Co.DRE# 01100927

661 836 2345 office | 661 900 1596 cell

vreddy1@yahoo.com

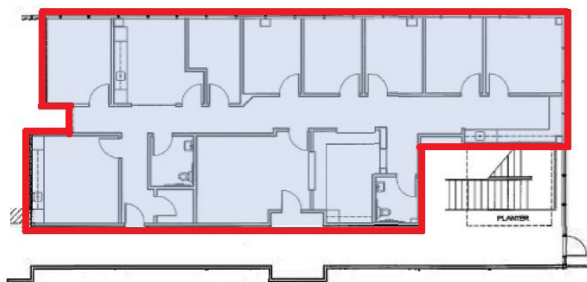


COLDWELL BANKER
PREFERRED.
REALTORS®

MEDICAL OFFICE SPACES

3008 Sillect Ave - Bakersfield, CA

3008 Sillect Avenue
Suite 100
3,145 Rentable Sq. Ft.

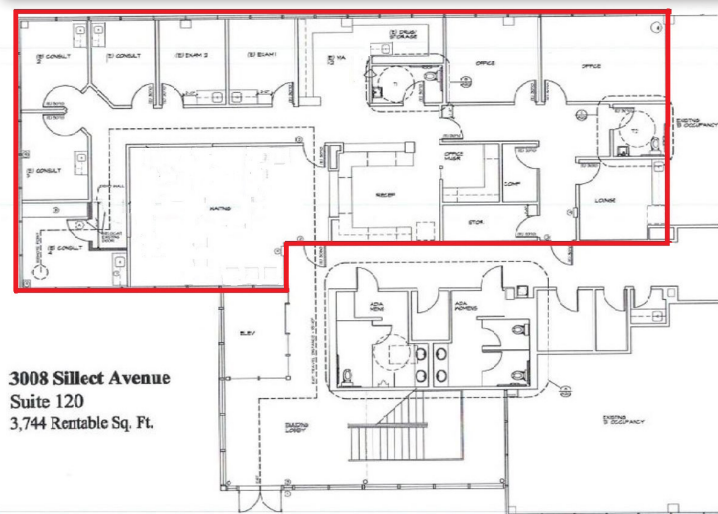


Suite 210 - LEASED

2,759 Rentable Sq. Ft. (Approx.)
Reception Area / 2 Waiting Areas
6 Exam Rooms / 1 Procedure Room
1 Office Room / Nurse Area
Storage Area / Lounge Area
Restroom

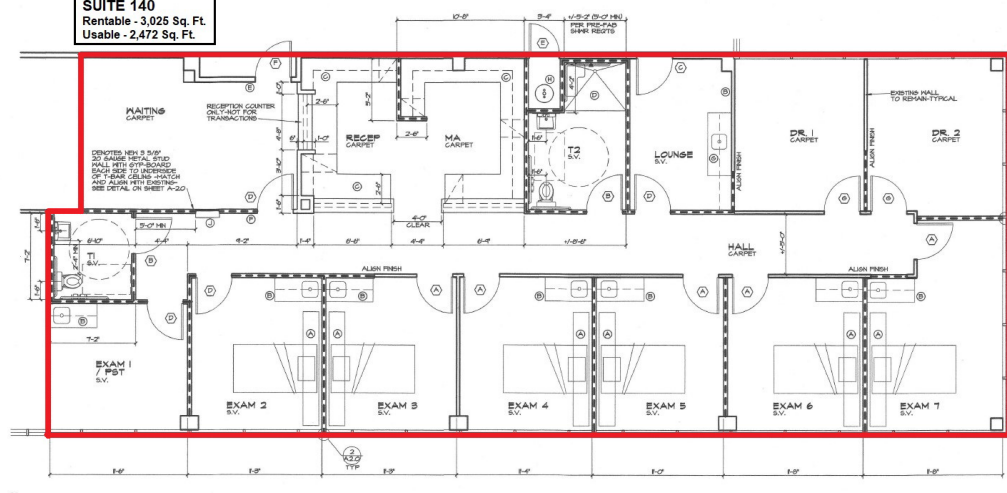
Suite 240

4,972 Rentable Sq. Ft. (Approx.)
Reception & Large Waiting Area
ME/Nurse Station
Large Triage
9 Exam Rooms
6 Office Rooms
Procedure Room
Lounge & Storage Room



3008 Sillect Avenue
Suite 120
3,744 Rentable Sq. Ft.

SUITE 140
Rentable - 3,025 Sq. Ft.
Usable - 2,472 Sq. Ft.



Vikram Reddy

Coldwell Banker Preferred, Realtors
DRE #01845883 | Co.DRE# 01100927

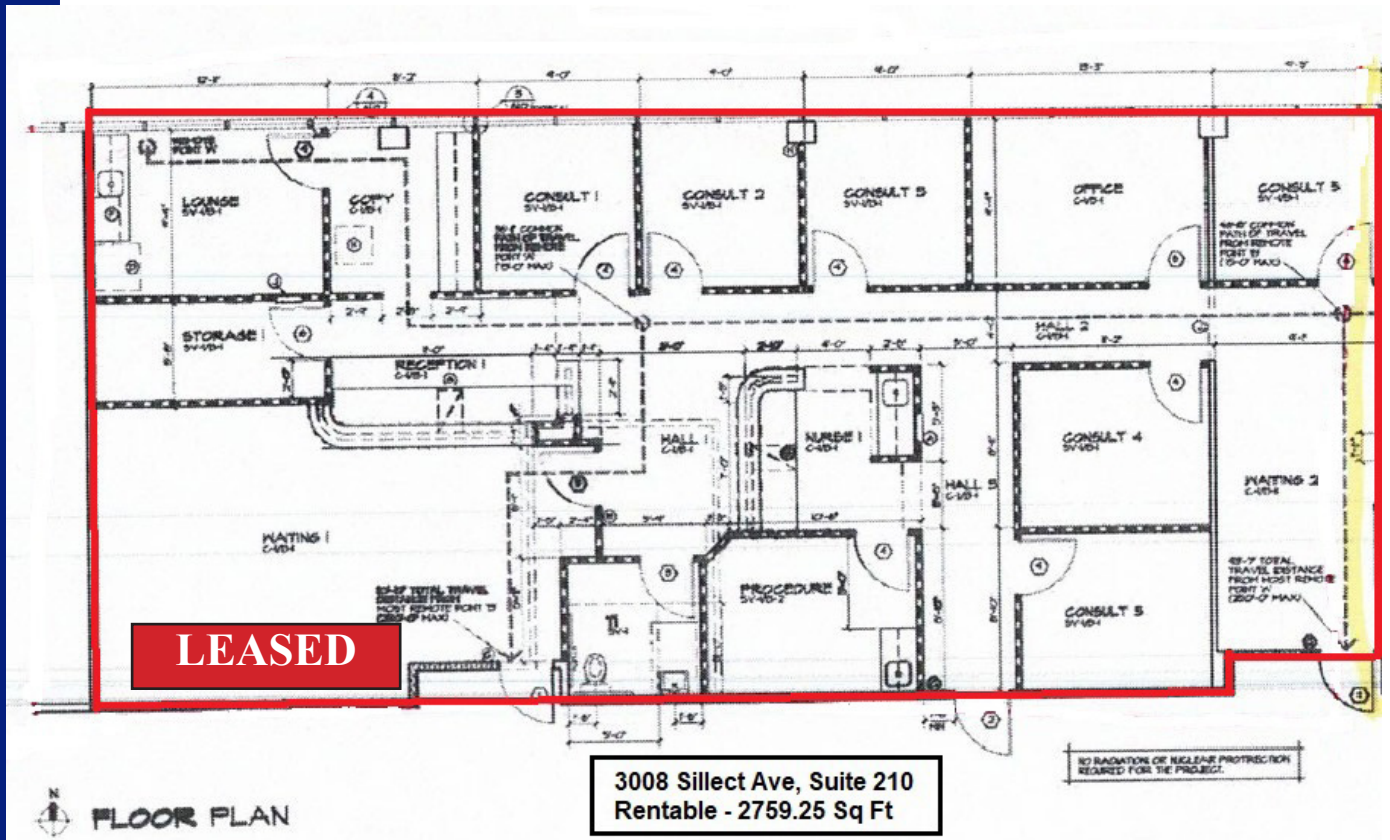
661 836 2345 office | 661 900 1596 cell
vreddy1@yahoo.com



COLDWELL BANKER
PREFERRED.
REALTORS®

MEDICAL OFFICE SPACES

3008 Sillect Ave - Bakersfield, CA



Vikram Reddy

Coldwell Banker Preferred, Realtors

DRE #01845883 | Co.DRE# 01100927

661 836 2345 office | 661 900 1596 cell

vreddy1@yahoo.com

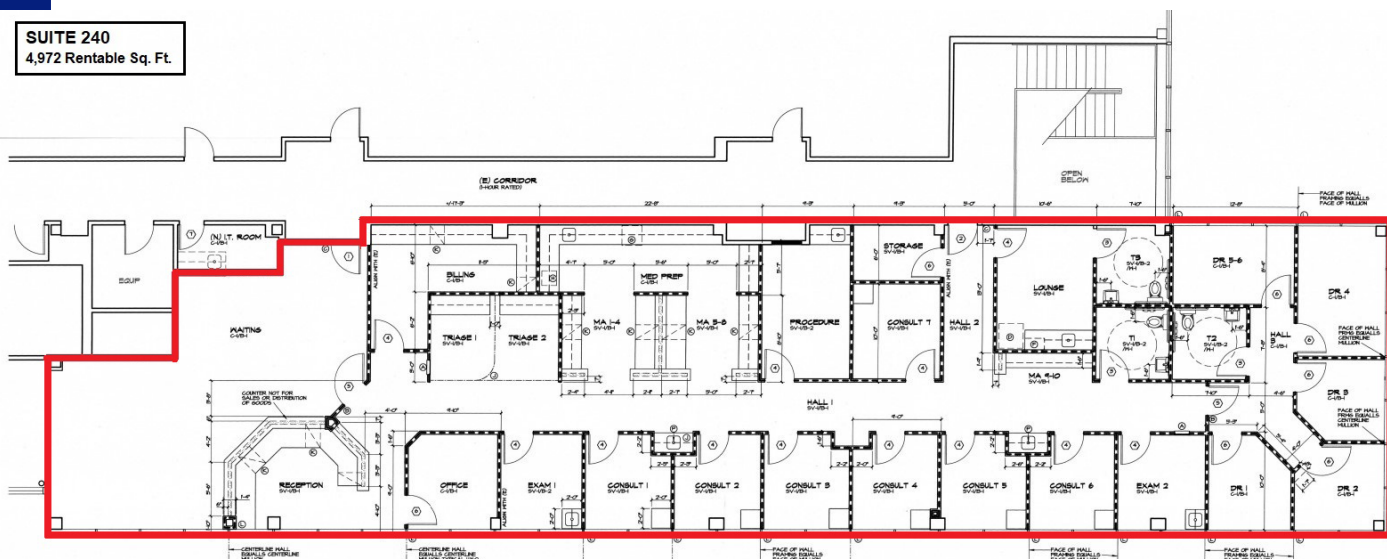


COLDWELL BANKER
PREFERRED.
REALTORS®

MEDICAL OFFICE SPACES

3008 Sillect Ave - Bakersfield, CA

SUITE 240
4,972 Rentable Sq. Ft.



Vikram Reddy

Coldwell Banker Preferred, Realtors

DRE #01845883 | Co.DRE# 01100927

661 836 2345 office | 661 900 1596 cell

vreddy1@yahoo.com



COLDWELL BANKER
PREFERRED.
REALTORS®

MEDICAL OFFICE SPACES

3008 Sillect Ave - Bakersfield, CA



Vikram Reddy

Coldwell Banker Preferred, Realtors

DRE #01845883 | Co.DRE# 01100927

661 836 2345 office | 661 900 1596 cell

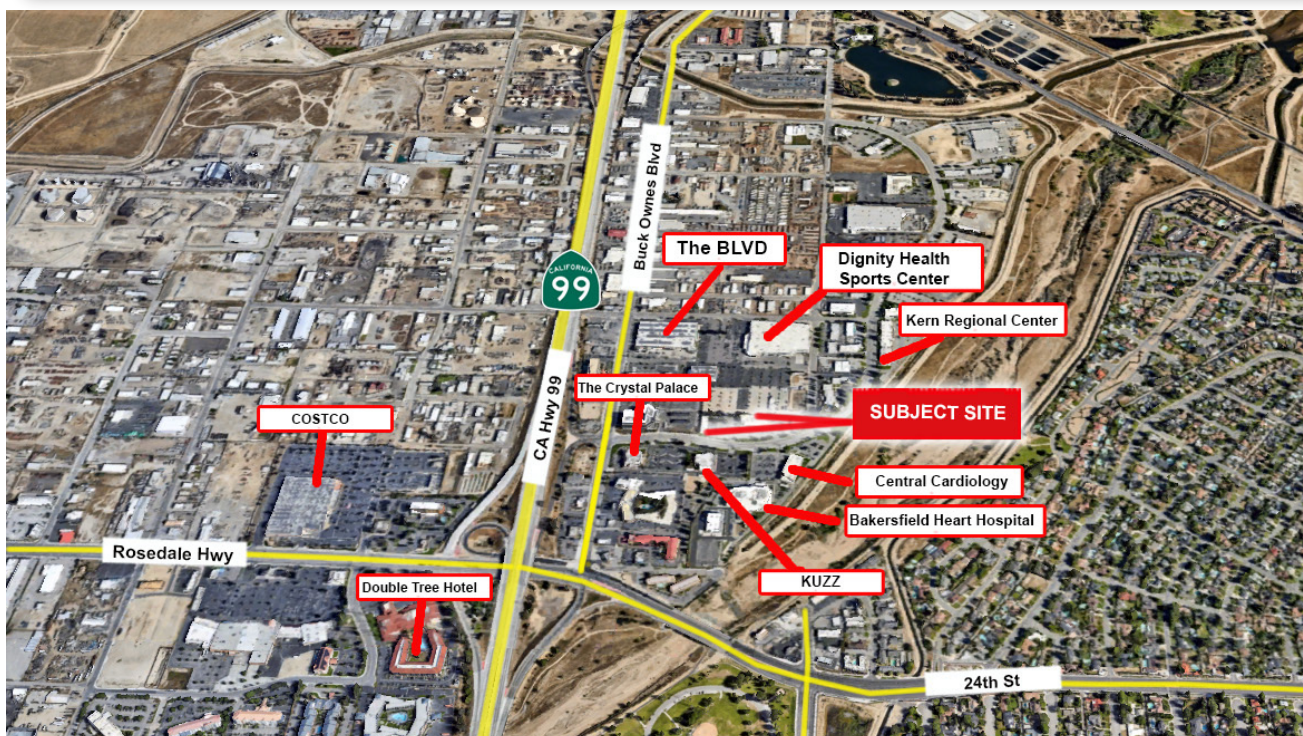
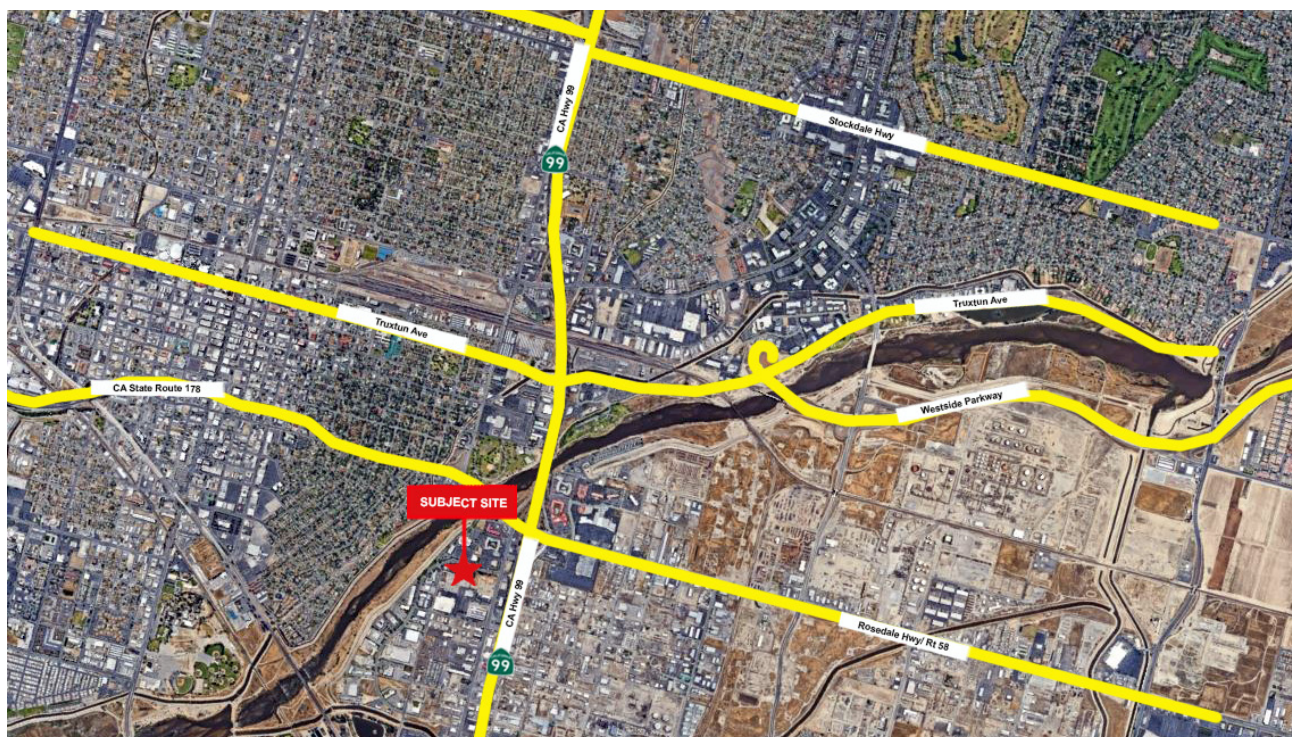
vreddy1@yahoo.com



COLDWELL BANKER
PREFERRED.
REALTORS®

MEDICAL OFFICE SPACES

3008 Sillect Ave - Bakersfield, CA



Vikram Reddy

Coldwell Banker Preferred, Realtors

DRE #01845883 | Co.DRE# 01100927

661 836 2345 office | 661 900 1596 cell

vreddy1@yahoo.com