

FOR LEASE

DOWNTOWN OFFICE SPACE

125 SF - 2,234 SF



PROPERTY ADDRESS

300 & 314 W. 15th Street
Vancouver, WA 98660

SPACES AVAILABLE

BUILDING 300
Suite 206, 207, 210 & 212
Private Executive Offices
Approximately 125 SF +/-
Lease Rate \$650 Per Month
Minimum 1-Year Term

BUILDING 314
Suite 200
2,234 SF +/- Space, Includes 2
Covered Reserved Parking Stalls
Lease Rate \$4,500 Per Month
Minimum 3-Year Term
Available: November 1, 2025

ZONING

City Center (CX)

LEASE TYPE

Full Service

BUILDING AMENITIES

- Class A, Professional Office Building
- Located Downtown Vancouver, Just One Block from New Seasons
- Use of 2nd & 3rd Floor Conference Rooms (subject to availability)
- Janitorial Service, 2 Days a Week
- Shared Common Area Kitchen/s
- Secured Building, Convenient Key Fob Access Provided For After Hours
- Elevator Served
- Common Area Restrooms
- Garage/Covered Guest Parking
- Shared WIFI Available for Additional Charge for Building 300 Suites
- Reserved Covered Parking Spaces for Building 314 Suite 200

CONTACT

Brandi M. Ho
360.823.5112
brandi@majcre.com

EXCLUSIVELY LISTED BY

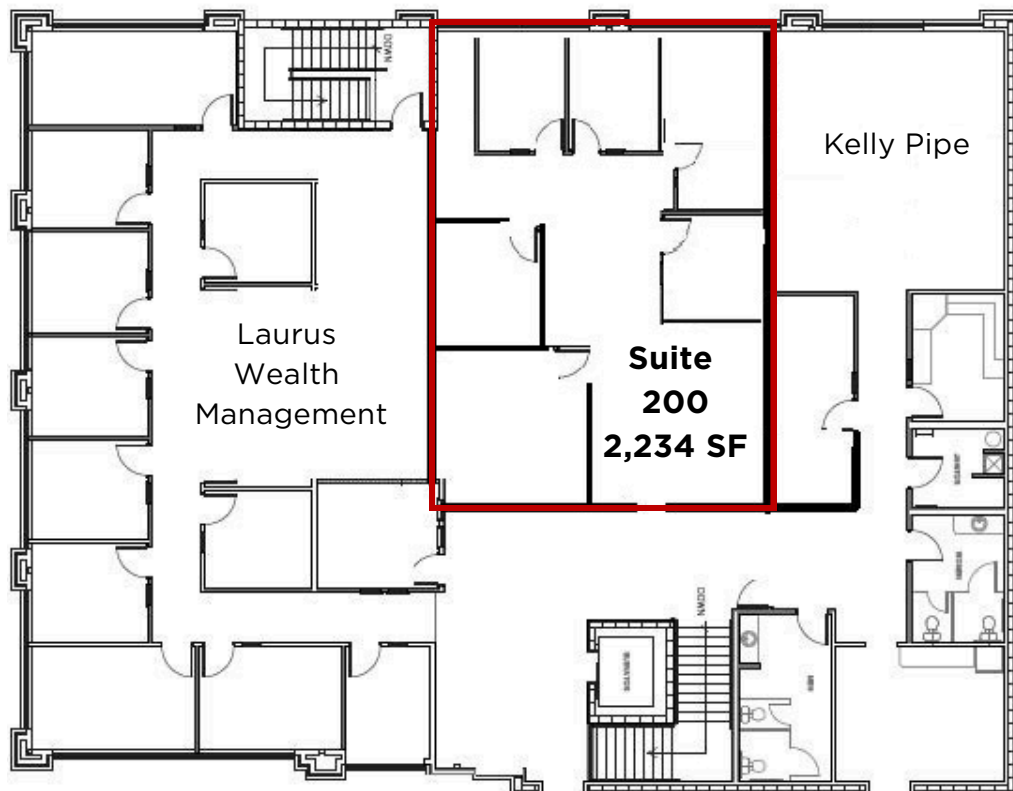
MAJ Commercial Real Estate
300 West 15th Street, Suite 200
Vancouver, Washington 98660



FLOOR PLAN | BUILDING 300, 2nd Floor, Suites 206, 207, 210 & 212



FLOOR PLAN | BUILDING 314, 2nd Floor, Suite 200



- Space is Currently Configured as 6 Individual/Private Offices and an Open/Waiting Area
- Building Co-Tenants are Laurus Wealth Management and Kelly Pipe
- Shared Restrooms
- Shared Kitchen Area
- 2 Reserved/Designated Parking Stalls in Covered Garage plus guess parking
- Professionally Managed by MAJ Commercial Real Estate