



RETAIL FOR LEASE

85 Atlanta Street

Historic Marietta Square
Rate \$21.50 NNN | 3,418 SF | 2 Floors

Downtown Marietta

- Charming downtown with brick sidewalks, shops, & restaurants
- Proximity to major attractions such as Kennesaw Mountain National Park, & the new Atlanta Braves Stadium.
- Just off the new Mountain to River Trail that runs from Kennesaw Mountain to the Chattahoochee River
- Convenient Access to I-75 and I-285

Property Highlights

- Newly renovated exterior
- 2 Blocks from Marietta Square
- 9+ Dedicated Parking Spots
- CBD Entertainment district "Open container for alcohol approved"
- The City of Marietta has proposed a traffic light at this location, with 10,000-14,000 cars passing daily
- Ready for Tenant Build Out

Great visibility and foot traffic with dedicated parking in downtown Marietta! With a total square footage of 3,418 SF and 9+ free parking spaces, come make this property your own by adding to the great mix of restaurants, bars, shops, offices, and residences.



85 Atlanta Street
Marietta, Georgia 30060

CONTACT

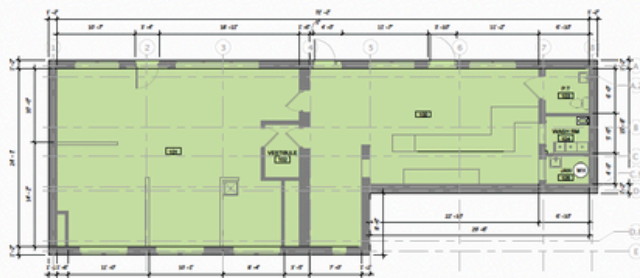
Chris Campbell | 912.682.8714 | chris@cecilcampbell.com



1,709 SF Street Level Retail with Newly Updated Exterior



1,709 SF Terrace Level Storage



1
FIRST FLOOR - DIMENSIONED PLAN - 1,709 GSF
1/8" = 1'-0"

2
BASEMENT - DIMENSIONED PLAN - 1,709 GSF
1/8" = 1'-0"

ALIGN

SCALE: 1/8" = 1'-0"

GROSS BUILDING AREA

PARTITION LEGEND	
[Symbol]	SOLID WALL - DISTING TO REMAIN
[Symbol]	GROSS BUILDING AREA
[Symbol]	NOTIN SCORE

Retail Space for Lease in Historic Marietta with 3,418 SF with 9+ Dedicated Parking Spaces Located in a Thriving Community with Restaurants, Bars, Shops, Offices, and Residences

 85 Atlanta Street
Marietta, Georgia 30060

CONTACT
Chris Campbell | 912.682.8714 | chris@cecilcampbell.com