

345 6TH STREET

FOR LEASE | HARD CORNER RETAIL / OFFICE SPACE IN SOMA

TCP
TOUCHSTONE
COMMERCIAL PARTNERS



WWW.TCPRE.COM

JARON ELIOPOULOS
415.608.6336 | jaron@tcpre.com

CAMERON TU
510.919.8193 | cameron@tcpre.com

345 6TH STREET

PROPERTY SUMMARY

ADDRESS

345 6th Street, San Francisco, CA 94107

AVAILABLE SPACE

+/- 790 Square Feet

RENTAL RATE

\$2,650 / Month, Industrial Gross

AVAILABLE

Immediately

BUILDING ATTRIBUTES

- + Double High Ceilings
- + Floor To Ceiling Windows Provide Excellent Natural Light
- + Polished Concrete Floor
- + Full HVAC
- + ADA Compliant Entrance
- + ADA Compliant Restroom
- + Warm Shell Condition
- + Hard Corner Location





345 6TH STREET
FLOOR PLAN
+/- 790 Square Feet



345 6TH STREET

LOCATION OVERVIEW

Located just steps from the city of San Francisco courthouse, the subject property is well located in a rapidly changing neighborhood.



08 MIN to 6th Street Muni
15 MIN to Civic Center Bart
15 MIN to Moscone Center



07 MIN to Union Square
09 MIN to Mission District
11 MIN to Financial District



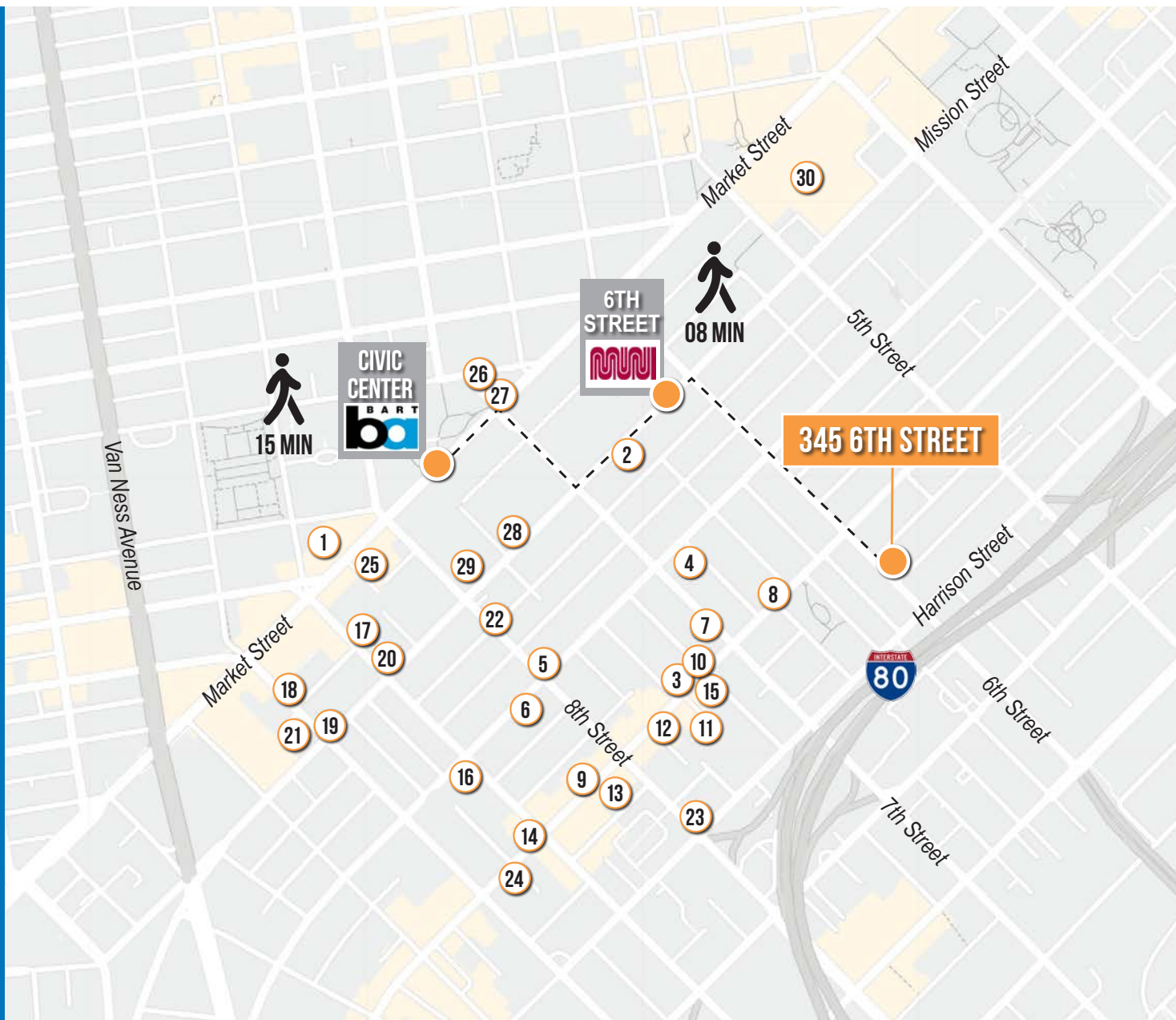
01 MIN to 80 On-Ramp
02 MIN to 280 On-Ramp
05 MIN to 101 On-Ramp



345 6TH STREET

NEARBY AMENITIES

- 1.....Sam's American Eatery
- 2.....Birdsong
- 3.....HK Lounge Bistro
- 4.....SF Champagne Society
- 5.....Harvest Urban Market
- 6.....Mike's Bikes SF
- 7.....Sightglass Coffee
- 8.....Deli Board
- 9.....Cafe Suspiro
- 10.....Decant SF
- 11.....Rocco's Cafe
- 12.....Basil
- 13.....Driftwood
- 14.....Northern China BBQ
- 15.....The Stud
- 16.....Metro Floors
- 17.....Pixlcat Coffee
- 18.....Fitness SF
- 19.....Cumaica Cafe
- 20.....Street Taco
- 21.....Peet's Coffee
- 22.....Sizzling Pot King
- 23.....AK Subs
- 24.....Powerhouse
- 25.....Starbucks
- 26.....Charmaine's Rooftop Bar
- 27.....Villon
- 28.....SOMA Grand Garage
- 29.....Trinity Garage
- 30.....Westfield SF Centre



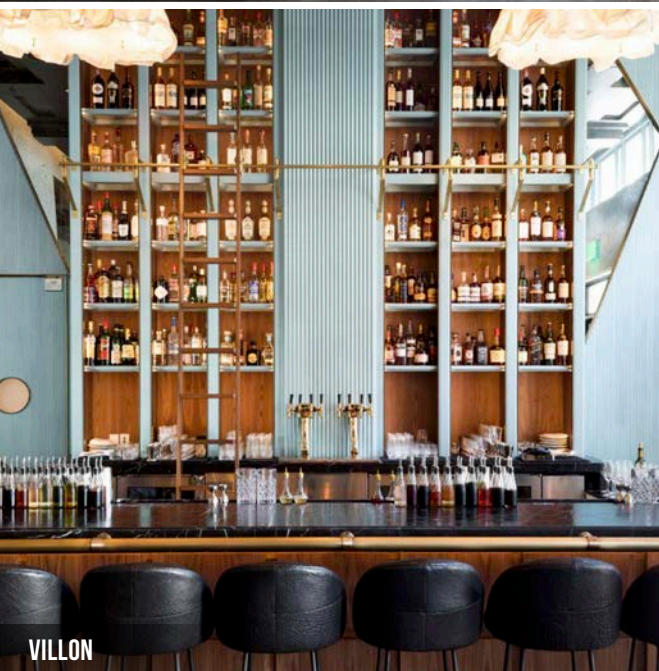
345 6TH STREET



SIGHTGLASS COFFEE



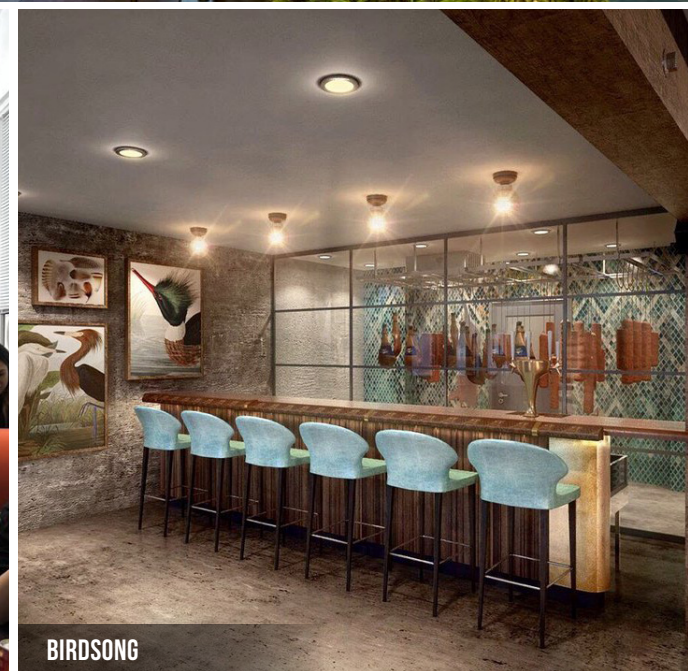
CHARMAINE'S ROOFTOP BAR



VILLON



SIZZLING POT KING



BIRDSONG

345 6TH STREET



Corp. Lic. 01112906
www.tcpre.com

JARON ELIOPOULOS DRE # 01975155
415.608.6336 | jaron@tcpre.com

CAMERON TU DRE # 02100436
510.919.8193 | cameron@tcpre.com

The information presented has been secured from sources we believe to be reliable but we make no representations or warranties, expressed or implied, as to the accuracy of the information. Lessee must verify the information and bears all risk for any inaccuracies.