

Seller Financing Available



±3,300 SF INDUSTRIAL CONDO
FOR SALE IN THE BAYVIEW DISTRICT

1190B SHAFTER AVE, SAN FRANCISCO, CA 94124

km Kidder
Mathews

1190B SHAFTER AVE

SINGLE-TENANT INVESTMENT OPPORTUNITY

1190B Shafter Avenue is an industrial condo in the Bayview neighborhood of San Francisco. The property will be delivered vacant and ready for immediate occupancy, making it ideal for businesses seeking a functional and flexible space for industrial, warehouse, or creative uses.

PROPERTY OVERVIEW

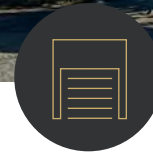
The size and layout of the the property accommodate a variety of light manufacturing, storage and distribution needs. The property's location offers excellent connectivity to major transportation routes such as Highway 101 and I-280, as well as proximity to Downtown San Francisco.

Zoned PDR-1-B (light industrial buffer), the property offers flexibility to a wide range of commercial applications.

Seller is offering owner financing, providing buyers with added purchasing flexibility and the ability to structure more favorable terms than conventional/SBA lenders.



**\$1,300,000
SALE PRICE**



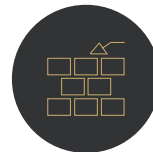
**±3,300 SF
BUILDING**



**SINGLE
TENANT**



**17'
CLEAR HEIGHT**



**1988/2021
BUILT/RENOV.**



**3-PHASE
250V/320A**



**PDR-1-B
ZONING**



**4786-083
PARCEL #**

1190B SHAFTER AVE

KEY BUILDING UPGRADES

1190B Shafter Ave has undergone a series of significant upgrades throughout, bringing the space to a tenant-ready standard.

HVAC systems on both levels

New garage door

Designated wood shop and garage areas

Connection of the two mezzanines to form a continuous second floor

Installed roof hatch

Replaced all doors

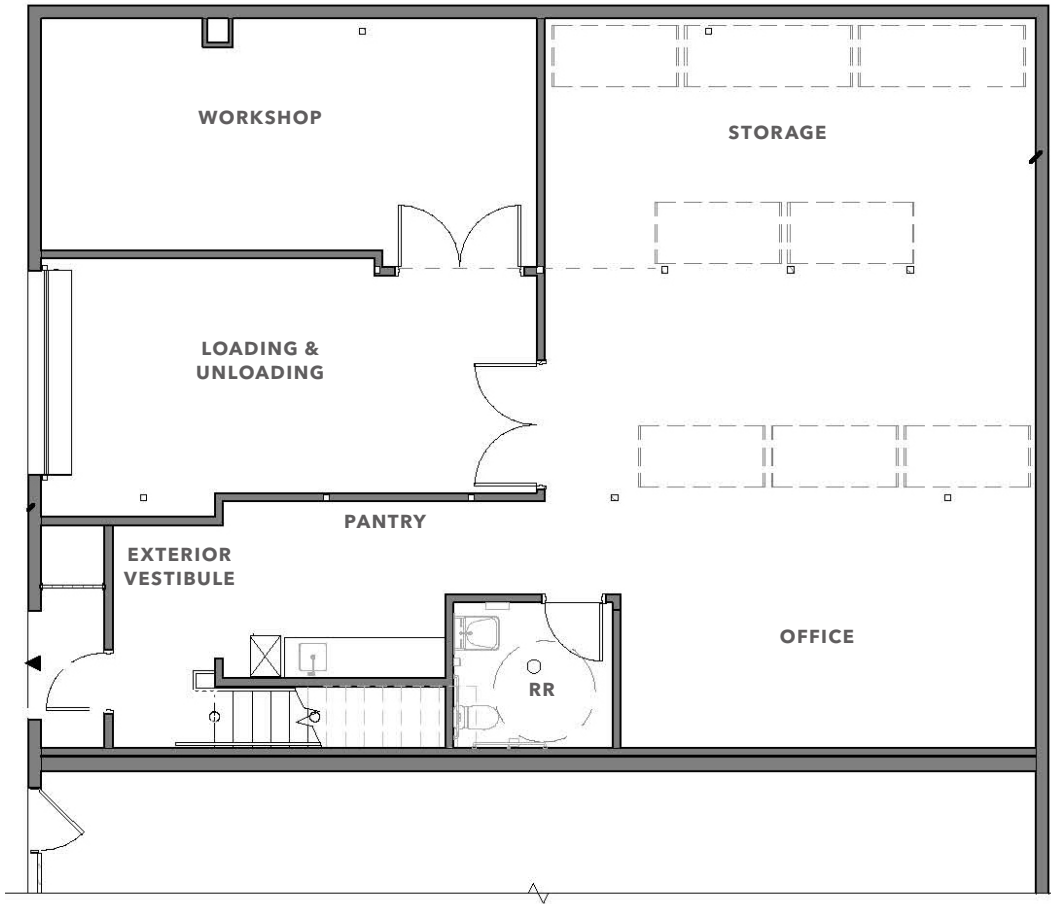
New lighting and electrical outlets, including the installation of phase 3 outlets



AVAILABLE FOR SALE

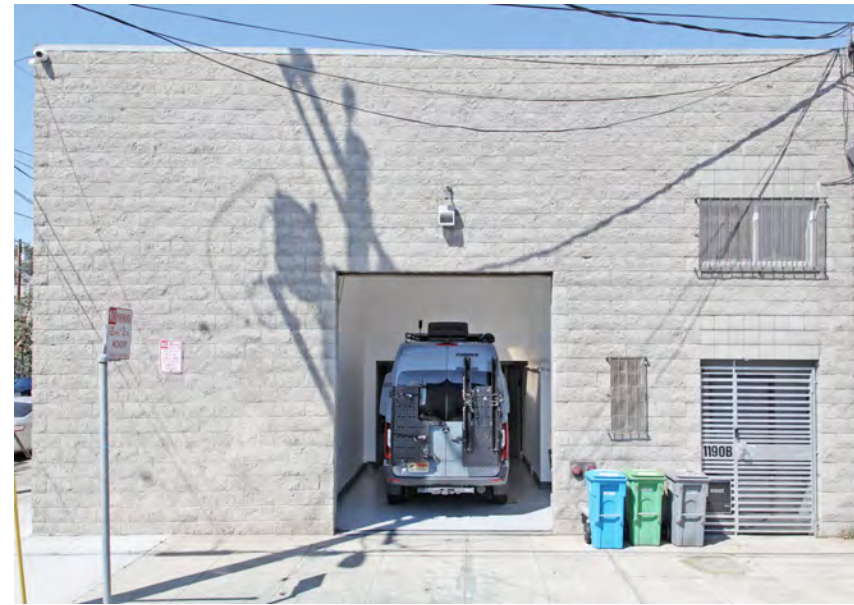
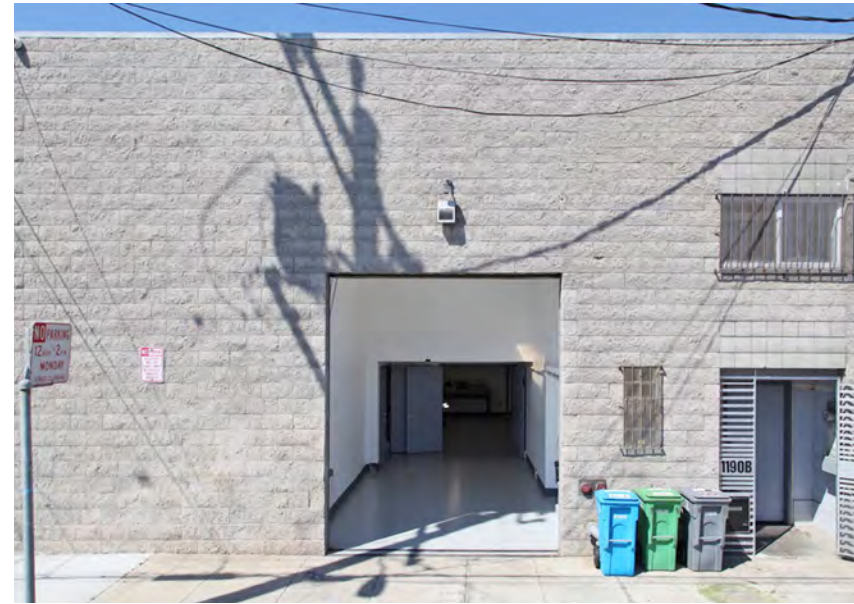
1190B SHAFTER AVE

FIRST FLOOR PLAN



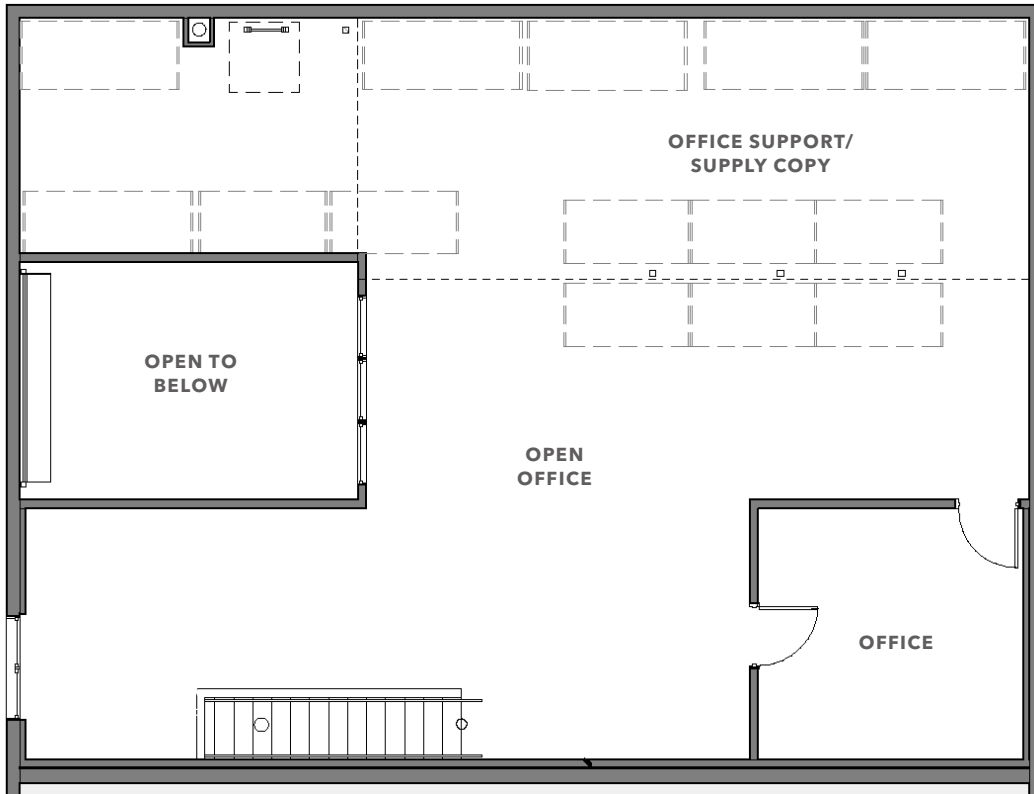
FLOOR PLAN NOT TO SCALE

AVAILABLE FOR SALE



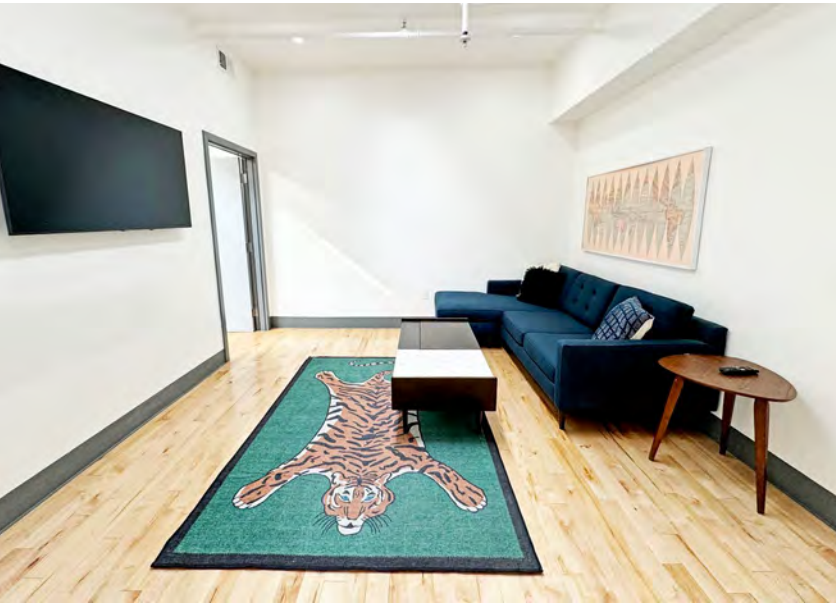
KIDDER MATHEWS

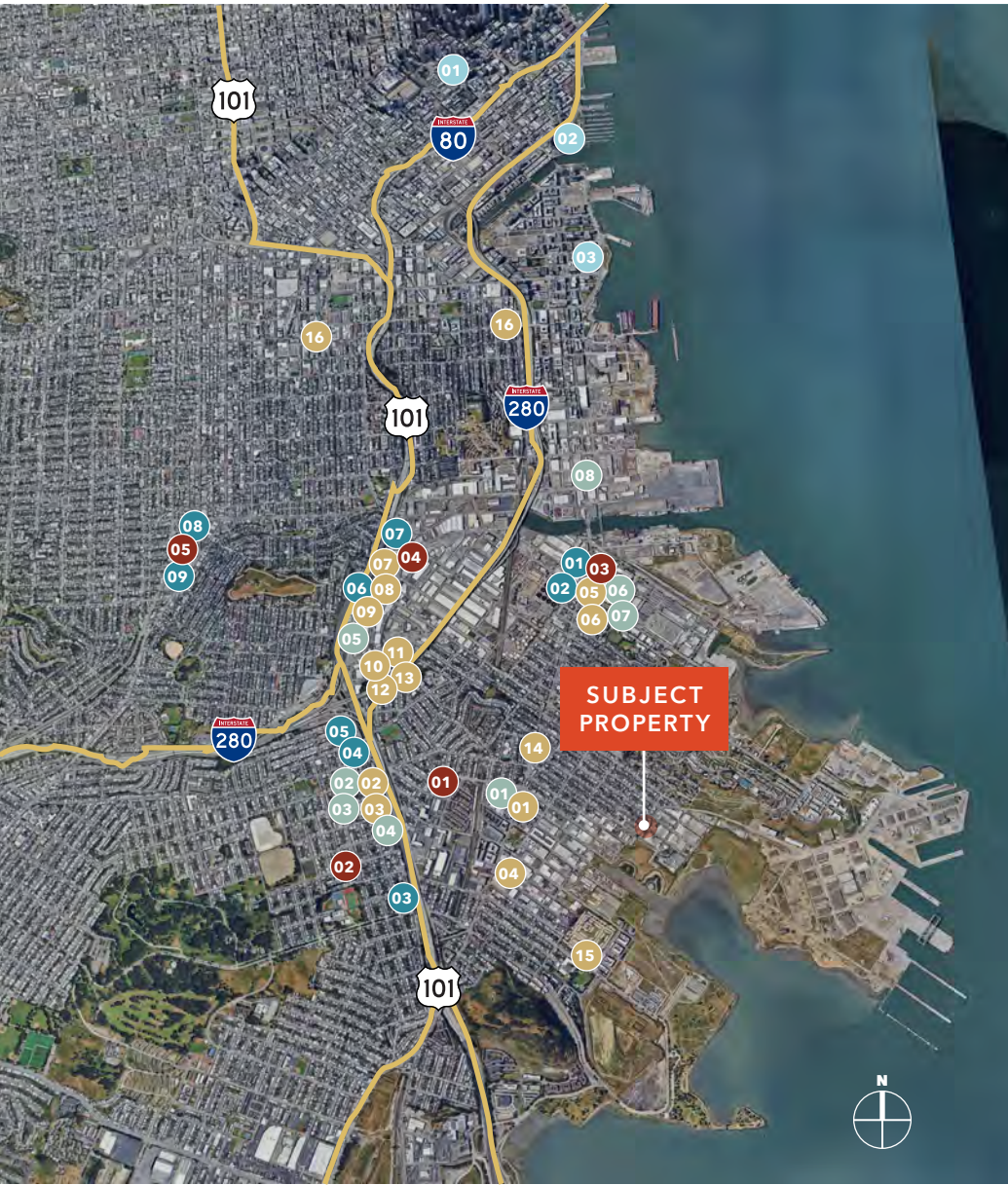
SECOND FLOOR PLAN



FLOOR PLAN NOT TO SCALE







EAT + DRINK

- 01 McDonalds
- 02 Subway
- 03 Round Table Pizza
- 04 Laughing Monk Brewing
- 05 Panda Express
- 06 Subway
- 07 Burger King
- 08 Domino's Pizza
- 09 Jack in the Box
- 10 Buffalo Wild Wings
- 11 Taco Bell
- 12 Little Cesars
- 13 Wing Stop
- 14 Gumbo Social
- 15 Two Jack's Seafood
- 16 Plow
- 17 Tartine Bakery

GROCERY STORES

- 01 Foods Co.
- 02 Grocery Outlet
- 03 Lucky
- 04 Grocery Outlet
- 05 Safeway

RETAIL & BANKS

- 01 Walgreens
- 02 Bank of America
- 03 Walgreens
- 04 BMO
- 05 Lowe's
- 06 US Bank
- 07 Wells Fargo
- 08 ACE Hardware

CONVENIENT STORES

- 01 Chevron
- 02 Texaco
- 03 Valero
- 04 76
- 05 Shell
- 06 Shell
- 07 Chevron
- 08 7-Eleven
- 09 Shell

ATTRACTIONS

- 01 Museum of Modern Art
- 02 Oracle Park
- 03 Chase Center

DEMOGRAPHICS

POPULATION

	1 Mile	3 Miles	5 Miles
2025 TOTAL	29,984	191,244	614,017
2030 PROJECTION	29,147	187,090	604,484
2020 CENSUS	33,043	211,759	642,520
2010 CENSUS	27,668	193,594	580,059

MEDIAN AGE & GENDER

	1 Mile	3 Miles	5 Miles
MEDIAN AGE	36.7	39.3	40.0
% FEMALE	50.7%	48.7%	46.2%
% MALE	49.3%	51.3%	53.8%

HOUSEHOLDS

	1 Mile	3 Miles	5 Miles
2025 TOTAL	9,411	66,655	255,102
2030 PROJECTED	9,204	65,764	254,224
2020 CENSUS	9,404	70,282	262,531
2010 CENSUS	8,067	64,573	238,607
OWNER-OCCUPIED	42.4%	47.7%	36.9%
RENTER-OCCUPIED	57.6%	52.3%	63.1%

INCOME

	1 Mile	3 Miles	5 Miles
2025 AVERAGE HH INCOME	\$137,754	\$216,731	\$213,426
2030 PROJECTED HH INCOME	\$138,996	\$217,380	\$213,992
ANNUAL CHANGE 2025 - 2030	0.2%	-	-

EMPLOYMENT

	1 Mile	3 Miles	5 Miles
TOTAL BUSINESSES	1,330	8,569	42,730
TOTAL EMPLOYEES	9,534	71,436	516,031
WHITE COLLAR WORKERS	8,822	77,199	268,908
BLUE COLLAR WORKERS	4,858	28,896	86,354

EDUCATION

	1 Mile	3 Miles	5 Miles
SOME HIGH SCHOOL	8.7%	5.5%	4.8%
HIGH SCHOOL DIPLOMA	22.1%	15.6%	13.3%
SOME COLLEGE	18.9%	13.7%	12.5%
ASSOCIATE	6.6%	5.9%	5.3%
BACHELOR'S	19.2%	28.7%	32.0%
GRADUATE	10.1%	20.5%	24.0%

Data Source: ©2025, Sites USA



1190B SHAFTER AVE

*For more information on
this property, please contact*

JOE CAMMARATA
650.678.1228
joe.cammarata@kidder.com
LIC N° 01366451

ERIC DEBRINE
650.465.8721
eric.debrine@kidder.com
LIC N° 02192983

KIDDER.COM

This information supplied herein is from sources we deem reliable. It is provided without any representation, warranty, or guarantee, expressed or implied as to its accuracy. Prospective Buyer or Tenant should conduct an independent investigation and verification of all matters deemed to be material, including, but not limited to, statements of income and expenses. Consult your attorney, accountant, or other professional advisor. All Kidder Mathews designs are the sole property of Kidder Mathews. Branded materials and layouts are not authorized for use by any other firm or person.

