

1620 EUCLID ST SANTA MONICA

FOR LEASE ±11,168 RSF
SHORT TERM OPPORTUNITY
STAND ALONE CREATIVE OFFICE BUILDING

redcar
development

INDUSTRY

INDUSTRYPARTNERS.COM
310 395 5151
CA BRE No. 01900833

SCOTT RIGSBY
sr@industrypartners.com
CA BRE No. 01252835

RICH MALOOF
rm@industrypartners.com
CA BRE No. 02009527

ELLIOT SCHWARTZ
es@industrypartners.com
CA BRE No. 02020686



CREATIVE OFFICE

DETAILS

BUILDING DETAILS

AVAILABLE AREA ± 11,168 RSF (total)

PARKING

RATE/PASS/Mo.

WHAT'S DIFFERENT

\$250

- Improvements:**
- Exposed ceilings with polished concrete floors
 - Steel operable windows inside-and-out
 - Multiple skylights provide bright interiors
 - Fully equipped kitchenette

LEASE TERMS

RATE \$2.95/SF per Mo. MG

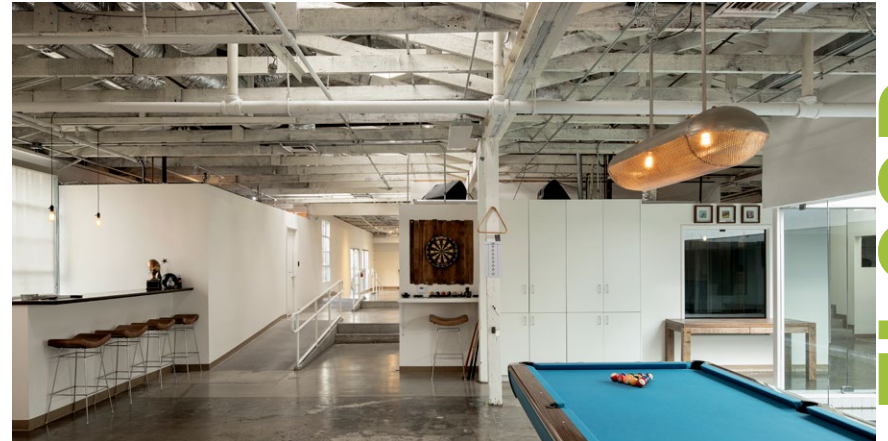
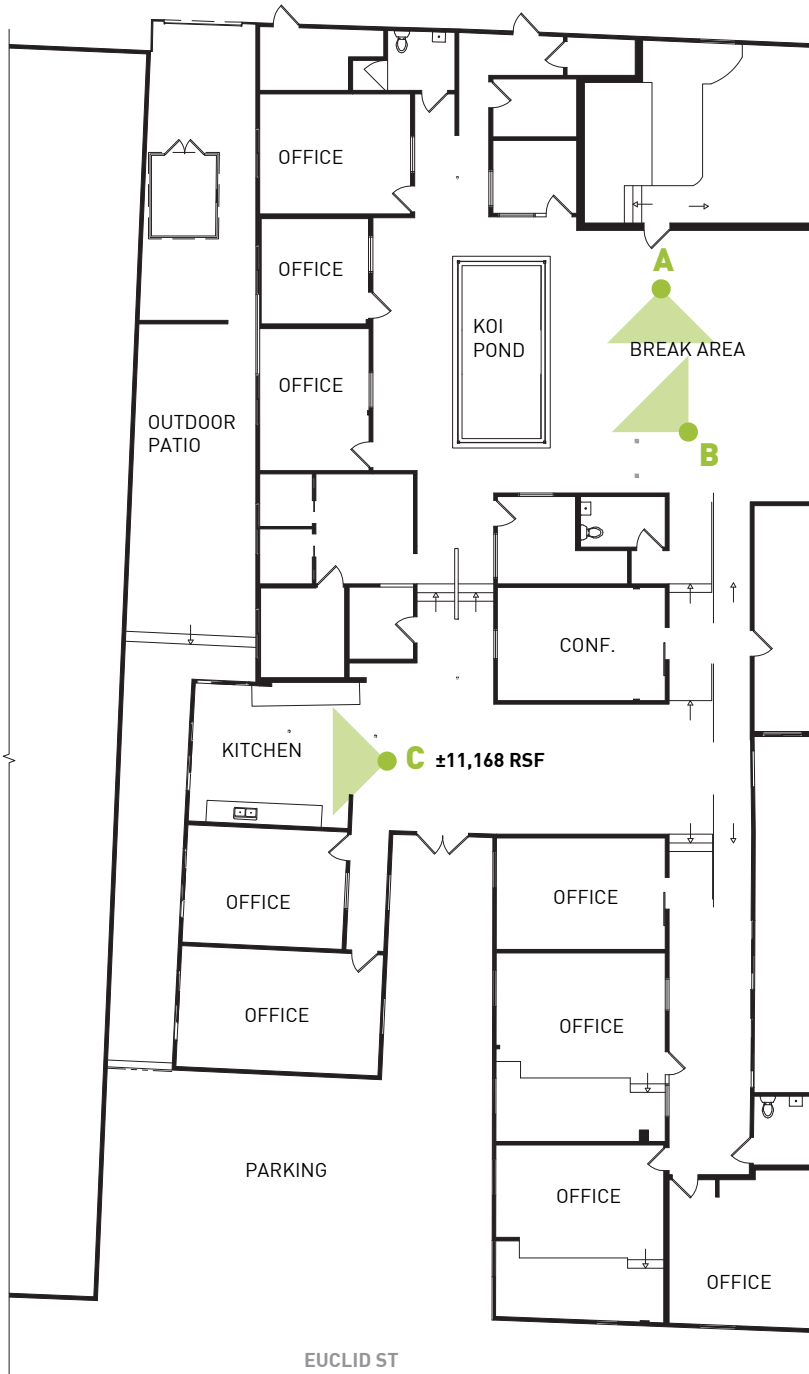
OCCUPANCY Immediate

TERM 2-3 Years

Location: Creative office building with outstanding Euclid Street location, steps away from 17th St/ Santa Monica College Expo Line Station

Design: Built with the highest quality materials for a productive and enjoyable work space

± 11,168 RSF TOTAL



A— BREAK AREA



B— BREAK AREA / KOI POND

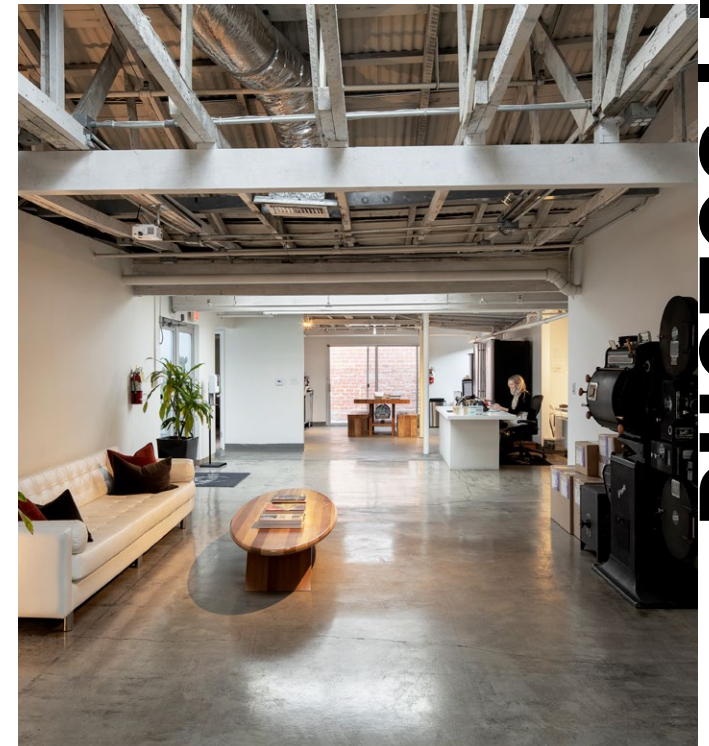


C— KITCHEN

FLOOR PLAN | 1ST FLOOR



INTERIOR



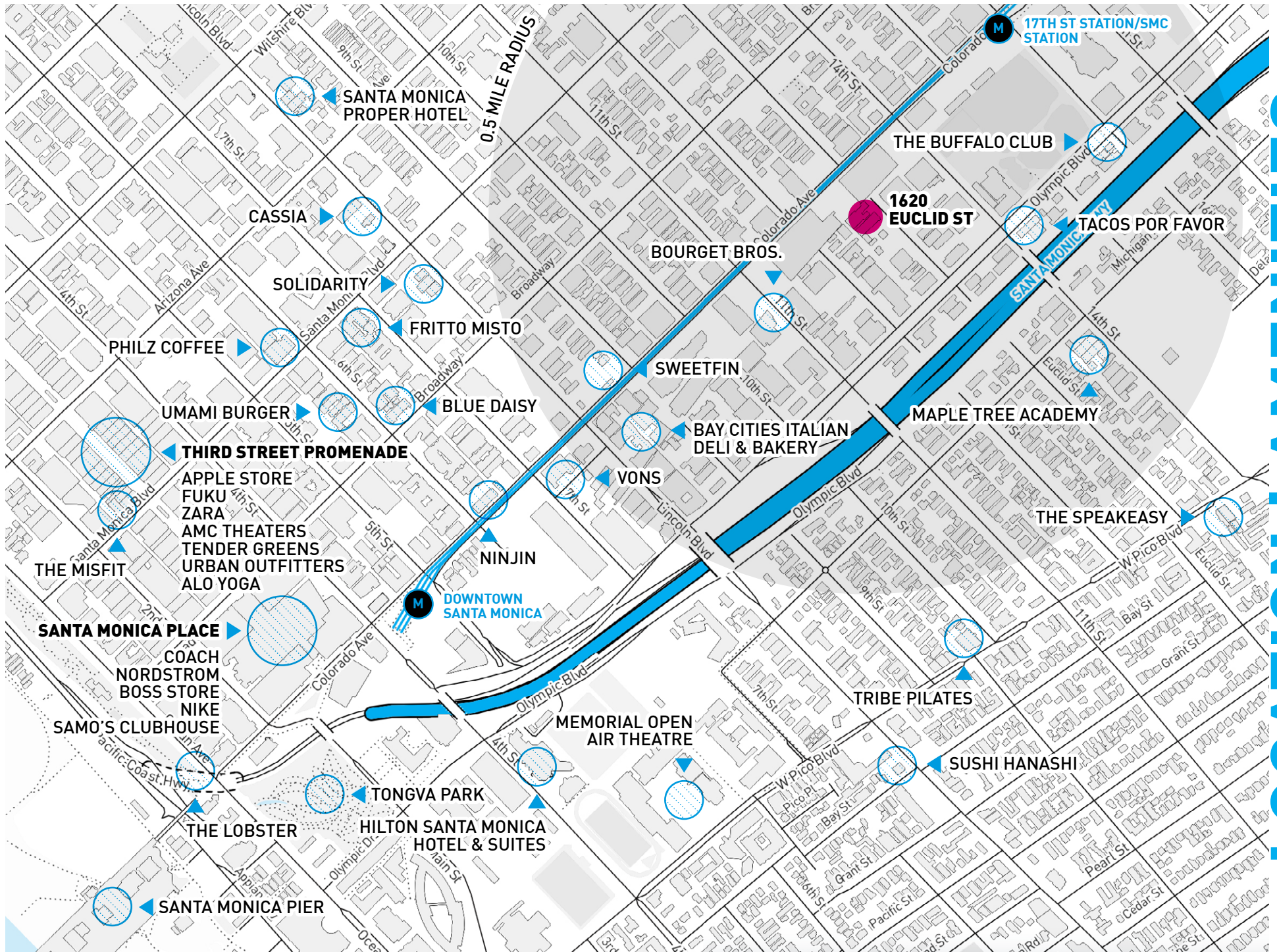
PHOTOS | INTERIOR



EXTERIOR

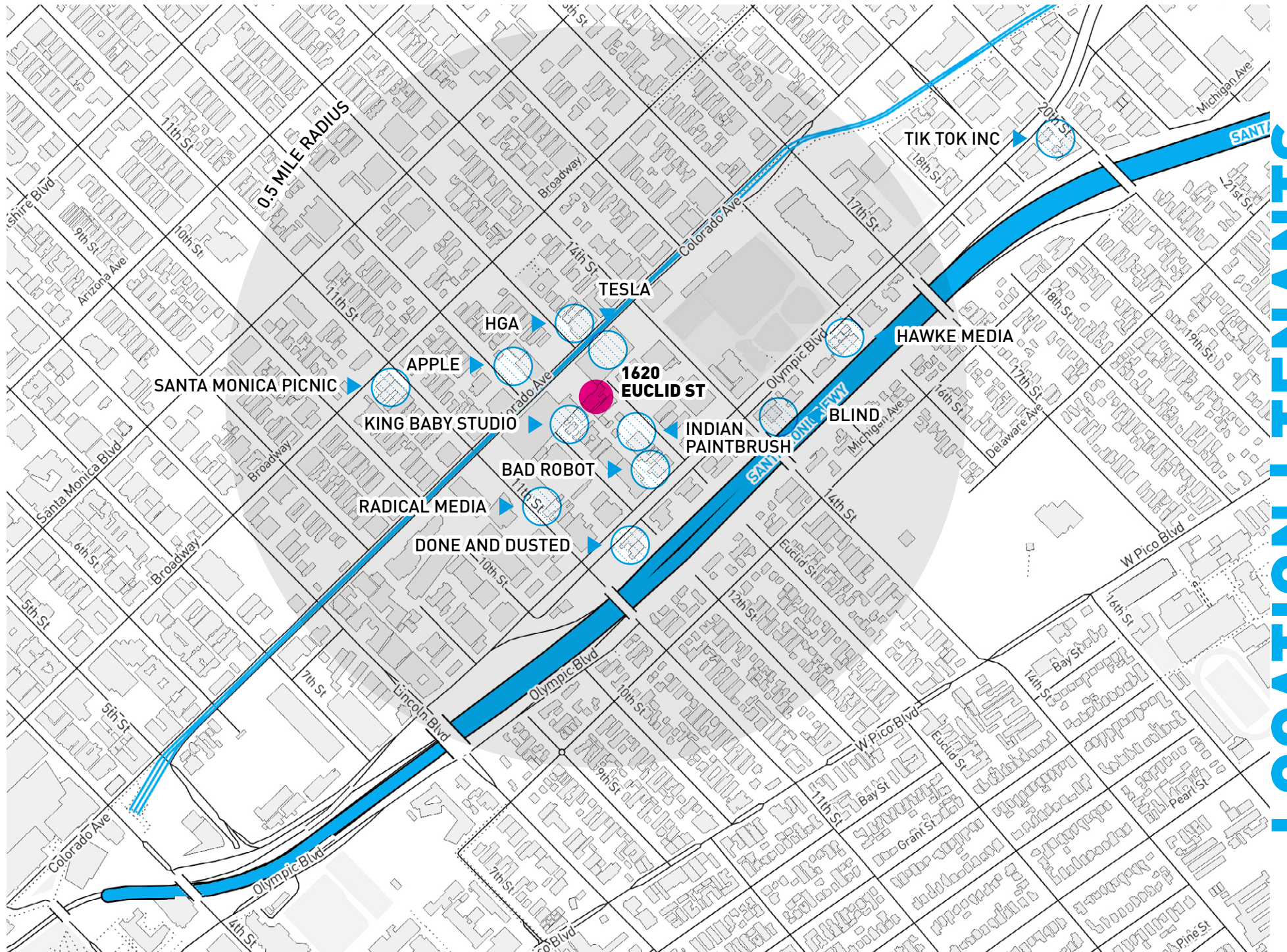
PHOTOS | EXTERIOR

SANTA MONICA MEDIA DISTRICT



LOCATION | AMENITIES

SANTA MONICA MEDIA DISTRICT



LOCATION | TENANTS