



MOVE-IN READY OFFICE SPACE

3,606 RSF



915 BROADWAY

BETWEEN THE PARKS

Southwest Corner of 21st Street & Broadway





Furniture shown for layout concept only


ABS Partners Real Estate, as the exclusive agent is pleased to offer the following opportunity for lease:

Suite 904: 3,606 rsf

- Move-in ready space with hardwood floors throughout and exposed ceiling
- Glass-front private workspaces – (1) windowed conference room, (1) meeting room/office, (3) collaborating/phone rooms
- Wet pantry with seating space and open area
- Oversized, operable windows provide good natural light and south, east and west exposures

Possession: March 1, 2026

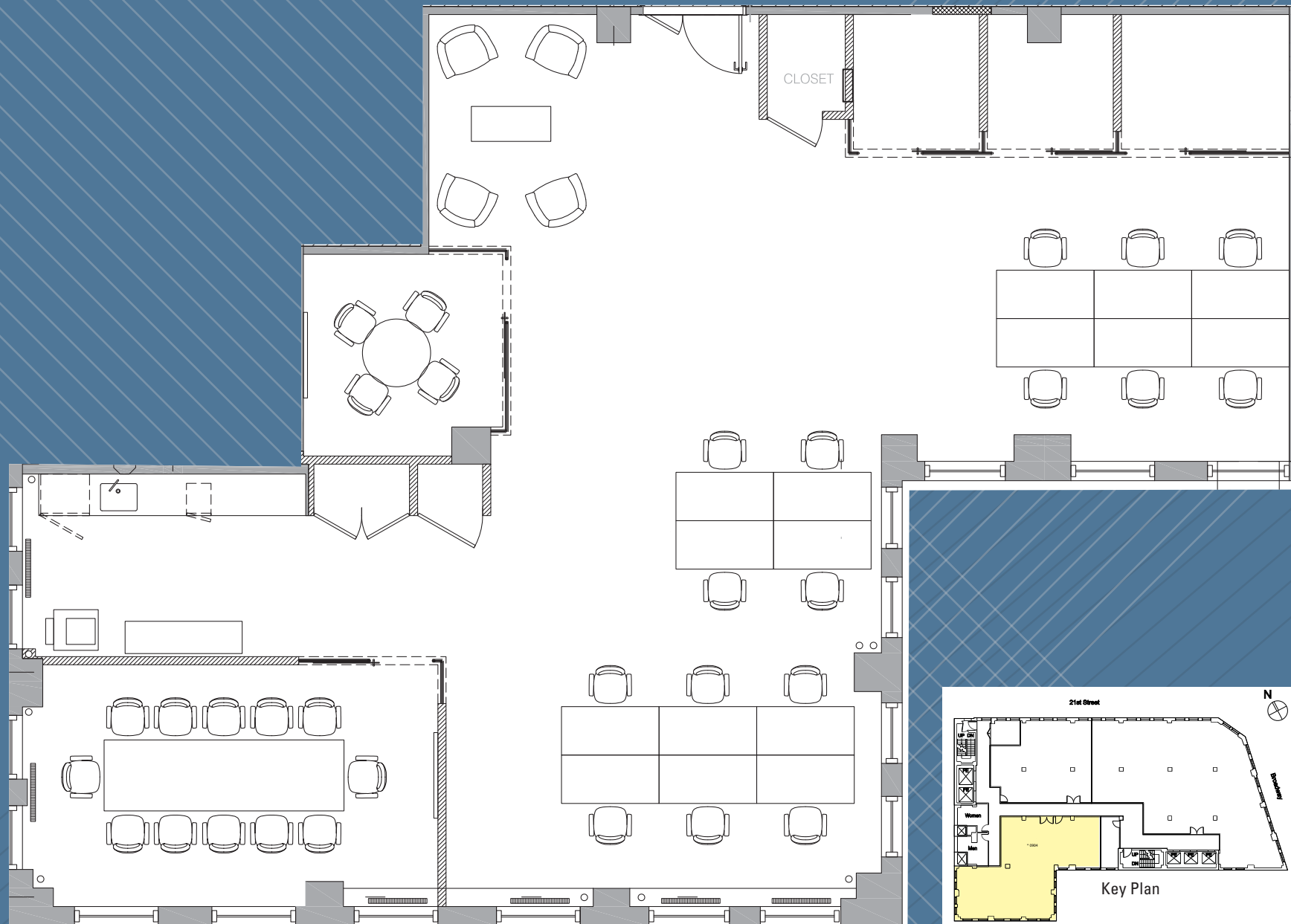
Rent: Call or email for info

- High speed fiber on each floor connected to a redundant fiber loop below the building
- Direct access to the Union Square transportation hub 4 5 6 L N Q R W express and local subway lines; and close proximity to NJ  station at 23rd St/6th Ave
- Centrally located between Union Square and Madison Square Park, the area offering a wide variety of services, retail, and dining options



SUITE 904 - 3,606 RSF  
(AS-BUILT PLAN)

[CLICK TO VIEW VIRTUAL TOUR](#)



*(Floor plan for descriptive purposes only; not to scale; Furniture shown for layout concept only)*

All information is from sources deemed reliable but is subject to errors or omissions of any magnitude, withdrawal from market, or changes in terms, all without notice. Brokers employment and payment only by written agreement.





Furniture shown for layout concept only





# Walk, Bike, Drive or Ride to Work & Play

Dine: ABC Kitchen, Barn Joo, Eataly, Gramercy Tavern, Novita, Merakia, Union Square Cafe, Whole Foods

Shop: Athleta, Design Within Reach, Jacadi, Nike, Saatva, Arc'teryx, Nordstrom Rack, Untuckit

Enjoy: The Parks, Union Square Farmers Market, Festivals, Soulcycle, Equinox, Uplift Studios

Neighbors: BuzzFeed, Dropbox, Facebook, IBM Resources, Mastercard, NYU, Santander, The Flatiron Building, W Hotel





