

FOR LEASE
200 East Main Street

BUILDING INFORMATION



BUILD TO SUIT OFFICE SPACES IN THE HEART OF DOWNTOWN REDEVELOPMENT



The redevelopment of Neisner's & McRory's will house the **Social Security Administration** and **Office of Disability Adjudication** on the second and third floors, and the **City of Rochester Traffic Violations Bureau** on the lower level. Parking is conveniently located in the Mortimer Street Garage directly behind the building.

AVAILABLE SPACE

First Floor 13,900 SF

Third Floor 7,000 SF

Main Street Frontage with AADT 13282

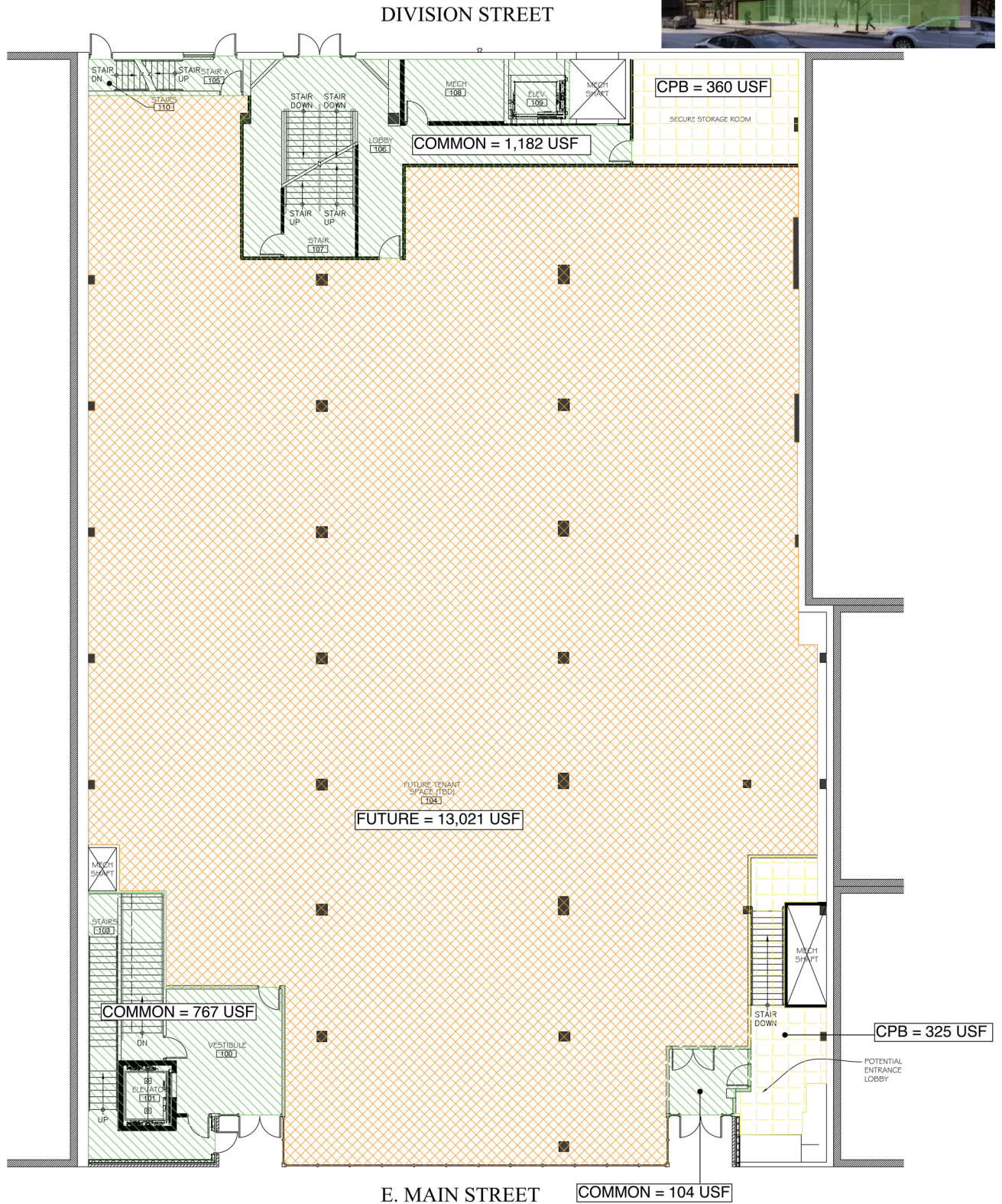
City infrastructure upgrades - Main Street Beautification Project

Elevator access at the front & rear entrances

City grants & low interest loans available for eligible businesses

FOR LEASE | FIRST FLOOR PLAN

200 East Main Street



THIRD FLOOR PLAN

