

Shirley

FILED
Apr. 7, 1982
ROBERT W. AND
Courtly Clerk
By *A. Deuser*
Deputy

ORDINANCE NO. *1224*

A SPECIAL ORDINANCE AMENDING SECTION 17.06.020
OF THE TUOLUMNE COUNTY ORDINANCE CODE BY ESTABLISHING
THE BOUNDARIES OF ZONING DISTRICTS UNDER THE
TUOLUMNE COUNTY UNIFORM ZONING ORDINANCE

- 0 - 0 -

The Board of Supervisors of the County of Tuolumne
do ordain as follows:

Sugar Pine

SECTION 1: Section 17.06.020 of the Tuolumne County
Ordinance Code is hereby amended by the establishment of
those districts as shown on Exhibits "A-1" and "A-2"
hereof, attached hereto and by this reference made a part
hereof.

Mi-Wuk

SECTION 2: Section 17.06.020 of the Tuolumne County
Ordinance Code is hereby amended by the establishment of
those districts as shown on Exhibit "B-1" hereof, attached
hereto and by this reference made a part hereof.

Said Section 17.06.020 is hereby further amended by
the establishment of those districts as shown on Exhibit
"B-2" hereof, attached hereto and by this reference made
a part hereof.

*Sierra
Parks*

SECTION 3: Section 17.06.020 of the Tuolumne County
Ordinance Code is hereby amended by the addition thereto
of the map of Sierra Parks Subdivision No. 1 filed in the
Office of the Tuolumne County Recorder in Book 9 of Plats

[REDACTED]

at pages 16 and 17; said map is hereby incorporated herein by reference and the territory included within Block 1, Lots 1 through 14; Block 2, Lots 1 through 5; Block 3, Lots 1 through 8; Block 4, Lots 1 through 6, and all that territory within Tuolumne County Assessor's Parcel No. 46-120-05 are hereby designated and established as a SINGLE FAMILY RESIDENTIAL, TRAILER EXCLUSION COMBINING (R-1:TX) DISTRICT.

Sierra Village

SECTION 4: Section 17.06.020 of the Tuolumne County Ordinance Code is hereby amended by the addition thereto of the map of Sierra Village Subdivision No. 1 filed in Book 15 of Plats at pages 29 and 30; said map is hereby incorporated herein by reference and the territory included within Lots 1 through 24, 26 through 99, and all that territory within Tuolumne County Assessor's Parcel Nos. 28-261-02 and 28-261-20 are hereby designated and established as a SINGLE FAMILY RESIDENTIAL, TRAILER EXCLUSION COMBINING (R-1:TX) DISTRICT.

Odd Fellows Sierra Camp

SECTION 5: Section 17.06.020 of the Tuolumne County Ordinance Code is hereby amended by the addition thereto of the map of Odd Fellows Sierra Camp No. 1 filed in Book 10 of Plats at pages 44 through 48 inclusive; said map is hereby incorporated herein by reference and the territory included within Block 1 through 3, Lots 1 through 90; Blocks 9 through 18, Lots 1 through 75, 77 through 173; Blocks 19

through 28, Lots 1 through 33, 35 through 94; and all that territory within Tuolumne County Assessor's Parcel Nos. 31-021-23, 31-091-07 and 31-091-08 are hereby designated and established as a SINGLE FAMILY RESIDENTIAL, TRAILER EXCLUSION COMBINING (R-1:TX) DISTRICT.

Said Section 17.06.020 is hereby further amended by the addition of the map of Odd Fellows No 2 filed in Book 14 of Plats at page 99, said map is hereby incorporated herein by reference and the territory included within Lots A through H are hereby designated and established as a SINGLE FAMILY RESIDENTIAL, TRAILER EXCLUSION COMBINING (R-1:TX) DISTRICT.

Said Section 17.06.020 is hereby further amended by the establishment of a GENERAL RECREATIONAL (K) DISTRICT comprising all that territory within Tuolumne County Assessor's Parcel No. 31-010-11.

Claredon
SECTION 6: Section 17.06.020 of the Tuolumne County Ordinance Code is hereby amended by the addition thereto of the map of Claredon Subdivision filed in Volume 1 of Subdivisions at pages 1 and 2, said map is hereby incorporated herein by reference and the territory included within Lots 1 through 25 is hereby designated and established as a SINGLE FAMILY RESIDENTIAL (R-1) DISTRICT.

Sherwood Forest
SECTION 7: Section 17.06.020 of the Tuolumne County Ordinance Code is hereby amended by the addition thereto of the map of Sherwood Forest Subdivision Unit No. 1 filed

in Book 15 of Plats at pages 1 and 2, said map is hereby incorporated herein by reference and the territory included within Lots 1 through 34, and all that territory within Tuolumne County Assessor's Parcel No. 48-350-17 are hereby designated and established as a SINGLE FAMILY RESIDENTIAL, TRAILER EXCLUSION COMBINING (R-1:TX) DISTRICT.

Said Section 17.06.020 is hereby further amended by the addition thereto of the map of Sherwood Forest Subdivision Unit No. 2 filed in Volume 1 of Subdivisions at pages 81 through 85 inclusive; said map is hereby incorporated herein by reference and the territory included within Lots 1 through 58, 60 through 79 and all that territory within Tuolumne County Assessor's Parcel Nos. 48-472-05, 48-472-07, 48-472-08, 48-473-09 and 48-481-08 are hereby designated and established as a SINGLE FAMILY RESIDENTIAL, TRAILER EXCLUSION COMBINING (R-1:TX) DISTRICT.

Said Section 17.06.020 is hereby further amended by the establishment of a RESIDENTIAL ESTATE, TWO ACRF MINIMUM, TRAILER EXCLUSION COMBINING (RE-2:TX) DISTRICT comprising all that territory within Tuolumne County Assessor's Parcel Nos. 48-474-01 and 48-475-15.

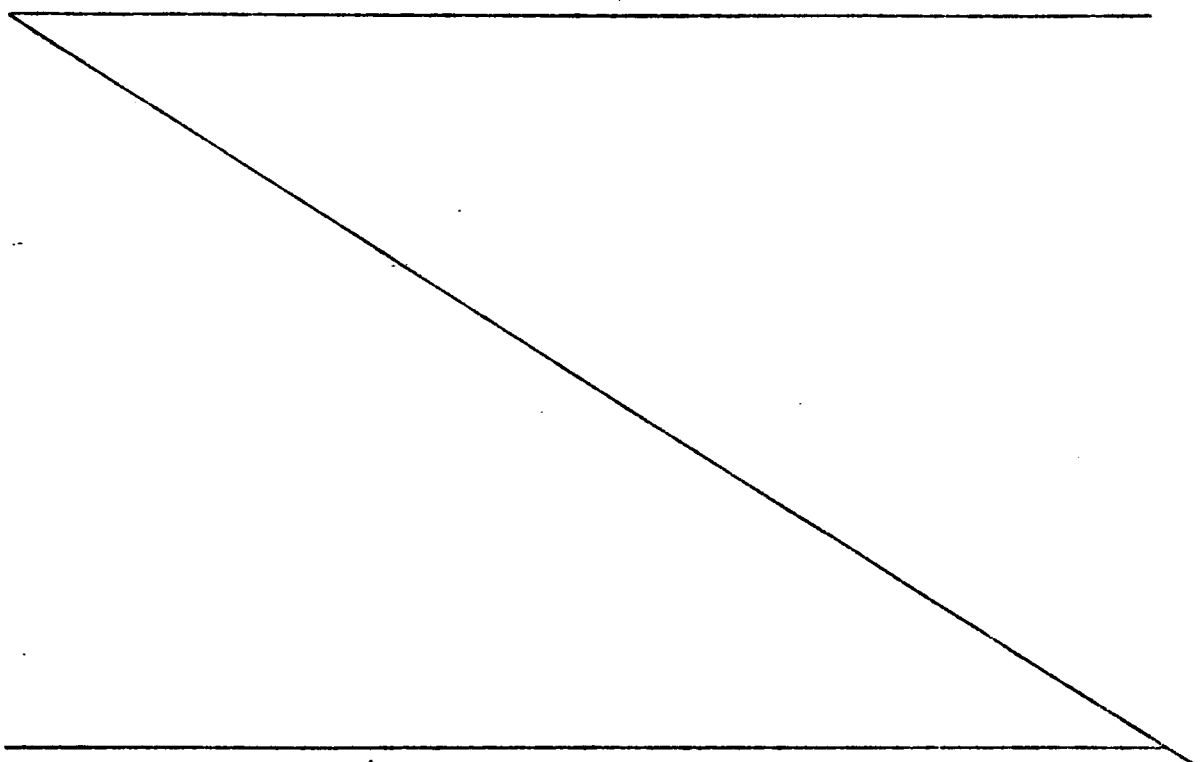
Said Section 17.06.020 is hereby further amended by the establishment of a GENERAL RECREATIONAL (K) DISTRICT comprising all that territory within Tuolumne County Assessor's Parcel Nos. 48-474-02 and 48-462-01.

Confidence

SECTION 8: Section 17.06.020 of the Tuolumne County Ordinance Code is hereby amended by the addition thereto of the map of Confidence Ridge Subdivision Unit 1 filed in Volume 1 of Subdivisions at pages 20 and 21, said map is hereby incorporated herein by reference and the territory included within Lots 1 through 71 is hereby designated and established as a SINGLE FAMILY RESIDENTIAL, TRAILER EXCLUSION COMBINING (R-1:TX) DISTRICT.

Cedar Springs

SECTION 9: Section 17.06.020 of the Tuolumne County Ordinance Code is hereby amended by the addition thereto of the map of Cedar Springs Subdivision filed in Book 4A of Plats at page 66, said map is hereby incorporated herein by reference and the territory included within Lots 1 through 21 is hereby designated and established as a RESIDENTIAL ESTATE, TWO ACRE MINIMUM (RE-2) DISTRICT.



SECTION 10 : All Ordinances of the County of Tuolumne or portions thereof in conflict herewith are hereby repealed.

SECTION 11 : If any provision of this Ordinance or the application thereof to any person or circumstances is for any reason held invalid, such invalidity shall not affect other provisions or applications of the Ordinance which can be given effect without the invalid provision or application thereof, and to this end the provisions of this Ordinance are severable.

SECTION 12: This Ordinance shall take effect thirty (30) days after its adoption. The Clerk of the Board of Supervisors is hereby authorized and directed to cause this Ordinance to be published once in the Union Democrat, a newspaper of general circulation printed and published in the County of Tuolumne, State of California, prior to fifteen (15) days after its passage.

After holding public hearings as required by law, the foregoing Ordinance passed and adopted at a regular meeting of the Board of Supervisors of the County of Tuolumne, State of California, on this 7th day of September, 1982, by the following vote, to wit:

AYES: Mildred Filiberti NOES: None

Billy H. Mann
Clyde W. May
William Edwards

ABSENT: Sidney H. Hatten

Clyde W. May
CLYDE W. MAY, Chairman,
Board of Supervisors, County of
Tuolumne, State of California

ATTEST: ROBERT W. ANDRE',
County Clerk and ex-officio
Clerk of the Board of Supervisors

By Lucy Schwartz (SEAL)
Deputy

APPROVED AS TO FORM:

STEPHEN DIETRICH, JR.
County Counsel

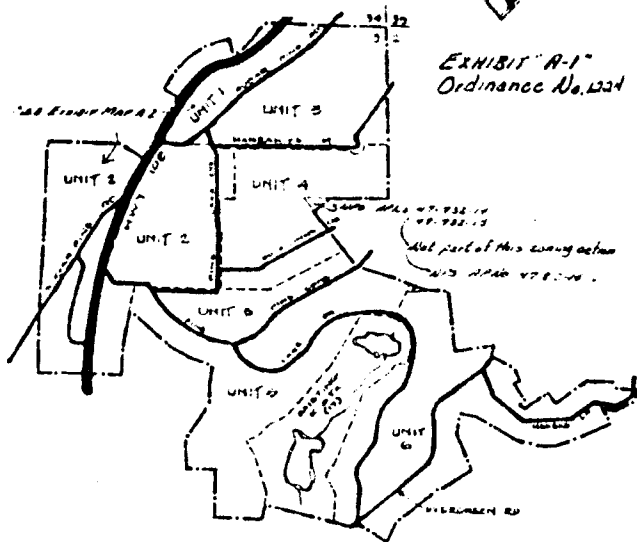
By Leo J. Faulstich
LEO J. FAULSTICH
Deputy County Counsel

SUGAR PINE SUBDIVISION UNITS 1-6
SEC 219 T2N R10E

UNITS 1 & 2 - 559 MAP A-2
UNITS 3, 4, 5 & 6 - R1 TA (17)

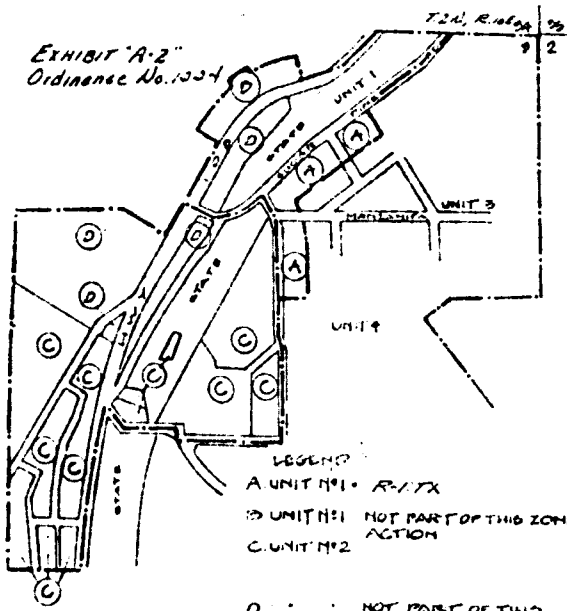


EXHIBIT "A-1"
Ordinance No. 1224



LEGEND
ROADS
UNIT BOUNDARY

EXHIBIT "A-2"
Ordinance No. 1554



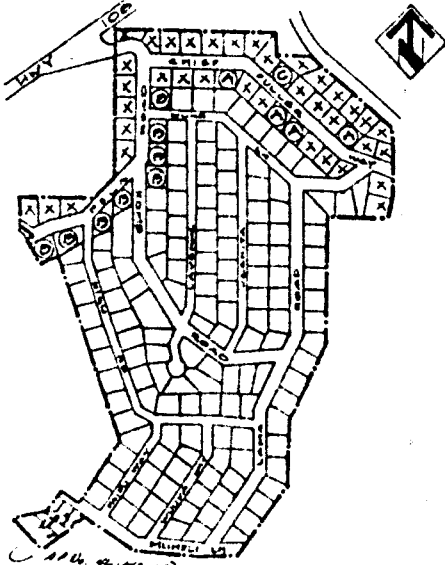
MI-WUK VILLAGE #1

906 99 TON RIG

EXHIBIT B-1
Ordinance No. 1224

R-1 TX Zoning District
EXCPT
A R-2 TA (17)
B R-2 TA (17)
C R-2 TA (17)

X = NOT PART OF THIS ZONING ACTION



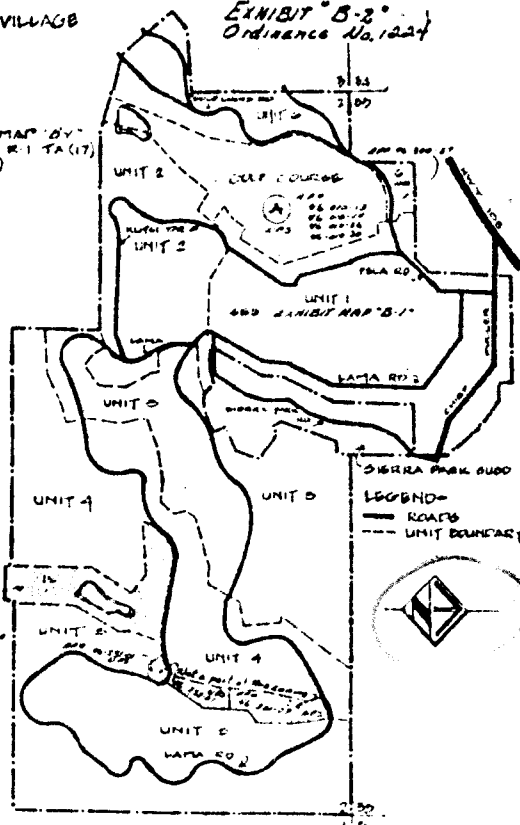
16-102-01
16-102-02
16-102-03
16-102-04
16-102-05
16-102-06
16-102-07
16-102-08
16-102-09
16-102-10
16-102-11
16-102-12
16-102-13
16-102-14
16-102-15
16-102-16
16-102-17
16-102-18
16-102-19
16-102-20
16-102-21
16-102-22
16-102-23
16-102-24
16-102-25
16-102-26
16-102-27
16-102-28
16-102-29
16-102-30
16-102-31
16-102-32
16-102-33
16-102-34
16-102-35
16-102-36
16-102-37
16-102-38
16-102-39
16-102-40
16-102-41
16-102-42
16-102-43
16-102-44
16-102-45
16-102-46
16-102-47
16-102-48
16-102-49
16-102-50
16-102-51
16-102-52
16-102-53
16-102-54
16-102-55
16-102-56
16-102-57
16-102-58
16-102-59
16-102-60
16-102-61
16-102-62
16-102-63
16-102-64
16-102-65
16-102-66
16-102-67
16-102-68
16-102-69
16-102-70
16-102-71
16-102-72
16-102-73
16-102-74
16-102-75
16-102-76
16-102-77
16-102-78
16-102-79
16-102-80
16-102-81
16-102-82
16-102-83
16-102-84
16-102-85
16-102-86
16-102-87
16-102-88
16-102-89
16-102-90
16-102-91
16-102-92
16-102-93
16-102-94
16-102-95
16-102-96
16-102-97
16-102-98
16-102-99
16-102-100

16-102-01
16-102-02
16-102-03
16-102-04
16-102-05
16-102-06
16-102-07
16-102-08
16-102-09
16-102-10
16-102-11
16-102-12
16-102-13
16-102-14
16-102-15
16-102-16
16-102-17
16-102-18
16-102-19
16-102-20
16-102-21
16-102-22
16-102-23
16-102-24
16-102-25
16-102-26
16-102-27
16-102-28
16-102-29
16-102-30
16-102-31
16-102-32
16-102-33
16-102-34
16-102-35
16-102-36
16-102-37
16-102-38
16-102-39
16-102-40
16-102-41
16-102-42
16-102-43
16-102-44
16-102-45
16-102-46
16-102-47
16-102-48
16-102-49
16-102-50
16-102-51
16-102-52
16-102-53
16-102-54
16-102-55
16-102-56
16-102-57
16-102-58
16-102-59
16-102-60
16-102-61
16-102-62
16-102-63
16-102-64
16-102-65
16-102-66
16-102-67
16-102-68
16-102-69
16-102-70
16-102-71
16-102-72
16-102-73
16-102-74
16-102-75
16-102-76
16-102-77
16-102-78
16-102-79
16-102-80
16-102-81
16-102-82
16-102-83
16-102-84
16-102-85
16-102-86
16-102-87
16-102-88
16-102-89
16-102-90
16-102-91
16-102-92
16-102-93
16-102-94
16-102-95
16-102-96
16-102-97
16-102-98
16-102-99
16-102-100

MI-WUK VILLAGE

EXHIBIT B-2
Ordinance No. 1224

UNIT 1: 600 MAP '07'
UNIT 2: 1-60: R-1 TA (17)
A. K TA (17)



See page 10 of
the map
let's part of
this country like

SUGAR PINE SUBDIVISION UNITS 1-6
 SEC 2 & 3 T2N R16E

UNITS 1 & 2 - SEE MAP A-2
 UNITS 3, 4, 5, 6 - R-1:TX (17)

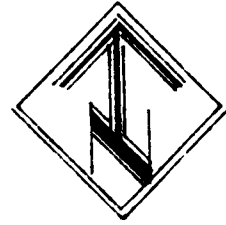
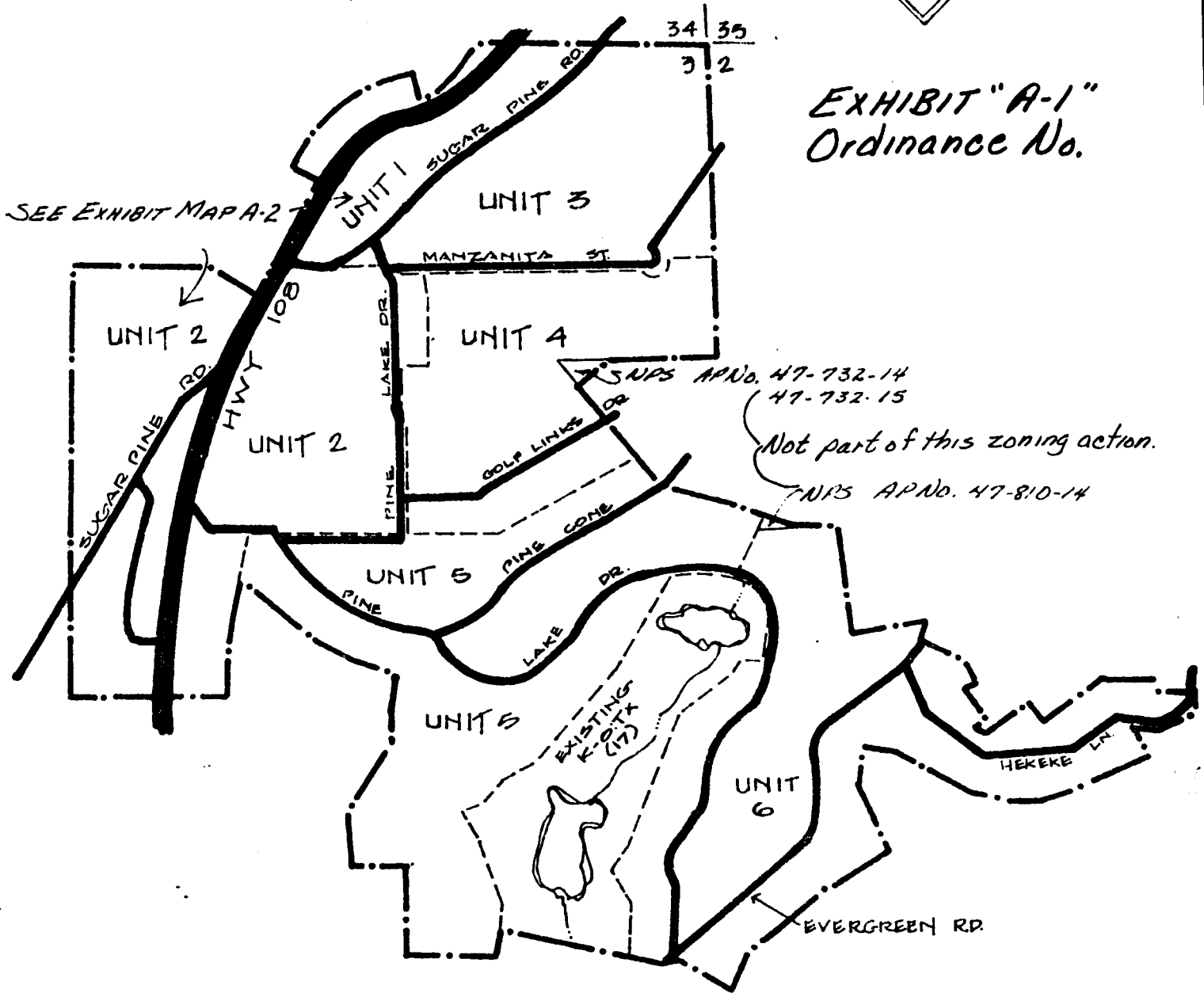


EXHIBIT "A-1"
 Ordinance No.

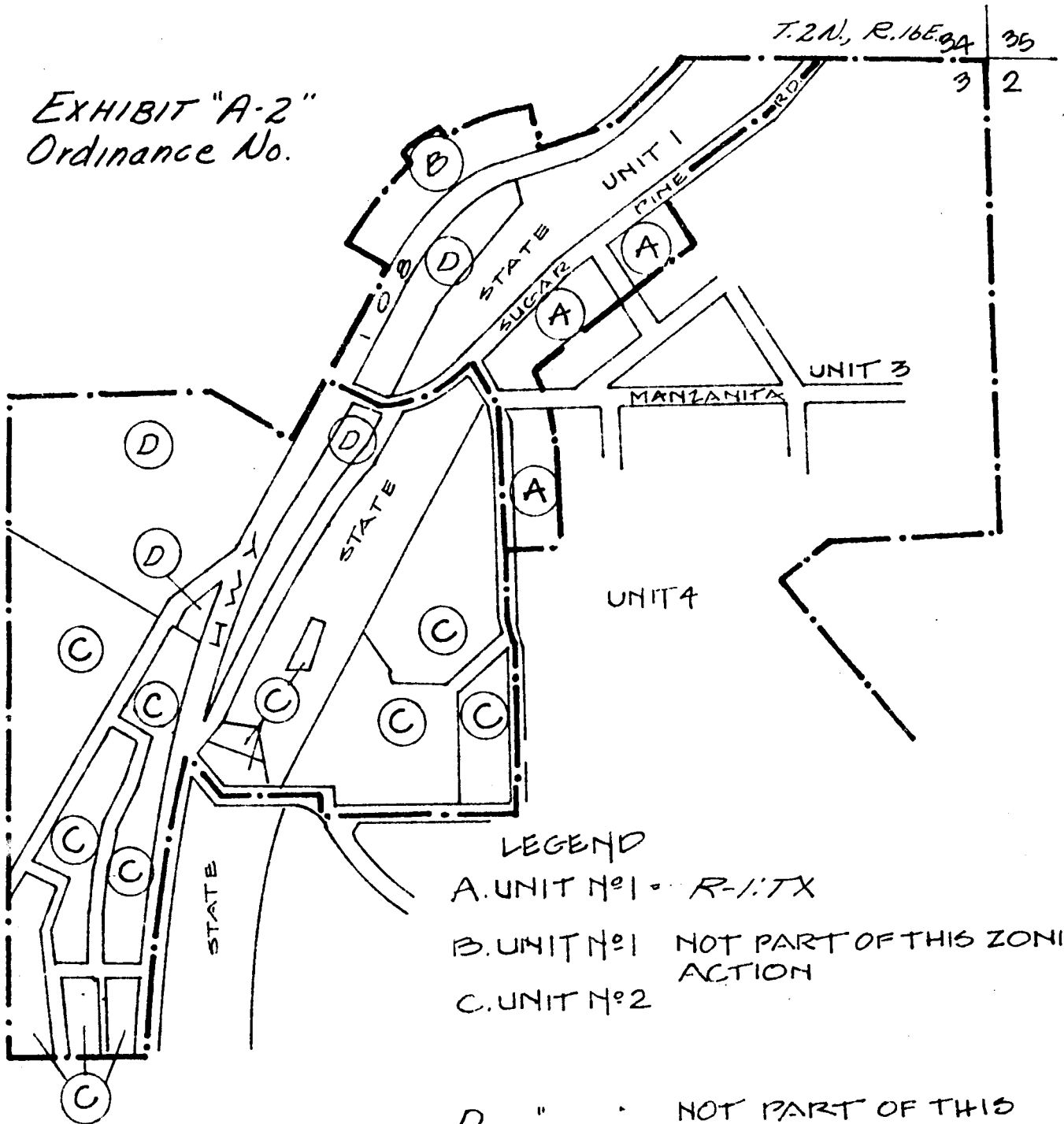


LEGEND

-  ROADS
-  UNIT BOUNDARY

SUGAR PINE SUBDIVISION 1 1/2

EXHIBIT "A-2"
Ordinance No.



LEGEND

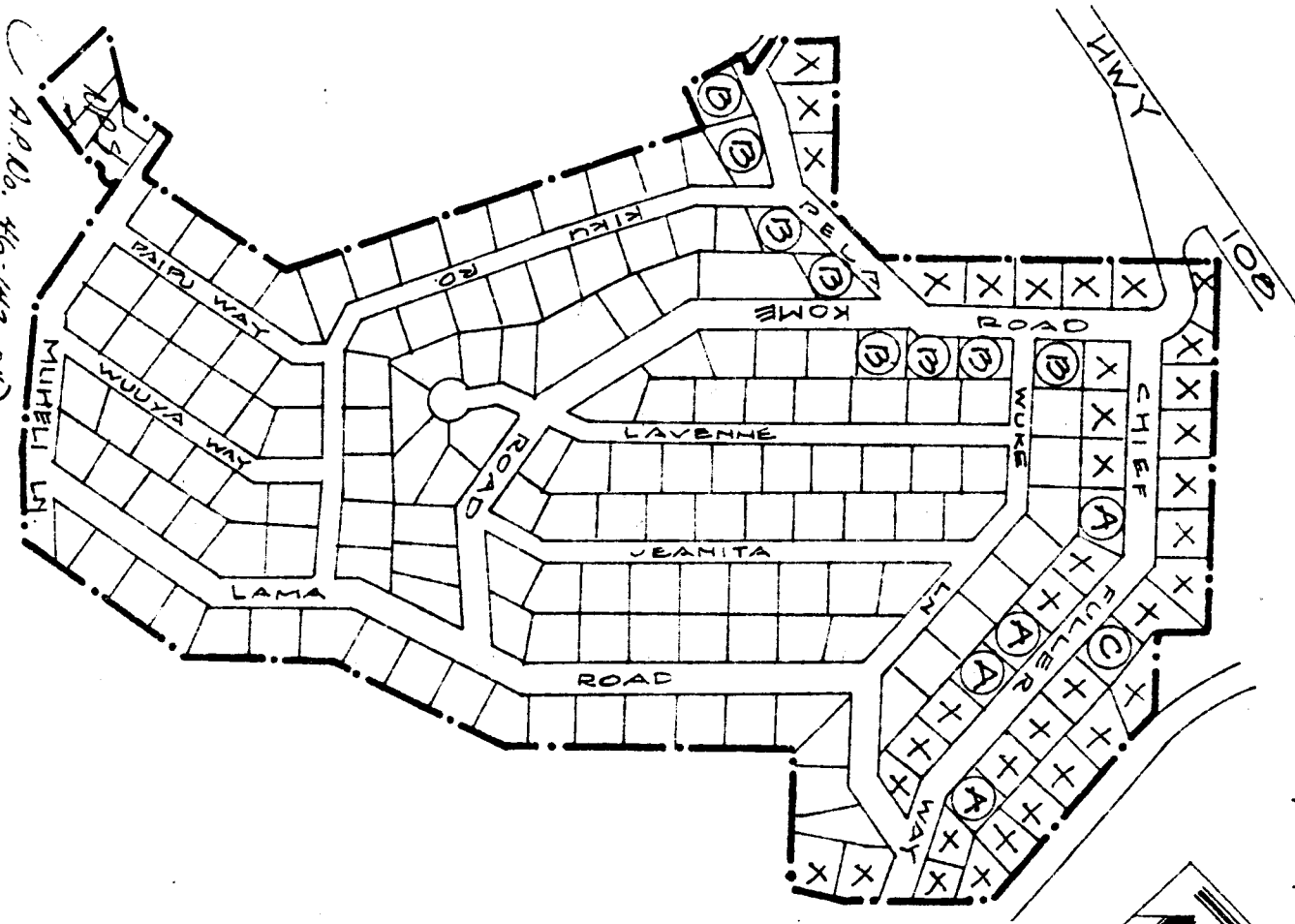
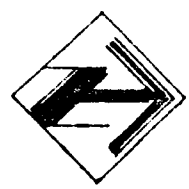
- A. UNIT N°1 - R-1:1TX
- B. UNIT N°1 NOT PART OF THIS ZONING ACTION
- C. UNIT N°2
- D. " NOT PART OF THIS ZONING ACTION

M1-WUK VILLAGE N°1
 SEC 39 TAN RIGE

EXHIBIT "B-1"
 Ordinance No.

- R-1:TX ZONING District
 EXCEPT
 A. R-3:TX (17)
 B. R-B:TX (17)
 C. R-3 (17)

X = NOT PART OF THIS ZONING ACTION

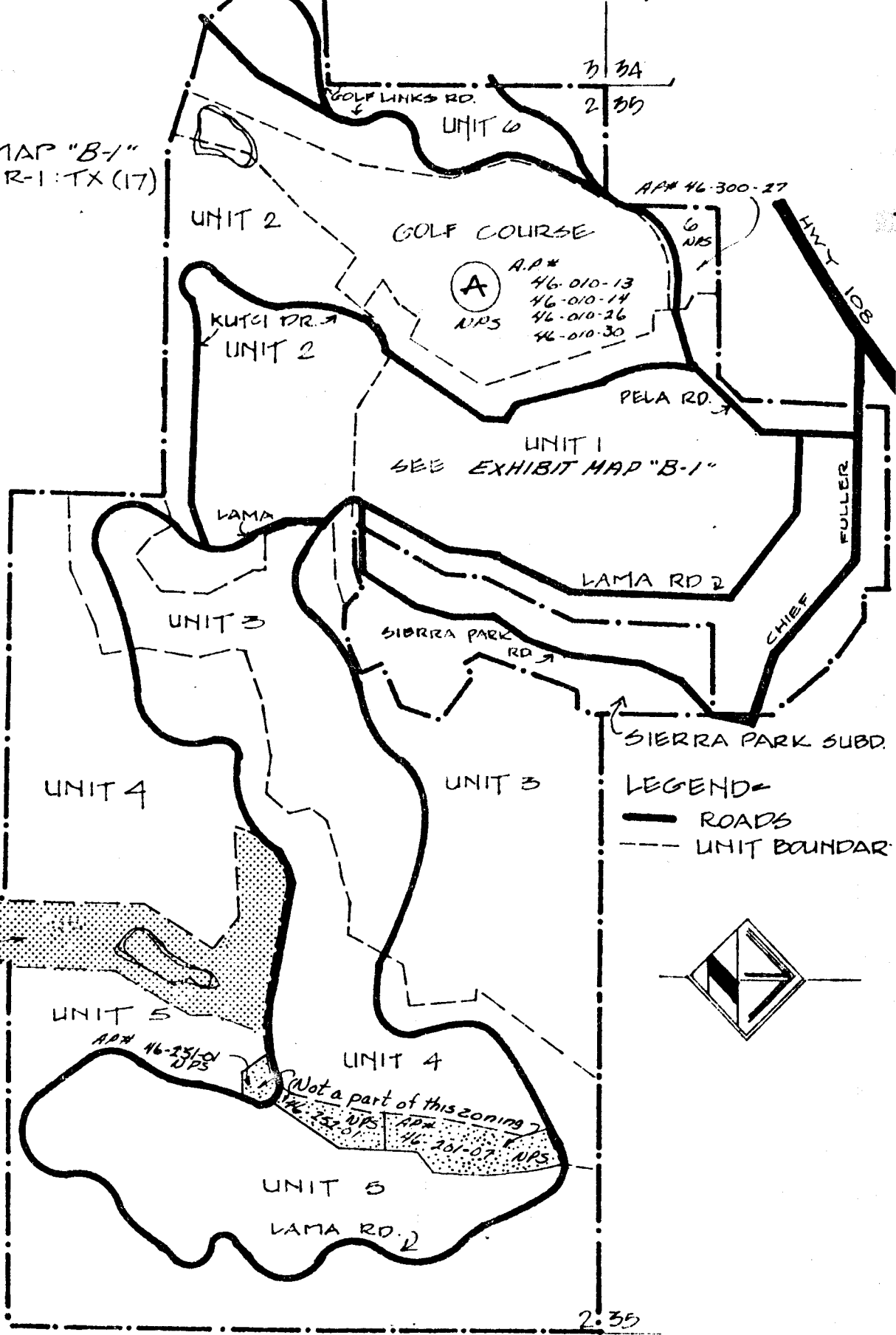


A.P.No. 46-142-04
 46-142-05
 46-142-06
 46-142-07 } NPS - Not part of this zoning action.

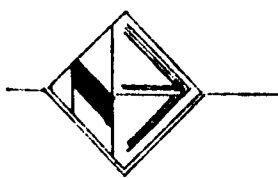
MI-WUK VILLAGE

EXHIBIT "B-2"
Ordinance No.

UNIT 1 = SEE MAP "B-1"
UNITS 2-6 - R-1:TX (17)
A. K:TX (17)



LEGEND
 ——— ROADS
 - - - UNIT BOUNDARIES



A.P.#
 46-280-02
 46-280-04
 46-280-06
 NPS
 Not a part of
 this zoning action.

Not a part of this zoning
 A.P.# 46-251-01 NPS
 A.P.# 46-201-07 NPS

2 35
 1 36