



8820

WILSHIRE BLVD

Beverly Hills

FOR LEASE
HIGH END
CREATIVE
OFFICES

LEASE DETAILS

8820

WILSHIRE BLVD

Beverly Hills

AVAILABILITIES

Suite 210 - available 4/01/25
2,400-2,950 SF

Suite 220 - available 3/01/25
4,980 SF

PARKING

2.5/1,000

\$295 - reserved

\$205 - unreserved

ASKING PRICE

\$4.95/SF MG

TERM

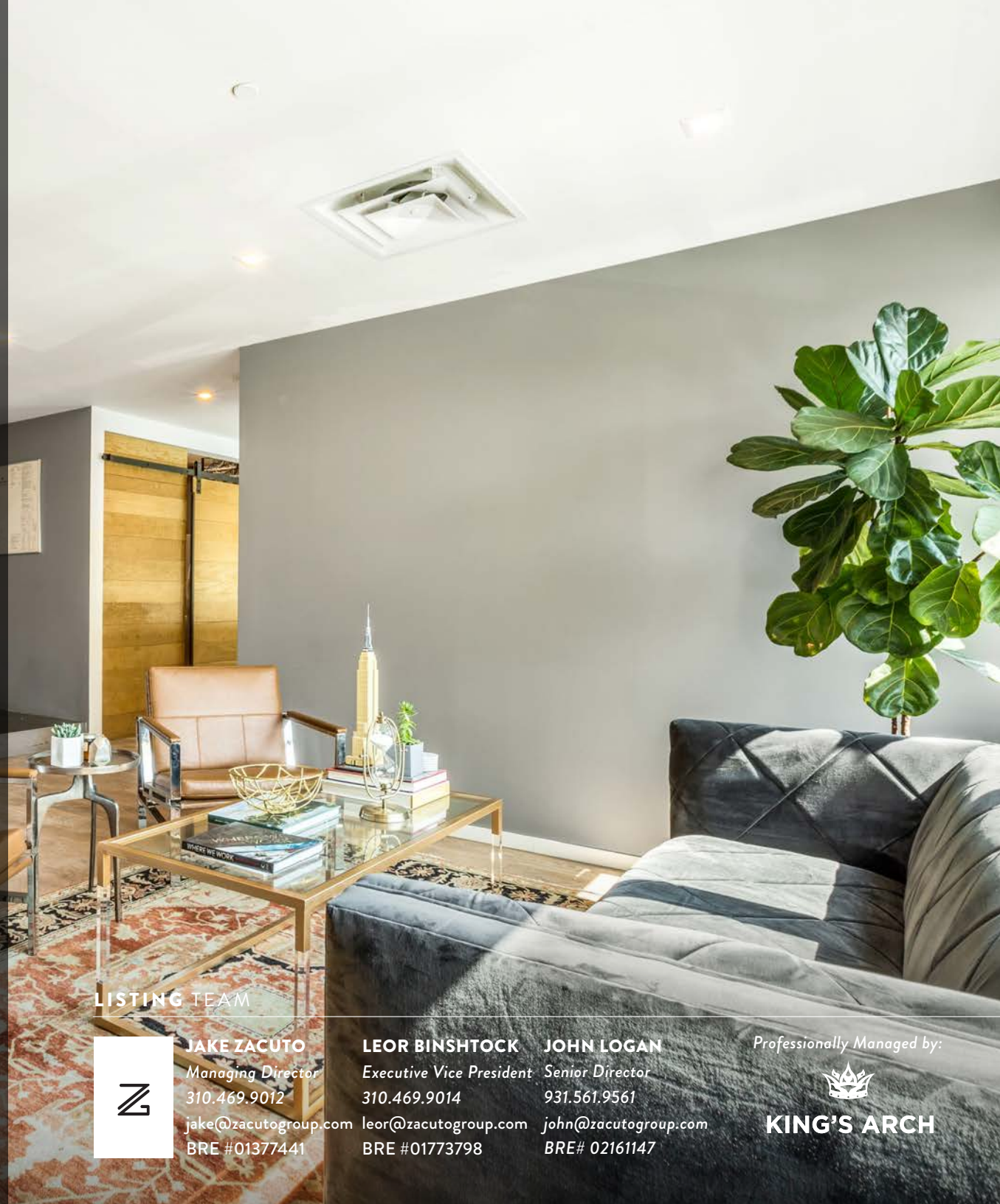
Negotiable

- Prime Beverly Hills location, walkable to many world renowned restaurants, retail and amenities

- Secure building with key fob entry and on-site manager

- Tenant Controlled HVAC, kitchenette, private restrooms, exposed high ceilings, high end finishes

- Irreplaceable location on Wilshire Blvd and Robertson Blvd



LISTING TEAM



JAKE ZACUTO
Managing Director
310.469.9012

jake@zacutogroup.com
BRE #01377441

LEOR BINSHTOCK
Executive Vice President
310.469.9014

leor@zacutogroup.com
BRE #01773798

JOHN LOGAN
Senior Director
931.561.9561

john@zacutogroup.com
BRE# 02161147

Professionally Managed by:



KING'S ARCH

LEASE



Suite 210

Details

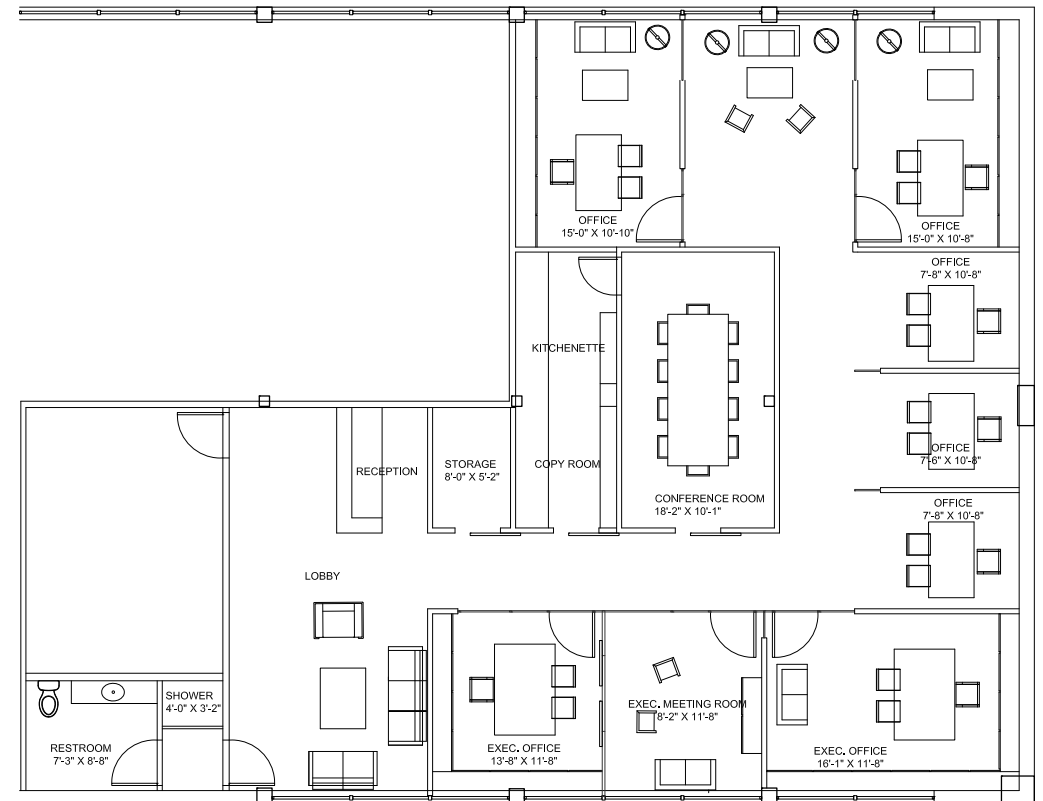
High-end finishes:

- Oak floors
- Stainless steel appliances
- Steel and glass office enclosures
- Operable windows

Layout features:

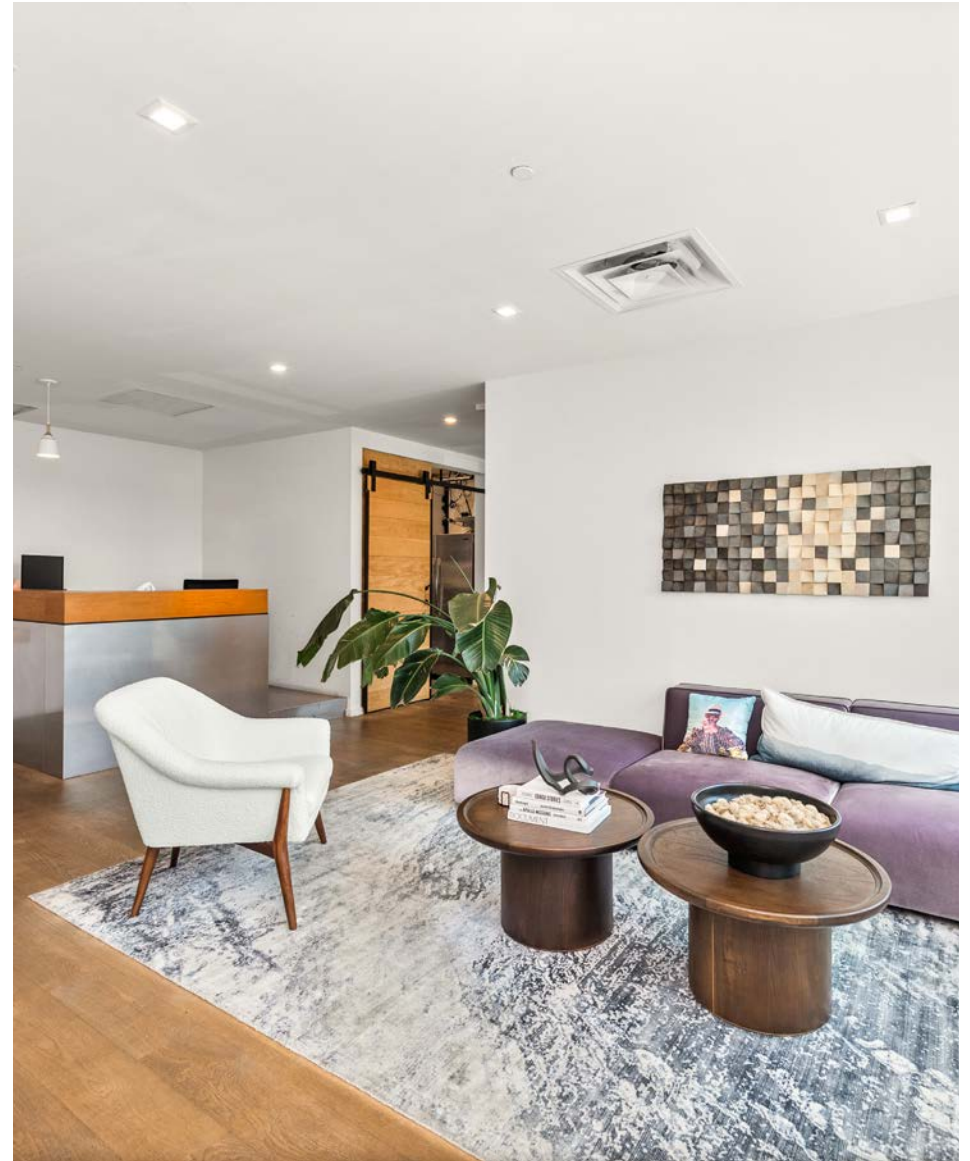
- In-suite private restroom
- 8 private offices
- Large conference room
- Kitchenette

Suite 210 Floor plan



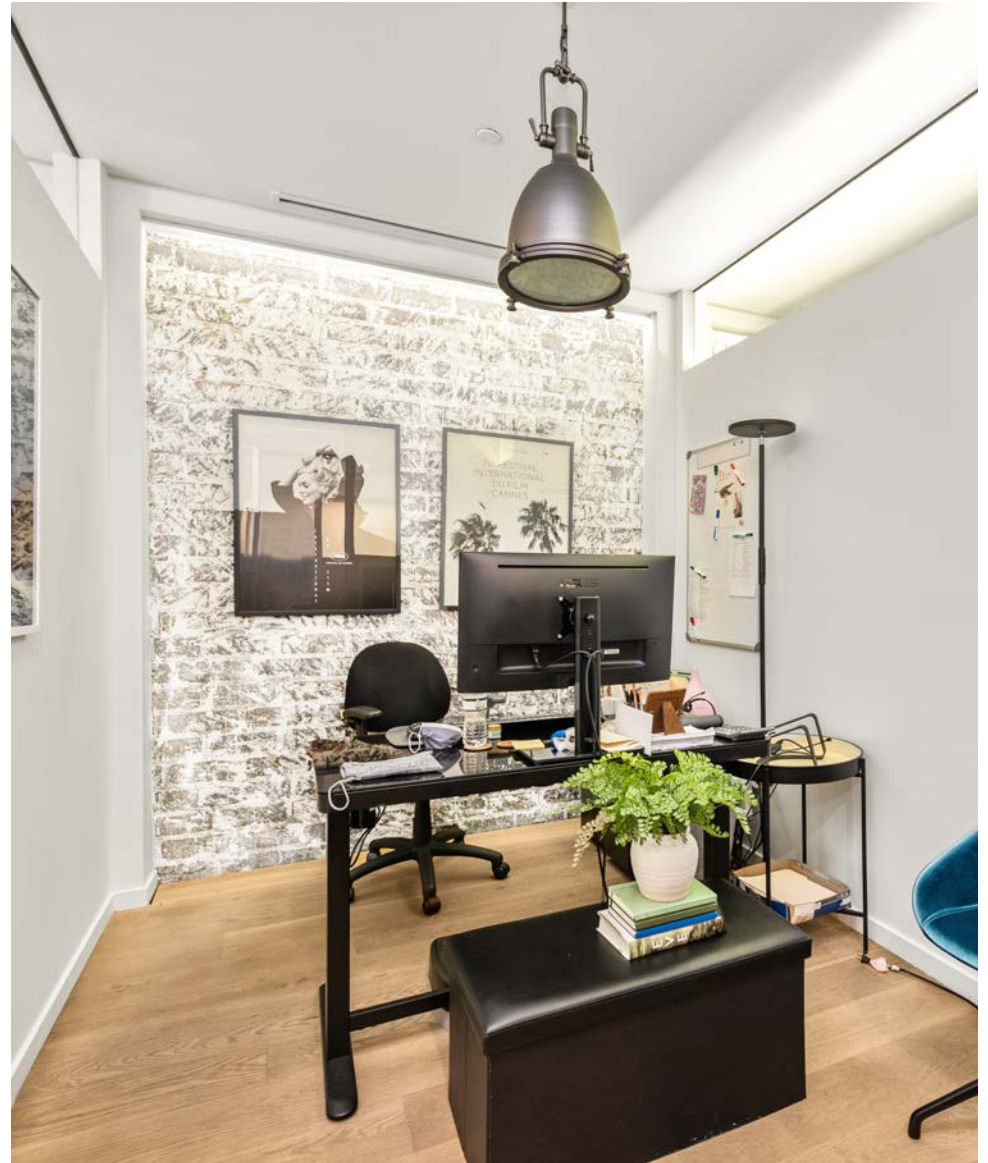
LEASE
Suite 210

8820 WILSHIRE BLVD, BEVERLY HILLS, CA 90211



LEASE
Suite 210

8820 WILSHIRE BLVD, BEVERLY HILLS, CA 90211



LEASE

Suite 220

Details

High-end finishes:

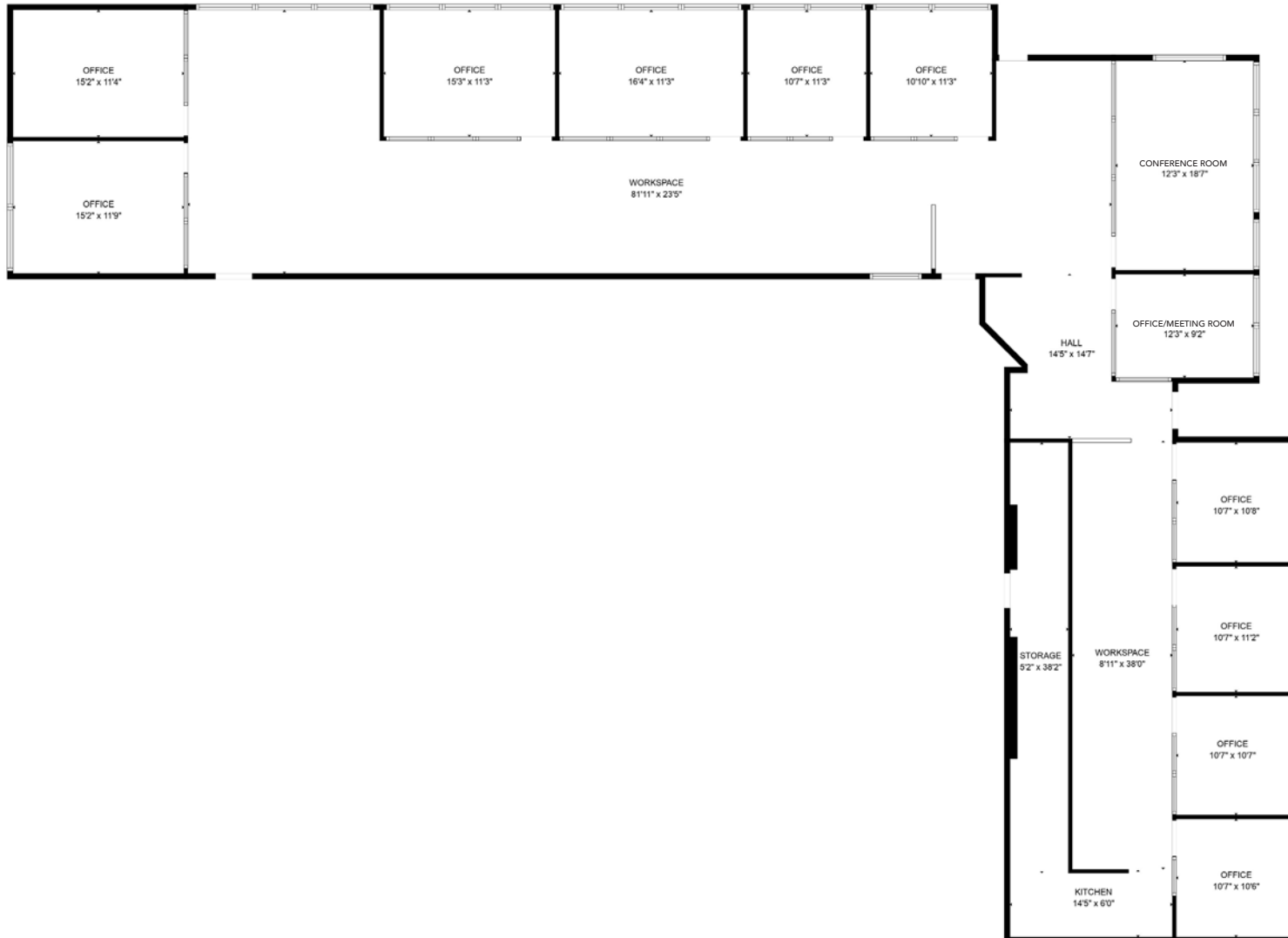
- Stainless steel appliances
- Steel and glass office enclosures
- Operable windows

Layout features:

- Private restroom
- Reception area
- 11 private offices
- Large open work space
- Large conference room
- Kitchenette

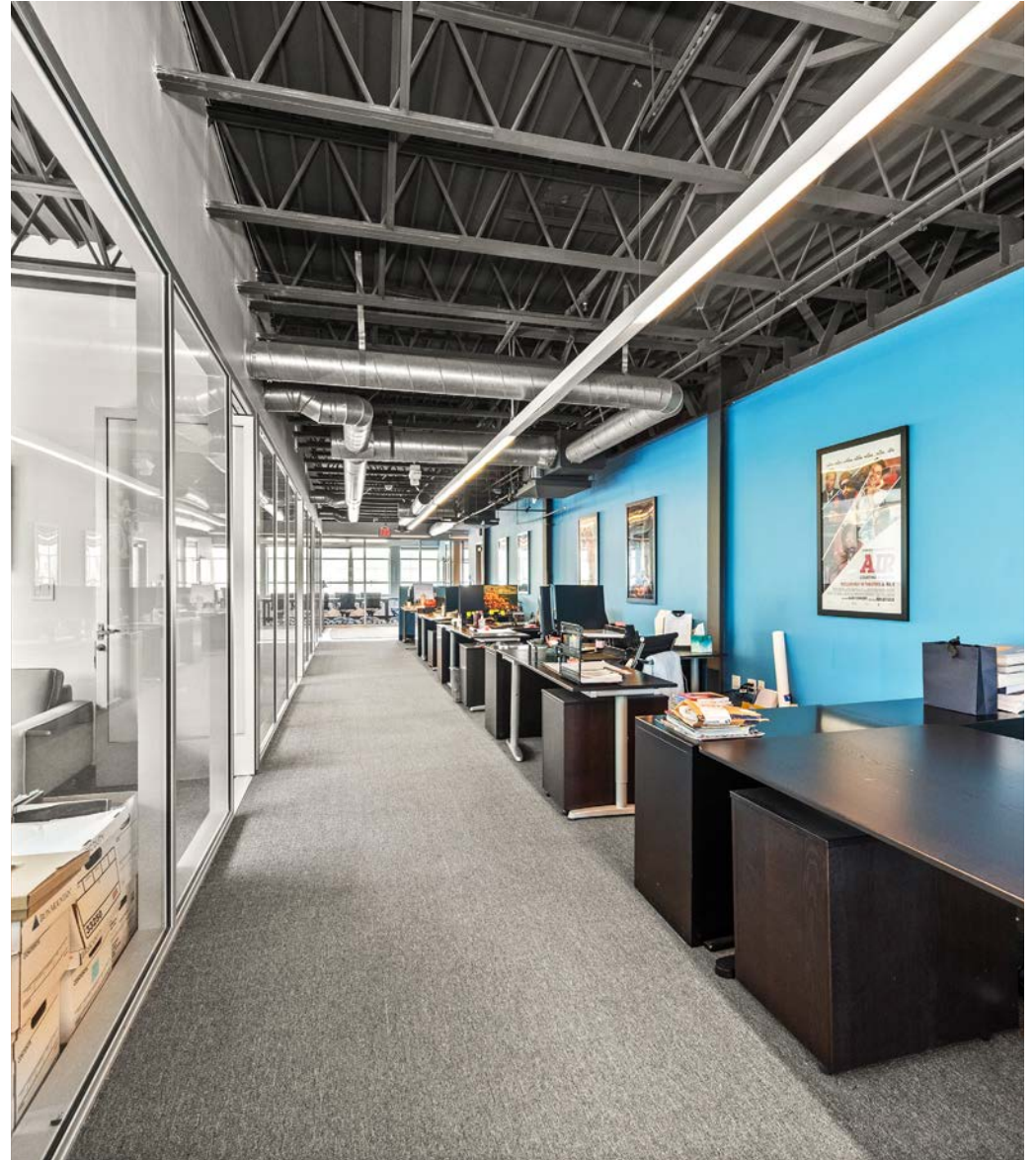
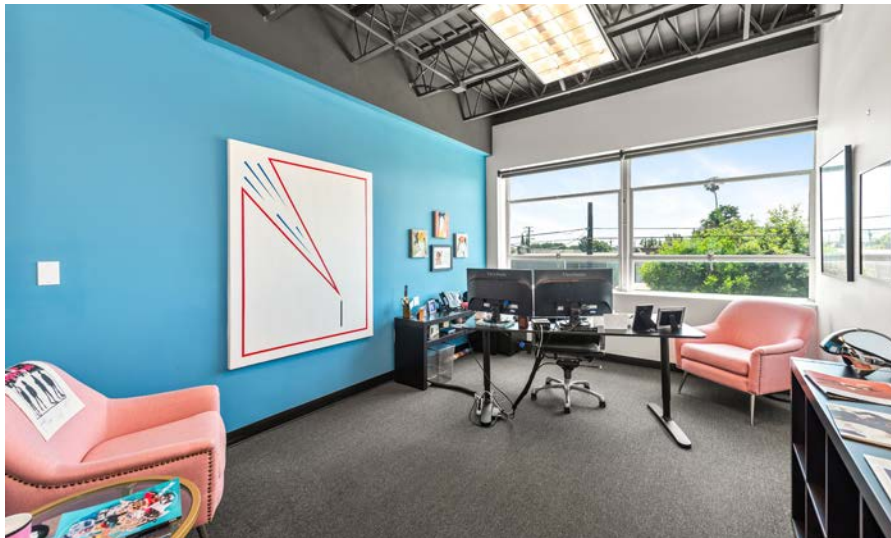


Suite
220
Floor plan



LEASE
Suite 220

8820 WILSHIRE BLVD, BEVERLY HILLS, CA 90211





<EXIT



Prime Beverly Hills Location

PRIME CORNER OF
WILSHIRE + ROBERTSON

INCREDIBLY HIGH TRAFFIC

75K+
Cars/day

ICONIC WALKABILITY

93
Walkscore

NEAR SOME THE BEST
OF BEVERLY HILLS

SUMMER
FISH & RICE

 **goop**
KITCHEN


LA GONDOLA
BEVERLY HILLS
EST. 1987


FOUR SEASONS
HOTELS AND RESORTS

YASU
BEVERLY HILLS

The Ivy
RESTAURANTS


a.o.c.

il Pastaio
Ristorante - Bar


SLS HOTEL
OF BEVERLY HILLS

EST. 1915
NEW YORK CITY
DANTE
Beverly Hills


KAZAN
BEVERLY HILLS


SUGARFISH
BY SUSHI HOZAWA

matú


SUR LE VERT
WINE BAR

MAMÁ X DIOS
MODERN MEXICAN CUISINE

AVRA
BEVERLY HILLS
estiatorio



8820
WILSHIRE BLVD
Beverly Hills

goop
KITCHEN

FOUR SEASONS
HOTELS AND RESORTS

MAMÁ X DIOS
MEXICAN MEXICAN CUISINE

a.o.c.

il Pastaio
Ristorante • Bar

DANTE
EST. 1915
NEW YORK CITY
Beverly Hills

AVRA
BEVERLY HILLS
estiatorio

LA GONDOLA
RESTAURANT & BAR

PROSPECT GOURMAND

KAZAN
BEVERLY HILLS

SUMMER
FISH & RICE

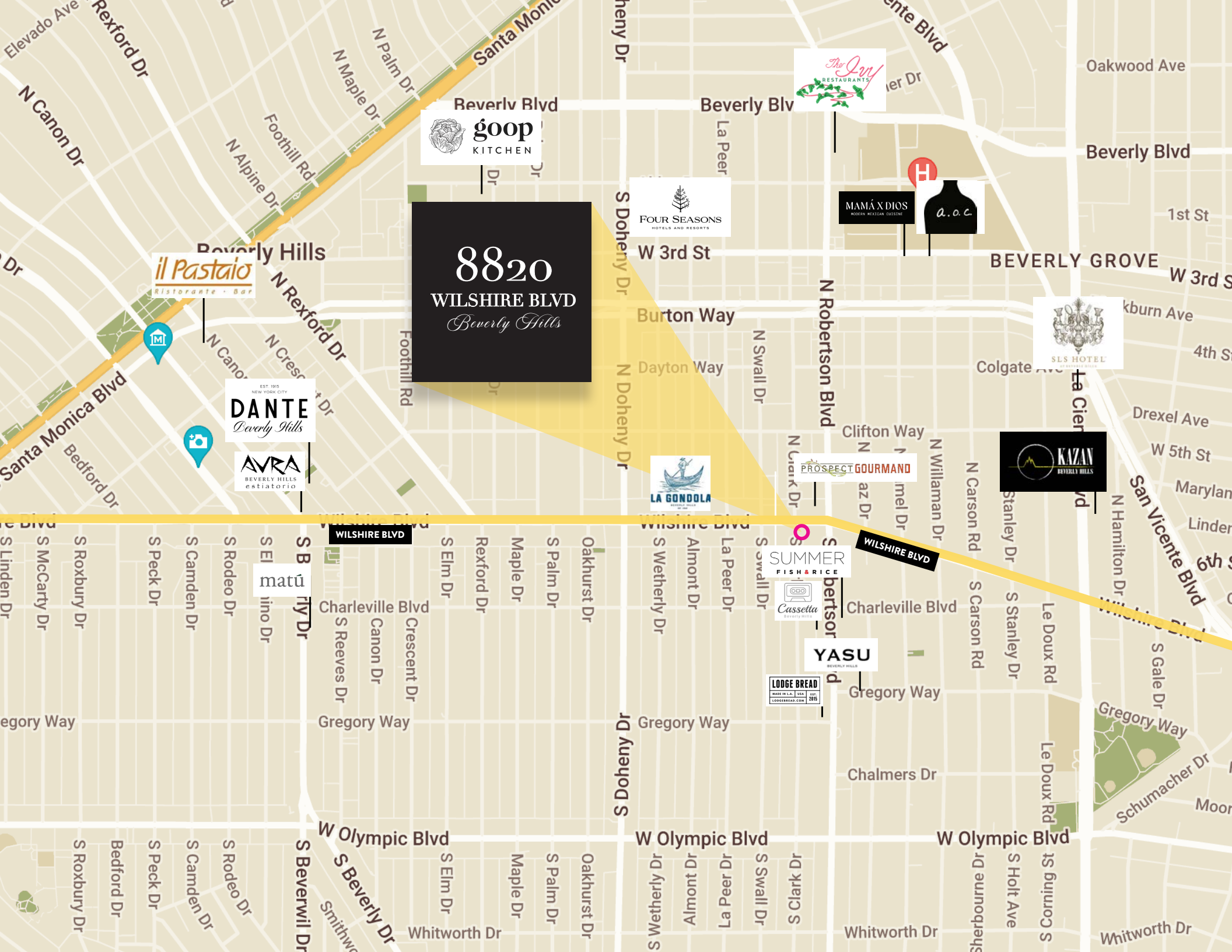
Cassetta
BEVERLY HILLS

YASU
BEVERLY HILLS

LODGE BREAD
MADE IN L.A. USA 2017
LODGEBREAD.COM 2017

SLS HOTEL
BEVERLY HILLS

matú



8820
WILSHIRE BLVD
Beverly Hills



JAKE ZACUTO

Managing Director
310 469 9012

jake@zacutogroup.com
BRE #01377441

LEOR BINSHTOCK

Executive Vice President
310.469.9014

leor@zacutogroup.com
BRE #01773798

JOHN LOGAN

Senior Director
310.469.9024

john@zacutogroup.com
BRE #02161147

Professionally Managed by:



KING'S ARCH

No warranty, express or implied, is made as to the accuracy of the information contained herein. This information is submitted subject to errors, omissions, change of price, rental or other conditions, withdrawal without notice. All parties who receive this material should not rely on it, but should use it as a starting point of analysis, and should independently confirm the accuracy of the information contained herein through a due diligence review of the books, records, files and documents that constitute reliable sources of the information described herein. Logos and images are for identification purposes only and may be trademarks of their respective companies. All terms provided are approximate. Lessee to verify. 08/2024

ZACUTOGROUP.COM | 310.469.9300

