

# FAIRFAX + MELROSE

700 N FAIRFAX AVENUE  
LOS ANGELES, CA 90046



**JAY LUCHS**  
**CARLY GELLER**

Vice Chairman  
Director - Jay Luchs Group

310-407-6585  
310-593-0760

[jay.luchs@nrmk.com](mailto:jay.luchs@nrmk.com)  
[carly.geller@nrmk.com](mailto:carly.geller@nrmk.com)

CA RE Lic. #01260345  
CA RE Lic. #02153582

**JAYLUCHS.COM**  
**NEWMARK**



**ADDRESS**

700 N Fairfax Avenue  
Los Angeles, CA 90046

**USE**

Retail

**SIZE**

±3,000 SF

**RENT**

\$40,000 per month NNN

**JAY LUCHS**  
**CARLY GELLER**

Vice Chairman  
Director - Jay Luchs Group

310-407-6585  
310-593-0760

[jay.luchs@nrmk.com](mailto:jay.luchs@nrmk.com)  
[carly.geller@nrmk.com](mailto:carly.geller@nrmk.com)

CA RE Lic. #01260345  
CA RE Lic. #02153582

**JAYLUCHS.COM**  
**NEWMARK**

**HIGHLIGHTS**

- On the busy corner of Fairfax Avenue and Melrose Avenue with a traffic count of approximately 31,377 cars per day
- Gated parking area can fit up to 20 stacked cars
- Large display windows and skylights
- High ceilings
- Cement floors
- Mezzanine area

Traffic Count: TrafficMetrix, Costar 2022



**JAY LUCHS**  
**CARLY GELLER**

Vice Chairman  
Director - Jay Luchs Group

310-407-6585  
310-593-0760

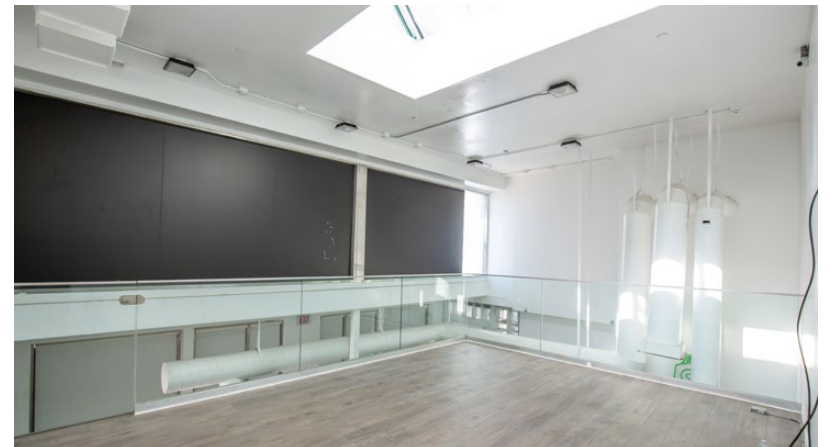
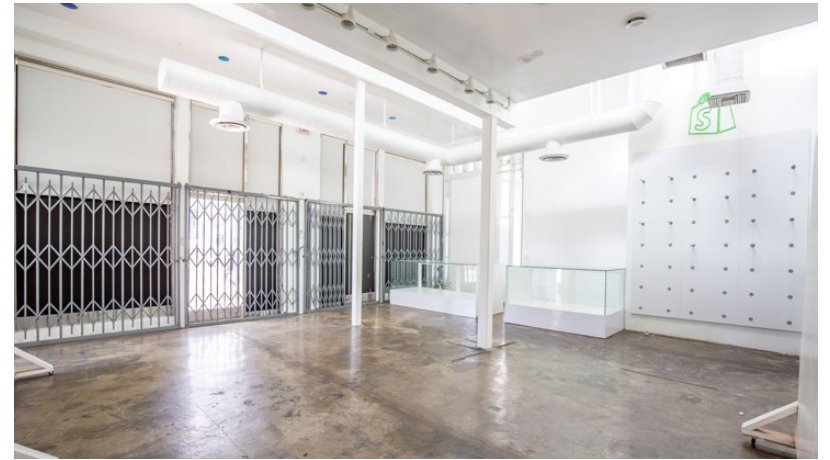
[jay.luchs@nrmk.com](mailto:jay.luchs@nrmk.com)  
[carly.geller@nrmk.com](mailto:carly.geller@nrmk.com)

CA RE Lic. #01260345  
CA RE Lic. #02153582

**JAYLUCHS.COM**  
**NEWMARK**

# INTERIOR PHOTOS

FAIRFAX +  
MELROSE



**JAY LUCHS**  
**CARLY GELLER**

Vice Chairman  
Director - Jay Luchs Group

310-407-6585  
310-593-0760

[jay.luchs@nrmk.com](mailto:jay.luchs@nrmk.com)  
[carly.geller@nrmk.com](mailto:carly.geller@nrmk.com)

CA RE Lic. #01260345  
CA RE Lic. #02153582

**JAYLUCHS.COM**  
**NEWMARK**

PREVIOUS EVENT USES



Space Jam Pop-up



Netflix Pop-up



Postaboys X Dipset Pop-Up



Nike Pop-Up

JAY LUCHS  
CARLY GELLER

Vice Chairman  
Director - Jay Luchs Group

310-407-6585  
310-593-0760

jay.luchs@nrmk.com  
carly.geller@nrmk.com

CA RE Lic. #01260345  
CA RE Lic. #02153582

JAYLUCHS.COM  
NEWMARK

Genghis Cohen

FAIRFAX + MELROSE

SORELLA

SHOE PALACE

Melrose Burgers 'N Fries  
Ubatuba Acai

PROSTATE & PA

Spokes N' Stuff

GHOSH

The Record Collector

URBAN OUTFITTERS

Headline Records

BAIT

The Cool by CoolKicks

Foot Locker

Fairfax High School

±31,377  
CARS PER DAY

Traffic Count: TrafficMetrix, Costar 2022

JAY LUCHS  
CARLY GELLER

Vice Chairman  
Director - Jay Luchs Group

310-407-6585  
310-593-0760

jay.luchs@nrmk.com  
carly.geller@nrmk.com

CA RE Lic. #01260345  
CA RE Lic. #02153582

JAYLUCHS.COM  
NEWMARK



±31,377  
CARS PER DAY

±33,203  
CARS PER DAY

FAIRFAX + MELROSE

Traffic Count: TrafficMetrix, Costar 2022

**JAY LUCHS**  
**CARLY GELLER**

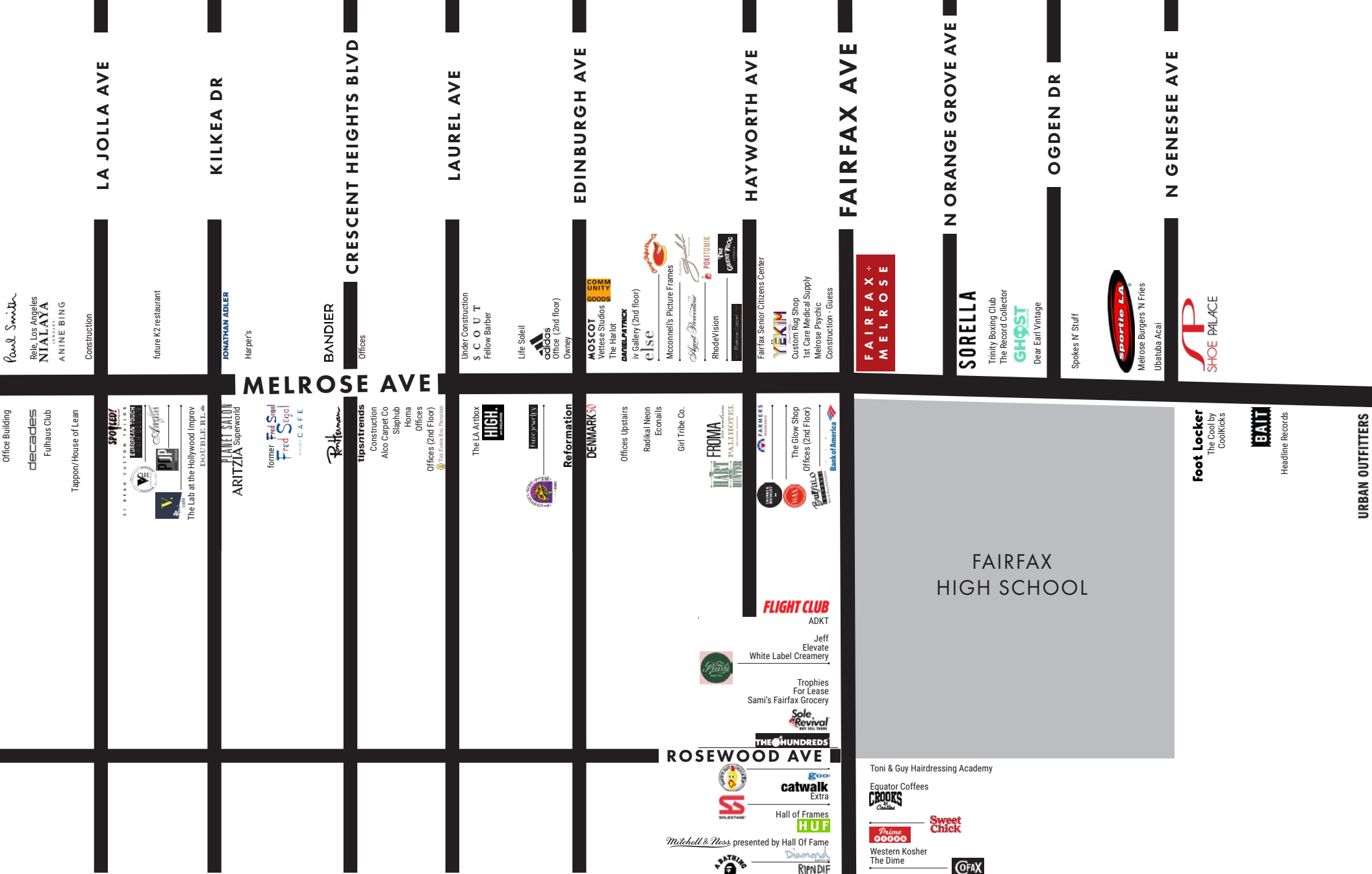
Vice Chairman  
Director - Jay Luchs Group

310-407-6585  
310-593-0760

[jay.luchs@nrmk.com](mailto:jay.luchs@nrmk.com)  
[carly.geller@nrmk.com](mailto:carly.geller@nrmk.com)

CA RE Lic. #01260345  
CA RE Lic. #02153582

**JAYLUCHS.COM**  
**NEWMARK**



FAIRFAX  
HIGH SCHOOL

The information contained herein has been obtained from sources deemed reliable but has not been verified and no guarantee, warranty or representation, either express or implied, is made with respect to such information. Terms of sale or lease and availability are subject to change or withdrawal without notice.

**JAY LUCHS**  
**CARLY GELLER**

Vice Chairman  
Director - Jay Luchs Group

310-407-6585  
310-593-0760

jay.luchs@nrmk.com  
carly.geller@nrmk.com

CA RE Lic. #01260345  
CA RE Lic. #02153582

Corporate RE Lic. #01355491

**JAYLUCHS.COM**  
**NEWMARK**

\*Not to scale